

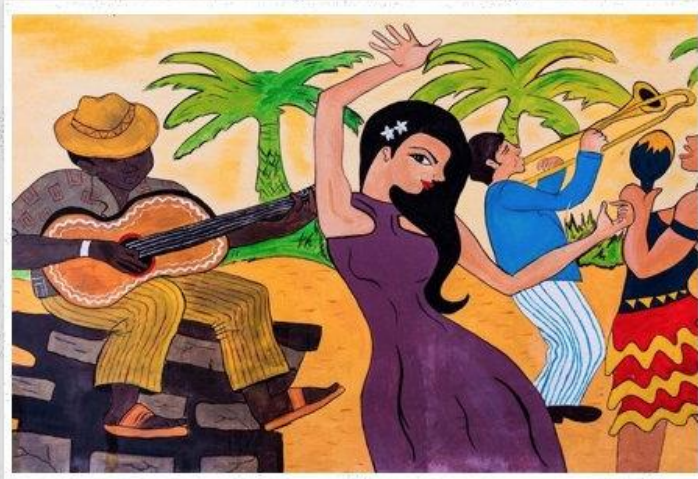
Is this email not displaying correctly? [View it in your browser](#)

AN EVENT YOU DON'T WANT TO MISS!

PEACE RIVER BOTANICAL & SCULPTURE GARDENS



**THIS SIGNATURE EVENT AND VIBRANT
EXPERIENCE BENEFITTING PEACE RIVER
BOTANICAL & SCULPTURE GARDENS IS A
PARTY THAT WILL BE TALKED ABOUT
LONG AFTER IT IS OVER!**



**FEATURED ARTIST LEOMA LOVEGROVE
WILL PUT ON A SHOW AND MASTER OF
CEREMONIES AND NBC NEWS ANCHOR,
STACEY DEFFENBAUGH, WILL DELIGHT
THE CROWD.**



Located in the heart of Matlacha Island was one of the most colorful landmarks along the Gulf Coast, Lovegrove Gallery & Gardens. It served as the international headquarters of Leoma Lovegrove until it was destroyed by Hurricane Ian. Leoma's art is instantly recognizable with her energized brush strokes, paint splatters, and vibrant colors. Her impressionist/ expressionist painting style is a must see and her performance will wow you!

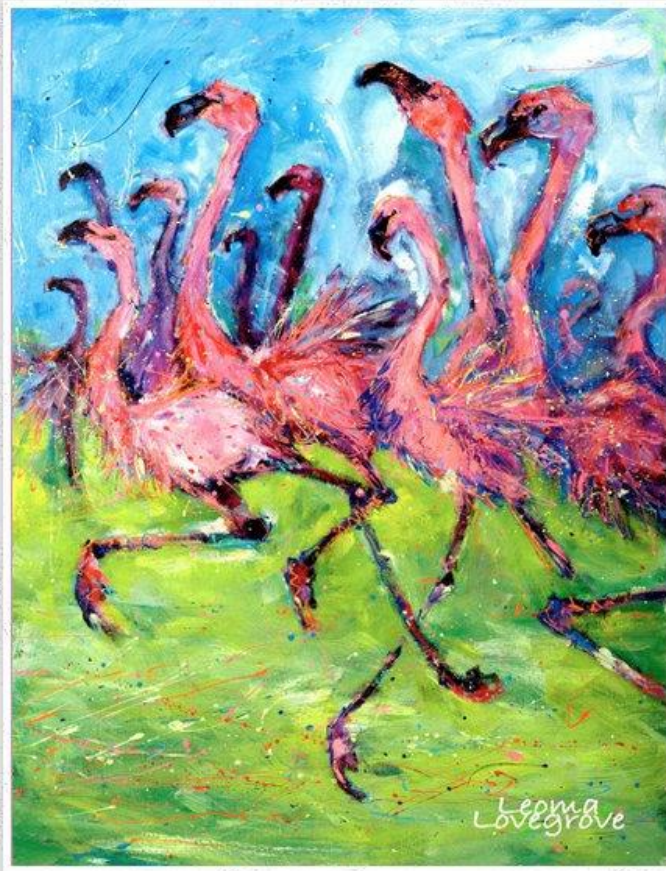


Thanks to generous giver, Alan Schulman, a bounty of pink will surround our tropical oasis. The delicious food, colorful photo-ops, and Caribbean entertainment will give you the feeling that you're on *Island Time*! Perhaps you could even win a trip to the crystal clear waters of the Caribbean in one of our auction offerings! This is a cocktail/semi-formal event on the Great Lawn so bring your most vibrant attire and grass-worthy shoes. This is a great event for your valentine or a night out for your group of friends - and the proceeds you would likely be spending anyway will benefit our sanctuary of art and nature!



Beloved NBC2 News anchor and local celebrity, Stacey was named a Southwest Florida Leading Lady, Power Woman, and Women of Initiative for her charitable contributions to our community. Stacey spends numerous hours helping non-profits in Southwest Florida raise money. She and her husband, Keith, own F.M. Don's, an award-winning restaurant in Punta Gorda. Stacey will enchant the crowd as our Emcee of ceremonies.

KICKING OFF OUR CARIBBEAN COLORS EXHIBIT, YOU'LL BE THE FIRST TO GLIMPSE WHAT WE HAVE IN STORE FOR VISITORS THIS SPRING!



PURCHASE YOUR TICKETS HERE

Members \$130, Non-members \$150

Sponsorships and Corporate Tables still available. Please reach out to [Kelly Brigham-Steiner](#) for more details.