

Eagle Hill Substation Design Focus Group

Meeting 3

Monday, December 13, 2021

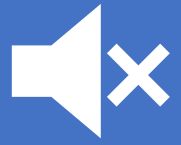
6:00 p.m. to 7:00 p.m.

Virtually via Zoom.com

Tonight's Agenda

Time	Item	Est. Duration
6:05	Zoom Housekeeping & Welcome	5 mins.
6:10	Goals	5 mins.
6:15	Presentation: Updated Renderings	15 mins.
6:30	Discussion and Q & A	20 mins.
6:50	Wrap Up & Next Steps	5 mins.

Zoom Housekeeping



Please remain muted to eliminate background noise

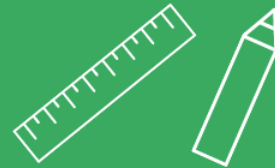


Please wait until Q&A to use the chat feature

Our Design Process

Focus Group

STEP
1



STEP
2

Revised
Renderings

Focus Group

STEP
3



STEP
4

Community
Open House

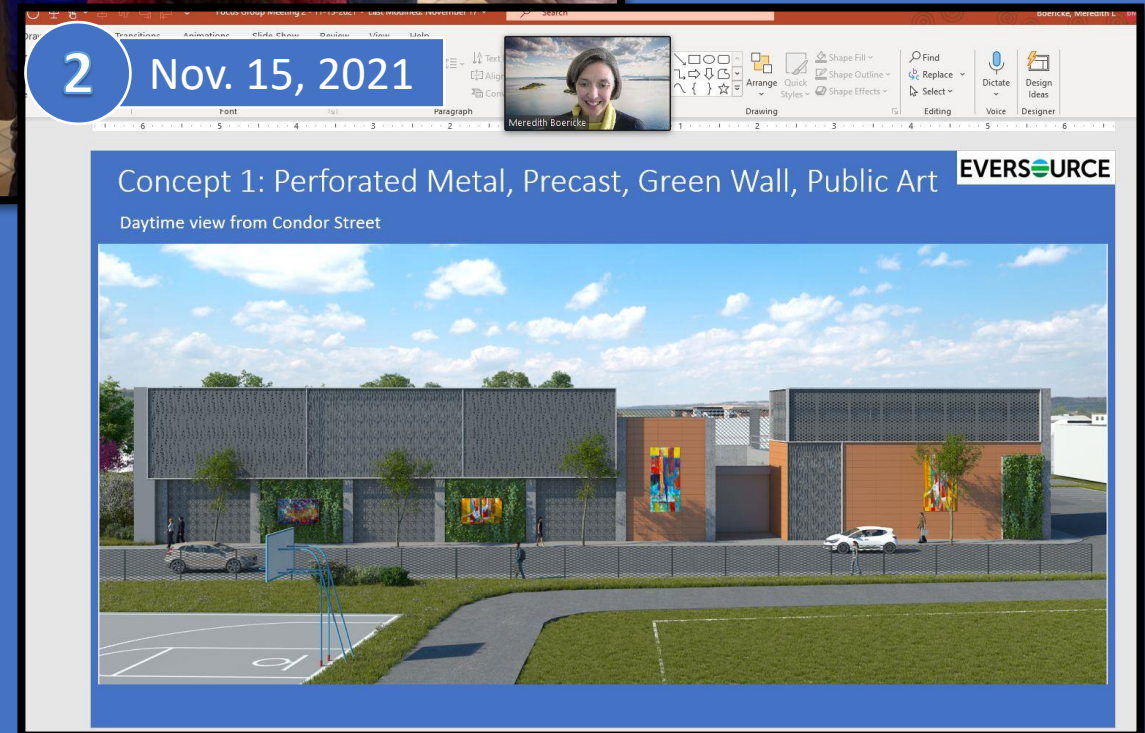
BPDA
Approval

STEP
5



Goals

- ✓ Review
- ✓ Engage
- ✓ Collaborate
- ✓ Advance



Feedback

Consider using less Green Wall because if it's not properly maintained it will not look good.



Consider extending the preferred design elements around the entire perimeter.

Concept 1: Perforated Metal, Precast, Public Art

Green wall removed

Perforated metal and terracotta paneling wrap the station



Bird's eye view with East Boston Police Station

The depictions shown are artistic renderings and the final built structure may vary based on in-field conditions

Concept 1: Perforated Metal, Precast, Green Wall, Public Art

Bird's eye view with East Boston Police Station



11/15/2021

- Green walls adorn facade
- Concrete and fiberglass wrap enclosure



12/13/2021

- Terracotta paneling replaces green walls
- Perforated metal and terracotta paneling wrap enclosure

Concept 1: Perforated Metal, Precast, Public Art

Perforated metal panels are customizable



Concept 1: Perforated Metal, Precast, Public Art

Spotlights on public art, backlighting on panels
Perforated metal panels are customizable



Concept 1: Perforated Metal, Precast, Public Art

Spotlights only on public art

Perforated metal panels are customizable



Concept 1: Perforated Metal, Precast, Public Art

View from the Urban Wild in early spring/late fall

Perforated metal panels are customizable



Concept 1: Perforated Metal, Precast, Green Wall, Public Art

View from the Urban Wild



11/15/2021

- Green wall below perforated metal
- Concrete and fiberglass wrap enclosure



12/13/2021

- Terracotta paneling replaces green wall
- Perforated metal and terracotta paneling wrap enclosure

Perforated Metal

Real life examples in
day and night



Concept 2: Translucent, Green Wall, Precast, Public Art

Green wall reduced

Terracotta paneling and small gauge fiberglass wrap the station



Bird's eye view with East Boston Police Station

Concept 2: Translucent, Green Wall, Precast, Public Art

Bird's eye view with East Boston Police Station



11/15/2021

- Green walls adorn façade near Urban Wild
- Concrete and fiberglass wrap enclosure



12/13/2021

- Green walls reduced
- Terracotta paneling and small gauge fiberglass wrap enclosure

Concept 2: Translucent, Green Wall, Precast, Public Art



Concept 2: Translucent, Green Wall, Precast, Public Art



Concept 2: Translucent, Green Wall, Precast, Public Art

View from the Urban Wild in early spring/late fall



Concept 2: Translucent, Green Wall, Precast, Public Art

View from the Urban Wild



11/15/2021

Concrete and fiberglass wrap enclosure



12/13/2021

Terracotta paneling and small gauge fiberglass wrap enclosure

Translucent Wall

Real life examples in
day and night



Green Wall

Real life examples in
summer and winter



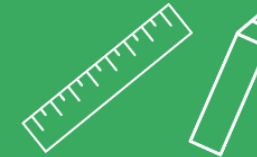
Next Steps

- ✓ Schedule virtual and in-person open houses*
- ✓ Present the preferred design options to the broader community
- ✓ Gather additional feedback on the designs
- ✓ Review community feedback with Focus Group members

Our Design Process

Focus Group

STEP
1



STEP
2

Revised
Renderings

Focus Group

STEP
3



STEP
4

Community
Open House

BPDA
Approval

STEP
5

