

COGNEX

CHICAGO ELECTRIC

Vision Solutions

Integrated Machine Vision Systems



Technology to Improve Productivity

Better... Faster... Smarter !

Vision Solutions

Integrated Machine Vision Systems

Chicago Electric provides fully integrated, turnkey machine vision solutions to many industries. As a Partner System Integrator for Cognex, we are qualified to offer the complete range of vision technology including area scan, linescan, 3-D and barcode. Chicago Electric has the technology to meet your application needs.



Products



In-Sight

- Controller based, self contained vision system
- Multiple speed & resolution options
- Extensive tool sets for large range of applications



VisionPro

- PC-based vision software suite
- Flexible high end vision software package



DataMan

- Cognex ID readers
- Handheld & fixed mount
- 1-D and 2-D readers



DS1000

- 3-D vision inspection system
- VisionPro tool package

Applications



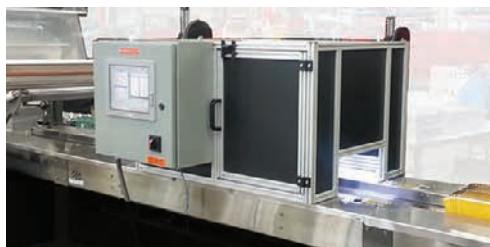
360 Degree Inspection of Cylindrical Packaging

- Cognex In-Sight 5604 Linescan camera interfaced to Allen-Bradley CompactLogix PLC and Emerson servo drive
- All components controlled by an InduSoft custom user interface with Auto-Teach functionality



ProVision Corrugated Print Inspection System

- Basler PC-based Dual 8K Linescan cameras
- VisionPro Software with custom Visual Basic interface



Vision Sorting System

- Detects color and pattern variations to divert product to correct location
- Cognex In-Sight 7402 color camera interfaced to Allen-Bradley CompactLogix PLC
- All components controlled by an InduSoft custom user interface with Auto-Teach functionality



Barcode and Optical Character Recognition

- Sorts medical products in large distribution facility
- Cognex In-Sight 7200 and DataMan 302 cameras
- Cameras interface with Mettler-Toledo Scale Conveyor and Allen-Bradley ControlLogix PLC to inspect and sort packages



Chicago Electric has capabilities in a broad range of automation technologies that when combined with Cognex products create exceptional integrated solutions.

Product partners

With an emphasis on Drives, PLCs, HMI, SCADA, Motion Control, Robotics and Vision, Chicago Electric is aligned with these global manufacturers of automation products.

COGNEX

Rockwell Automation | **AB**

CONTROL TECHNIQUES

red lion

YASKAWA

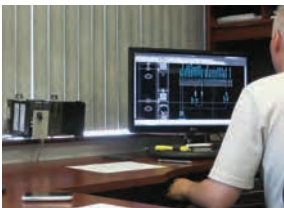
MOTOMAN ROBOTS

EMERSON
Industrial Automation

Web-Ready
InduSoft
Tools for Automation

Comprehensive capability

Chicago Electric offers products, systems and complete machine solutions for automation. Our scope of services includes: design, engineering, panel assembly, programming, testing, mechanical fabrication, installation, start-up and field service.



Design — Engineering — Machining — Fabrication — Assembly — Programming — Installation — Start-up — Service

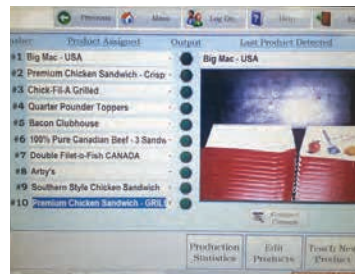
Advanced technology

Chicago Electric integrates Cognex products with other advanced technology.



SCADA

SCADA software creates graphical interfaces for vision systems that provide ease of use and extensive data management.



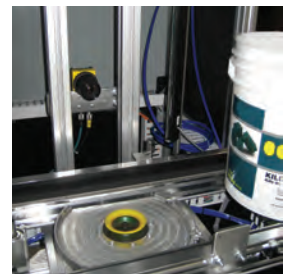
PLC Integration

As a Rockwell Recognized System Integrator, we are experts in combining Cognex technology with Allen-Bradley PLC's.



Robotics

As a Motoman Robotics Integrator, Cognex products are utilized for inspection and robotic positioning.



Motion Control

Linear and rotary servo motion controls are used for precise line scan applications and sensor positioning.

CHICAGOELECTRIC

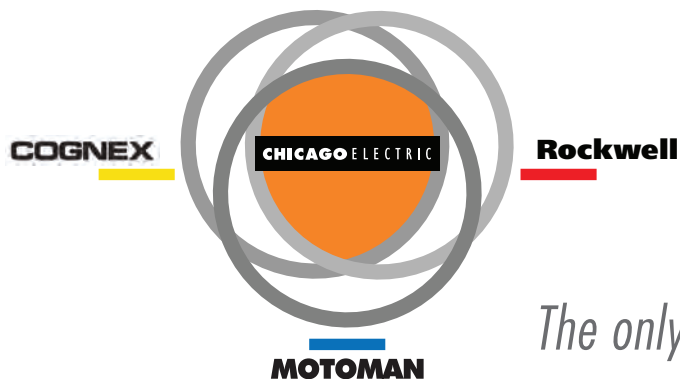


Innovation & Service since 1910

Chicago Electric is a world-class system integrator offering leading technology, comprehensive capability, and extensive experience. Founded in 1910, we are family owned and proud of our long heritage of quality workmanship and outstanding customer service.

We are in the business of making our customers' manufacturing...

better...faster...smarter!



The only R-M-C Integrator in the USA

ChicagoElectric.com

RockwellRobot.com



490 TOWER BLVD. CAROL STREAM, ILLINOIS 60188 USA 800.777.2901 Fax 630.784.0880