

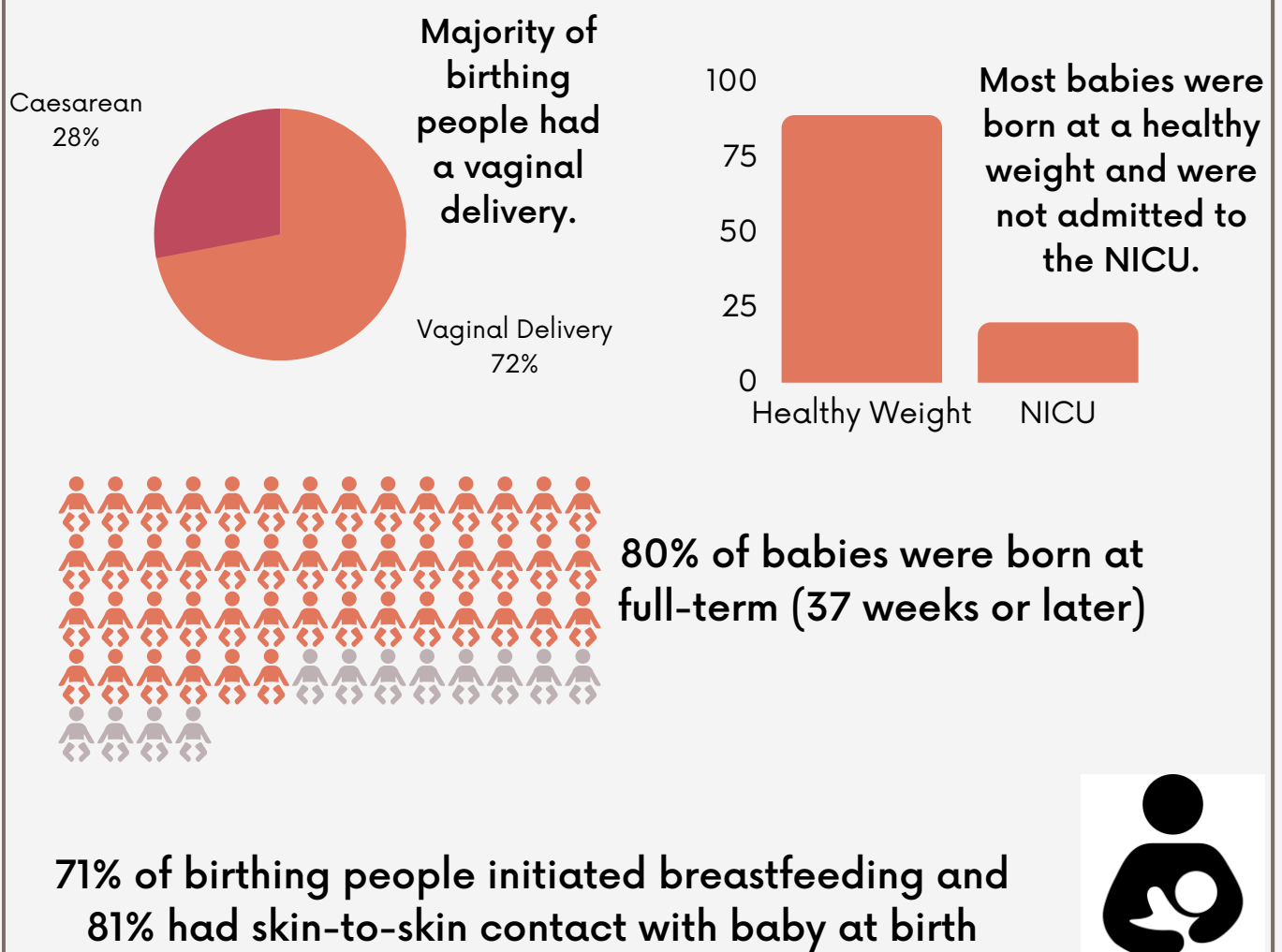
# WeRISE Community Doula Program

WeRise program evaluation data are presented for all clients served from January - December 2022.

## PEOPLE SERVED

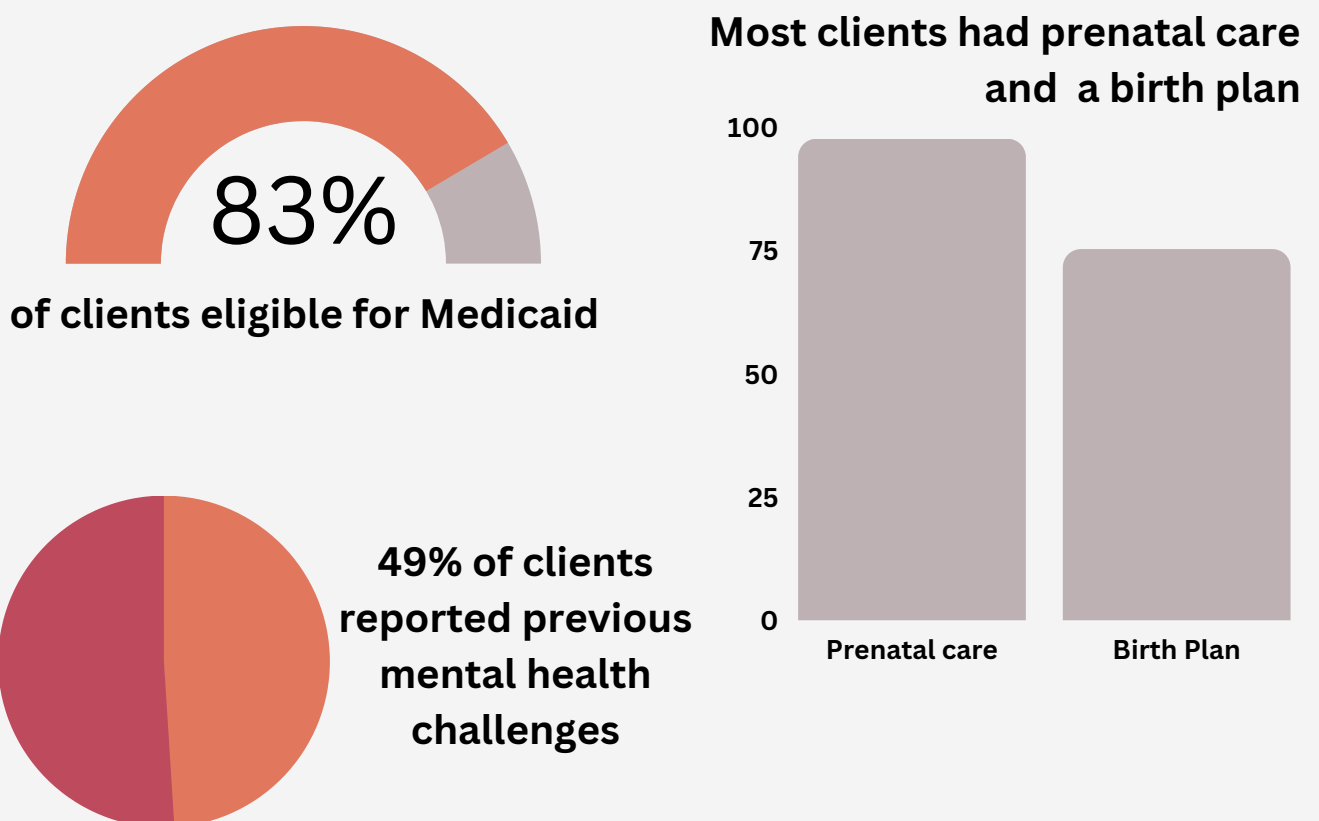
The WeRISE WPP program had **320** touch-points with and provided doula services to 130 birthing people from Southeastern Wisconsin by **15** Black Doulas.\*

## PROGRAM OUTCOMES



## PARTICIPANT DEMOGRAPHICS

Almost all (91. 2%) of clients self-identified their race as Black and 90% as non-Hispanic



## PROGRAM REFERRALS

2020: 175  
2021: 305  
2022: 542

Referrals to the WeRISE program from health care partners are increasing: demand for doulas is growing!

\*Report includes data for clients with data; pairwise deletion of data was conducted for variables with missing information.