

Industrial in a new light

Turnkey lighting and controls solutions
for warehouses, distribution centers and
logistic facilities



Benefits of quality industrial lighting.

Lighting affects productivity and contributes to the success of an industrial facility.

Warehouses, distribution centers and logistics facilities are growing rapidly with the booming market of online commerce and on-demand inventory. Whether a new construction project or retrofitting an existing building, the quality of the lighting makes a difference. Lighting can affect productivity, energy efficiency, maintenance costs, employee performance and even the number of errors and accidents, making a significant contribution to the safety of workers.

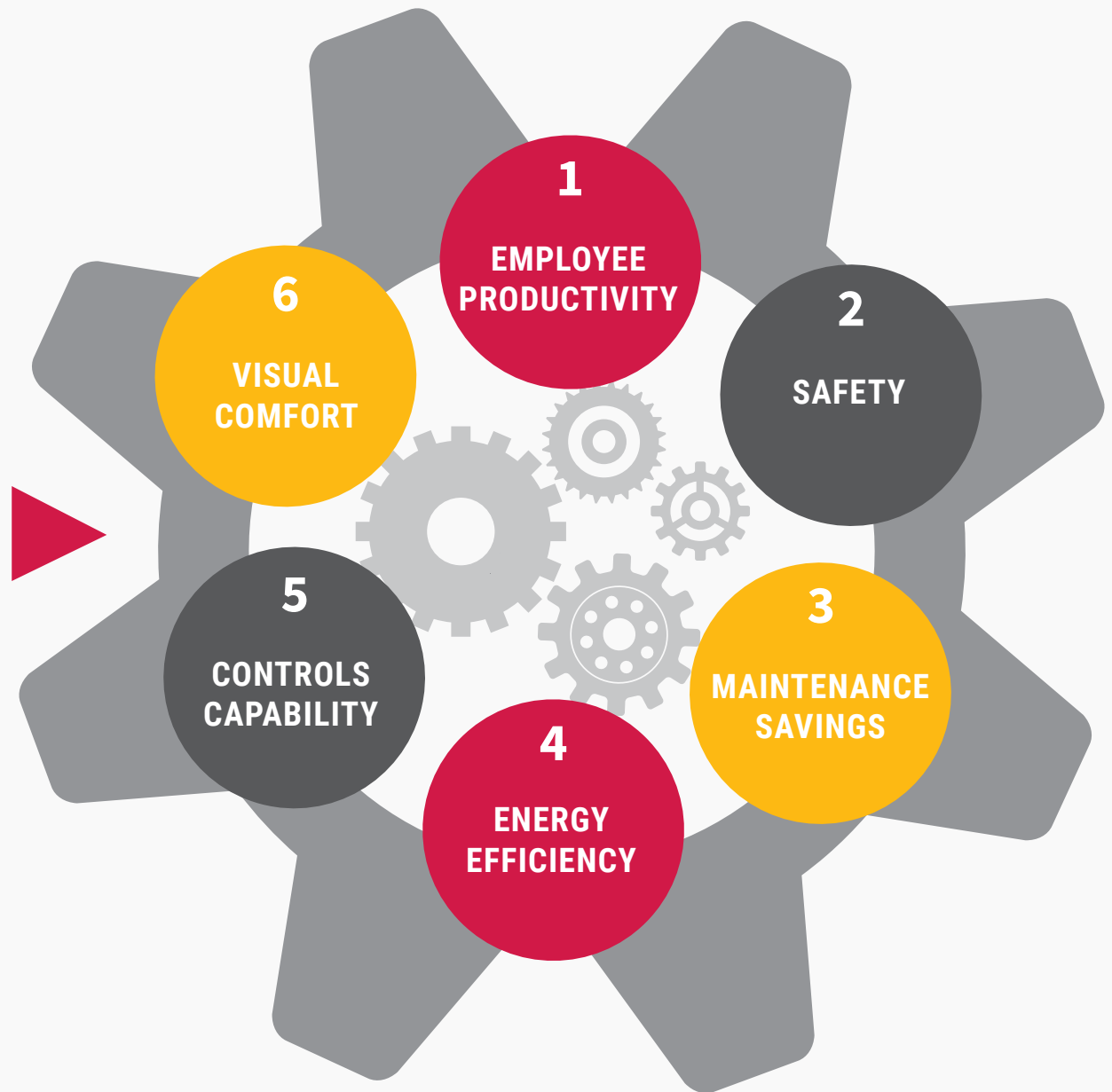
In addition to a safe and productive working environment, today's building owners seek new levels of smart facilities management. With the latest advancements in LED lighting and its control capabilities, building owners and warehouse managers are realizing the benefits through increased productivity, employee safety and energy savings.

The LED adoption rate in industrial spaces is expected to skyrocket from just 3% in 2014 to a whopping 76% in 2020 and 80% in 2035, according to Frost and Sullivan.

Reference: ANSI/IES RP-7-17



LED lighting
utilizes up to 80%
less energy than
traditional lighting
systems while
improving:



cooperlighting.com/industrialighting 

Why LED Industrial Warehouse Lighting?

Cooper Lighting Solutions offers a complete portfolio of high bay, low bay, vaportite, strips/wraps and traditional LED luminaires, as well as controls and connected lighting solutions, specifically designed to meet every industrial warehouse facility needs.



Increased productivity and safety - Better LED lighting will enhance the quality and safety of the workplace, improving mood, energizing workers and reducing workplace accidents due to the high quality of light LEDs emit. In addition to increased light levels, Cooper Lighting Solutions LED warehouse lighting solutions products meet all electrical code, life safety and compliance standards.



Maintenance Savings and Performance - LED lighting systems have a minimum expected life of 60,000 to 100,000 hours. These easily maintainable systems have an estimated maintenance savings of 60-78%. LEDs are available in a wide array of brightness levels (lumen output), colour variations (CCT) and aiming ability. From providing the best lighting for production and assembly spaces, to fully illuminating warehouses, LEDs are able to provide the ideal light for every situation.



Smart Lighting and Energy Savings - LED controls and connected systems help meet code compliances, provide deep energy savings and improve operations. From dimming and occupancy/motion sensors to networked wireless connected lighting systems, these systems have a positive impact on the bottom line. LED lighting can provide up to 80% less energy than traditional lighting systems. When integrating controls, savings can increase up to 83%.

Reference: ANSI/IES RP-7-17

Our brands

At Cooper Lighting Solutions, we deliver industry leading indoor and outdoor lighting products, lighting controls, smart lighting systems, programs and services.

METALUX



Commercial and industrial recessed, linear, surface and high bay solutions.

GREENGATE



Lighting control sensors, panels and switches for multiple control configurations.

HALO COMMERCIAL



Recessed downlights, surface, track and outdoor solutions.

LUMARK



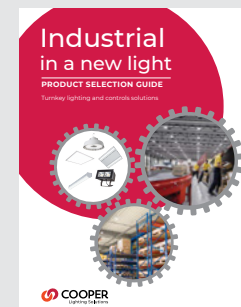
Outdoor lighting for commercial and industrial spaces.

FAIL-SAFE



Lighting for complex environments like food handling and vandal resistant

**DOWNLOAD
THE PRODUCT
SELECTION GUIDE**



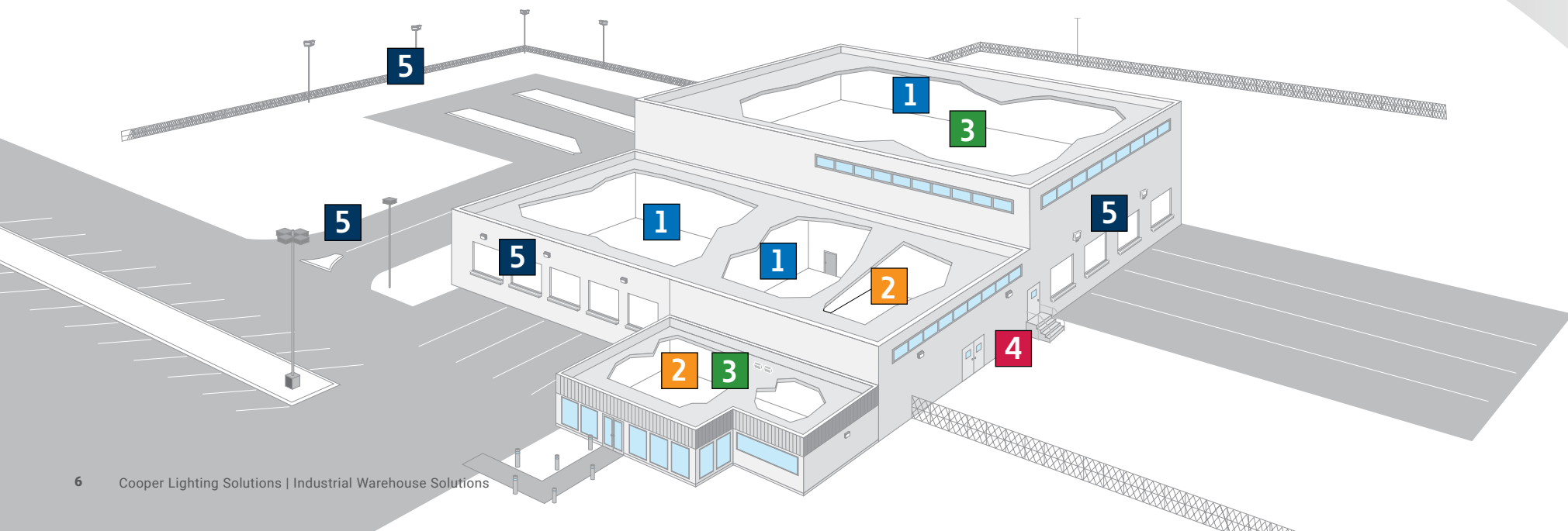
Complete sustainable lighting and controls solutions.

From warehouse aisles and assembly lines to offices and parking lots, Cooper Lighting Solutions is your one source for energy efficient and sustainable lighting, controls and connected lighting solutions. Our turnkey systems from our specialized brands address the specific needs of industrial facilities to provide a productive and safe environment.



SOLUTIONS FOR AN INDUSTRIAL ENVIRONMENT

Warehouse aisles • Fulfillment/Assembly areas • Offices • Kitchens and Cafeterias
Staircases and Corridors • Foyers • Bathrooms • Parking Lots and Pathways • Building exteriors...and more!



1 Warehouse/ distribution areas

Industry leading high bay LED technology offers instant on and off capability, multiple accessories, light distributions and mounting options.



UHB



VHB



OHB



SLSTP

2 Offices/ general areas

Ambient lighting solutions offer installation flexibility for a variety of applications.

Recessed downlights and cylinders designed to meet commercial energy code requirements.



Cruse ST



FPS



PR6

3 Lighting controls

Full line of relay panels and energy management systems for complete facility control of lighting systems.



LITEKEEPER



SWITCH PACK



OAC



OSW

4 Complex Environments

Complete selection of cleanroom, food handling, cold storage and vandal resistant lighting.



ENW



VT4S



HDF



TR11

5 Security/site

Outdoor site and security fixtures for flood and general area lighting.



NIGHT FALCON



PREVAIL



CARETAKER



WPLED

High Bay & Low Bay Lighting

Warehouse / Distribution / Logistic Centers

Lighting warehouses and distribution centers can be challenging. Not only does the lighting fixtures have to produce high lumen output at low wattages, but they must be able to operate in a wide range of temperatures and environments.

Cooper Lighting Solutions offers a complete selection of high bay solutions, which are designed for ceiling heights over 20 ft., and low bay solutions for ceilings under 20 ft. to meet the needed criteria.

METALUX LHB LED



METALUX UHB LED



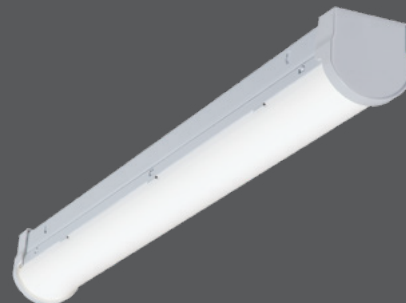
METALUX VHB LED



METALUX OHB LED



METALUX SLSTP LED



METALUX VT3 LED





							
		High Bay	High Bay	High Bay	High Bay	Strip	Vaportite
		LHB	UHB	VHB	OHB	SLSTP	VT3 LED
APPLICABILITY	Warehouses	★★★	★★	★★★	★★★	★★	★★★
	Manufacturing	★★	★★	★★	★★★	★★	★★★
	Storage	★	★	★★★	★★★	★	★★
	Large Indoor				★★★		★★★
	Complex Environments		★★	★			★★★
FEATURES / PERFORMANCE	Lumen Range	12,000 - 36,000	12,000 - 30,000	Lumen Select	12,000 - 60,000	2400-5800	2,000 - 8,000
	Efficacy (Max)	140 lm/W	137 lm/W	147 lm/W	207 lm/W	125 lm/W	154 lm/W
	CRI	80	80	70, 80, 90	70, 80, 90	80	70, 80, 90
	Distribution	M	M	N, W	N, W	G	G, W, P
	Sizes	13" x 2' & 4'	12" Dia	< 2'	Scalable	2', 4', 8'	2', 4'
	Housing	CRS	Diecast	CRS / Extruded	CRS	CRS	Fiberglass/Polyester
	Lensing	Acrylic	Polycarbonate	Polycarbonate	Acrylic	Clear, Poly	DR Acrylic or Polycarb
	Life (@ 60K hrs)	L84	L91	L83	L96	L84	L91
	Ambient Range	-40C to 40C	-40C to 45C	-40C to 55C	-40C to 55C	-20C to 40C	-40C to 50C
	Emergency	Remote	None	Remote	Integrated	None	Yes
	Ratings	Damp	IP65	Damp	Damp	Damp	IP67
	DLC	Premium	Premium	Standard, Premium	Premium	Standard	Premium

★★★ = high applicability, ★★ = medium applicability, ★ = low applicability, blank = non-applicable

Interior Lighting and Controls

Offices / Breakrooms / Corridors/ Restrooms

Our extensive portfolio of LED ambient luminaires and controls products offer a perfect balance of optical control, energy efficiency and installation flexibility.

AMBIENT



METALUX
CGT LED Panel Series



METALUX
Cruze ST LED Series



METALUX
FPS LED Panel Series

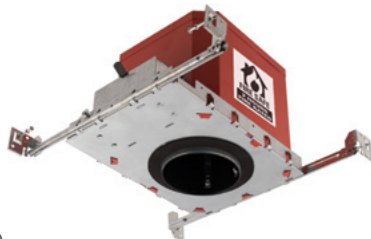
RECESSED



HALO COMMERCIAL
PR6 Series



HALO
LCR Light Commercial
Downlight

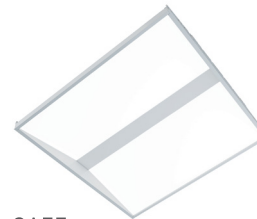


HALO
Fire Rated Housings

COMPLEX



FAIL-SAFE
High Pressure Hose
Down



FAIL-SAFE
Food Handling, NSF Rated



FAIL-SAFE
Vandal Resistant Linear

CONTROLS



GREENGATE
LightKeeper 8 Lighting
Control Panel



GREENGATE
OAC MicroSet Dual
Tech Ceiling Sensors



GREENGATE
0-10V OSW
Wallbox Dimmer
Sensor

Exterior Lighting

Parking Lots / Pathways / Canopies

The comprehensive line of outdoor site and security luminaires provides high-performance illumination, feature rugged construction and high-efficiency optics for maximum energy savings and reliability.

WALL & CANOPY



LUMARK
WP LED Glass Wall Pack



LUMARK
Crosstour LED Wall Pack



LUMARK
CLCS LED Canopy

FLOOD / FACADE



LUMARK
Night Falcon Floodlight

AREA/SITE



LUMARK
Prevail LED Area/Site



LUMARK
LAS Area/Site



LUMARK
Caretaker LED Area/Site

Connected Lighting Solutions

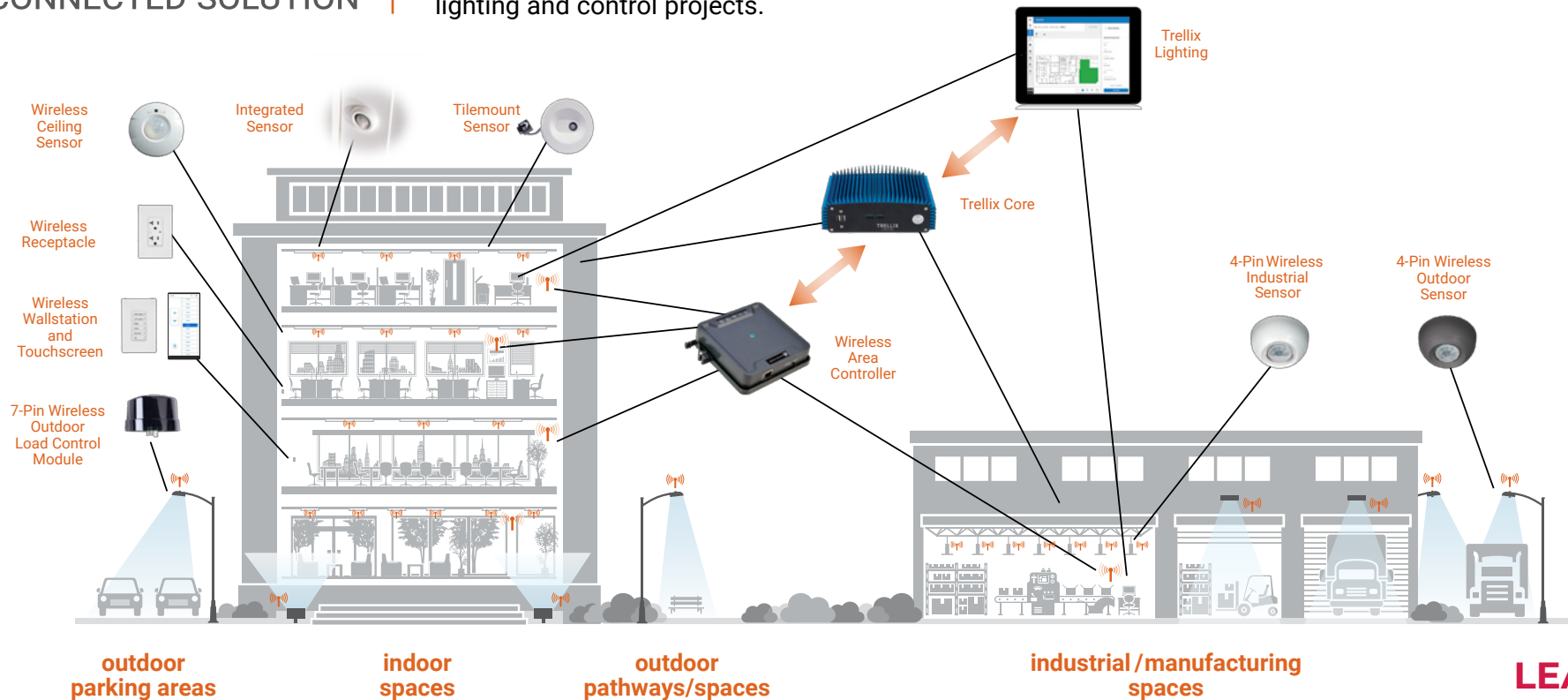
Savings that impact the bottom line!

With the most connectivity options on the market, our portfolio of WaveLinx Connected Lighting Solution and Trellix Smart Spaces IoT Platform improve operations by helping to increase safety, meets code compliance and brings new efficiencies to light, while providing years of hassle-free performance and savings.

WaveLinx

CONNECTED SOLUTION

WaveLinx out-of-the-box functionality provides the fastest control confirmation on the market. It's also one of the easiest lighting systems to install and manage. WaveLinx is the designer and contractor choice for indoor and outdoor spaces. Complete projects faster while reducing cost with the WaveLinx system, for LED lighting and control projects.



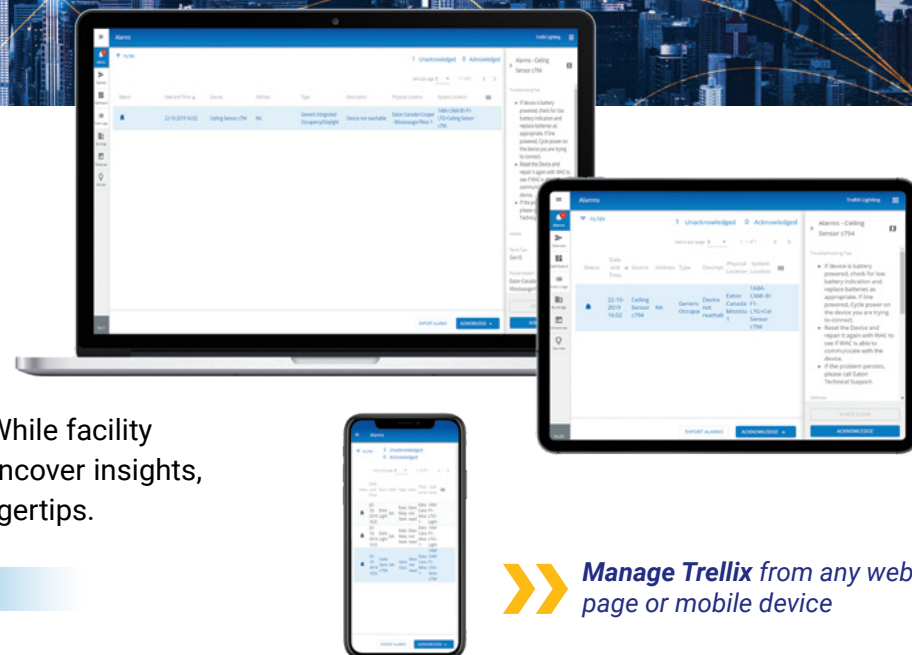
**LEARN
MORE
HERE** 



TRELLIX

SMART SPACES IoT PLATFORM

We've made it easier for businesses to aggregate and make sense of data. While facility managers were once burdened with sorting through piles of documents to uncover insights, systems like the Trellix Smart Spaces IoT System puts everything at their fingertips.



Manage Trellix from any web page or mobile device

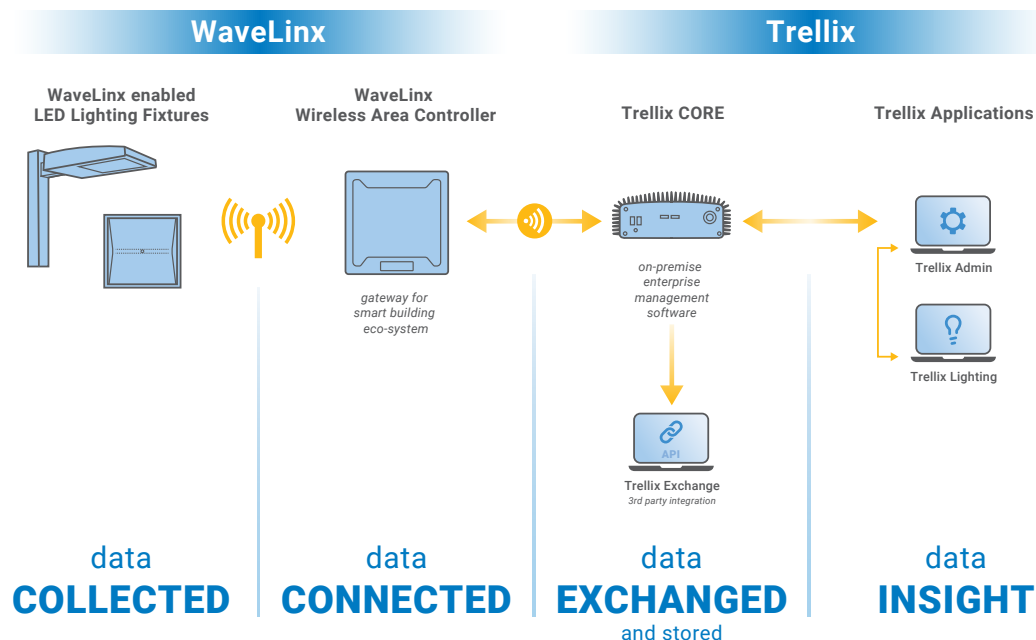
Trellix Devices



Trellix Core Pro



Trellix Core Enterprise /
Virtual Trellix Core Enterprise



**LEARN
MORE
HERE**

MWS Modular Wiring Systems

Less time. Less labour. Lower cost.

Cooper Lighting's Modular Wiring System (MWS) lowers total job cost vs. traditional wiring methods in new construction and renovation projects. MWS is simple, cost-effective, and can be installed in minutes. Components arrive at the job site completely assembled and ready to be snapped together to form a branch circuit system.

NO BENDING, CUTTING, OR ASSEMBLY IS NEEDED.

- Seamlessly works with recessed, pendant, surface and highbays
- Reduces installation setup time and labour costs
- Flexible, reconfigurable system enabling future changes within a space
- Allows for make or break under load
- Improved worker safety when servicing fixtures



Faster Projects

Reduce construction cycle time with less labour and faster installation.



Flexible & Sustainable

Saves an average of 50% off labour and project expenses.



Maximum Savings

Easily configure the system for future additions and renovations.



**LEARN
MORE
HERE**

Planning Installation Checklist



Coordinate your lighting project with your local Cooper Lighting Authorized Distributor and Manufacturer's Representative.



Choose lighting fixtures and controls that meet your space requirements for operational efficiency.



Determine the lighting levels required to meet local code and safety requirements.



Select the highest energy efficient LED luminaires that meet your operating criteria.



Incorporate lighting controls to increase energy efficiency, and lower your total cost of ownership.



Schedule and prepare your site for installation.

**FIND YOUR LOCAL COOPER LIGHTING AUTHORIZED
DISTRIBUTOR AND MANUFACTURER'S REPRESENTATIVE**



Industrial in a new light

Turnkey lighting and controls solutions
for warehouses, distribution centers and
logistic facilities

Lighting Brands

Ametrix
AtLite
Corelite
Ephesus
Fail-Safe
Halo
Halo Commercial
Invue
io
Iris
Lumark
Lumière
McGraw-Edison
Metalux
MWS
Neo-Ray
Portfolio
RSA
Shaper
Streetworks
Sure-Lites

Controls Brands

Greengate
Fifth Light

Connected Lighting Systems

HALO Home
WaveLinx

IoT Platforms

Trellix



Cooper Lighting Solutions

1121 Highway 74 South
Peachtree City, GA 30269
P: 770-486-4800
www.cooperlighting.com

Canada Sales
5925 McLaughlin Road
Mississauga, Ontario L5R 1B8
P: 1-800-863-1354

© 2021 Cooper Lighting Solutions
All Rights Reserved
Printed in USA
Publication No. BR525407EN
April 2021

Cooper Lighting Solutions is a
registered trademark.

All other trademarks are property
of their respective owners.

Product availability, specifications,
and compliances are subject to
change without notice.