

SPEED LIMIT

25

TILDENVILLE SCHOOL RD

POSTED

SPEED LIMIT

NOT TO SCALE

Owner

Tildenville School Rd Detour Ph 2

Project Number

0407-253-4337

Prepared by

Russell Gellhouse

Office

407-253-1342

Project Name

Tildenville School Rd Detour Ph 2

Submitted by

Southern Development & Construction Inc. ACME BARRICADES, LC

Date

04/07/2025

FDOT

This Certifies that

RUSSELL J. GELHAUSE

Has Completed a Florida Department of Transportation Approved

Temporary Traffic Control (TTC) Advanced (Refresher) Course.

Date Expires: 04/07/2025

Instructor: Ronald C. Appel

Certificate # 84282

FDOT Provider # 134

A&S Consultants, Inc.

Phone: 286-788-9859

5545 Birchmark Lane

Sanford, FL 32773

www.floridatotal.com

nicole@aswconsultants.com

A&S

Consultants, Inc.

THIS MAINTENANCE OF TRAFFIC PLAN ("MOT PLAN") IS THE EXCLUSIVE PROPERTY OF ACME BARRICADES, LC, AND IS PROVIDED SOLELY FOR INFORMATIONAL PURPOSES. THE MOT PLAN HAS BEEN PREPARED FOR THE EXCLUSIVE AUTHORIZED INTERPRETATION, IMPLEMENTATION AND NECESSARY MODIFICATION BY ACME BARRICADES, LC ONLY. THE MOT PLAN HAS NOT BEEN PREPARED FOR DISTRIBUTION TO OR INTERPRETATION, IMPLEMENTATION OR RELIANCE BY ANY OTHER PARTY. ACME BARRICADES, LC DOES NOT MAKE ANY WARRANTIES OR REPRESENTATIONS OF ANY KIND RELATED TO THIS MOT PLAN. IN EXCHANGE FOR THE RECEIPT OF THIS INFORMATIONAL ONLY MOT PLAN, THE RECIPIENT HEREBY AGREES TO INDEMNIFY, DEFEND AND HOLD HARMLESS ACME BARRICADES, LC AND ITS EMPLOYEES FROM ANY AND ALL CLAIMS ARISING FROM THE RECIPIENT'S USE OF THIS INFORMATIONAL ONLY MOT PLAN.

LEGEND

WORK ZONE

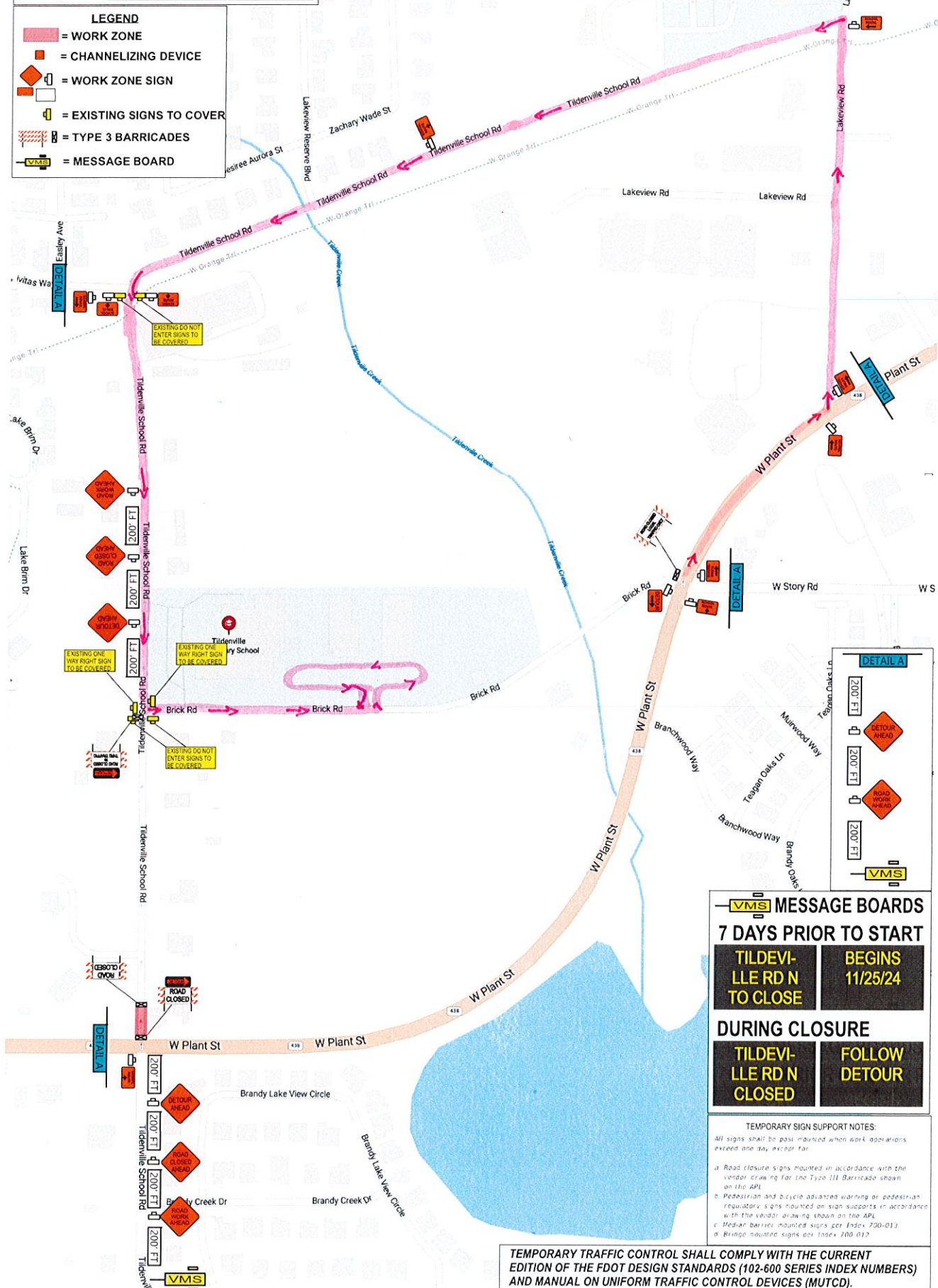
CHANNELIZING DEVICE

WORK ZONE SIGN

EXISTING SIGNS TO COVER

TYPE 3 BARRICADES

MESSAGE BOARD



DETAIL A

200 FT

200 FT

200 FT

200 FT

DETOUR AHEAD

ROAD WORK AHEAD

VMS

VMS MESSAGE BOARDS

7 DAYS PRIOR TO START

TILDEVILLE RD N TO CLOSE

BEGINS 11/25/24

DURING CLOSURE

TILDEVILLE RD N CLOSED

FOLLOW DETOUR

TEMPORARY SIGN SUPPORT NOTES:

All signs shall be past mounted when work operations exceed one day, except for:

- a. Road closure signs mounted in accordance with the vendor drawing for the Type III Barricade shown on the APL
- b. Pedestrian and bicycle advanced warning or pedestrian regulatory signs mounted on sign supports in accordance with the vendor drawing shown on the APL
- c. Median barrier mounted signs per Index 700-013
- d. Bridge mounted signs per Index 700-012

TEMPORARY TRAFFIC CONTROL SHALL COMPLY WITH THE CURRENT EDITION OF THE FDOT DESIGN STANDARDS (102-600 SERIES INDEX NUMBERS) AND MANUAL ON UNIFORM TRAFFIC CONTROL DEVICES (MUTCD).