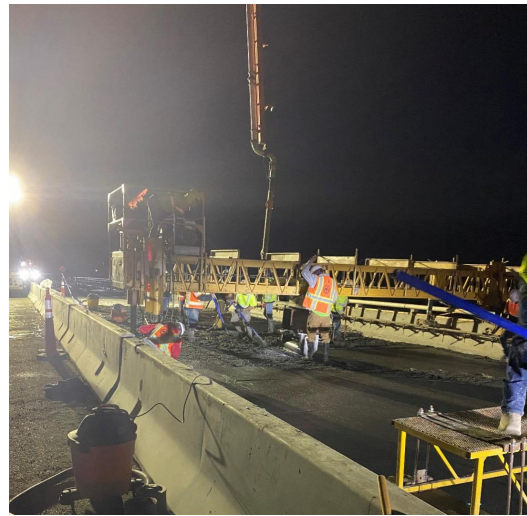


CONSTRUCTION UPDATE

I-84 Bridge Maintenance, Summer 2023

I-84 westbound on-ramp to Boise closed at Exit 90 in Mountain Home on Tuesday, Sept. 26

The Idaho Transportation Department will close the I-84 westbound on-ramp at Exit 90 in Mountain Home **Tuesday morning, Sept. 26**. Due to weather conditions, crews were unable to pour concrete last week as planned. This closure will allow paving to continue on the Exit 90 bridge deck over I-84.



Here's what to expect:

- The closure will begin at 3 a.m. and be re-opened by no later than 3 p.m.
- All traffic heading westbound to Boise will be detoured to Exit 95 in Mountain Home.
 - [Click here to view the detour map.](#)
- Once the ramp is opened, the speed limit on the ramp will be lowered to 35 mph.
- The westbound off-ramp remains closed at Exit 90.
- The eastbound on-and off-ramps will be open to traffic.



[Click here to view the project fact sheet.](#)

TO STAY INFORMED, SIGN UP FOR CONSTRUCTION UPDATES:

TEXT **84BRIDGES** TO **1-866-483-8422** | EMAIL **84CORRIDOR@ITD.IDAHO.GOV**
CALL **208-391-2979** | LEARN MORE AT **ITDPROJECTS.ORG/84BRIDGES**



[Unsubscribe kate@rbc.net](#)

[Update Profile](#) | [Constant Contact Data Notice](#)

Sent by 84corridor@itd.idaho.gov powered by



Try email marketing for free today!