

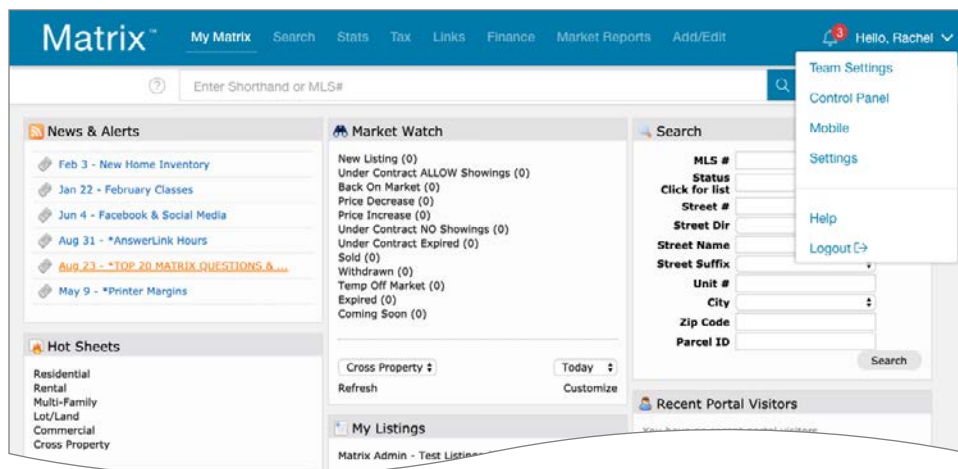
What's New in Matrix™ X

A New User Experience

The latest version of Matrix from CoreLogic® transforms the user experience. The new look and feel combines modern color palettes, iconography, navigation, and design. User interface and user experience are not just considerations, they are the foundation of the Matrix X development process. Watch for more updates coming soon.

Navigation

We designed a clean new header and navigation bar with features right where you'd expect them. A new notifications icon alerts you to important updates, and a new menu under the user's name provides quick access to personal settings, account information, and help. Alerts of new Concierge matches have been moved to the new notification center for quick and easy access.



Matrix
performance
you can count on


 **850K+**
end users


 **25M**
logins per month

 **500M**
sub-second searches
per month

 **~1.9M**
active listings

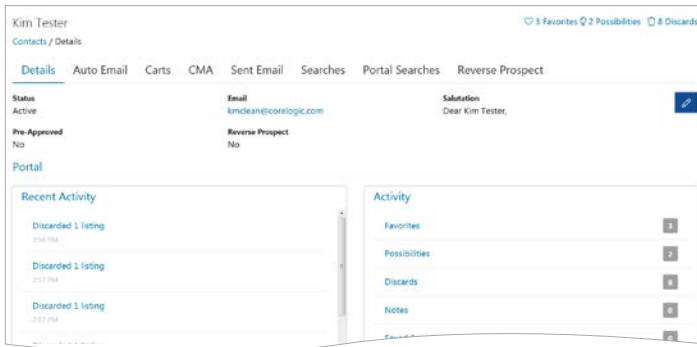
 **~1B**
images

 **7.4M+**
consumers used the
Client Portal in 2019

 **310M+**
listings viewed on the
Client Portal in 2019

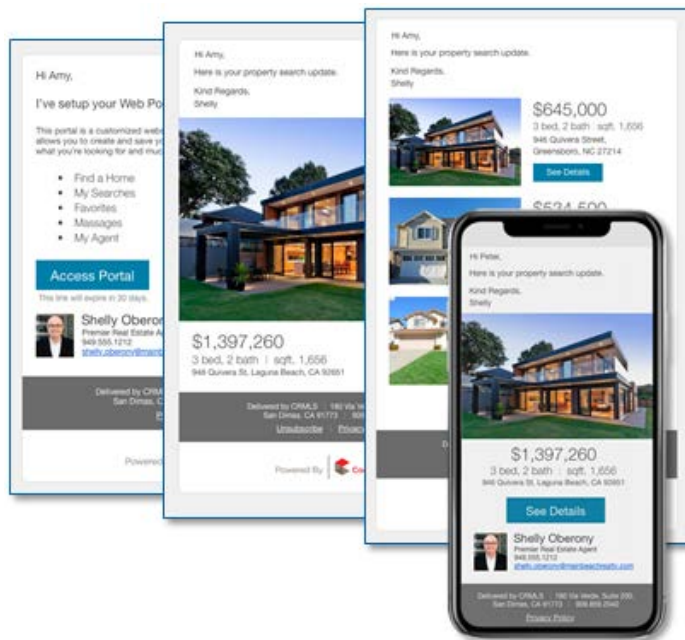
Contacts Module

We recreated the Contacts module using best-practice webpage design while maintaining a familiar workflow, so there's no need for retraining. Tabs and widgets provide better readability and accessibility.



Stunning Emails

Conveying a professional image is key, so we updated Matrix emails with a clean, modern design.



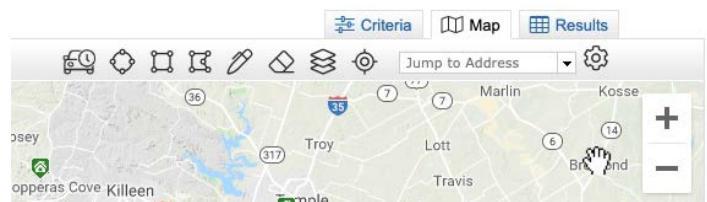
Mapping

The map screen now utilizes the full width of browser, which is great for today's widescreen monitors. We improved the map toolbar with easier icons and tooltips.

We added in Map and Results tabs to Concierge approvals. Switch between map view and results view just like you would with regular search results. You can also now search the intersection of multiple map shapes.

Matrix 360* users have access to new map layers that make it easy to visualize specific property data regardless of the current search criteria. Available layers include Listing Status, Tax Sales, and Distressed Properties. For example, you can view Hot Sheet listings on the map and then turn on the Tax Sales layer to view additional properties that recently sold outside the MLS.

**Matrix 360/Realist® required.*



For more information, visit corelogic.com/matrix.