

AUCTION

7% Admin Fee Will Be Charged on All On-Site Purchases
10% Total Internet Bidding Fee Will Be Charged on All Internet Purchases
Auctioneers: Jim Richie - TX Lic #13742 • Dan Kruse - TX Lic# 7674



Rigs Last Worked September 2025



(3 of 5) SERVICE KING 575 Well Service Rigs w/ CAT 4 & CAT 3 Inspections

WEDNESDAY • JANUARY 21, 2026 • ODESSA, TEXAS

9:00AM (CT) @
THE MCM ELEGANTE HOTEL

After 44 Years of Business, GREAT BASIN PETROLEUM SERVICES has Entrusted Superior Auctioneers to Liquidate Their Well Maintained Rigs & Equipment

(18) SERVICE KING SK575, CAMERON C400, & WILSON 42B WELL SERVICE RIGS • (4) MACK KILL TRUCKS
(2) LOGAN VTS-100 POWER SWIVELS • (4) 130-BBL KILL TRAILERS • (1) VACUUM TRUCK
(1) 130-BBL VACUUM TRAILER • (22) CHEVY, GMC & FORD PICKUPS • (16) DOGHOUSE TRAILERS



(2) 2015 MACK Kill Trucks & Trailers



CAMERON C400 Service Rig w/ 06/2024 CAT 4 Inspection

FOR MORE INFO Call 432-296-4465 or Visit www.SuperiorAuctioneers.com



SERVICE KING 575 Well Service Rig w/ 02/2025 CAT 3 Inspection

YARD #1 - ODESSA, TX

ADDRESS: Superior Energy
Auctioneers @ 11611 West CR 128,
79765

CONTACT: (432) 296-4465

WELL SERVICE RIGS

RIG 216 (CAT 4 Good Till 2030)

2017 SERVICE KING 575 Well Service Rig, Disc Assist Brake, p/b DETROIT Series 60 Eng, ALLISON 4500 OFS Trans, 104'H x 250,000# Mast, On 5-Axle Carrier, Adj Work Platform, 445/65R22.5 Front & 11R22.5 Rear Tires • Posi-Stop • MCKISSICK 83 AWT 100-Ton Tubing Block

RIG 208 (DRAGON 12/23 CAT 4 Inspection)

2011 SERVICE KING 575 Well Service Rig, Disc Assist Brake, p/b DETROIT Series 60 Eng, ALLISON 4500 OFS Trans, 104'H x 250,000# Mast, On 5-Axle Carrier, Adj Work Platform, 385/65R22.5 Front & 11R22.5 Rear Tires • MCKISSICK 83 AWT 100-Ton Tubing Block

RIG 205

2013 SERVICE KING 575 Well Service Rig, Disc Assist Brake, p/b DETROIT Series 60 Eng, ALLISON 4500 OFS Trans, 104'H x 250,000# Mast, On 5-Axle Carrier, Adj Work Platform, 445/65R22.5 Front & 11R22.5 Rear Tires • MCKISSICK 83 AWT 100-Ton Tubing Block

RIG 206 (DRAGON 02/25 CAT 3 Inspection)

2011 SERVICE KING 575 Well Service Rig, Disc Assist Brake, p/b DETROIT Series 60 Eng, ALLISON 4500 OFS Trans, 104'H x 250,000# Mast, On 5-Axle Carrier, Adj Work Platform, 445/65R22.5 Front & 11R22.5 Rear Tires • Posi-Stop • MCKISSICK 83 AWT 100-Ton Tubing Block

RIG 207

2011 SERVICE KING 575 Well Service Rig, Disc Assist Brake, p/b DETROIT Series 60 Eng, ALLISON 4500 OFS Trans, 104'H x 250,000# Mast, On 5-Axle Carrier, Adj Work Platform, 385/65R22.5 Front & 11R22.5 Rear Tires • MCKISSICK 83 AWT 100-Ton Tubing Block

RIG 210 (DRAGON 3/20 CAT 4 Inspection)

2007 CAMERON C400 Well Service Rig, Disc Assist Brake p/b DETROIT Series 60 Eng, ALLISON 5610 Trans, 104'H 250,000# Mast, On CCC 5-Axle Carrier, Adj Work Platform, 445/65R22.5 Front & 12R22.5 Rear Tires • MCKISSICK 83 AWT 100-Ton Tubing Block

RIG 209 (DRAGON 6/24 CAT 4 Inspection)

2007 CAMERON C400 Service Rig, Disc Assist Brake p/b DETROIT Series 60 Eng, ALLISON 5610 Trans, 104'H 250,000# Mast, On CCC 5-Axle Carrier, Adj Work Platform, 445/65R22.5 Front & 12R22.5 Rear Tires

RIG 213 (DRAGON 10/19 CAT 4 Inspection)

2006 CAMERON C400 Well Service Rig, Disc Assist Brake, p/b DETROIT Series 60 Eng, ALLISON 5610 Trans, 96'H 250,000# SHL Mast, On 5-Axle Carrier, Adj Work Platform, 445/65R22.5 Front & 12R22.5 Rear Tires • MCKISSICK 83 AWT 100-Ton Tubing Block

RIG 212

2007 CAMERON C400 Well Service Rig, Disc Assist Brake, p/b DETROIT Series 60 Eng, ALLISON 5610 Trans, 104'H 250,000# Mast, On CCC 5-Axle Carrier, Adj Work Platform, 445/65R22.5 Front & 12R22.5 Rear Tires

RIG 211 (DRAGON 11/22 CAT 3 Inspection)

2007 CAMERON C400 Well Service Rig, Disc Assist Brake, p/b DETROIT Series 60 Eng, ALLISON 5610 Trans, 104'H 250,000# Mast, On CCC 5-Axle Carrier, Adj Work Platform, 445/65R22.5 Front & 12R22.5 Rear Tires • MCKISSICK 83 AWT 100-Ton Tubing Block

RIG 215

WEINS 550HP Well Service Rig, Disc Assist Brakes, p/b DETROIT Series 60 Eng, ALLISON 5860 Trans, 96'H x 210,000# SHL Mast, On 5-Axle Carrier, Adj Work Platform, 385/65R22.5 Front & 11R22.5 Rear Tires • 100 Ton Block

RIG 225

1982 WILSON 42B Well Service Rig, Disc Assist Brake, p/b DETROIT Series 60 Eng, ALLISON 750 Trans, 96'H x 250,000# Mast, On 5-Axle Carrier, Adj Work Platform, 385/65R22.5 Front & 11R22.5 Rear Tires • Oil Country 100 Ton Block

RIG 223

1982 WILSON 42B Well Service Rig, Disc Assist Brakes, p/b DETROIT Series 60 Eng, ALLISON 5610 Trans, WILSON 96'H x 180,000# Mast, On 5-Axle Carrier, Adj Work Platform, 385/65R22.5 Front & 11R22.5 Rear Tires • 100 Ton Block



(3 of 5) CAMERON C400 Well Service Rigs w/ CAT 4 & CAT 3 Inspections



(1 of 2) 2015 TROXELL 130-Bbl Kill Trailers

RIG 219

SKYTOP BREWSTER 4210 Well Service Rig, Disc Assist Brakes, p/b DETROIT Series 60 Eng, ALLISON 5860 Trans, 96'H x 180,000# Mast, On 5-Axle Carrier, Adj Work Platform, 445/65R22.5 Front & 11R22.5 Rear Tires • 100 Ton Block

RIG 214

1982 WILSON 42B D/D Well Service Rig, Disc Assist Brakes, p/b DETROIT Series 60 Eng, ALLISON 5860 Trans, 96'H x 180,000#SHL Mast, On 5-Axle Carrier, Adj Work Platform, 385/65R22.5 Front & 11R22.5 Rear Tires

POWER SWIVELS

(2) LOGAN VTS-100 10K Power Swivels EA p/b CAT C-11 Eng (1,230 & 1,480 Hours), EA On T/A BH Trailer

KILL / VACUUM TRUCKS & TRAILERS

(2) 2015 MACK GU713 Kill Trucks EA p/b MACK MP8 Eng, EATON 8-Spd Trans, CHELSEA PTO GARDNER DENVER TEE Triplex Pump

(2) 2005 MACK CV713 Kill Trucks EA p/b MACK AI350 Eng, Maxitorque 8-Spd Trans, PTO, GARDNER DENVER TEE Triplex Pump

2006 MACK CV713 Vacuum Truck p/b MACK AMI-370 Eng, Maxitorque 8-Spd Trans, PTO, w/ FRUITLAND RCF-500 Vacuum Pump

2015 & 2012 TROXELL 130-Bbl Kill Trailers EA w/ 1/4" A36 Shell Material & AT240 Lining

(2) 2011 OVERLAND 130-Bbl Kill Trailers EA w/ 1875 MS Shell Liner

1978 HOBBS T/A 130-Bbl Vacuum Trailer



(5 of 16) Crew House Trailers



1-432-296-4465

11611 West County Rd 128, Odessa, TX 79765

www.SuperiorAuctioneers.com

AUCTION INFORMATION

Date & Time: Wednesday, January 21, 2026 @ 9:00AM (CT)

Auction Venue:

MCM Elegante • (432) 368-5885
5200 E University • Odessa, TX 79765

Nearby Hotels:

Hampton Inn • (432) 363-2900
Holiday Inn • (432) 366-5900

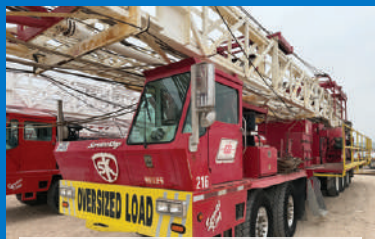
Airport: Midland International Airport (MAF)

Online Bidding: Provided by Proxibid.com. Please register to bid at this auction 48-Hours Prior to Sale Day.

BIDDING TERMS / SALES TAX

- All Bidders must register and receive a bidder number. All purchases must be **PAID IN FULL** before equipment will be released. Acceptable forms of payment include Wire Transfer, Cashier's Check or Personal/Company Check Accompanied by **BANK LETTER OF GUARANTEE**. No cash, drafts, credit cards or ACH payments will be accepted. All printed information regarding this sale is merely a guide, subject to change, and neither the Auction Company, Sellers, nor Publishers shall be liable for any errors. ALL items are sold "AS IS, WHERE IS, WITH ALL FAULTS" without a warranty or guarantee of any kind, whether written, expressed or implied as to merchantability or fitness for a particular purpose. **A 10% Administrative Fee will be charged on all purchases (10% Total for Internet Purchases).**
- Sales Tax will be charged on all purchases, unless the Buyer provides proper exemption documents required by the local Government Tax Agency where assets are located. Buyer agrees to pay all applicable sales tax on all purchases, unless they meet requirements mentioned above. Buyer also agrees to pay any sales tax that may be assessed after initial payment has been received. International Buyers must pay the sales tax as shown on your invoice. Proper documentation must be provided in a timely manner to assist in obtaining any sales tax refund.

Visit SuperiorAuctioneers.com/terms for a complete list of our bidding terms and requirements



2017 SK 575 w/ CAT 4 Good thru 2030



(22) 2024-2014 Pickups



(1 of 2) LOGAN VTS-100 10K Power Swivels



2015 MACK Kill Truck w/ G-D TEE

AUCTION

JANUARY 21, 2026
9:00AM (CT)
ODESSA, TX



SCAN ME



8092 S Yale Ave, #FF
 Tulsa, OK 74136

PRESORTED
 FIRST CLASS MAIL
 US POSTAGE
PAID
 SAN ANTONIO TX
 PERMIT NO. 1001

ODESSA, TX • WEDNESDAY • JANUARY 21, 2026 • 9AM CT

SERVICE TRUCK & PICKUPS

- 2017 FORD F-350 XLT Crew Cab Service Truck, p/b 6.7 Eng, w/ LINCOLN Ranger 250 Welder, Air Comp p/b Kohler Gas Eng
- 2011 FORD F-550 Super Duty Roustabout Truck p/b 6.7 Powerstroke Eng, w/ 12'L Steel Bed, 11'L Poles, Winch, Tool Cabinets
- 2024 CHEVY 2500 HD Crew Cab Pickup, p/b Vortec 6.6L Gas Eng, ALLISON Trans
- (4) 2021-2020 CHEVY 2500 HD 4x4 Crew Cab Pickup, p/b Vortec Gas Eng
- 2019 FORD F-250 FX4 4x4 XL Crew Cab Pickup, p/b 6.2L Gas Eng
- (3) 2019 CHEVY 2500 HD 4x4 Crew Cab Pickup, p/b 6.6L Gas Eng
- 2018 GMC SIERRA 2500 HD Crew Cab Pickup, p/b 6.0 L Gas Eng

- 2018 CHEVY 2500HD Crew Cab Pick Up, p/b Vortec Gas Eng
- 2015 FORD F-250 Super Duty 4x4 Crew Cab Pickup, p/b 6.7 Powerstroke Eng
- (8) 2014-2012 CHEVY 2500 HD Z71 4x4 Crew Cab P/U, p/b Vortec Gas Eng
- 2011 & 2006 CHEVY 2500 HD Crew Cab Pick Up, p/b Vortec Gas Eng

TRAILERS

- (10) 2013-2012 CONTINENTAL CARGO T/A Bumper Pull Crew House Trailers
- (6) TERRY'S TRAILERS T/A Bumper Pull Crew House Trailers Misc Gooseneck & Utility Trailers

YARD #2 - ODESSA, TX

ADDRESS: Great Basin Petroleum Services @ 4909 S County Rd 1303, 79765
CONTACT: (432) 296-4465

WELL SERVICE TOOLS

- (2) MCKISSICK 100 Ton Blocks
- (2) TOWNSEND 81 7-1/16" 3M Manual BOPs
- (2) TOWNSEND 7-1/16" 2/3M Hyd BOPs
- (18) Tubing & (16) Rod Tongs, (15) CAVINS Air Slips, Elevator Links, 2-7/8" & 2-3/8" Tubing Elevators, Rod Elevators, Rod Hooks, Wt Indicators, Air Packs

YARD #3 - ODESSA, TX

ADDRESS: 1800 S Belk Ave, 79763
CONTACT: (432) 296-4465

WELL SERVICE RIGS & EQUIPMENT

RIG 217
 SKYTOP BREWSTER Well Service Rig w/ PARMAC 122 Brake, p/b DETROIT Series 60 Eng

w/ ALLISON 5860 Trans, w/ 96'H x 210,000# SHL Mast, On 5-Axle Carrier

RIG 222

WILSON MOGUL 42 Well Service Rig w/ PARMAC 15" DR Brake, p/b DETROIT Series 60 w/ ALLISON 5860 Trans, 96'H x 180,000# SHL Mast, On 5-Axle Carrier

RIG 221

CORSAIR Well Service Rig p/b DETROIT Series 60 Eng w/ ALLISON 5860 Trans, 96'H x 215,000#SHL Mast, On 5-Axle Carrier • 100-Ton Tubing Block

1994 MACK RD688S p/b MACK Eng w/ Maxitorque 8-Spd Trans • 130 Bbl Vac Trailer • CHEVY C/50 Roustabout Truck • Crewhouse Trailers • Rig Mats