



TRANSFORMING MELANOMA DETECTION THROUGH TELEDERMATOLOGY WITH THE DERMTECH PLA

[INSERT DATE]

MELANOMA WON'T WAIT. NEITHER SHOULD YOUR PATIENTS.

Using teledermatology, practices can continue to support patients with virtual examinations. If a pigmented lesion is suspicious of melanoma, the DermTech PLA can be ordered and sent directly to your patient for clinician-supervised sample collection without leaving their home.

How it works



- 1 Hold an initial teledermatology appointment to assess patient's skin
- 2 If appropriate, order the DermTech PLA , and the kit will be shipped directly to the patient with support form DermTech Customer Service
- 3 Set follow-up teledermatology appointment to supervise sample collection with patient
- 4 DermTech analyzes returned sample(s) and delivers results to you
- * *The easiest way to order the PLA and access reports is through the DermTech Physician Portal. If your office is not yet set up, **please email operations@dermtech.com** and our Customer Service department will send you a link to register.*

INITIAL EXAM: EVALUATE YOUR PATIENT



- Initial exam is executed through virtual teledermatology visit or may be a follow-up from a previous in-office visit
- If a pigmented lesion is identified as suspicious of melanoma, you may elect to utilize the PLA to test the lesion and rule-out melanoma

Schedule



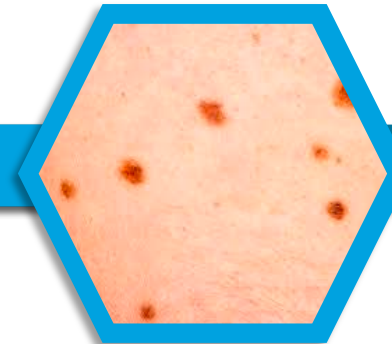
Schedule teledermatology appointment leveraging interactive audio and video telecommunications system

Examine



Walk patient through assessment, asking patients to mark and take photos of suspicious lesions

Evaluate



Evaluate and determine if the DermTech PLA is necessary to test suspicious lesion(s)

POST EXAM: ORDER THE DERMTECH PLA



- To request the DermTech PLA be sent to your patient, you must complete and submit a Test Requisition form
- Test Requisition forms may be obtained from DermTech Customer Service or downloaded from the DermTech.com Physician Page: <https://bit.ly/DT-PLA-TR>
- You may also upload your own laboratory test requisition along with patient demographics in the DermTech Physician Portal

Request



Complete Test Requisition form, ensuring that the patient's address is current

Submit



Submit completed Test Requisition form by the following methods:

- Preferred: Upload under "Remote Order" within DermTech Physician Portal
- Alternative: Fax to 858-264-2188

Schedule



Schedule follow up appointment to walk patient through collection. Test kits will arrive 3 days post-order*

Deliver



DermTech contacts patient confirming receipt of test kit

*Approximately 3 days subject to overnight service commitments

FOLLOW-UP: SUPERVISE SAMPLE COLLECTION



- To ensure accuracy, the patient should be supervised by a health care provider when performing sample collection and labeling the sample collector
- Each sample collection kit comes with a pre-labeled FedEx or UPS envelope for return of the sample(s) back to DermTech

Collect



Physician or staff uses teledermatology to walk the patient through sample collection of pre-determined lesion(s)

Package



Once collection is finished, the patient completes sample collector label and prepares shipment

Ship



The patient ships sample via option provided by DermTech Customer Service

- Option 1: Drop in FedEx drop box
- Option 2: Schedule UPS pick-up

TESTING: DELIVER RESULTS TO PATIENT



- Consistent with any in-person collection process, the returned sample will be analyzed by DermTech and results sent for communication back to your patient

Analyze



Upon receipt, DermTech will run test on sample(s)

Report



Test results will be sent via the DermTech Physician Portal or faxed

Present



Physician shares results with patient along with summary of next steps

ADDITIONAL RESOURCES



DERMTECH PLA REMOTE COLLECTION KIT

The DermTech PLA kit provides your patients with everything they need to confidently complete sample collection and securely return samples to DermTech for analysis.

Adhesive Skin Sample Collectors



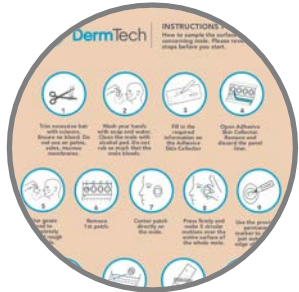
- (2) sample collectors; 1 for official sample collection and 1 extra for practice or back-up
- Patient completes the front label of the **skin sample collector used on the suspicious lesion**, which is the **only item** the patient needs to return

Sampling Prep Supplies



- Alcohol pad
- Gauze

Instructional Material



- Detailed instructions for use describing each step from prep and collection through to the shipment of sample(s) back to DermTech
- Simplified instructional infographic

Shipping Label



- Pre-labeled FedEx or UPS label

KEY CONTACT INFORMATION

For general queries, including access to the DermTech Physician Portal, please contact Customer Service or your DermTech Sales Manager.



Email: operations@dermtech.com

Phone: (866) 450-4223



THANK YOU