

ENERGY ALLIANCES

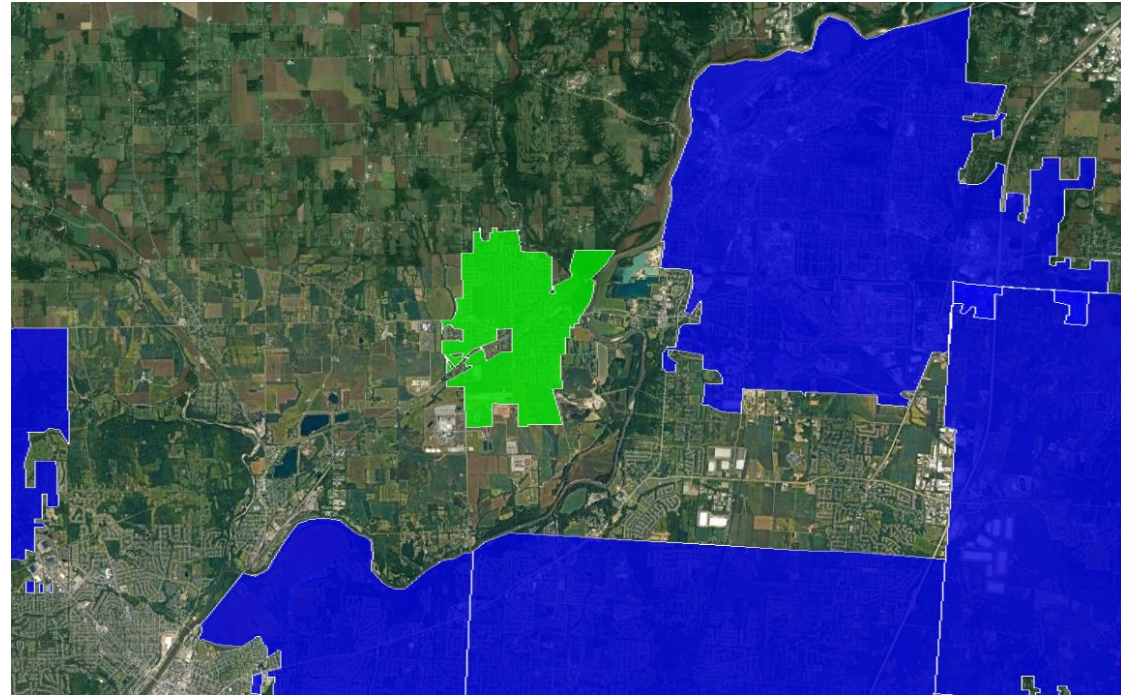
**OHIO'S MOST TRUSTED
ENERGY ADVISER.**



City of Trenton
Energy Aggregation
February 16, 2023



City of Trenton - Neighboring Partners



Energy Alliances Communities

Anderson Township

Batavia Township

Beavercreek, City of

Blanchester, Village of

Clearcreek Township

Colerain Township

Crosby Township

Deer Park, City of

Delaware, City of

Delhi Township

Evendale, Village of

Fairfield Township (Butler)

Forest Park, City of

Golf Manor, Village of

Green Township

Hanover Township

Harrison, City of

Huber Heights, City of

Liberty Township

Lockland, Village of

Miami Township (Hamilton)

Miami Township (Clermont)

Middletown, City of

Moscow, Village of

Newtown, Village of

North Bend, Village of

Norwood, City of

Reading, City of

Ross Township

Springfield Township

Sycamore Township

Symmes Township

Turtlecreek Township

Union Township

West Chester Township

Whitewater Township

Williamsburg, Village of

Worthington, City of

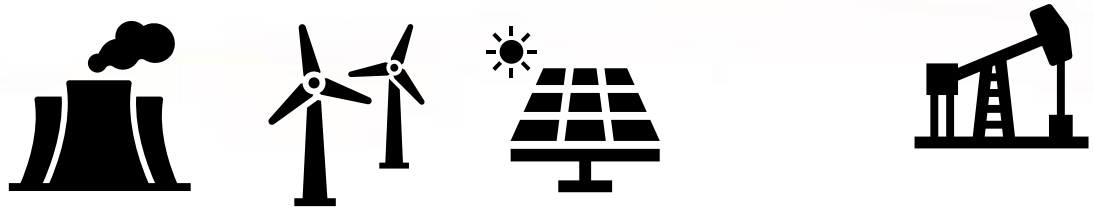
Wyoming, City of



Retail Energy Overview

Generators / Suppliers or Producers

Generate / Produce Energy



Local Utility

Distribute Energy



End Users

Consume Energy



Aggregation Overview

- **What is a Municipal Aggregation Program?**

A Municipal Aggregation allows communities to form a buying group on behalf of their citizens with the intent that a larger buying group may acquire better pricing and more favorable terms and conditions for the citizens than if they shop on their own.

- **Who Governs a Municipal Aggregation Program?**

The Public Utilities Commission of Ohio (PUCO) has developed strict guidelines for forming and running a Municipal Aggregation Program.

- **Who Can Create a Municipal Aggregation Program?**

Townships, Villages, Cities and Counties.

- **Over 400 Electric and 250 Natural Gas Certified Aggregators**



What Changes, Or Does Not Change?

- Duke Energy will continue to deliver electricity and natural gas
 - Manage Power / Natural Gas Outages
 - Handle Billing Questions
- Residents will continue to receive one bill from Duke with only one section of the bill changing to reflect the new supplier charges.
- Budget billing still available through Duke Energy

Who is NOT Eligible?

These Residents would NOT receive an opt-out letter...

- Those currently with another alternate supplier
- Those enrolled in the Percentage of Income Payment Plan (PIPP)
- Those that have previously opted out of the program

Energy Aggregation IS...

- Value add to Residents
- Simplifies Choice
 - Only 25% of electric accounts in community chose to shop on their own
- Option for residents to choose
- Price certainty vs. utility rates on fixed priced programs

Energy Aggregation IS NOT...

- Mandatory
 - Residents can opt out of program at no cost
- Always best option for all residents
 - Residents should understand price and terms and conditions
- Always better than future market offers
 - Should be very competitive at start of program

Aggregations: Beyond Price...

- Aggregation is about the entire value of the program
 - Gives residents a simpler energy solution including...
 - Price
 - Terms and Conditions
 - No Termination Fees
 - Enter or Leave the Program at anytime at no cost
 - Ability to provide additional Renewable Energy
- As market conditions and utility rates are always changing, aggregation brings price protection and stability to the residents

Why Energy Alliances?

Energy Alliances is a full-service consultant. Below are some of the services you will receive...

- Customer Service via Phone, Email and Chat!
- Ballot Issue Awareness
- Drafting/Submitting PUCO certification materials
- Administer RFP process for receiving aggregation bids
- Work with suppliers on..
 - Opt-Out materials
 - Reporting (i.e. enrollments / drops, customer inquiries)
 - Customer service related issues
- Quarterly Performance Reports



Sample Performance Report



Electric Aggregation Performance Report Summary

Liberty Township (Butler County), Ohio



Bill Month	Number of Accounts	Total Volume (kWh)	Aggregation Price (\$/kWh)	Average "Price to Compare" (\$/kWh)	Total Aggregation Cost (\$)	Total Utility Cost (\$) *	Total Performance (\$)	Total Performance (%)	Avg. Performance Per Account (\$)	% of Accounts w/ Positive Performance
Aug-2020	8,500	14,553,112	\$0.0477	\$0.0544	\$694,211.13	\$792,202.57	\$97,991.43	12.4%	\$11.53	99%
Sep-2020	8,276	12,442,874	\$0.0477	\$0.0544	\$593,548.60	\$677,367.43	\$83,818.83	12.4%	\$10.13	100%
Oct-2020	8,149	9,363,176	\$0.0477	\$0.0475	\$446,641.70	\$444,632.37	-\$2,009.34	-0.5%	-\$0.25	72%
Nov-2020	8,000	7,065,176	\$0.0477	\$0.0496	\$337,023.59	\$350,202.47	\$13,178.88	3.8%	\$1.65	86%
Dec-2020	7,908	8,763,414	\$0.0477	\$0.0477	\$418,034.11	\$418,278.94	\$244.83	0.1%	\$0.03	75%
Jan-2021	7,796	10,359,121	\$0.0477	\$0.0466	\$494,150.25	\$483,148.81	-\$11,001.45	-2.3%	-\$1.41	69%
Feb-2021	7,730	9,082,973	\$0.0477	\$0.0473	\$433,275.64	\$429,758.99	-\$3,516.66	-0.8%	-\$0.45	78%
Mar-2021	7,649	8,506,951	\$0.0477	\$0.0478	\$405,798.10	\$406,445.89	\$647.78	0.2%	\$0.08	79%
Apr-2021	7,568	6,955,963	\$0.0477	\$0.0502	\$331,815.78	\$349,370.02	\$17,554.24	5.0%	\$2.32	87%
May-2021	7,485	6,592,978	\$0.0477	\$0.0506	\$314,502.52	\$333,604.48	\$19,101.96	5.7%	\$2.55	89%
Jun-2021	7,392	8,746,337	\$0.0477	\$0.0542	\$417,223.34	\$474,182.83	\$56,959.49	12.0%	\$7.71	100%
Jul-2021	7,308	11,470,408	\$0.0477	\$0.0552	\$547,169.32	\$632,691.15	\$85,521.83	13.5%	\$11.70	99%
Aug-2021	7,224	11,264,815	\$0.0477	\$0.0552	\$537,358.34	\$621,297.47	\$83,939.14	13.5%	\$11.62	99%
Sep-2021	7,155	11,890,641	\$0.0477	\$0.0551	\$567,214.10	\$655,690.52	\$88,476.42	13.5%	\$12.37	99%
Oct-2021	7,101	8,956,515	\$0.0477	\$0.0494	\$427,248.23	\$442,303.88	\$15,055.65	3.4%	\$2.12	79%
Nov-2021	7,035	6,713,229	\$0.0477	\$0.0520	\$320,237.58	\$349,250.42	\$29,012.84	8.3%	\$4.12	91%
Dec-2021	6,968	7,551,794	\$0.0477	\$0.0506	\$360,239.01	\$381,761.10	\$21,522.09	5.6%	\$3.09	85%
Jan-2022	6,895	8,610,745	\$0.0477	\$0.0494	\$410,753.98	\$425,098.10	\$14,344.12	3.4%	\$2.08	79%
Feb-2022	6,847	8,206,331	\$0.0477	\$0.0491	\$391,460.58	\$402,582.09	\$11,121.51	2.8%	\$1.62	83%
Mar-2022	6,652	6,758,116	\$0.0477	\$0.0505	\$322,379.63	\$341,078.93	\$18,699.30	5.5%	\$2.81	87%
Apr-2022	6,651	6,162,823	\$0.0477	\$0.0501	\$293,984.27	\$308,993.00	\$15,008.73	4.9%	\$2.26	87%
May-2022	6,633	5,835,269	\$0.0477	\$0.0508	\$278,361.69	\$296,166.90	\$17,805.20	6.0%	\$2.68	90%
Jun-2022	6,587	8,406,384	\$0.0477	\$0.0628	\$401,016.16	\$528,146.04	\$127,129.88	24.1%	\$19.30	100%
Jul-2022	6,542	10,847,297	\$0.0477	\$0.0635	\$517,453.25	\$689,036.01	\$171,582.76	24.9%	\$26.23	99%
Aug-2022	6,480	10,527,366	\$0.0477	\$0.0635	\$502,189.73	\$668,645.94	\$166,456.21	24.9%	\$25.69	100%
Sep-2022	6,420	9,934,221	\$0.0477	\$0.0635	\$473,893.76	\$630,849.50	\$156,955.74	24.9%	\$24.45	100%
Total	7,267	235,568,029	\$0.0477	\$0.0532	\$11,237,184.42	\$12,532,785.84	\$1,295,601.42	10.3%	\$178.28	

* "Total Utility Cost (\$)" represent what those in the aggregation would have paid if they stayed with Duke's Standard Service Offer

Notes: Participating residents and small businesses have saved almost a combined \$1,300,000 since the electric aggregation program started which offers 10% savings compared to Duke's standard service offer rates. We expect significant savings to remain in place through the end of this aggregation term with Duke's default rates above 6.3¢ per kWh.



Sample Website



WELCOME

LIBERTY TOWNSHIP (BUTLER CO)

Community Aggregation Rates

Commodity	Price	Renewable Energy	End Date	Supplier	Phone Number
Electric	\$0.0477 per kWh	No	July 2023	Constellation	833-579-1087
Electric	\$0.0487 per kWh	Yes	July 2023	Constellation	833-579-1087
Natural Gas	\$0.839 per ccf	No	October 2024	AEP Energy	888-659-3888

*Click on the commodity name to read Frequently Asked Questions (FAQ)

NATURAL GAS AGGREGATION UPDATE

***NOTE - Make sure to compare the aggregation rate to Duke's Gas Cost Recovery (GCR) rate and NOT the Delivery/Distribution rate. The GCR is listed on your Duke bill. ***

The natural gas program starts this fall at a rate of \$0.839 / ccf through your October 2024 meter-reading-date with AEP Energy as the new supplier. There are no termination fees to leave this program at any time!

Only those on Duke's Gas Cost Recovery Rate (GCR) would have received the opt-out materials. If you are currently shopping with an alternate natural gas supplier, you are not considered eligible due to current Ohio laws and would not receive a letter. You can choose to opt-in to the program, but we strongly suggest that you speak with your current supplier to make sure you understand your contract terms and if you have any termination fees before making any changes.

<https://energyalliances.com/liberty-township>



Final Thoughts

- Get certified!
 - Communities aren't "required" to offer program
 - Will be able to act quickly if market opportunity presents itself
- Reminder: Community controls the program
- Don't chase price alone
 - Commodity market always changing
 - Look for best value at start of program

Draft Timeline for Aggregation Program

- Submit aggregation issue(s) for ballot.
- Election Day
- 30 Days Post Election: Develop Plan of Operation and Governance(s)
- 60 – 90 Days Post Election:
 - Holds 2 public hearings (per commodity) to discuss/revise the Plan
 - Community Adopts the Plan of Operation and Governance
 - Aggregation application submitted to PUCO (30-day approval period)
- 3 – 4 Months Post Election: - Energy Alliances obtains bids & recommends a supplier
- 4 – 5 Months Post Election:
 - The supplier notifies eligible residents about the program and gives them 21 days to decide if they want to participate
 - At the end of the 21-day notification period, supplier submits enrollments, and the program goes into effect