



2022
COMMUNITY
IMPACT
REPORT



"A generous man will prosper. He who refreshes others will himself, be refreshed"
Proverbs 11:25

A Message From Our Founding CEO

CHARLES L. BENDER III



Dear World Changer,

This year has been another exciting time for Place of Hope as we celebrate all that we have been able to accomplish together with you. We continue to see God's hand over our combined efforts and are blessed to see God open more doors to reach those in desperate need of hope and healing. We are so grateful for you and our generous community, for joining this critical mission of helping the fatherless, the widows, and the destitute. This is evident in the two campuses that were donated to Place of Hope just this year, KidSanctuary Campus and our Stuart Campus, as well as the exponential growth of our Shade Tree Family Outreach Program expanding our reach regionally into the lives of so many who need our collective support.

From arrival into a safe home with dignity, graduation to birthdays, family summer vacations and community engagements to family dinners, 2022 was a special year for thousands of children, youth, and families blessed by you and Place of Hope. Our mission and efforts are essential for those in our region who need a hand up. On behalf of them and our entire team, I would like to thank you for making hope a reality for the thousands who have walked through our doors in 2022. You are making a profound difference and changing life trajectories all throughout our region and we could not be more grateful. Onward together!

Blessings,

A handwritten signature in blue ink, appearing to read "Charles", enclosed within a faint, light blue circular outline.

Founding CEO





Place of Hope is a faith-based, state-licensed children and families organization, offering housing and support services designed to end the cycles of abuse, neglect, homelessness, poverty, and human trafficking. We are one of the largest, comprehensive, and most diverse children and families organizations in Palm Beach County and the Treasure Coast. We strive daily to help our children, youth, and families find true healing and restoration, which leads to healthy, independent, and successful lives.



◦ ◦ ◦ ◦ Our Mission ◦ ◦ ◦ ◦

Place of Hope provides a stable and loving environment for children, youth, and families who are hurting. We are committed to meeting desperate needs in our community by sharing God's love and placing hope in their lives- *one life at a time.*

◡ Our Vision ◡

We strive to equip our children, youth, and families with the tools they need to succeed. We aim to educate and enrich the lives of those in our care, encourage them to reach their full potential, create a positive environment for healing, and foster hope for the future.

◦ ◦ ◦ ◦ Our Purpose ◦ ◦ ◦ ◦

We offer a full continuum of care for those in need with programs and services specializing in family outreach and intervention, maternity care, safety for survivors of human trafficking, affordable transitional housing and supportive services for young adults, housing and support for homeless families, neighborhood foster care, and hope and healing opportunities for children, youth, and families throughout our region. Additionally, through our social enterprises, we are addressing critical social problems and basic unmet needs through innovation as net revenues directly support those we serve.



Our Services

**PLACE OF HOPE SERVICES RANKED
#1 IN THE NATION BY CHARITY NAVIGATOR**

Neighborhood Foster Care

Place of Hope's Paxson Campus, KidSanctuary Campus, and Stuart Campus locations provide faith-based family-style Neighborhood Foster Care in our unique family cottages, with placement priority given to large sibling groups and other special needs ("hard to place") children in foster care in need of consistent, structured, family-based care (as long as needed). These family cottages are located within unique, safe, and serene residential neighborhoods. Although individual circumstances and the courts determine the precise length of stay for each child, we strive to provide a stable and loving family home for children until they either attain permanency (family reunification or adoption) or are of age to live independently (age out). Our proven, effective model employs professionally trained live-in Foster (Cottage) Parents caring for no more than six children in each family cottage. Our cottage parents devote their full time, talents, and energies to the children, creating a stable and structured traditional family setting. This promotes everyday skills and social development, preparing children for life's challenges and healthy independence.

Because children in foster care often experience multiple placement disruptions, we strive to meet their critical needs by providing structure, stability, consistency, enrichment, and growth opportunities. While many siblings in foster care are forced to live apart, we are committed to reunifying brothers and sisters and maintaining crucial family relationships.

Emergency Placement

Seven Stars Cottage is Palm Beach County's first family-style emergency placement and assessment center for abused and neglected children. We provide short-term emergency care and support services for up to eight boys (ages 10 to 17) who have been removed from their homes. Our Seven Stars Cottage provides counseling, professional case management, therapy, and comprehensive support services. We ensure the safety and well-being of those in our care while providing consistent residential care, supervision, healthy influences, and services that strive to meet each child's physical, emotional, social, spiritual and educational needs.





Transitional Independent Living and Supportive Housing:

Villages of Hope

Villages of Hope is a program providing independent living, residential support, and essential life-skills development services for emancipated foster youth, other homeless youth, single moms with kids, and trafficking survivors.

We provide a supportive, proactive living, and learning environment for our residents. This program ensures their well-being by meeting their primary need for housing and offers resources to help youth live with dignity, independence, and stability. We provide proactive living and learning environments to include life-skills training and development opportunities creating a healthy transition into adulthood.

Joann’s Cottage

Joann’s Cottage is a family-style maternity home for girls providing comprehensive care for young mothers and young mothers-to-be. The maternity home operates at a secured location in a traditional family neighborhood, welcoming girls into a safe, healthy, and productive environment 24 hours a day/seven days a week. Joann’s Cottage provides professional case management, independent living services, parenting classes, access to quality, comprehensive medical care, and comprehensive support services to ensure the safety and well-being of the mothers and mothers-to-be. In addition, the program offers consistent residential care, supervision, and healthy influences that strive to meet each girl’s physical, emotional, social, spiritual, and educational needs.

Hearts for Moms

Place of Hope and Hearts for Moms are working together, providing resources and innovative programs to enrich and empower single moms and their children in their transition to healthy independence.

Together we help stabilize families with safe, affordable, transitional housing and provide enhanced services that help catapult them from surviving to thriving and eventually leadership in our community.

**Education, Enrichment, Health & Wellness
Education and Enrichment**

Each of our locations has a dedicated Education and Enrichment Center. Our team is surrounded by community engagement investing resources. Our essential care includes mentoring, tutoring and professional services. A wide range of community and campus activities give our children and young adults atmospheres to heal, discover new interests, grow in skills, and build relationships. Each month includes life skill education, and our new Excel Leadership Institute brings professional and personal development classes. Multiple Leadership and Career Days invite youth to envision their futures, learn about many fields, and network. Scholarship resources and the hard work of our youth carry dreams into successful adulthoods.

As youths come into care, they are welcomed with blessing bags and baskets. Birthdays, homecomings, graduations, and holidays are celebrated. Our children participate in family vacations, summer and mission camps, school trips, and service projects. They make lasting memories and build futures with dedicated cottage parents, team members, and community involvement.

Health and Wellness

The children, young adults, and families in our care have access to fully equipped gyms, multipurpose studios, basketball courts, playgrounds, and a personal trainer. Cooking, nutrition, self-care, and emotional health are included in life skill trainings. We provide physical fitness classes and fun activities to encourage our kids to develop and maintain lifelong healthy habits.

**Child Abuse Prevention & Family Strengthening
Shade Tree Family Outreach**

Through our Shade Tree Family Outreach Program, we are providing family outreach and intervention programs, family strengthening initiatives, and critical services to families and children who are navigating the child welfare system. All programs and services offered through Shade Tree Family Outreach are aimed at supporting and blessing children and families dealing with the dependency/child welfare and foster care systems, meeting emergency and family preservation needs, and expanding the ministry reach of Place of Hope. Shade Tree Family Outreach also promotes child abuse and neglect prevention and awareness, and child advocacy, both domestically and internationally.

Human Trafficking Prevention, Education & Recovery

Throughout our various locations and programs, recovery services are provided for victims and survivors. These services include professional case management, quality medical care, counseling, therapy, tutoring, mentoring, life-skills development, hope, and healing opportunities. Place of Hope provides these survivors with the tools they need to overcome their past and create a bright future. We do this while providing consistent residential care, supervision, and healthy influences that strive to meet each of their physical, emotional, social, educational, and spiritual needs.

To put an end to this inexcusable crime, Place of Hope released a free online documentary, INVISIBLE. Additionally, Place of Hope provides educational presentations to aid in the community’s ability to recognize human trafficking and how to safely report it.

Social Enterprise

Our Peninsula Social Enterprises are action-based and apply commercial strategies to maximize improvements in financial and social well-being. We address critical social problems and basic unmet needs through innovation. Net proceeds directly benefit abused and neglected children, homeless youth, families in transition, single moms with children, human trafficking survivors, and our child abuse and human trafficking prevention efforts.





Our Programs

NORTH REGION

Place of Hope Paxson Campus

Est 2001

Provides neighborhood residential family-style foster care for children and youth, focusing on placement consistency, dignity, and keeping sibling groups together.

Donna's Place at The Villages

Est 2006

Offers family-style supportive housing for homeless youth, pregnant and parenting mothers, human trafficking survivors, and young adults who have aged out of foster care.

Seven Stars Cottage

Est 2006

Family-style emergency placement and assessment center providing short-term emergency care and support services for up to eight boys daily (ages 10 to 17).

Joann's Cottage

Est 2011

Family-style maternity home providing parental training and support for young mothers and mothers-to-be.

Hope House Aftercare Services

Est 2012

A supportive community action team of trained professionals and vetted community mentors who offer supportive guidance and services to vulnerable teen/adult trafficking survivors.

Sam & Connie Frankino KidSanctuary Campus

Est 2012

Provides neighborhood residential family-style foster care for children and youth, focusing on placement consistency, dignity, and keeping sibling groups together.

Treasures for Hope

Est 2013

A social enterprise that employs and trains our young adults residing at Donna's Place at the Villages and provides financial and material support to Villages of Hope.

Honda Classic Cottage

Est 2014

Supports youth in extended foster care by providing life skills and guidance to healthy independence.

Gray Fitness Center

Est 2017

Gives Place of Hope children and youth access to exercise and fitness equipment and training with opportunities for the fitness community to volunteer to teach nutrition and healthy habits to our youth.

Human Trafficking Prevention and Education Model

Est 2018

Provides human trafficking awareness, prevention, and education for the community, as well as educates and equips our staff and young people about the risks and dangers of human trafficking.

Berlin Family Foundation Education and Enrichment Center

Est 2018

This is the cornerstone of our expanding enrichment programs. The programs offered include tutoring and life-skills training which are vital to our kids' and families' success.



The Lane Center and Gray Family Peninsula Social Enterprises

Est 2020

An action-based social enterprise offering high quality, unique work and social space for tenants and licensees. Rental revenues from our 18,000 sq. ft. development directly benefit abused and neglected children, homeless youth and families in transition, human trafficking survivors, single moms with kids, and child abuse and human trafficking prevention efforts.

Harris L. Weinstein Outreach Center

Est 2021

An action-based social enterprise offering high quality, unique work and social space for tenants and licensees. Rental revenues from our 5,000 sq. ft. development directly benefit abused and neglected children, homeless youth and families in transition, human trafficking survivors, single moms with kids and child abuse and human trafficking prevention efforts.

Shade Tree Family Outreach

Est 2021

Providing family outreach and intervention programs, family strengthening initiatives, and critical services to families and children who are navigating the child welfare system with the goal of supporting and blessing children and families dealing with the dependency/child welfare and foster care systems; meeting emergency and family preservation needs; expanding the ministry reach of Place of Hope domestically and internationally; and promoting child abuse and neglect prevention, awareness, and child advocacy.

Place of Hope Treasure Coast Stuart Campus

Est 2022

Provides neighborhood residential family-style foster care for children and youth, focusing on placement consistency and keeping sibling groups together; supportive housing for homeless youth, single mothers, human trafficking survivors, and young adults who have aged out of foster care; family outreach and intervention programs, family strengthening initiatives and critical services to families and children who are navigating the child welfare system. This campus is the regional headquarters for the Shade Tree Family Outreach Program.

Bender Family Village (made possible by John and Bobbi Erbey)

Est 2022

A four-unit village, each outfitted with (8) two-bedroom cottages providing transitional housing and support services for young adults in our Villages of Hope program (former foster youth, homeless youth, single moms with kids, and trafficking survivors).

Erbey Family Transitional Housing Complex

Est 2022

One of the four transitional housing complexes outfitted with (8) two-bedroom cottages within the Bender Family Village.

Chuck and Diane Hanlon Cottage

Est 2022

One of the cottages within the Erbey Family Housing Complex serving our Villages of Hope residents.

The Berlin Family Foundation "Mommy & Me" Transitional Housing Cottages

Est 2022

A two-unit duplex that provides transitional housing, case management with wrap-around supportive services, for single moms with kids.

The Boswell Family Education and Enrichment Academy

Est 2022

This is the cornerstone of expanding enrichment programs. The programs offered include tutoring and life-skills training which are vital to our kids' and families' success.

Marshall E. Rinker, Sr. Foundation Neighborhood Foster Care Family Cottage

Est 2022

Provides neighborhood residential family-style foster care for children and youth, focusing on placement consistency, dignity, and keeping sibling groups together.



SOUTH REGION

Place of Hope at The Leighan and David Rinker Campus

Est 2013

Provides independent living and support for "aged-out" and otherwise homeless youth, as well as single mothers with children.

James and Claudine Kirkwood Administration, Program and Outreach Center

Est 2013

Provides space for small corporate outreach events and administrative needs. In addition, this space serves as a meeting place for our volunteer groups and staff meetings.

Alumni Impact Extended Foster Care Girls Cottage

Est 2015

Provides transitional housing and support services for young women aging out of foster care and otherwise homeless young adults.

Jeannine and Leland Morris Art, Education and Wellness Center

Est 2016

This is the cornerstone of our expanding enrichment programs. The programs offered include tutoring and life-skills training which are vital to our kids' and families' success.

Human Trafficking Prevention and Education Model

Est 2018

Provides human trafficking awareness, prevention, and education for the community, as well as educates and equips our staff and young people on the risks and dangers of human trafficking.

Kelly Woods Fleming Extended Foster Care Boys Cottage

Est 2018

Provides transitional housing and support for young men aging out of foster care and otherwise homeless young adults.

Leighan Roberts Rinker Family Cottage for Girls

Est 2018

Provides transitional housing and support services for young mothers aging out of foster care and otherwise homeless single mothers.

Marshall and Vera Lea Rinker Village

Est 2018

A four-unit complex, each outfitted with (8) two bedroom apartments serving our Villages of Hope residents. The village is a primary expansion site for Place of Hope.

The Lane Education and Enrichment Center


Est 2019

This is the cornerstone of our expanding enrichment programs. The programs offered include tutoring and life-skills training which are vital to our kids' and families' success.

Gary Peters Family Transitional Housing Complex

Est 2020

Provides transitional housing and support services for young adults who have aged out of foster care or who would otherwise be homeless, as well as single mothers.






 **200+**
Happy and healthy babies
and their mothers served
through Joann's Cottage

365+ 
Aged-out or homeless youth and
families found a place to call home
through Villages of Hope

 **30,000+**
children, youth and
families served

373+ 
forever families found
for foster children
through adoption

634+ 
siblings kept together

 **8,306**
Children, youth and
families cared for

21,971
Community members trained
to recognize the signs of
human trafficking

50
Single moms with
children and babies
cared for

129
Children, youth, and
families cared for daily
residentially





Allen's Story of Hope

Allen grew up in a kind and humble family who taught him a good work ethic, and that nothing comes to those who do not strive for excellence. Working hard and playing football, Allen was a bright student with a bright future ahead of him. Seemingly overnight during the pandemic after his family suffered several devastating life events, he became homeless.

"Though these recent years have been far from easy as I have experienced many trials and setbacks, my late grandmother taught me to never waste my pain; to dig through and keep pushing forward," Allen recounts.

A stellar student-athlete with accolades both on and off the field, he had high hopes after graduating high school and entering the FAU Engineering program. Shortly after starting college, he lost his grandmother whom he credits for raising him. He pushed through and focused on football until an injury ended his football career. Allen knew he needed to prioritize his education if he was to have success. So, he hit the books hard focusing on his future as an engineer.

Then the pandemic hit. Hard. Allen shares, "I lost eight family members due to health complications. Then the dorms closed. Instantly, I became homeless. Without a place to live, without any family, without any stability, I could not focus on school, only surviving." Just like that, Allen lost his family, his housing, and his scholarship.

A mentor saw all the challenges Allen was facing and knew about Place of Hope. He suggested Allen apply for Villages of Hope, a program for youth who were aging out of foster care

or were otherwise homeless. Villages of Hope offered Allen housing, life skills development, stability, guidance, and a light at the end of a dark tunnel.

"With the help of a supportive staff at Place of Hope, I was able to navigate the challenges I had been experiencing and began to make progress on going back to school to finish my degree in Mechanical Engineering. It was through Place of Hope that I was introduced to Moss Construction. I learned of the opportunities the company afforded young people like myself. I was inspired to apply for a summer internship working on a solar project. I was thrilled to receive an offer! I have been introduced to some terrific leaders within their organization, and it has helped me realize my potential is far greater than I imagined. I also learned to not be afraid to reach for new goals and dreams. My work this summer has fueled my desire to get back to school and work hard to complete my degree, I have a new confidence that I can be a successful student again."

The comfort and security of having a Place of Hope in his corner to walk beside him, support and guide him in his efforts is a great relief says Allen, "they have become like family." He is now enrolled at FIU and determined to be the first in his family to graduate college!

"I want to create generational wealth and have a family that has love and kindness between us one day." concluded Allen

began to feel loved



With Open Arms

Tasha arrived at Joann's Cottage as a young pregnant teen, not even old enough to drive. Her road to Place of Hope was paved with a history of unspeakable abuse and exploitation. Forced into a life outside of her control, she experienced more trauma and violence than any one person should in a lifetime, let alone at such a young age.

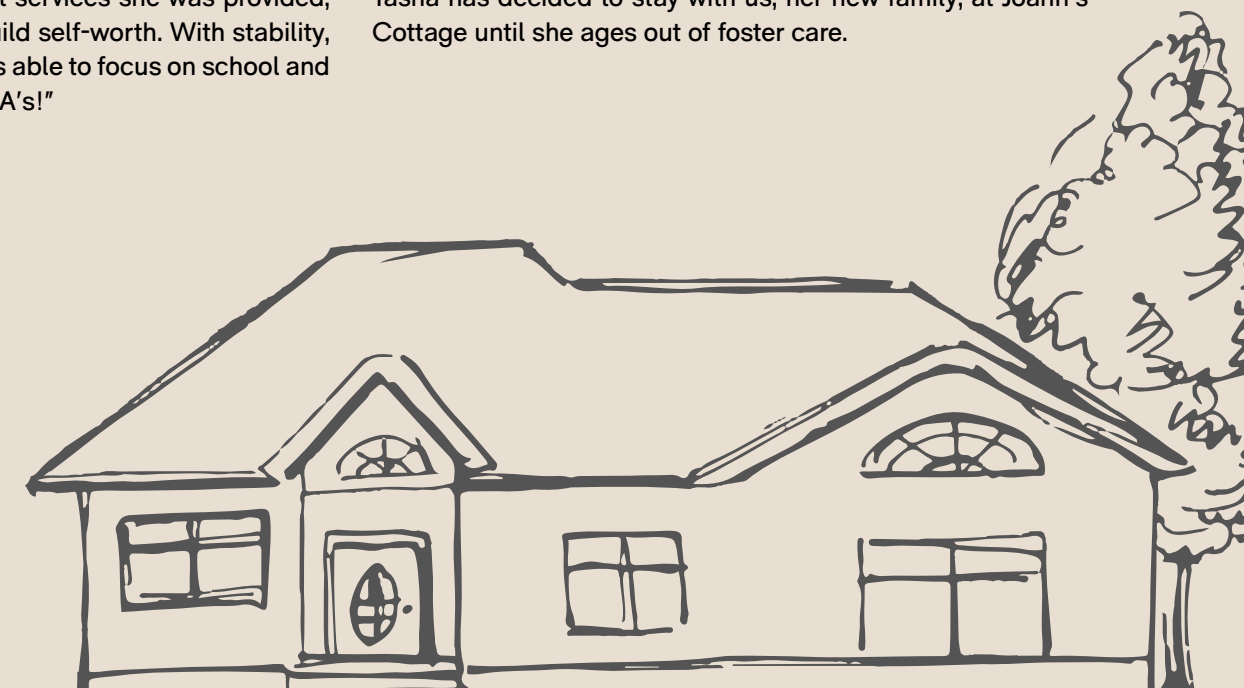
When the only relative whom she held close died, Tasha became suicidal and was baker acted. A few months into her pregnancy, she was welcomed with open arms at Joann's Cottage.

She came in withdrawn and untrusting. After some time, she began to realize Joann's Cottage was a place of safety, and stability and the staff was there to protect and nurture her. Through professional case management, independent living services, parenting classes, access to quality medical care, and comprehensive support services she was provided, Tasha began to feel loved and build self-worth. With stability, guidance, and support, Tasha was able to focus on school and brought up her failing grades to "A's!"

Tasha, about to be a mom, never celebrated a birthday in her life. The team at Joann's changed that too! They threw her a great party and showered her with love and genuine affection. She was overjoyed. Tasha has been so impacted by the transformation in her life through Joann's Cottage, that she recently toured some colleges and plans to study for a career in the medical field and plans to give back to others in need.

Praise God, this young teen mom gave birth to a healthy baby. At Joann's Cottage, Tasha is learning to be a nurturing mother and is on the road to providing a great life for her baby. Kicking off that great life, she began planning the baby's first birthday six months in advance! Again, the team at Joann's rallied and helped throw her little the best first birthday. What a sweet memory for her to have, celebrating her own first birthday along with her child's first birthday.

Tasha has decided to stay with us, her new family, at Joann's Cottage until she ages out of foster care.





Pursuing Greatness Through Trials

Before Anastasia came to Place of Hope at 13 years old, she had changed schools six times by the 7th grade. Her disruptions were the pathway to developing the young lady she is today. God-given, she is strong-willed, intuitive, and driven. At just 14 years old, during a court hearing, she pleaded with the judge to consider changing her case plan from reunification to another option, APPLA (another planned permanent living arrangement). Though highly unlikely, this young lady presented such a strong argument to ensure the judge granted her request.

Anastasia shares that Place of Hope has provided her stability, safety, and structure so she can focus on her education. During her time with her cottage parents on our campus, she

has gained confidence being surrounded by people speaking to her, mentoring her, and being godly role models. Her faith has also been strengthened, and she asked to be baptized.

With her natural intelligence, coupled with her wit, determination, and intuition she has decided to use her personal testimony and experience as an attorney to advocate for children like her who are in the foster care system. Recently, she was accepted into a private school and into their pre-law program! To be accepted she had to submit an essay, participate in an interview process, and apply for a pre-law scholarship!

Will Clervil Tiano

MAY BE A FAMILIAR FACE.

Over the last eight years, Will's journey has been an inspiring story of dedication, hard work and triumph. We first met Will when he and his younger brother were removed from their mother's care due to her inability to properly care for the boys. They were living in abandoned houses, abandoned cars, and anywhere else they could find shelter for a night. Will recalls praying to God along with his younger brother asking for help. What happened next is nothing short of a miracle.

CBS 12 Forever Family with
Liz Quirantes

Place of Hope and CBS 12
teamed up this year to shine
a light on the incredible
families who have journeyed
to adoption. Throughout
2022 CBS 12 and Place of
Hope highlighted forever
families created through
adoption and their stories.



When the boys were brought to Place of Hope, we were able to keep them together on the Paxson Campus because the unique family-style foster care often allows siblings to stay together. Both boys had untapped natural talents and athleticism, Will in football, and his brother in track. Through the generosity of our donors, Will enrolled at Jupiter Christian School, graduating with honors in 2015 and earning a football scholarship to Southeastern University. Through Place of Hope, Will met his mentor, Sal Tiano, and the Tiano family, who later would become his forever family through adoption.

While earning his degree in Psychology and Social Work, Will came back to Place of Hope, every summer, to work as a relief parent and support parent mentoring of other boys, often sharing his own personal stories.

Armed with a master's degree in Social Work and Psychology, the football athlete graduated from Southeastern University, in 2020, and accepted a position with the Department of Children and families, in Pinellas County, as a caseworker. "Out of all the foster homes and foster parents I visited in my two years, none of them were like Place of Hope. They did not provide the same opportunities I had, as a foster child, at Place of Hope," concluded Will.

In March 2022 Will married his wife Erin, whom he met at SEU and works as Place of Hope's Enrichment Volunteer Specialist. Currently, Will is a full-time Support Specialist and Therapist working with aged-out foster youth and otherwise homeless youth, in Villages of Hope, a Place of Hope sister entity.

As an ambassador for so many of our incredible youth who have and will continue to shatter the statistics placed on them, Will always reminds people that while the challenges seemed insurmountable, "Those who say they can and cannot are both right."

Place of Hope and its community are proud of all Will's accomplishments and we are honored to have him on our team!





Human Trafficking Survivor

HIGH SCHOOL GRADUATE. ENTREPRENEUR.

Trusting a family member, Leo, the oldest of three siblings, migrated from Guatemala, believing they would be cared for and could attend school. Instead, the siblings were forced into labor trafficking in Palm Beach County. The children feared for their lives for several years until they were rescued and brought to Place of Hope in 2016. In school, while working through their traumas and learning a new language, new culture, and a new way of life, Leo and his sister faced challenges from peer pressure and unhealthy outside influences but with the love and support from Place of Hope, they stayed focused on their studies.

As a child in Guatemala, Leo discovered an affinity for cars while visiting his cousin's garage and watching him work on different vehicles. He was happiest when he was allowed to assist with even the smallest task. Leo knew one day he would be a mechanic. During his senior year of high school as he was approaching 18 years old, we planned, with him, his transition to our sister entity, Villages of Hope for aging-out foster youth. The idea of graduating high school and going into a mechanics program was becoming a reality. Surrounded by healthy influences, guidance, and therapy Leo and his sister worked hard and earned their diplomas. The first in their family! In 2021, he and his sister were recipients of our Outstanding Youth of the Year awards.

Following his case plan, Leo moved to our Leighan and David Rinker Campus transitioning to Villages of Hope. He entered the Automotive Services Technology program at Palm Beach State College and earned his certificate, transitioned to full independence, and moved to another state to be with family starting his career.

Leo summed up his time at Place of Hope, "With the support of Place of Hope I've been able to achieve my goals, and they've given me hope for a future. There was a time when I thought it was all over for me, that I would never achieve my objective, that I would never be able to continue a career as a mechanic, but then Place of Hope came into my life, and everything changed."

His sister continues to study Nursing at a local community college through distance learning, and their youngest sibling is still in care with us and is thriving.

Education and Enrichment

We offer our children, youth and families high quality wrap around services and supportive programs to heal, discover, grow and develop. These services and programs can be found throughout our footprint in our Berlin Family Education & Enrichment Center, our Lane Education and Enrichment Center, our Boswell Family Education and Enrichment Academy, and our Angel Crossing Enrichment Center. These programs and services include, but are not limited to the following areas:

- **Essential Care and Services:** Mentoring, tutoring, haircuts, dental services, etc.
- **Community Enrichment Activities:** Swimming lessons, sporting events, etc.
- **Camp, Travel & Clinics:** Summer camp, family vacations, mission camps, soccer clinic, etc.
- **Life & Holiday Celebrations:** Birthdays, adoption, homecoming, prom, Christmas, Easter, Hanukkah, etc.
- **Education, Leadership & Career Development:** Career days, job-site tours, graduation, life skills classes, etc.



Special Birthdays

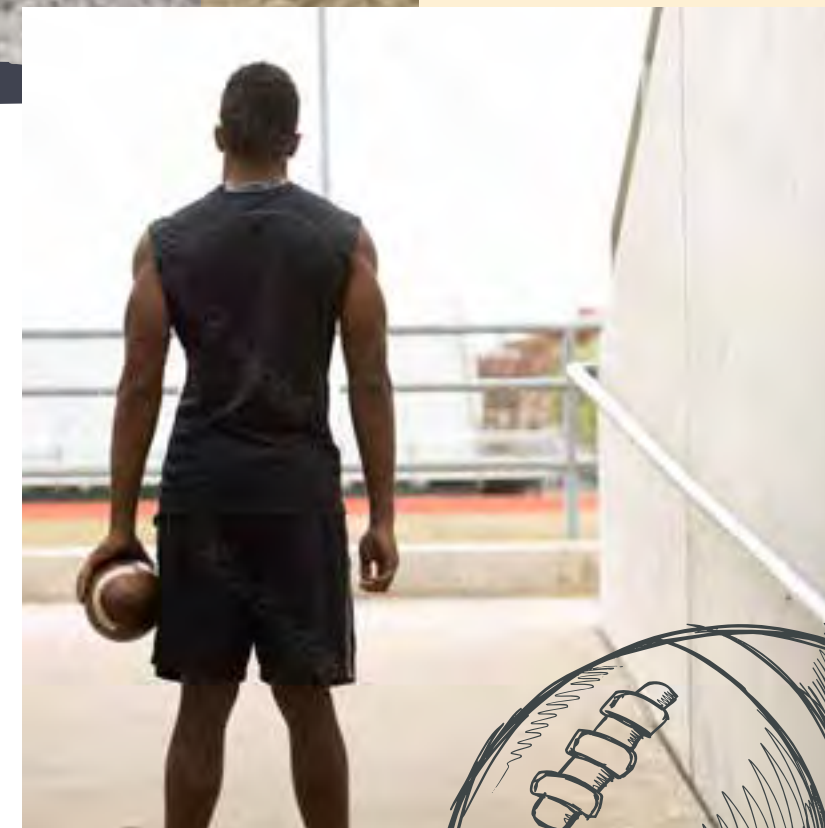
Sweet 16! Anna is kind, loving, smart, and beautiful with a charismatic spirit. You cannot tell she has had a life of sorrow and neglect. During her time at Place of Hope, she made many friends in school and church and was eager to celebrate her very first birthday with her friends! Anna's Sweet 16 was filled with memories to last a lifetime. Befitting her personality, she chose an elegant ball "Victorian Era" themed party complete with a theatrical walk-in entrance arm and arm with her cottage parents!

Joyful Celebration! Sweet Alexis celebrated her 11th birthday at Place of Hope. Like so many children in our care, she had never had a birthday before. Kindhearted and humble, Alexis was excited to celebrate something that her biological parents never cared to celebrate. Knowing this was her first birthday, her cottage parents asked her to dream big. Her eyes lit up describing the things she would like, including a cake and a scooter. Much to her surprise, upon arriving at her birthday party, she saw a beautiful birthday cake, a scooter, and more! Even sweeter was the tears of joy when she saw a room full of friends who came to celebrate her.

Texas Football Camp

Watch out College Game Day and NFL, we have a rising star with fast feet and big dreams! In June one of our youth had the opportunity to meet five college football coaches, tour their schools and participate in their college football training camps.

Upon his return to Florida, he attended a football showcase locally where he was able to perform in front of some college coaches and compete against his peers. His athleticism shined above the others completing a 40-yard dash in 4.8. His times in most of the skill areas beat out the other competitors. Several coaches extended their contact information to keep in touch! We are excited to see him continue to train and grow into an outstanding and gifted young man through our Enrichment program.



The children, young adults, and families in our care have access to fully equipped gyms, multipurpose studios, basketball courts, playgrounds, and personal trainers and coaches. Cooking, nutrition, self-care, and emotional health are included in life skill trainings. We provide physical fitness classes and fun activities to encourage our kids to develop and maintain lifelong healthy habits.

Therapists come on campus and offer to counsel those who need it. Group counseling, community activities, and conversations with former foster youth provide safe spaces to feel common bonds over experiences and continued perseverance in personal growth and healing.



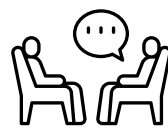
Nutrition & Fitness



The Arts



Camp, Travel & Clinics



Therapies

LEAD Scholarship

Place of Hope's L.E.A.D. scholarship is awarded to high school students who excel in the four areas: leadership, education, attitude, and dedication. This year's L.E.A.D. Scholarship recipient was Faith, a graduate of Palm Beach Gardens High School. Theresa Peak, Director of Villages of Hope, a sister entity of Place of Hope, nominated Faith and explains how she fulfilled these four areas of excellence: **Leadership:** Faith is a team player, empathetic and she has a servant's heart. **Education:** She graduated from Palm Beach Gardens High School and is now enrolled in Palm Beach State College for the summer semester. We are so proud of her, as she was the first to graduate High School in her family! **Attitude:** Faith is strong-minded, determined, and optimistic. **Dedication:** She is outgoing, driven, and committed.

Educational Partnership



THE FRIONE FAMILY
SCHOLARSHIP
FUND



LILLY BEAN FUND

SAM J. FRANKINO
ENDOWMENT



THE KAZMA FAMILY
EDUCATION
ENDOWMENT



John C. Cassidy
CORPORATE CONSULTING, INC.

THE DAISY FUND



THE KING'S ACADEMY



THE CHARLES BENDER
SCHOLARSHIP AWARD



Excel Leadership Institute

This year we launched a concentrated 6-week Excel Leadership Institute to take our youth and young adults to their next level professionally and personally. The Excel Leadership Institute provides a next level for residents ready to take more initiative to equip themselves and further their paths. Each week is maximized by two top community professionals volunteering their time to pour into the lives of this rising generation. Our students learn through teaching and interaction while they build their local network for opportunities. Topics include:

- Entrepreneurial Purpose & Innovation/ Knowing Your Market
- Goal Setting, Motivation & Organization
- Small Business Development, Management & Growth
- Impression, Branding & Marketing
- Personal Financial Management
- Technology & Social Media Management

- Entrepreneurial Budgeting, Financing & Profit
- Communication Skills & Professional Relationships
- Human Resources & Legal Management
- Customer Care, Service & Sales
- Civics, American History & Why It Matters



Career Day

As the summer began to wind down and our kids began to prepare for back to school, we hosted a First Responder Career Day on our Paxson Campus. It was a huge success!! Thank you to the Palm Beach County Sheriff's Office Community Policing Unit and their Therapy Dog Team, West Palm Beach Police Department SWAT Team, United States Secret Service - West Palm Beach Division, and to Palm Beach Gardens Fire Rescue for coming out to spend some time with our kiddos! They loved learning about the job of a Law Enforcement Officer, and how to become a Law Enforcement Officer, and they loved the therapy dogs and learning the role they play in situations of trauma. Our kids were very excited to see the WPBPD SWAT Truck, see all the neat stuff inside and they loved getting to climb in the truck and pop out of the top! They enjoyed spending time with PBG Fire Rescue learning about the job and all the cool stuff on the truck. They even got to experience using the fire hose!

We think it is safe to say we now have a few future first responders on our hands! Thank you to our Career Day Sponsor, Carrier! To end the summer on a cool note, we threw our kids a foam party thanks to our friends at Boca West Children's Foundation! Thank you to our friends at First Republic Bank and The Breakers for spending the day volunteering with us!



2022 Graduates

This year, Place of Hope is tremendously proud of our residents for working hard to achieve:

4 HIGH SCHOOL DIPLOMAS

2 ASSOCIATE DEGREES

1 BACHELOR DEGREE



Did you know that less than 50% of children and youth in foster care will graduate, and only 2% will go on to post-secondary education? Place of Hope's youth are shattering statistics with every young adult in our care, eligible for graduation, has graduated or is on track to do so! As a supporter of Place of Hope, you are a part of rewriting the lives of these amazing kids.



Special Recognition



ANASTASIA

Anastasia received Place of Hope's Kasma Family Education & Enrichment Award. Her drive and determination to serve her community and excel in school has earned her a scholarship to a high-level high school as well as a special out of state summer program!



ANCY

Recently while at Villages of Hope, Ancy graduated from Eastern Florida State College with her Bachelor of Science in Organizational Health Management.

Special Recognition



BRENDA

Brenda earned Place of Hope's Kasma Education & Enrichment Award for her dedication and perseverance. As an incoming Junior, she is excited to graduate high school in two years to become a teacher "with a purpose."



ELISE

Elise will head to Valencia College in the fall. She wishes to transfer to the University of Central Florida to pursue her career as a 2-D Animator.

Scholarship Awardee



FAITH

Faith is the recipient of our L.E.A.D. Scholarship. After graduating Palm Beach Gardens High School, she is now enrolled at Palm Beach State College for a summer semester.

"I am so excited to say I am the first person in my family to go to college! Thank you to Place of Hope and Place of Hope's Kasma Education and Enrichment Fund for believing in me!" - *Brenda*



JA'LA

During her time living at Place of Hope, Ja'la was able to graduate high school and began working on her Associates Degree. We are excited to share that she has now earned her Associates Degree! She is at Villages of Hope working hard for her next step, continuing her 4-year degree and plans to become a teacher.



JA'MYAH

Ja'Myah is a first-generation high school graduate, graduating from Dwyer High School. She is attending Palm Beach State College with the hopes of becoming a police officer after earning her Associates.



JASMINE

Jasmine has maintained the A/B Honor Roll for most of her high school senior year and earned certifications in web/graphic design and computer science. She plans to attend Palm Beach State College this fall.



KEISHA

After living in one of our cottages at KidSanctuary, Keisha transitioned to Villages of Hope and worked hard to get her first apartment. Her diligence and dedication earned her her Associates Degree a semester early in December. She plans to now attend Florida Atlantic University.

Answering The Call

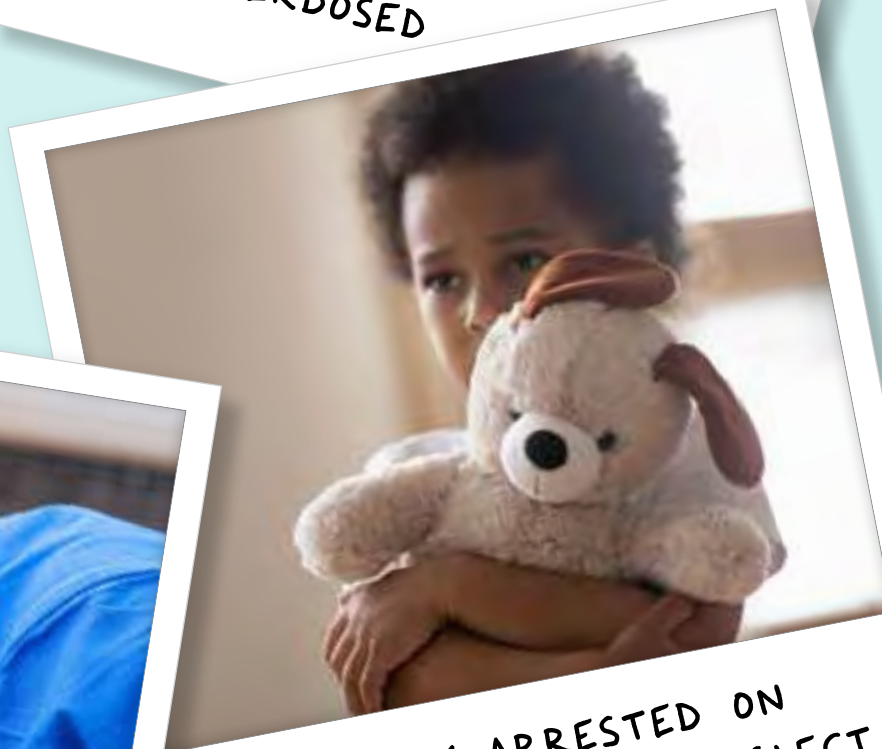
Recently, a grandmother took in her three grandchildren ages 3 years, 2 years, and 8 months old. Dad has abandoned them, and mom is struggling with an addiction.

Not having children for years and not having the means to purchase everything she needs to care for this sibling group, a call came in for material support for clothes, shoes, diapers, baby formula, and a car seat.

With our friends, Hands and Feet through our Shade Tree Family Outreach program, we were able to answer the call and get Grandma and the siblings the things she needed.



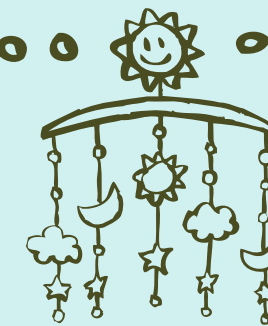
MOM OVERDOSED



MOM OF SIX ARRESTED ON CHARGES OF NEGLECT



GROUP OF 3 FOUND IN THE WOODS



Shade Tree Family Outreach

FAMILY STRENGTHENING & CHILD ABUSE PREVENTION

Our Shade Tree Family Outreach program was reborn in 2022 in a response to the critical need to provide material support to families and children who touch or are at risk of touching the child welfare system. Through our Shade Tree Family Outreach Program, we are serving more single mothers, foster children, young adults aging out of the foster care system or otherwise homeless youth, and families in crisis than ever before. We provide family outreach and intervention programs, family strengthening and preservation initiatives, child abuse and neglect prevention initiatives and critical services to families and children who are navigating the child welfare system.

We have three dedicated outreach locations spanning Boca Raton to Stuart. As the regional headquarters, the Seymour St. John Outreach Center is located on our newly acquired Stuart campus in Martin County and is serving over 100 families per month. Our Paxson Campus in Palm Beach Gardens is centrally located serving the surrounding community, and thanks to the Moss Foundation, our Boca Raton campus has its newest addition with the Renee and David Feder Shade Tree Family Outreach Wing.

Place of Hope is working with several other organizations to provide material support to families and children who are in need, locally, domestically, and internationally. In working together, we can provide inner city outreach, Caribbean outreach, Mexico outreach, and other efforts to deliver resources to people in desperate need. Some of the organizations we are working with include:

- The Hands and Feet FL
- New Creation Missionary
- To Boldly Go
- Hurricane Ian Disaster Relief (Christ Fellowship Church, Next Level Church, Convoy of Hope and Samaritan's Purse)

Since 2008, we have been able to bless well over 25,000 children, young people and families through our Shade Tree Family Outreach program. Year to date in 2022, we have been able to bless and serve over 6,000 in need!

To Boldly Go

What started as a mobile gospel during the pandemic, became a house of ministry providing refuge for those who are hurting, hungry or rejected. For nearly three years, To Boldly Go was praying and searching for a "ministry house" while bringing to the people hope and love through groceries, free haircuts, community movie nights, youth volleyball games, and more. They found a "fixer-upper" piece of property perfect for the ministry, but it would require a lot of sweat equity and funding. Thanks to a lead gift from Place of Hope, the hard work and efforts from the To Boldly Go team, and God's provision, The Ministry House became a reality as "La Casa del Padre (The Father's House)" completed construction! This open-air building is complete with everything they need to advance their mission. Together we are serving children and families in Mexico providing them weekly activities like English classes and tutoring, a women's bible study, a kids' bible study, a discipleship program, counseling, rehabilitation, singing and guitar classes, and more!



AN INTERNATIONAL MINISTRY IN
TIZIMIN, MEXICO



AN INNER CITY AND CARIBBEAN
OUTREACH MINISTRY

New Creation Missionary

For 21 years, New Creation Missionary has worked hand in hand with Place of Hope collaborating on many projects within our Shade Tree Family Outreach program to improve the lives of individuals and families within the West Palm Beach inner city area and some of the impoverished areas in the Caribbean. The missionary takes the "overflow" of gently used items and provides for those in need. While the last two years have been difficult, for all, our shared mission was strengthened and our bond with the communities grew stronger. Recently, New Creation Missionary was able to send approximately 3,000 gently used books to schools in the Caribbean – opening a whole new world, through reading, to the students. Additionally, for the children, we were able to distribute 200 pairs of gently used shoes and over 100 pairs of brand-new slippers. Through Treasures of Hope the missionary was able to distribute home furnishings and other gently used items within the communities we serve.

The Hands and Feet

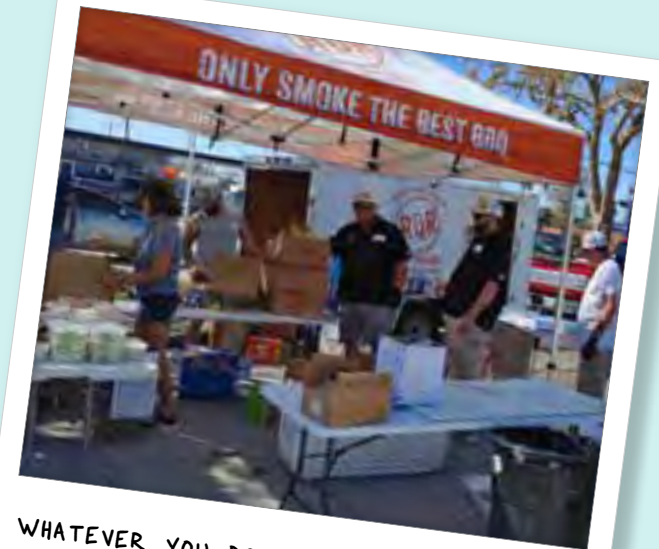
In 2022 Place of Hope began its work with Hands and Feet with their "Supporting Hands" and "Guiding Hands" programs. Their "Supporting Hands" program delivers essential items to children impacted by the child welfare system. Their "Guiding Hands" program provides support to aged out youth bridging the gap between these youth and community members who may want to support them. Three of their five locations are on Place of Hope campuses: Place of Hope Stuart (The Shade Tree Family Outreach headquarters), Place of Hope Paxson Campus in Palm Beach Gardens, and The Leighan and David Rinker Campus in Boca Raton.



DELIVERING HELP AND HOPE

Hurricane Ian Disaster Relief

Shining a light in the darkest hours, Place of Hope teamed up with Next Level Church of Ft. Myers, Christ Fellowship Church, Convoy of Hope, Samaritan's Purse and Red Dirt Rich BBQ to serve those devastated by Hurricane Ian in October 2022. Together we were able to participate in providing provisions to thousands of individuals, including 125,000 hot meals to First Responders, shelters, hospitals, and those on the front lines. We participated in mobilizing 100 teams of volunteers to do projects from tarping roofs, clearing debris, and clearing flooded houses.



WHATEVER YOU DO FOR THE LEAST OF
THESE, YOU DID FOR ME. MATTHEW 25:40

Moments and Memories

NORTH REGION

This year started off with a bang at our **10th Annual Sporting Clays Fun Shoot** sponsored by BMO Private Bank, The Boswell Family, and Mike Burke and Denison Yachting. The shoot was moved to Quail Creek Sporting Ranch and shooters were offered two flight times. We added a fun VIP Tailgate Dinner & Cabin Experience for our sponsors. It was a record-breaking year with more shooters than ever and more funds raised.

Transporting over 400 of our closest friends to the Amalfi Coast was our “Una Notte di Speranza” **16th Annual Hope Bash Palm Beach** co-chaired by Trish Bender, Nicole Bessette, Sue Ende, Michelle Grande, and Danielle Jenkins. Presented by Bruce Paddock, Hope Bash was back at the renowned Trump National Jupiter, where guests enjoyed a beautiful and exciting night. Our 2022 Harris L. Weinstein Hero of Hope Award was given to Heather & Steve Atkins.

Our **6th Annual KDW Fishing Tournament**, co-chaired by Jason Doyle and Jimmy King, had more anglers than ever to reel in hope for foster children! We opened two additional weigh-in stations spanning from Palm Beach Shores to Port Salerno, moved the Captain’s Meeting to Tiki 52 in Tequesta, and the Awards dinner to Harbourside Jupiter. A special thanks to all our peer-to-peer fundraisers, committee members, and sponsors who made this event a success!

2022 was the year of bigger and better events! Our **4th Annual Paradise on the Peninsula** was no exception! Presented by The Boswell Family, Christophers Kitchen, Crypto Capital Ventures, Helping Hands Foundation, and Rugby Street Foundation, this boots and bling outdoor Florida-centric event welcomed over 400 friends. Mike Massey was honored as our Hometown Hero (individual) and Honda Classic Cares was honored as our Corporate Hometown Hero.

Earlier this year the Founder of KidSanctuary, Connie Frankino, donated the KidSanctuary Campus to us. To honor the legacy she has created and the hundreds of children’s lives she has changed, we honored her as our Lifetime Legacy Awardee at the **KidSanctuary Holiday Hoedown by The Sea** an annual gala held at The Pelican Club, Jupiter. We also recognized several others who have been mission-critical to the success of the campus. Along with nearly 200 of our Central Palm Beach County friends, we celebrated the passing of the torch, and lives changed with live entertainment, dinner, dancing, raffles, and a live auction.

SOUTH REGION

On Tuesday, April 26th, Place of Hope at The Leighan and David Rinker Campus hosted our **8th Annual Angel Moms Brunch and Benefit at Royal Palm Yacht and Country Club**. Guests joined us “Under the Lemon Trees” for this inspiring annual event. We heard from our keynote speaker, Christina Meredith as she shared her journey of aging out of the foster care system. Place of Hope resident, Allen Brown, shared his journey coming to Place of Hope and his aspirations for a successful future in engineering. Thank you to all our faithful sponsors and Katharine Moss who was honored as our Leighan Roberts Rinker Angel of Hope

Our **Annual Hope Bash Boca** was held Saturday, November 5th at Boca West Country Club. Our 500 guests were treated to “Harvest” a beautiful Napa Valley-inspired dinner and auction. This amazing event was made possible with our incredible sponsors! We were pleased to present Cherie and John Arscott with our Jay DiPietro Hero of Hope award. Their support of our mission has made a huge impact.





Together We Can

We are grateful to all those who supported our mission through peer-to-peer fundraising! Peer-to-peer fundraising initiatives empower individuals and groups to organize personal campaigns raise awareness and funding for the children, youth, and families in Place of Hope's daily care. From our signature KDW event, Fish for Hope, to Parties with a Purpose, Shop & Shares, Fit for Hope events, and birthday fundraiser events, these campaigns help our mission thrive as our supporters use their network and influence to share why they support Place of Hope and how others might as well.

This year was bountiful with the efforts and advocacy of our supporters. We kicked off the year with Walk by Faith hosted by Amy DeVries. Our friends at the St Lucie County Sheriff's Office hosted a First Responders Crossfit-style challenge, and FAU and Lynn University teamed up for "Hockey for Hope." From South Palm Beach County north into Martin County, we had businesses get creative too! Florida Coast Equipment promoted a giveback for every piece of equipment sold at any of their locations, Tide and Table in Tequesta hosted their Anniversary Party to benefit Place of Hope, while FUSE Specialty Appliance kicked off their Grand Opening with a huge giveback to Place of Hope raising over \$10,000! Our Fish for Hope anglers collectively raised nearly \$60,000 just through peer-to-peer fundraising!

Jen Hernandez-Massey turned tacos into philanthropy, while Alison Gatto and Nancy Marquez made a Summer Splash raising funds and awareness in the community. Our friends Donna & Bob Goldfarb, Rene Epsinal, Dr. Lickstein, Luke Pingleton, and Coni & Doug Rhudy stepped up to be Champions for Children. For the third year in a row, The CrossFit Squad hosted their Throwdown for the Kids raising a record breaking \$25,000 for our youth and survivors of human trafficking!

The creativity and drive of our supporters amazes us as they work tirelessly to lend their time, treasures, and talents to change children's lives.



Building Hope



Initial
Independence



Emergency
Food



Independent
Living Training



New Resident
Intake



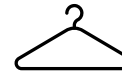
Transportation



Education and
Enrichment



Neighborhood Family
Style Foster Care



Clothing and
Personal Items



Therapy and
Counseling

Our Building Hope / One Life Annual Fund Giving Society provides the immediate and critical financial support we need to care for those we serve 24/7 year-round. The generosity of this society, covers annual operating expenses which include but are not limited to programs services, education, enrichment and wellness, high-quality staff and case coordinators, as well as expenses related to the maintenance and upkeep of each cottage, apartment unit education and enrichment building across our footprint.

Our Giving Society is essential and critical as each day we serve hundreds of the most vulnerable children, youth, and families in our community.

SINCE 2001 WITH THE GENEROSITY OF OUR SUPPORTERS



FOSTER CHILDREN,
HOMELESS YOUTH,
FAMILIES IN TRANSITION
& HUMAN TRAFFICKING
SURVIVORS WERE SERVED



FAMILIES SERVED
ANNUALLY THROUGH SHADE
TREE FAMILY OUTREACH



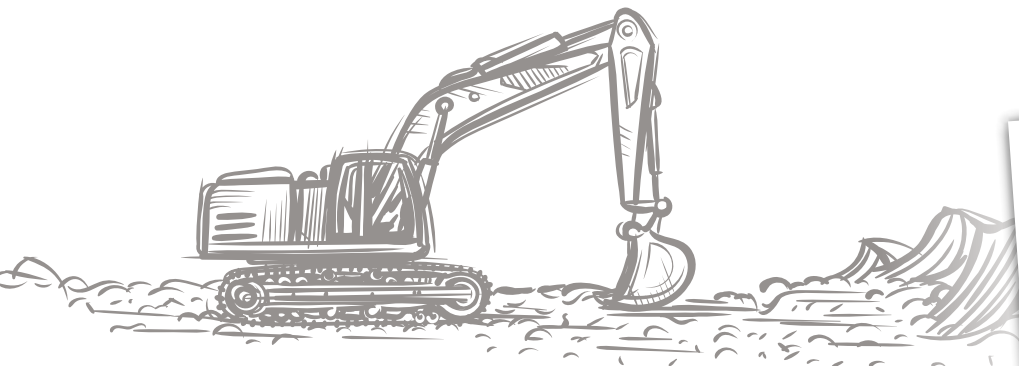
SIBLINGS WERE
KEPT TOGETHER



AGED OUT FOSTER
YOUTH OR HOMELESS
YOUTH AND FAMILIES
TRANSITIONED INTO
HEALTHY ADULTHOOD



NEW MOMS AND BABIES
WERE SERVED THROUGH
OUR COMPREHENSIVE
MATERNITY HOME



Expansion and Growth

STUART CAMPUS

After 60 years of Christian service to boys and families, Samaritan's Home for Boys & Families decided to close and give their real estate assets to Place of Hope. This is another historic and exciting milestone for Place of Hope.

We have already launched our Phases I & II Capital Expansion Campaign and have begun significant improvements (planning and construction). Already, we have raised almost two-thirds of the projected funds needed to complete these initial phases of expansion debt free. We have demolished five structures and a pool and made several other needed site improvements. Regionally the community is rallying behind this project and the needs are great. There are no programs like this in the Martin County area.

1. Full renovations have commenced on our Marshall E. Rinker, Sr. Foundation Neighborhood Foster Care Family Cottage (6-8 beds for hard to place children).
2. The Lane Family Endowment for the Future has been established and funded for the Marshall E. Rinker, Sr. Foundation Neighborhood Foster Care Family Cottage.
3. Full renovations have commenced on our two Berlin Family Foundation "Mommy and Me" Transitional Housing Cottages for young mothers with children (Villages of Hope).
4. We received approval to move forward with future expansion, including planning, site development, infrastructure, and construction of two new transitional housing buildings (16 Cottages / 32 beds). This expansion area within the campus is named "The Bender Family Village" made possible by John and Bobbi Erbey.
5. The Boswell Family Education and Enrichment Academy has been established and will grace our Seymore St. John Outreach Center.
6. The Sal and Kim Tiano Endowment for the Future has been established for the Campus.
7. Chuck and Diane Hanlon have provided for the first of eight Cottages within the first new building in our Bender Family Village (made possible by John and Bobbi Erbey).



The Treasure Coast area is exceedingly generous in its individual and collective philanthropy, both here and around the world. This community's commitment to faithfully serving those Jesus referred to as "the least of these" is an example for all.

Place of Hope was presented with a challenge to provide care and services to the Treasure Coast area, but this opportunity requires significant improvements and infrastructure development to our new Stuart campus. There are various naming opportunities in our capital campaign that will ensure God's children, youth, and families are properly cared for and wrap around services provided as we together transition them to healthy independence.

AMBASSADORS OF HOPE COTTAGE

"For I know the plans I have for you," declares the Lord, "plans to prosper you and not to harm you, plans to give you hope and a future." - Jeremiah 29:11

Many of the opportunities will be fulfilled by individual gifts provided by families, foundations, and individuals. Conversely, our new Ambassador's Cottage Campaign component challenges the community as a whole to come together collectively (at various amounts), as Ambassadors (via numerous gifts and fundraising strategies), allowing the aggregate goal to be met, together, as a community.

This effort is to raise a combined \$200,000, to secure the needed funds for a new two-bedroom family cottage within our new Erbey Family Transitional Housing Complex (Building #1).

- The full development, construction, furnishing, and outfitting for this complex (8 units/16 beds) totals \$3,200,000.
- A generous lead gift to name this complex has already been provided by John and Bobbi Erbey.
- Each of the eight units will be named as well and allow the project to move forward debt free.
- Unit #1 has been provided for and named by Chuck and Diane Hanlon.
- Unit #2 will be our Ambassadors Cottage.



We propose to raise the needed \$200,000 through the community's combined efforts, energy, gifts, fundraising events, and generosity. Individual gifts of all amounts will be recognized as delineated below. Ambassadors who choose to help raise funds through events, peer-to-peer requests, or via personal contacts with foundations, families, and individual contacts, will also be recognized as delineated below (funds can be given or raised), along with the donors.

- \$50,000 Visionary Ambassador
- \$25,000 Hope Ambassador
- \$15,000 Defender Ambassador
- \$10,000 Protector Ambassador
- \$5,000 Leadership Ambassador
- \$2,500 Advisor Ambassador
- \$1,000 Advocate Ambassador
- \$500 Guidance Ambassador
- \$250 Sustainer Ambassador
- \$100 Champion Ambassador

The southern Florida philanthropic community has a fervent desire to participate in the success of this next phase and building on this beautiful and unique campus. Thank you for all you do to lift, support, and bless others in need! I genuinely believe we can further this proven model together and offer a scalable shining example for housing providers nationally.



SAN & CONNIE FRANKINO KIDSANCTUARY CAMPUS

In 2012, Connie Frankino founded an eight-acre campus in West Palm Beach to serve foster children. Knowing it would take a team to be successful, she called on Place of Hope as the management organization partner to run all programs modeled after Place of Hope's Neighborhood Family Style Residential Foster Homes. In August 2022, Connie and the Board donated the eight-acre campus, its four cottages, Angel Crossing Enrichment Center and full ownership to Place of Hope. Since its inception, 133 children have found refuge, healing, love, and a brighter future.



THE LANE CENTER DEDICATION

On March 30, we prayed, dedicated, and celebrated The Lane Center and Gray Family Peninsula Social Enterprises. It was an inspiring and touching ceremony shared with friends and loved ones. Guests had the opportunity to tour the space and enjoy refreshments and light bites. We are so grateful for everyone who has poured into this social enterprise and commercial office space turning a vision into a reality! A very special thank you to Tom & Kathleen Lane, Johnny & Terry Gray, The Berlin Family Foundation and The Rankin Family!

"Cultivating Hope" through the generosity of Tom and Kathleen Lane, The Berlin Family Foundation and The Roger B. Rankin | The Rankin Family with lead capital gifts, Place of Hope opened doors to The Lane Center, home to Peninsula Executive Suites, Peninsula Executive Offices, and The Gray Family Peninsula Social Enterprises. Of this 18,000 sq. ft. building, half of it is home to three major Executive Suite Tenants, Basis Aesthetics and Medical, Wall Private Wealth, and a local family foundation, with the other half comprised of unique and private co-shared working space for tenants and licensees. The Gray Family Peninsula Social Enterprise (PSE) is action based and applies commercial strategies to maximize improvements in financial and social well-being. PSE addresses critical social problems and basic unmet needs through innovation. Net proceeds directly benefit abused and neglected children, homeless youth and families in transition, human trafficking survivors, single moms with kids and child abuse and human trafficking prevention efforts.



LEIGHAN ROBERTS RINKER COTTAGE REFRESH

We are answering the need for more affordable housing for mothers in crisis with updates to our Leighan Roberts Rinker Parenting Cottage. Thanks to Katharine Moss and partners, the cottage is more functional for young women and children to safely call home. The Leighan Roberts Rinker Parenting Cottage has served foster children, young adults, human trafficking survivors, and now single mothers. The renovation began with Place of Hope "Angel Moms" of the Rinker Campus who volunteer their time and efforts to the organization. When Angel Mom Katharine Moss was in the cottage to replace bedding for the residents, she saw opportunities for making the space more functional. Creating a more functional space turned into painting and not too long after the entire cottage was being updated! "It was a labor of love," said Katharine. "My goal is to lift up the kids that need help, so they know someone loves them." She noted how the project came together organically just as God was often the topic of discussion among contractors working on site who were unfamiliar with the support Place of Hope gives to desperate children, youth, and families!





Social Enterprises

Our Peninsula Social Enterprises are action-based and apply commercial strategies to maximize improvements in financial and social well-being. We address critical social problems and basic unmet needs through innovation. Net proceeds directly benefit abused and neglected children, homeless youth and families in transition, human trafficking survivors, single moms with kids, and child abuse/human trafficking prevention efforts.

Our social enterprise business benefits the children, youth, and families in our care by providing sustainable funding, as well as employment opportunities for our youth. Net proceeds directly support our critical programs and services.



Stewardship

2022 SOURCES OF FUNDING (OPERATING)



Board of Directors

Ronald "Mickey" Nocera
President
Board Chairman

John T. Christiansen
Board Member
The Law Offices of
John T. Christiansen, P.L.

Joseph A. Kloba, Ed.D.
Board Member
Provost & Chief Academic
Officer, Professor of Counseling
Psychology, Retired
Palm Beach Atlantic University
Organizational Consultant

Tom Lane
Board Member
Vice Chairman of
Energy Capital Partners

Jeannine Morris
Board Member
The Morris Group
at Lang Realty

Donna J. Mullins, M.Min.
Founding Board Member
Co-Founder,
Christ Fellowship Church

J. Todd Mullins, D.Min.
Board Member
Senior Pastor,
Christ Fellowship Church

Thomas D. Mullins, D.Min., Ph.D.
Founding Board Member
Founding Pastor,
Christ Fellowship Church

Leighan R. Rinker, Ed.D.
Board Member
Founder and Chair, Board of
Beginnings of Palm Beach County

Charles L. Bender, III
Board Member
Founding CEO,
Place of Hope

Pastor Ellis McKenzie
Board Member
Founder, New Creation
Baptist Church, New
Generation Missionary,
and Creation Caribbean
Mission

Council Members

Leadership Advisory Councils

Northern Palm Beach County

Amy Allen
Heather Laughlin Atkins
Doug Avdellas
Alexis Barbish-Somer
Carrie Bertram
Nicole Bessette
Yesenia Burgos
Mike Burke
Ann Christiansen Gray
Noemi Coltea
Tom DeRita
Mike Dixon
Sue Ende
John Erbey

Bob Fashano
Bob Goldfarb
Michelle Grande
Chuck Hanlon
Don Hearing
Lance Ivey
Josh Kellam
Ken Kennerly
Greg Kino
Wendy Link
Earl Mallory
Shelby Mahan
Mark Montgomery
Dean Morehouse
Christy Peterson
Joe Psalmonds
Mike Robertson
Gery Rodriguez
Heidi Schaeffer

Malcolm Sina
Richard Slawson
Ryan Wall

Southern Palm Beach County

Arthur Adler
Carly Altier
Cherie Arscott
Trisha Bachman
Elsy Bello Gomez
Melissa Bonaros
Bonnie Boroian
Susan Brockway
Rick Catinella
Rebecca D'emic
Amy DeVries
Mary Donnell
Renee Feder

Maria Fife
Stuart Fife
Kelly Fleming
Frank Frione
Kathryn Gillespie
Suzette Hernandez
Sue Heller
Bonnie & Gary Hildebrand
Jennifer Houston
Amy Kazma
Ryan Leeds
Lynda Levitsky
Mark Mileusnic
Jeannine Morris
Katharine Moss
Eileen Needleman
Dr. Anjali Noble
Frank Occhigrossi
Shari Parson

Saily Perkins
Gary Peters
Wendy Sadusky
Neil & Trisha Saffer
Jamie Sauer
Rebecca Scott
Joe Seta
Christine Shaw
Thomas Smith
Robert Snyder
Nicole Stelzer
Ed Tinari

Treasure Coast

Jean Bowen-Smith
Susan Chenault
Asst Chief Richard
DelToro
Jody Dupuis

Rene Espinal
Scott & Katherine Fay
Commissioner Harold Jenkins
Sarah Lamm
Jessica & Jeremy LeMaster
Nancy Marquez
Representative Toby Overdorf
Lt. Ross Partee
Jaime Schwartz
Debra Shah
Representative John Snyder
Representative Dana Trabulsy
Shelley Trevisol
Sue & Tom Whittington

Locations

Paxson Campus

Palm Beach Gardens

Donna's Place at the Villages

Palm Beach Gardens

The Leighan and David Rinker Campus

Boca Raton

Marshall and Vera Lea Rinker Village

Boca Raton

KidSanctuary Campus

West Palm Beach

Harris L. Weinstein Outreach Center

Hobe Sound, serving the Treasure Coast

The Lane Center

Palm Beach Gardens

Gray Family Peninsula Social Enterprises

Palm Beach Gardens

Peninsula Coffee at the Harris L. Weinstein Outreach Center

Hobe Sound

Peninsula Executive Suites and Peninsula Social

Palm Beach Gardens

Place of Hope Treasure Coast

Stuart Campus

The Bender Family Village

(made possible by John and Bobbi Erbey)

Stuart Campus



Place of Hope Headquarters

9078 Isaiah Lane, Palm Beach Gardens

561.775.7195 | placeofhope.com

Place of Hope Tax ID # 85-8012546695C-5 EIN # 65-0841384

ACCOLADES AND ACHIEVEMENTS

"PERFECT SCORE – 100"
by Charity Navigator for Finance,
Accountability and Transparency



CHARITY NAVIGATOR
Your Guide To Intelligent Giving

Ranked #1 in the nation in Youth,
Shelter and Crisis Services
FOUR YEARS!



CHARITY NAVIGATOR
★★★★ Four Star Charity

Ten Years Consecutive
"4-out-of-4 Star Rating"

Candid.

6 Years Consecutive
"Platinum Seal of Transparency"

THE HUFFINGTON POST

One of the "11 Top-Rated Charities That
Changed The World In 2014"



2019 True Inspiration Awards Winner