



# COVID-19

Return-to-Work Clearance Assessment,  
Testing, and Ongoing Surveillance

2020

## ➤ Getting Your Workforce Back to Work

---

**Concentra's 520+ medical centers now offer COVID-19 testing for **asymptomatic** employees to provide initial clearance for return to work.**



## ➤ Concentra Assessment, Testing, and Surveillance Services

---

Concentra recommends initial screening using our **COVID-19 Assessment**. Your employees complete our assessment questionnaire and a Concentra clinician reviews the responses to determine if the employee may go to work or if testing for active COVID-19 infection, testing for COVID-19 antibodies, or an in-person clinical examination is recommended.

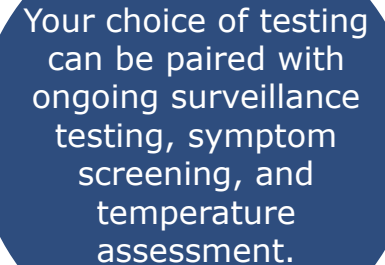
Concentra offers COVID-19 RNA testing for active infection and COVID-19 antibody testing for possible COVID-19 immunity. Options include:

**COVID-19 Antibody Test – Initial:** includes comprehensive screening and tests employees for possible COVID-19 immunity

**COVID-19 RNA Test – Initial:** includes comprehensive screening and tests employees for active COVID-19 infection

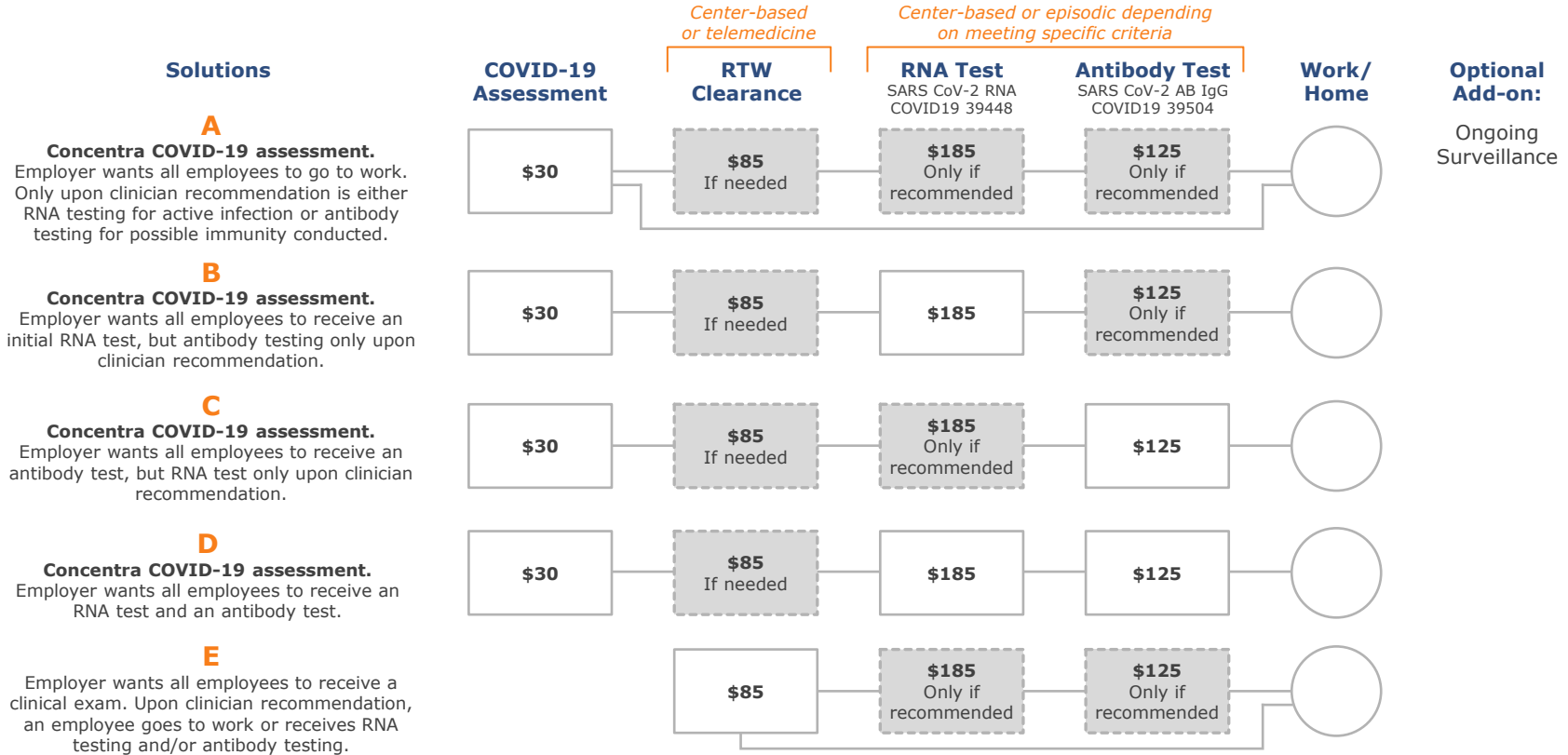
**COVID-19 RNA Test – Ongoing Surveillance:** includes ongoing screening and testing of employees for active COVID-19 infection

**COVID-19 Return to Work (RTW) Clearance:** following a suspected or confirmed COVID-19 illness or exposure; includes return-to-work evaluation and screening. COVID-19 test-based return-to-work options meet state requirements or employer protocols



Your choice of testing can be paired with ongoing surveillance testing, symptom screening, and temperature assessment.

# ➤ Solutions To Fit Your Immediate and Long-term Needs

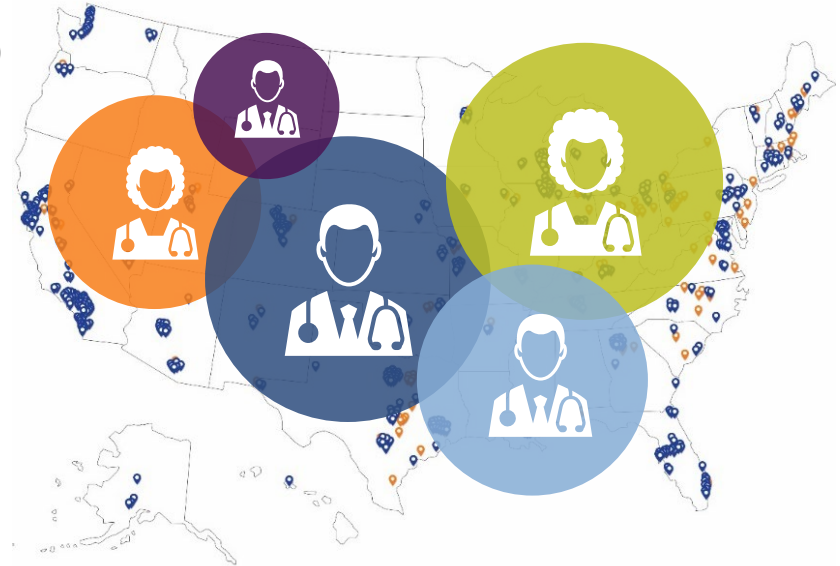


## ➤ The Concentra Advantage

**Your employees' COVID-19 status will be assessed by qualified experienced workers' compensation clinicians who can apply their medical knowledge and experience to evaluate the risk of each individual employees and the risk of your workforce at large**

- Our medical support staff is trained in COVID-19 protocols to conduct COVID-19 testing
- Our clinicians make return-to-work recommendations based on guidance provided by the Centers for Disease Control and Prevention (CDC) and the Occupational Safety and Health Administration (OSHA)

**You have the added assurance that services will be delivered consistently from more than 520 Concentra medical centers across your employee population**



# ➤ About RNA and Antibody Tests

**Concentra uses Food and Drug Administration's emergency use authorization (FDA EUA) tests procured by Concentra and processed by nationally recognized laboratories.**

## COVID-19 RNA Test

- Nasal swab test used to determine if someone is currently infected with COVID-19
- Turnaround time 2-3 days from date of collection

## COVID-19 Antibody Test

- Blood test used to determine if someone has had COVID-19 and has possible immunity
- Turnaround time 3-4 days from the date of collection

Concentra asks all patients to wear their own face covering or mask when visiting a Concentra center to help protect other patients and our staff from potential exposure to COVID-19. Concentra is unable to supply face coverings at this time.

## RNA Testing Limitations

### False positive test:

- Extremely low risk; a positive test is a good indication of infection

### False negative test:

- More common than false positive tests

## Antibody Testing Limitations

### False positive test:

- Cross reactivity with other coronavirus infections

### False negative test:

- Not enough time from the time of infection to develop antibodies
- Antibody response has decreased to an undetectable level

### **Concentra Telemed® is an option for access to testing when there is no Concentra medical center nearby.**

For employees who do not have a Concentra medical center nearby, Concentra Telemed is an option to evaluate for **COVID-19**. If the clinician determines the need for RNA or antibody testing, the Concentra clinician will assist patients by directing them to local resources for testing.

#### **Important information regarding a COVID-19 screening using telemedicine:**

- The employee will receive instructions for the telemedicine visit when scheduling an appointment
- The employee must have a thermometer and take his/her own temperature during the telemedicine visit, enabling the clinician to view the temperature reading
- The clinician will review the lab results and determine clearance for return to work
- Lab results and billing will be sent to the employer based on existing protocols established with Concentra

#### **To schedule telemedicine COVID-19 testing:**

If there isn't a Concentra medical center nearby, employees can contact any Concentra medical center in their state to schedule a telemedicine appointment.

## ➤ Getting Started

---

Contact your local leadership team to get COVID-19 services for your employees.

**Tony Culp** - Director of Operations | Maryland & Virginia

**Concentra**

717-817-2512 (m)

609 Global Way

Suite 100-111

Linthicum, MD 21090

**Mary Beth Ripley** - Key Account Manager

**Concentra**

410.350.4895 Fax – 410.975.4577

1419 Knecht Avenue

Baltimore, Maryland 21227