

NBJH LANGUAGE ARTS CURRICULUM UPDATE

NORTHBROOK DISTRICT 28
BOARD OF EDUCATION MEETING
JUNE 25, 2019



Link to K-5 Language Arts

The revision of the 6-8 literacy curriculum builds on the work of the K-5 revisions. Last year, we revised the K - 5 curriculum to ensure standards alignment, address the balance of surface and deep structure systems learning, and incorporate grammar instruction.



Process of Selecting a 6th-8th Curriculum

The NBJH language arts team identified “must-haves” related to assessment, text selection, writing, grammar and vocabulary, instructional practices, alignment, accessibility, choice and voice, and technology integration.

We researched six different programs and selected Amplify as the program that best addresses our must-haves.

Amplify is specifically designed for 6th–8th grade students with high-interest texts and rich synthesis opportunities.

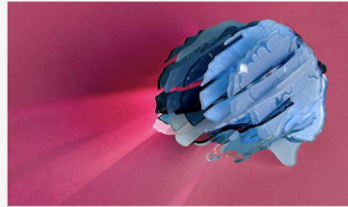


SUB-UNIT 1

Phineas Gage: A
Gruesome but True
Story About Brain
Science

by John Fleischman

11 Lessons



SUB-UNIT 2

Inventing Ourselves:
The Secret Life of the
Teenage Brain

by Sarah-Jayne Blakemore

5 Lessons



SUB-UNIT 3

The Man Who
Mistook His Wife for
a Hat

by Oliver Sacks

3 Lessons



SUB-UNIT 4

Write an Essay



SUB-UNIT 5

Brain Science
Reading Assessment

Amplify fits our Literacy Studio model.

- Closely aligned with our literacy studio model and leaves time for voice and choice
- Will expose our students to a wide variety of genres of texts with culturally diverse authors
- Big ideas that are worth exploring



Amplify has strong assessment tools.

- Standards-aligned common assessments for both reading and writing

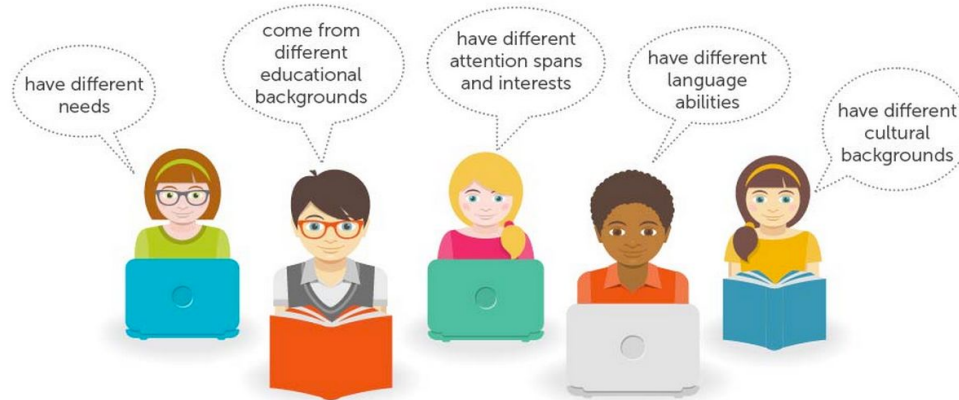


Amplify includes robust differentiation.

- Six levels of instructional settings to differentiate for the needs of all learners

WHY DIFFERENTIATED INSTRUCTION?

Classrooms are filled with students who:



Amplify develops students' writing skills.

- Students write daily, with clear expectations for high quality writing



Amplify addresses grammar and vocabulary.

- Grammar and vocabulary practice are tailored to individual students and have a high level of student engagement

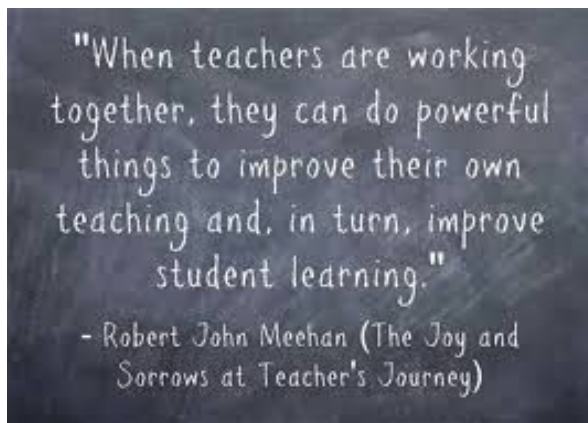


Professional Learning

All teachers participated in one or two days of training with Amplify.

Learning Teams are meeting throughout the summer to outline their new units.

Professional learning will continue throughout next year and beyond.





What are our success indicators?

High levels of student engagement

High levels of teacher satisfaction

Increased student achievement in reading and writing on
IAR/NWEA/PSAT