

Happening at Hildebrand

IN THIS ISSUE

- MESSAGE FROM THE CEO
- NEW CONGREGATE SHELTER IN CAMBRIDGE
- MEET A VERY SPECIAL DONOR: TEQUANA BAYLESS
- BOARD MEMBER PROFILE: JESSICA HOWE
- SPECIAL THANK YOU TO CUMMINGS FOUNDATION
- MEET A HILDEBRAND IN-KIND DONOR: LOVIN' SPOONFULS
- WELCOME, HILDEBRAND SUMMER INTERNS!
- BENJAMIN BANNEKER CHARTER SCHOOL
- CAMBRIDGE RINDGE AND LATIN BLACK STUDENTS UNION/CAMBRIDGE YOUTH COUNCIL



MESSAGE FROM THE CEO

Shiela Y. Moore

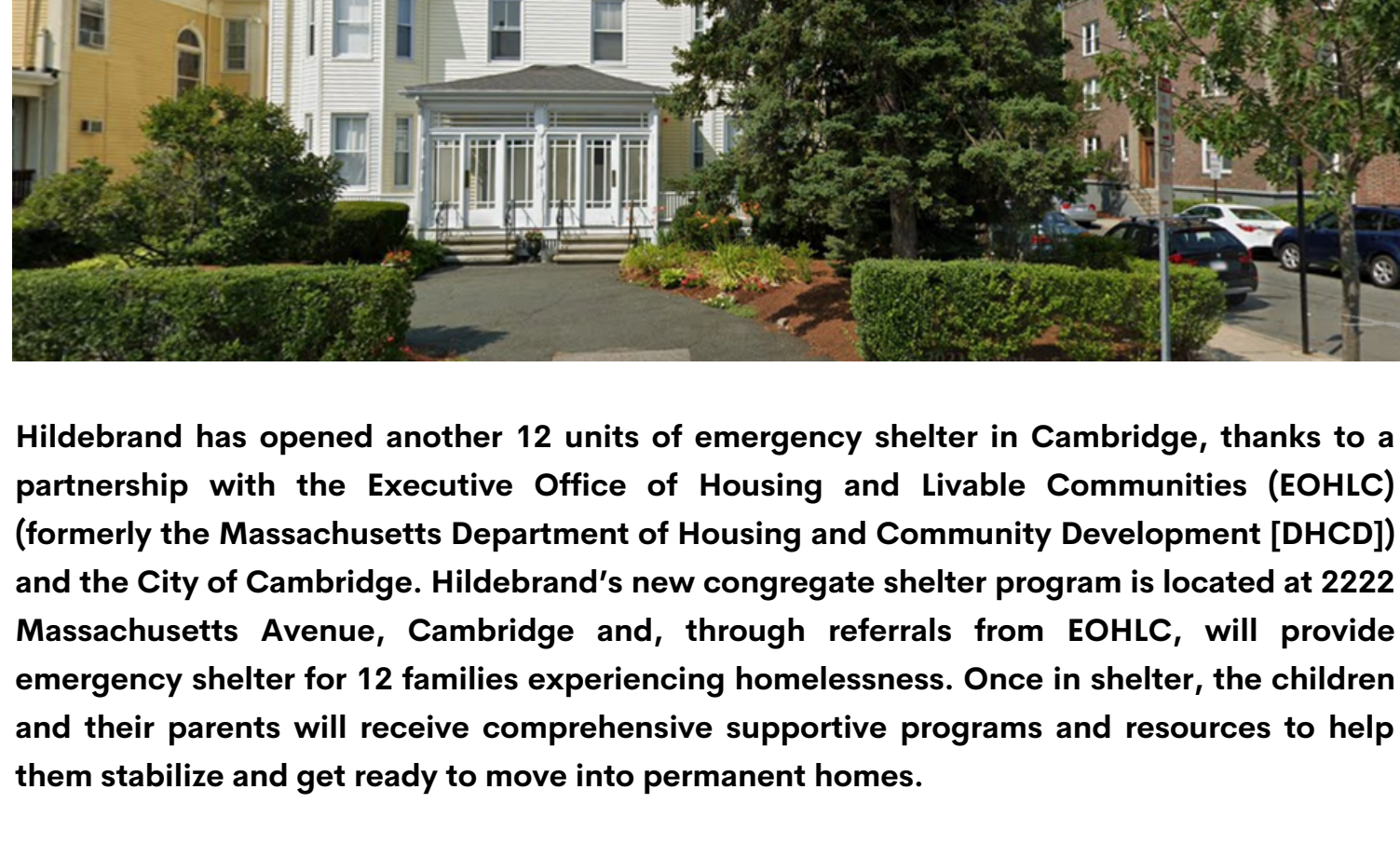
June is a busy month that calls us to reflect, connect, celebrate milestones, and life itself. We become a bit more introspective because the season marks personal triumphs and milestones. We are called to look toward the future with hope; to honor those who gave us life; and to recognize the struggle toward freedom. As families are making summer plans and children are finishing up the school year, those graduations, weddings, planning for summer vacations, Juneteenth; Father's Day and coming of the Fourth of July all converge to cause reflection, connection, and celebration.

June also marks Hildebrand's 35th year, so we reflect this month on a few of our partnerships and community connections as the theme for the newsletter. Our dynamic network includes donors, schools, Board members, students, universities, funders, other nonprofits, local elected officials, residents, and neighbors – all working together toward our vision that every family has a home. Hildebrand values the power of partnerships, connections, and collaborations, and we celebrate you!

Shiela Y. Moore

Shiela Y. Moore
CEO

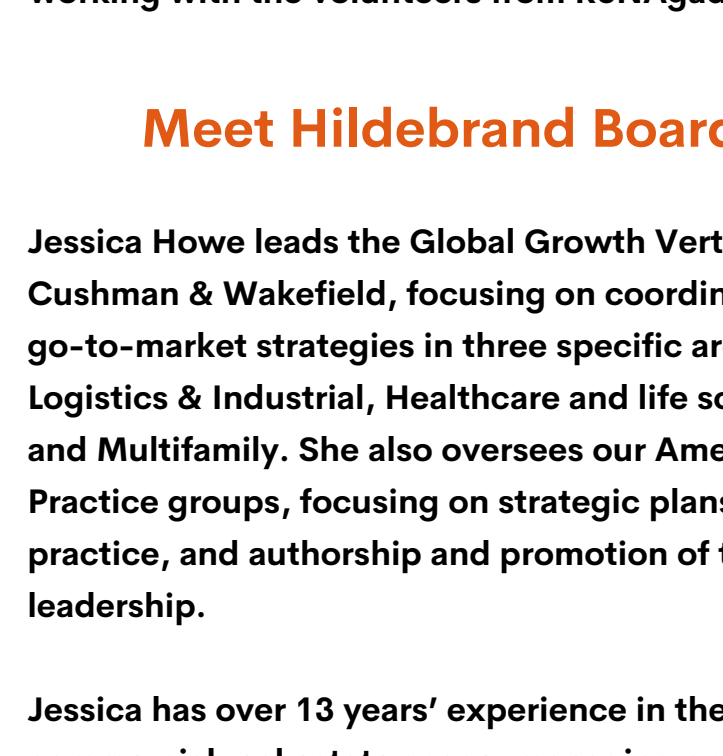
Hildebrand Has Opened a New Congregate Shelter in Cambridge!



Hildebrand has opened another 12 units of emergency shelter in Cambridge, thanks to a partnership with the Executive Office of Housing and Livable Communities (EOHLC) (formerly the Massachusetts Department of Housing and Community Development [DHCD]) and the City of Cambridge. Hildebrand's new congregare shelter program is located at 2222 Massachusetts Avenue, Cambridge and, through referrals from EOHLC, will provide emergency shelter for 12 families experiencing homelessness. Once in shelter, the children and their parents will receive comprehensive supportive programs and resources to help them stabilize and get ready to move into permanent homes.

Thirty-five years ago, Hildebrand started with only one shelter on the grounds of St. Paul AME Church in Cambridge, on Bishop Allen Drive. Years later, another congregare shelter opened on the church's property on Columbia Street. The new congregare at 2222 Massachusetts Avenue represents the first time Hildebrand has opened a congregare program in the City of Cambridge beyond the grounds of St. Paul AME Church, since our founding. It is also our largest Cambridge congregare and will represent a significant step forward for Cambridge in supporting families experiencing homelessness and immigrant communities as well. Hildebrand now has 157 units of emergency shelter.

Meet a Very Special Donor: TeQuana Bayless from ReNAGade Therapeutics

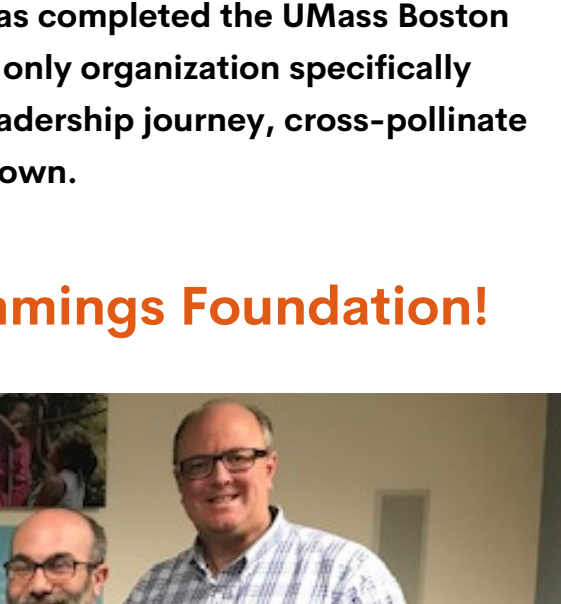


TeQuana Bayless of ReNAGade Therapeutics located in Cambridge, MA brought some special joy to Hildebrand's Holiday Season in December with a \$10,000 contribution from the company – and also a large donation of winter coats – to support Hildebrand's children and families in shelter! TeQuana is a scientist at ReNAGade Therapeutics and, as the Chair of their Fun Committee, wanted to make sure that these generous donations helped change the lives of vulnerable families in the community, which it certainly has.

As TeQuana said: "I am very passionate about giving and volunteering. I am blessed and love to be a blessing to others when I can be; I'm excited about my company helping out with funding and also with volunteers for Hildebrand in the future." We look forward to working with the volunteers from ReNAGade Therapeutics!

Meet Hildebrand Board Member: Jessica Howe

Jessica Howe leads the Global Growth Verticals for Cushman & Wakefield, focusing on coordinating the go-to-market strategies in three specific areas: Logistics & Industrial, Healthcare and life sciences, and Multifamily. She also oversees our Americas Practice groups, focusing on strategic plans, best practice, and authorship and promotion of thought leadership.



Jessica has over 13 years' experience in the commercial real estate space, managing operational and strategic initiatives. Throughout her career she has worked in multiple service lines and alongside senior leadership. She has proven success in leading company-wide projects that have created new processes to improve efficiency and increased oversight of spending.

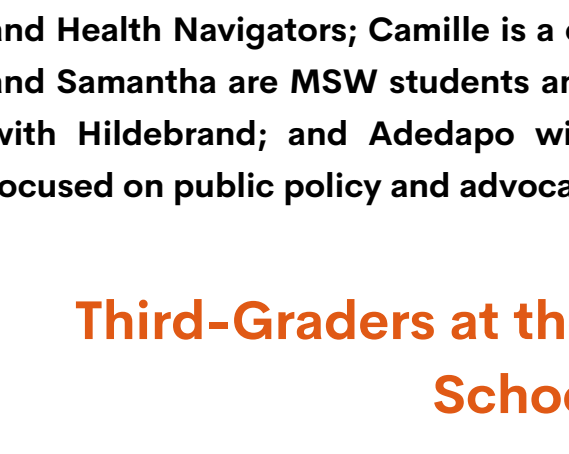
Jessica has been involved in community and national organizations such as GLOW Boston, the Greater Boston Food Bank, and Reclaim Our Vote and is a board member at Hildebrand. In 2016, she co-founded the Nate Howe Adventure Fund, which provides full scholarships for Neighborhood House Charter School (Dorchester, MA) students to participate in the school's annual overnight camp and learning trips. She has completed the UMass Boston Emerging Leaders program and is a member of Chief, the only organization specifically designed for senior women leaders to strengthen their leadership journey, cross-pollinate ideas across industries, and effect change from the top down.

A Very Special Thank You to Cummings Foundation!



Hildebrand is the proud recipient of a special grant of \$30,000 from Cummings Foundation "Make A Difference Dollars (MADS)" program. Thanks to Cummings Foundation Site Visit Volunteers, Alice Diamond and Jill Bassett! We continue to be deeply appreciative of, and continually inspired by, Cummings Foundation's partnership with Hildebrand. (From left to right, Shiela Moore, CEO; Alice Diamond; Marc Jean-Jacques, Deputy Director of Housing and Stabilization Services; Gregg Ellenberg, CPO; and Michael Hughes, CFO).

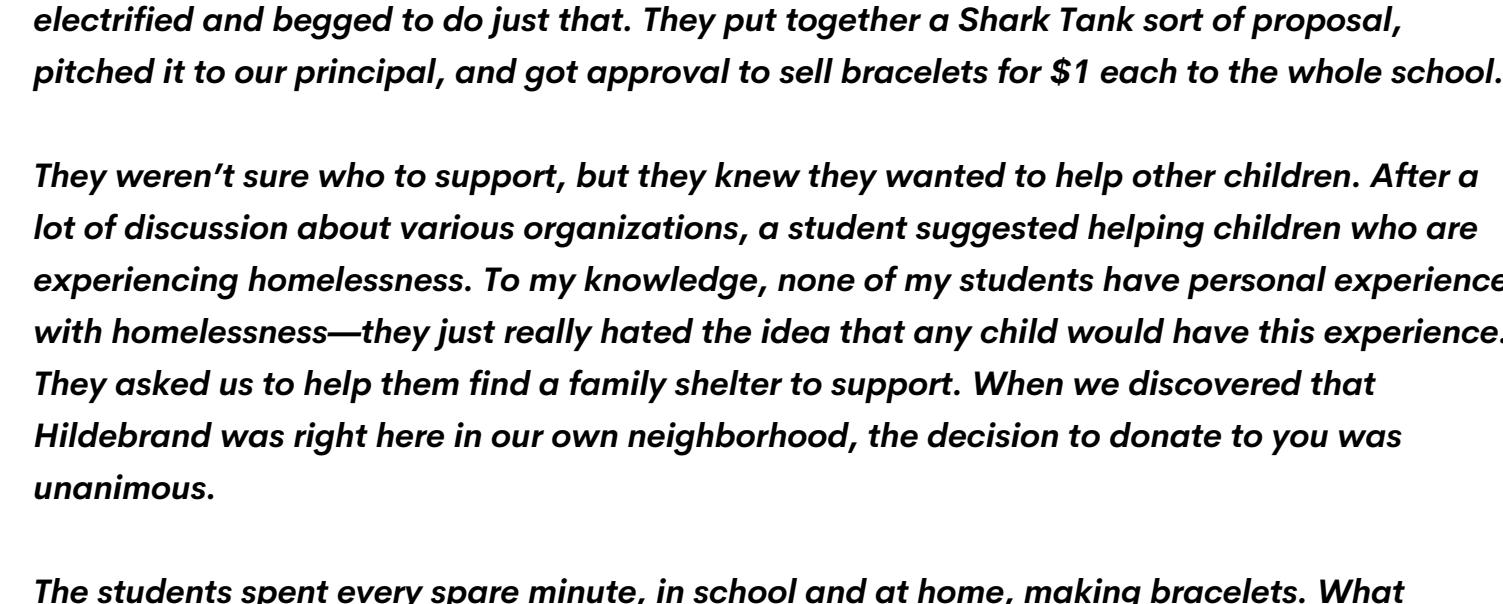
Meet a Hildebrand In-Kind Donor: Lovin' Spoonfuls



Lovin' Spoonfuls is one of Hildebrand's most important in-kind donor partners. Lovin' Spoonfuls is dedicated to facilitating the rescue and distribution of discarded, fresh food that would otherwise be discarded throughout Greater Boston, MetroWest, Worcester County, Hampden County, and beyond.

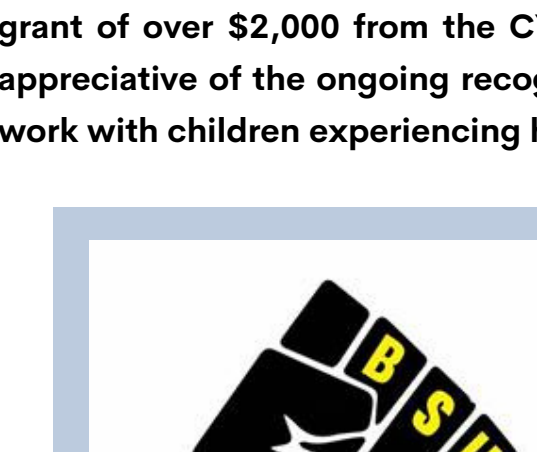
Breaking new ground in the food rescue movement, they connect community resources by linking grocery stores, wholesalers, and farms to local meal programs and social service entities serving those in need. According to a recent report from the Greater Boston Food Bank, food insecurity hit and all-time high during the pandemic and continues to rise. Lovin' Spoonfuls provides fresh food to Hildebrand every year; the food Hildebrand distributed from Lovin' Spoonfuls' rescue in 2022 was enough for 12,516 meals and had the value of \$30,038. In 2021, The food Hildebrand distributed from Lovin' Spoonfuls' rescues in 2021 was enough for 4,796 meals for neighbors facing food insecurity and had a value of \$10,672. The 2022 amounts are roughly three times as much as those in 2021, highlighting the increased need for healthy food. We are so grateful to Lovin' Spoonfuls for their ongoing commitment and partnership!

Hildebrand Has a New Cohort of Summer Interns!



Hildebrand has a new cohort of summer interns who will be supporting our youth in shelter with summer opportunities, preparing for the upcoming school year, assisting families with housing searches and applications, and working on research projects focused on health equity and also public policy and advocacy. Joining us from Colgate University are Mario Alvarado, Brett Lynott, Shakia Gittens, and Camille Goodhart; from Lesley University are Samantha Azepez and Chloe Prioetto; and a recent graduate of Northeastern University, Adedapo Keec. Mario will be Housing and Specialized intern; Brett and Shakia are Education and Health Navigators; Camille is a community health and summer access specialist; Chloe and Samantha are MSW students and will provide navigation support to families in shelter with Hildebrand; and Adedapo will be working on a comprehensive research project focused on public policy and advocacy.

Third-Graders at the Benjamin Banneker Charter School in Cambridge



A third-grade class at the Benjamin Banneker Charter Public School in Cambridge raised money to support Hildebrand – and the outreach from their teacher to Hildebrand about the donation is so inspiring! This reminds us all of the importance of instilling values of generosity, curiosity, diversity, kindness, and connection in our children – and also reminds us that Hildebrand's impact is felt throughout the entire community. Here's how it all happened, from their teacher.

"I'm a 3rd grade teacher at the Benjamin Banneker Charter Public School in Cambridge. We are raising a donation of \$550 your way (it goes in the mail today,) and I wanted to give you a little bit of back story.

My 3rd graders love to make elastic bracelets. They recently asked if they could sell them at school, just for enough money to buy new materials, but my co teacher and I explained that we only sell items at school as a sort of fundraiser. At the word fundraiser, they were electrified and begged to do just that. They put together a Shark Tank sort of proposal, pitched it to our principal, and got approval to sell bracelets for \$1 each to the whole school.

They weren't sure who to support, but they knew they wanted to help other children. After a lot of discussion about various organizations, a student suggested helping children who are experiencing homelessness. To my knowledge, none of my students have personal experience with homelessness—they just really hated the idea that any child would have this experience. They asked us to help them find a family shelter to support. When we discovered that Hildebrand was right here in our own neighborhood, the decision to donate to you was unanimous.

The students spent every spare minute, in school and at home, making bracelets. What started with 6 children blossomed into 19 students. They taught each other different styles. They brought in beads to add flare, and another student donated some little packages with hand-written notes saying "Thank you for your support!" They advertised around school, gave up their recess to sell to other grades, and even sold bracelets at their after school programs or their parents' workplaces.

After just 3 days of sales, the students sold over 500 bracelets. Your organization inspired my students to come together as a team in a way I haven't seen in my ten years of teaching. I'm so grateful for the work you do in our community, but I hope you know that your influence extends beyond the families you support directly."

Cambridge Rindge and Latin Black Students Union/Cambridge Youth Council

The Cambridge Youth Council (CYC) and Cambridge Rindge and Latin Black Students Union (BSU) held their 3rd Annual Dr. Martin Luther King Jr. Fundraiser in February, and the Cambridge Community Foundation generously agreed to match donations up to \$5,000. The money raised went to seven local organizations that support youth in Cambridge and Hildebrand was one of those organizations! Hildebrand was deeply honored to receive a grant of over \$2,000 from the CYC, BSU, and Cambridge Community Foundation and so appreciative of the ongoing recognition and support from the community for Hildebrand's work with children experiencing homelessness.

