

2017 Meyerhoff Fellows

Adele G. Croft is the Financial Aid Case Manager at JFS Houston where she has worked since 2013. She holds a degree from the University of Texas where she majored in Humanities with a concentration in Psychology and History



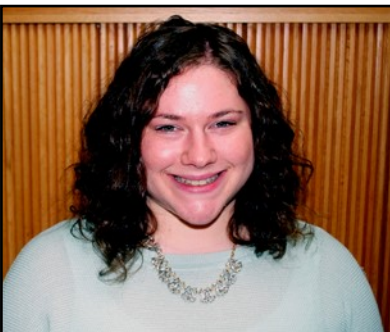
Adele manages the community sponsored Promise of Hope funds delicately balancing the restrictions of the fund with the needs of the families she serves. She coaches her clients to economic stability while providing a bridge through difficult times. Through her connections with the broader community she meets with individuals (487 in 2016) of all ages seeking financial assistance and resources. Adele reviews, assesses, and determines level of financial assistance based on circumstances and JFS guidelines. She also creates case management plans and provides resources and referrals, and assist with applying for government benefits. Her work with clients is focused on maintaining accountability with the goal of self-sufficiency while building community collaborations to provide range of necessary services to clients (medical, legal, residential, financial and educational). She also manages student loan and scholarship application process, selection, and follow-up process for two scholarships and student loans, coordinates and plans 9 financial literacy workshops and one college workshop per year for clients and the general community.

Alicia Rose is a Geriatric Care Manager at JFS Detroit. She holds a Masters of Social Work degree from University of Wisconsin, a Bachelor of Arts from University of Massachusetts.



Alicia provides compassionate case management, Medicare/Medicaid counseling services to older adults in the community, supervises Older Adult Service team programmatically and as case supervisor to 350+ active service recipients. She provides weekly clinical supervision for Limited Licensed Master's Social Workers working towards independent licensure, serves as Field Instructor for University of Michigan's Master of Social Work and Geriatric Scholar graduate programs, and develops and implements training protocols for scope of service, best practice, and enabling technologies. Additionally, Alicia works on refining system design methods to unify workflow, increase service delivery units and improve outcomes upon discharge.

Erica Solomon is the Donor Services & Development Associate, Young Adult Engagement (NextGen) at JFCS Minneapolis. She is a graduate of Macalester College and holds a Bachelor of Arts in English Literature (and a Minor in Religious Studies). Erica cultivates and engages young adults for volunteering, leadership, and philanthropy through face-to-face meetings, oral and written communication, and planning and executing social and professional meetings. She also manages the NextGen (young adult leadership) Board, provides support for committee work, creates materials for all NextGen Board meetings, and meeting regularly with NextGen Board members and President. Erica sets goals and strategies for the NextGen Gives Campaign, including drafting solicitations, managing prospect list, and implementing NextGen Giving Circle meetings and provides support for annual campaign mailings, data and gift entry, and Benefit ticket sales/seating.





Irene Sachi is the Development Associate at the JCS South Florida. She holds a Bachelor of Arts in Secondary Social Science Education from Florida Atlantic University. Among her many duties are fundraising for Domestic Abuse Prevention Program and the organization's Senior Adult Nutrition Program, supervising staff maintaining JCS' donor/fundraising database, and community outreach and donor relations. Prior to her current position, she was the Campaign Associate at JCS where she was Middle School Engagement Coordinator working with the Jewish Federation in West Palm Beach. Her duties included: Responsibility for creating programs geared towards middle school teens, being in charge of The Middle School Leadership Council, and being the Link between Jewish Federation and other middle school community programs.



Jenny Lange is the Director of the National Partnership for Community Training (NPCT) at Gulf Coast JFCS' federally funded national technical assistance program in refugee mental health. She is a social worker by training and has her Master's Degree in Social Work. This is her first position as a Director, having been promoted from Program Coordinator in November 2016. She supervises 2 full time staff and several dozen contractors who provide subject matter expertise and training to our 3000+ partners.



Jenny Daniel is the Employment Coordinator in the Refugee Resettlement and Immigration Services Department at JFS San Diego. She coordinates the employment programs. Born and raised in Mexico City with over 5 years' experience working with both refugee and immigrant populations, Jenny has a strong knowledge of the barriers these populations face in kick starting their future in the United States. She has shown great dedication to providing quality services to refugee clients by constantly working to use the existing resources to meet the individual needs of the clients. She has led her team to consistently achieve the employment goals set forth by the contract. Jenny is also always looking for ways to enhance the career development component of our employment programs, which would give refugee clients the tools to outline meaningful career paths toward their goal of self-sufficiency. Jenny has a passion for the work she does and shows great interest not only to grow in her role but be part of the program policy making to ensure that programs are built based on realistic outcomes and client oriented goals.



Jillian Whittier, LCSW, works as the Home Care Services Coordinator in the Jay and Rose Phillips Family Foundation Senior Solutions Center at JFS Colorado. Jillian received a Master's Degree in Social Work from Colorado State University in 2012 where she also completed the Hartford Partnership Program for Aging Education. Jillian began working as a Care Manager with JFS of Colorado in 2012. In her role as Home Care Services Coordinator, Jillian works to ensure that older adults in the Denver community receive high-quality in-home services that assist them in maintaining independence as they age.



Jonathan Beer, LCSW, is currently working as a Geriatric Case Manager at Ruth & Norman Rales Jewish Family Services in Boca Raton, FL. Growing up in Israel, Jonathan served 3 years as a combat soldier and medic in the Israeli Defense Force. He graduated with a BA in Behavioral Science from the Ruppin Academic Center. He continued his studies, acquiring an MA in Gerontology from the University of Haifa, confirming his passion for working with older adults with his thesis, "The Coping of Older Persons with Stress Involved in the Use of Self-Service Technologies." Realizing he enjoyed working with the elderly, he opted to pursue a Master of Social Work in Florida Atlantic University that would offer him more opportunities to work one-on-one with people. Following graduation Jonathan worked at the Hanley center's older adult recovery program. When the opportunity to work with Holocaust survivors arose, Jonathan a grandson of 4 Holocaust survivors realized he was given a wonderful opportunity to work within the Jewish community in a very meaningful way while also advancing his career goals.



Limor Schwartz was born and raised in Israel. She came to North Carolina as a Shlichah to Camp JCC in Raleigh about 15 years ago and fell in love with community service. She attained her Master's of Social Work from The University of North Carolina in Chapel Hill in 2010, and joined Raleigh-Cary Jewish Family Services in 2014 as the Director of Clinical & Social Services. Along with overseeing and developing the clinical and social services and supervising the clinical staff, she provides sliding-scale counseling and therapy, case management, and administers financial aid and the Jewish Educational Loan Fund for the Raleigh-Cary community. Limor continues to be involved in the Jewish community by taking volunteer roles in her synagogue and children's preschool. She lives in Raleigh with her husband and two daughters.



Liz Coleclough is the Director of Counseling and Project DVORA (domestic violence advocacy program) at Jewish Family Service of Seattle. She has her PhD in Public Health and a Master Degree in Social Work. She began her career in Zimbabwe as an outreach worker with an orphan vulnerable child program in a community farming community. On returning to the US, she started an AIDS walk in Jackson, Mississippi, with a goal to raise HIV awareness and funding in the state, while supporting the outreach programming in Zimbabwe. Within her PhD, she pivoted to focus more directly on trauma. In Zimbabwe, she had encountered several instances of domestic violence and sexual assault/exploitation. She continued witnessing this trend across her work with girls in the Maryland juvenile justice system and with women experiencing homelessness. This motivated her to concentrate on gender-based violence as a principle, though often invisible public health concern. She came to JFS originally directing the DV advocacy program. This eventually expanded into managing both the DV advocacy and counseling teams. Liz brings to her work a focus on engaging impacted individuals, families, and communities in a manner sensitive to their trauma, while emphasizing opportunities for resilience.



Rashki Osina is a Licensed Master Social Worker who works at Jewish Family Service at the Memphis Jewish Community Center as the Primary Therapist. Rashki provides clinical therapy and supportive services to individuals, families and couples in numerous areas. Rashki offers case management services for the Memphis area Holocaust Survivors and assists Survivors in applying for compensation and restitution funds from appropriate agencies. Rashki facilitates a monthly socialization get together, “Cake, Coffee and Conversation”, for Holocaust Survivors. Rashki creates and implements new programs such as a Peer Helpers program in the local Jewish high school and a student support program in the middle school. Rashki also supervises University of Memphis’ Masters Social Work students during their internship process. Rashki previously worked for Parkwood Behavioral Health Systems, where she spent 3 years working with adolescents in inpatient and residential treatment programs. Rashki, a native of Chicago, has lived in Memphis since 2009. She received her Bachelor of Arts in Psychology and Judaic Studies at Hebrew Theological College in Chicago, and a Masters in Social Work at University of Tennessee in Memphis. Rashki is married to Zachary Kaplan, a lifelong Memphian, and they have one son, Sammy (4). Both Rashki and Zac are active in the Memphis Jewish community.