

HEADWAY

MULTIDIMENSIONAL FAMILY INTERVENTION FOR
FINANCIAL AUTONOMY • HEALTHY DYNAMICS • EMPOWERMENT



CHALLENGE

A GROWING CHALLENGE: WORKING-POOR FAMILIES

Over the last decade, the number of working-poor families has increased worldwide. They include single-parent families, immigrants, survivors of domestic violence, large families and more. They may be employed in low-wage jobs or only part-time. And now, in the wake of the Covid crisis, the financial state of many of these families has deteriorated further. These growing economic gaps can lead to abuse, cycles of poverty and social unrest.



NEED

WE CAN DO BETTER FOR THE FAMILIES WE SERVE

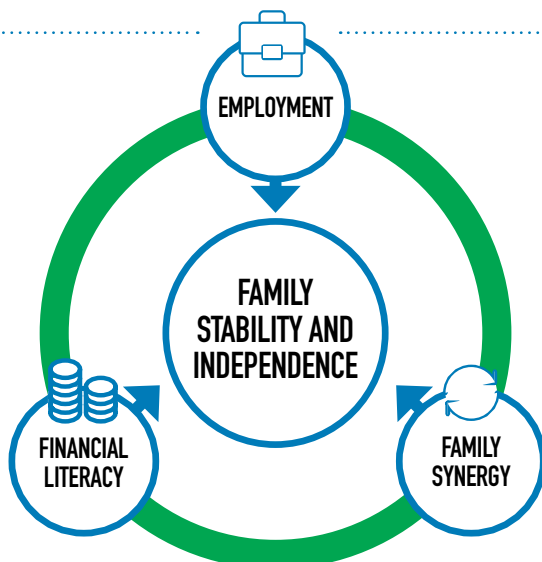
Most social welfare systems have limited capacity to provide each family with specialized attention, and many working-poor families have a hard time accessing government benefits. Additionally, most poverty-alleviation programs address each symptom individually, without noticing the needs of the family as a whole. Poverty is multidimensional and requires a holistic approach that addresses families' legal, financial, social and intergenerational issues..



SOLUTION

HOW WE MAKE HEADWAY

In our flagship program, "Headway," families are empowered to reach self-sufficiency. Each has a case manager who creates a tailored program for each household that includes family counseling, financial management, improved employment and improved income potential. Based on the family's individual needs, he or she refers them to parenting mentors, career guidance and tools to access government resources until they can stand on their own feet.



"The ultimate goal is to help each individual and family to lead and manage their lives independently."

THE HEADWAY MODEL

A case manager guides each family through every step of the program in a one-stop-shop process:



Assess the needs of the family



Integrate all existing social services to address the unique needs of each family member.



Collaborate with the family to implement changes



Guide and empower them to rise above poverty and violence

"GOING SOMEWHERE TO HAVE YOUR PROBLEMS FIXED FOR YOU MAKES YOU STUCK. WHEN YOU ARE TAUGHT TO FIX YOUR OWN PROBLEMS, YOU ACTUALLY MAKE HEADWAY."

Headway was founded eight years ago in Israel, and has scaled to over 60 cities there. In 2018, the model was adopted by the Israeli government. Now, we are expanding our international outreach so more families can benefit from this unique model

95% of abused women in our tailored program for survivors of domestic violence now live independently.

55% of the participating families have increased their income by at least 20%.

67% of the participating families were able to reduce the gap between their income and expenses, and achieved economic security.

55% of those unemployed at the start of the program were employed by the end.

Headway was developed by Yedidut Toronto (YT), an Israeli nonprofit organization that identifies unmet social welfare needs and creates effective, cost-efficient intervention models that empower people to become self-sufficient.

For more information please contact
Gila Ashkenazy
International Relations Manager
headway@ff-yt.org