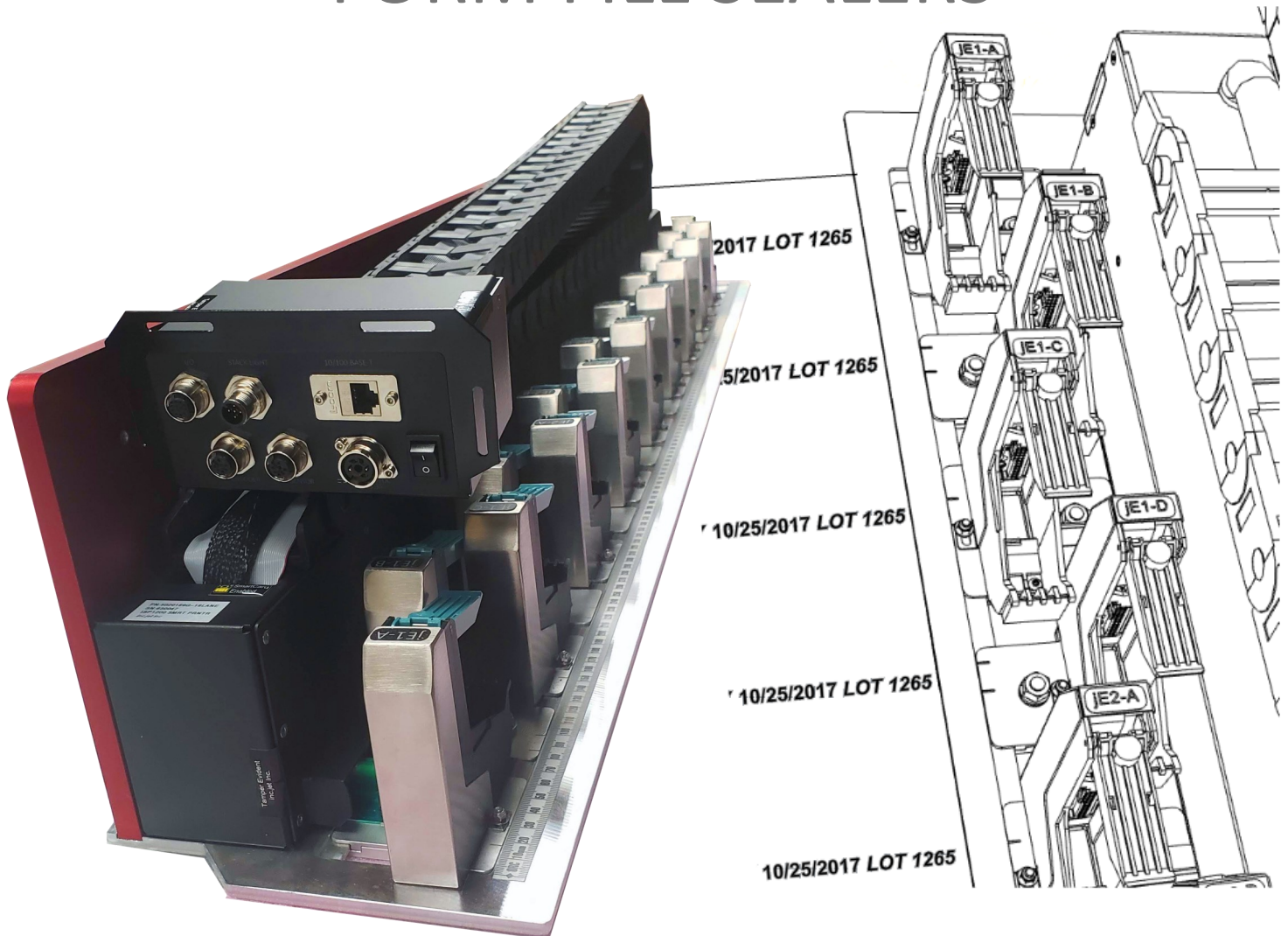




# iSP—PRINT SOLUTIONS FOR FORM FILL SEALERS



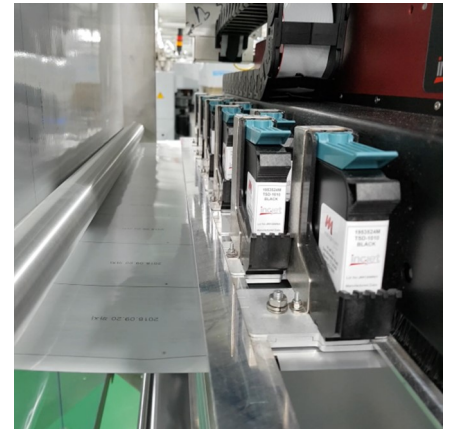
- No traversing or ribbons to deal with
- Lowest cost solution available
- Millions of prints before cartridge change
- Expandable design – 1 to 20 lanes
- Fits new and retrofit FFS machinery

# Simple and Solid Printer Integration

The high resolution iSP printers from Norwix provide a versatile and cost-effective, coding and marking solution for Vertical Form and Fill Sealers (VFFS). The units can be bolted into almost any VFFS machine with very little effort.

With no unreliable and expensive shuttling system, no complex ribbons to change and with a small footprint, a modular design and with no moving parts to consider, this print solution gives maximum uptime with almost no maintenance and comes with a true Lifetime Warranty on all parts.

Available in 4 to 20 lanes, and designed to integrate into 600mm, 800mm, 1000mm and 1200 film widths, the iSP is the best and most cost-effective method for coding and marking on Form Fill Sealers.



## Replaces all Other Printers

If you have used other print technologies, then you know how costly it can get. Why pay more when you can get better throughput, zero maintenance, simple installation and guaranteed performance with a Lifetime Warranty.

- **CIJ—No shuttling heads, no mess, no smell.**
- **TTO—No ribbons, no replacing of print heads**
- **Laser—No high upfront hardware costs, no extraction systems**



*From 4 lanes to 20 lanes*



*Rapid Replacement of Cartridges*



*Access to iSP via slide mount*

## Better Throughput / Better ROI

The print system can be running in a matter of seconds with the minimum of user intervention, always ensuring maximum productivity. With TIJ based print heads from Norwix, you use only the ink you print.

- **Maximum uptime, zero downtime**
- **No maintenance costs**
- **Reduced consumable costs**

## Simple Integration

Installing an iSP into a new build or retrofit is a matter of providing a mounting plate for the slides to affix. Often the existing film path can be used with no additional rollers required.

- **Upgrade simply with minimal engineering**
- **Slide mount allows for external cartridge access**
- **Ideal for New-Build or Retrofit**



*Easy integration into existing equipment*

# One Solution for all FFS Applications

## Energy Chain

Carries power and printer signals to the printhead for a lifetime of use

## Slider Mount

Enables entire print head assembly to be moved away from the print area to load cartridges

## Connectivity Panel

Encoder, Print Trigger, I/O, Ethernet

## Printheads

Ability to load as many printheads as required for the specific application

## Ski

Adjust print head placement simply and quickly to suit your specific application

Model	Max Foil Width	No. of Lanes Supported	Unit Size
iSP600	600mm	4 to 10	686mm x 210mm x 191mm
iSP800	800mm	8 to 12	866mm x 210mm x 191mm
iSP1000	1000mm	9 to 14	996mm x 210mm x 191mm
iSP1200	1200mm	13 to 20	1270mm x 210mm x 191mm

Horizontal Resolution	Max Speed	
	m/min	ft/min
600 dpi	46	150
300 dpi	76	250
150 dpi	152	500


- Minimum print width: 54.0mm
- Maximum Print height 12.7mm
- Maximum No. of Lanes 20

Space requirements for installation



# Ink Usage Estimates

The following gives an estimate of the number of prints you can expect from a single cartridge, based on what you are printing. For more information, contact your Norwix sales representative.

Font size	Example	Print Resolution	No images per cartridge
9 pt	JAN 07 2021 08:15	300 x 300	580,000
10 pt	LOT 66G7 EXP 07 JAN 2021	300 x 300	260,000
12 pt	USE BY 07 JAN 2021 7D 5766	300 x 300	185,000
18 pt	JAN 07 21 H7788857	300 x 300	104,000
32 pt	01/07/21 08:15 A	300 x 300	52,000
N/A	 (01) 012345678901231 (10) HJS649 (17) 28 02 2015 (21) 923Z845Y716W	300 x 300	73,000

## Lifetime Warranty

A guarantee of reliability is what your business needs today. And a company to stand behind its words.

Norwix does just this by offering a genuine Lifetime Warranty on its hardware. If there is ever a problem, we will replace it free of charges for the Lifetime of that product whether 1 year or 20 years from now.

