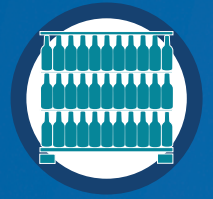




**A-B-C PACKAGING  
MACHINE CORPORATION**



DEPALLETIZING



## Model 108 Depalletizer

The simplicity of low level operation and the flexibility of low or high level container discharge

- Features to ensure container stability
- Run different containers interchangeably
- Quality production features for top reliability

# The bulk depalletizer that gives you more



## Only A-B-C builds these production-proven features into every standard depalletizer

### Quality production features

Efficient design and quality production features ensure high volume, reliable operation:

- Channel steel frame with welded and bolted construction eliminates vibration, ensuring long machine life
- 1-1/4" solid shafts on pallet conveyor and sweep bar drive units
- 1-1/2" shaft on elevator carriage drive
- Heavy duty industrial roller chain carries elevator table
- Precision chain and sprocket sweep mechanism provides long-term reliability, proven in hundreds of installations worldwide
- The elevator table is guided by 8-point location roller bearings and is counterweighted for smooth vertical operation

### Features to ensure peak performance

- Diagnostic control center with color touchscreen display
- Ability to handle glass, metal and plastic containers interchangeably - no options required
- 110" maximum load height capability

### Features to ensure optimum container stability

- Layer stabilizing mechanism squares the primary and secondary layers before sweep-off
- Four side container control with control setting front support bar during sweep-off
- Product dependent containment via encoder on sweep support bars
- Four side tier sheet containment with friction plates and tier sheet grippers to eliminate tier sheet movement and downed containers
- Variable frequency motor drives provide soft start, soft stop operation

### Total flexibility for your changing requirements

Glass, metal, plastic and composite containers run interchangeably, with no special options or change parts required. This exclusive feature gives you flexibility to adapt for varying market requirements and seasonal production demands.



*Upon viewing this depalletizer in operation, many remark on the harmonious operation and low level design. Yet it takes a closer inspection to detect the details that are essential to achieving superior performance when depalletizing hundred-thousands of containers each day.*

*It's these exclusive features that make the difference in the efficiency of your operation. Look for the layer stabilizing mechanism that squares both the primary and secondary layers before sweep off. Four side container control with control setting front support bar to minimize downed containers. Complete tier sheet containment to eliminate*

*layer shifting. Tier sheet grippers to accommodate varying load weights. And much more.*

*We include these features as standard equipment on every A-B-C depalletizer. Because we believe that the performance of your line should be based on the efficiency of your equipment, not how many options your budget allows.*

*Our customer support includes technical service, spare parts, operator training, and our commitment to customer satisfaction...making A-B-C depalletizers the reliable choice for all your bottle and container handling requirements.*



#### **Primary and secondary layers are squared before transfer**

As the primary layer is swept from the pallet, the secondary layer is held on all four sides by pneumatically controlled steel friction plates.



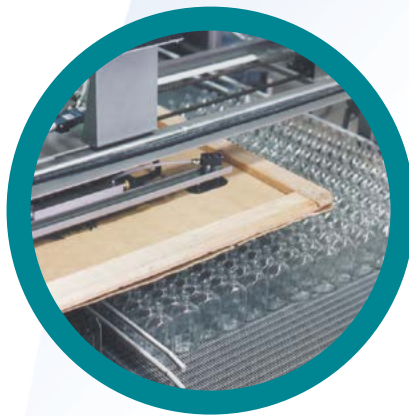
#### **Friction plate plus tier sheet grippers stabilize the second layer**

During sweep off, the tier sheet is held securely by grippers from the rear. The sweep carriage has four containment devices: two adjustable side plates, a rear sweep bar and a front support bar.



#### **Elimination of 'sweep off gap' keeps bottles stable**

During sweep off, friction between the container bases and the bottom tier sheet can push the layer toward the rear sweep bar causing container instability. The adjustable support bar eliminates this action and ensures full containment throughout transfer. The sweep and support bars are operated by independent, frequency-controlled motors and encoders.



#### **Automatic picture frame and slipsheet removal and stacking**



#### **Empty pallet stacker handles all styles-easy removal by lift truck**

#### **Choose your level of automation**

Optional features include:

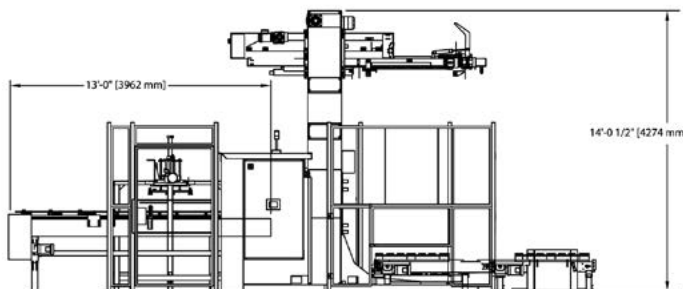
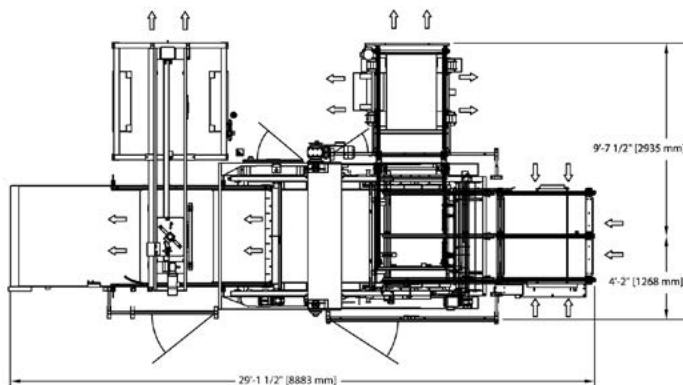
- Picture frame, slipsheet removal and stacking
- Empty pallet removal/stacking - handles all styles of pallets- 1,500 lb. capacity
- Auxiliary full pallet conveyor - automatically feeds loaded pallets for depalletizing
- Roller style or chain style pallet conveyor
- Container single filer
- Lean detector to identify severely shifted palletloads

# Model 108 Bulk Container Depalletizer



## Here's how it works:

1. Full pallet load, with film wrap and bands removed, is fed by powered conveyor into the depalletizing station.
2. The bottle elevator table moves to the top tier of the pallet load. The lower tier sheet is secured. The top layer, top tier sheet and frame are swept onto the elevator table.
3. The elevator table moves to the level of the discharge table. The containers are swept onto the discharge table.
4. The discharge table is controlled to pause momentarily while the tier sheet is removed and stacked in a hopper. Containers are channeled off the discharge table.



## Economical floor level operation

Floor level operation keeps your costs down. Installation requires no additional overhead platforms or equipment. Maintenance is simplified with clean, open construction and easy to reach access points. Your plant personnel are able to monitor machine operation while performing other tasks.

## Made in America

Over ninety percent of the machine components in A-B-C machines are crafted in our own manufacturing plant. It is our tradition of quality and craftsmanship that has made A-B-C a leader in packaging machinery manufacture since 1940.

## Quality features for a better machine:

- Mechanical primary and secondary layer squaring before sweep-off
- Electro-mechanical dual chain-driven sweep bar
- Automatic container height detector
- Four side containment devices on sweep carriage: adjustable side plates, rear sweep bar and front stabilizer bar
- Stainless steel, reinforced transfer table with tapered stripper plate
- Counterweighted elevator table
- Adjustable guide rails on elevator table
- Low maintenance design
- Color touchscreen control panel
- Programmable logic control
- IEC motor starters
- Quick disconnect non-contact sensing devices with LED indicators
- Variable frequency motor drives
- Full machine guarding

## Optional features:

- Picture frame and slipsheet remover/ stacker
- Empty pallet stacker
- Powered full pallet feed

All information in this brochure was current at time of printing, however, in the continuing effort to improve the quality and construction of A-B-C machines, we reserve the right to make changes without notice. Guards may be opened or removed for photos shown.

C-138-12/17



**A-B-C PACKAGING  
MACHINE CORPORATION**



ERECTORS



PACKERS



SEALERS



PARTITIONERS



PALLETIZERS



DEPALLETIZERS



DECASERS

811 Live Oak Street, Tarpon Springs, FL 34689 • 727-937-5144 • Fax 727-938-1239 • [www.abcpackaging.com](http://www.abcpackaging.com)