

THE ARTISAN SOUL

CREATING YOUR LIFE
INTO A WORK OF ART



CORONAVIRUS UPDATE

How we will be the Church in response to coronavirus restrictions.

Amidst concerns surrounding coronavirus (COVID-19), we want to let you know how St. Luke is responding. As information evolves, this page is the primary place for you to receive answers to commonly asked questions. We are committed to doing everything we can to provide a safe environment for our church family and surrounding community.

If you are wondering or if someone were to ask you why our church is responding to this health concern in this way, here is the response that we offer:

- We are loving our neighbors by protecting our neighbors and respecting their concerns.
- Living more for others than ourselves, this is what love requires of us in this season.
- We are not being fearful. We are being responsible.

WHAT'S INSIDE THIS ISSUE:

- What is canceled? - 2
- What is new? - 2
- Is the church building open? - 2
- How will we stay connected? - 3
- What about summer programs? - 3
- How can we care for the congregation? - 4
- What can we do for our children? - 4
- How can we care for our community? - 5

Altar flowers this week are given in memory of Martha Burk, given by members of her life group.

Attendance for Sunday, March 15 was 234

WHAT IS CANCELED?

As of Wednesday, March 18, 2020

- On-site Sunday worship services and in person life groups
- St. Luke Kids
- St. Luke Students and Youth Group
- Wednesday night Lenten services
- Friday Men's Breakfast Bible Study - online only
- Friday Prayer Group - online only
- Meal Preparations for Star House & The Well
- Women's Bible Study – no new spring study
- Nerf & Nachos
- Gahanna Early Experience Center preschool

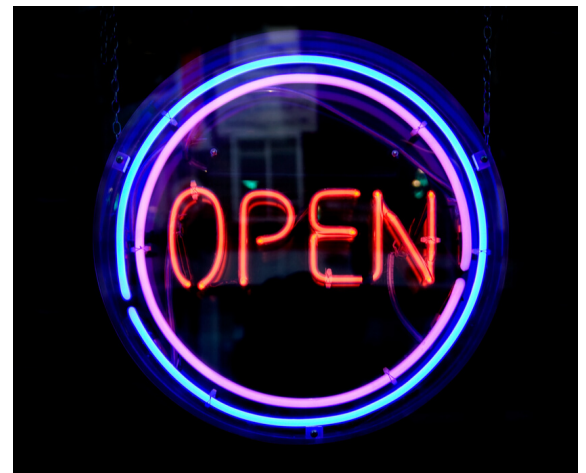
WHAT IS NEW?

Explained further below

- Our two online Sunday services and how to connect to them.
- How current life groups can continue to meet online.
- New online life groups.
- What Colleen is doing for St. Luke Kids
- What Greg is doing for students
- Monday – Friday teachings from one of the pastors
- Pastor Mike's Facebook live.
- Increased care for one another.

“

*Increased care for
one another.*



IS THE CHURCH BUILDING OPEN?

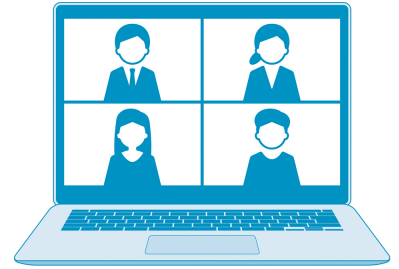
Yes. Our church office will be open Monday through Friday, 9 am - 12 pm. We will reassess as needed as our local and national leaders communicate new information daily.



HOW WILL WE STAY CONNECTED?

We will worship together online again this weekend (March 22).

We will record our traditional service in the sanctuary and have it available on demand by 9 am Sunday morning. You can download the order of worship to follow along, pick up a copy during office hours on Fridays (9 am - 12 pm), or have it mailed to you.



Our contemporary service will stream live at 11 am. Both services will be available on this website and our contemporary service will be available on our Roku channel. During each worship service, we encourage you to engage by completing connection cards, submitting prayer requests, and faithfully giving, as if you were onsite.

TRADITIONAL SERVICE

CONTEMPORARY SERVICE

All life groups are encouraged to meet online. If you are not connected to a life group at this time, we would like to provide you an online group. Please click the day/time button below that best fits your schedule and fill out the form to receive information on how to connect.

MONDAY @ 4 PM

TUESDAY @ 10 AM

WEDNESDAY @ 7 PM

Pastor Mike will use Facebook Live on our Facebook page every Thursday at 5 pm and we will also be sharing regular messages through our private Facebook group: St. Luke Community.

We invite you to follow our Facebook page at www.facebook.com/stlukecolumbus and join the group at www.facebook.com/groups/stlukecommunity.

A vibrant blue wooden plank background. At the top left is a portion of a light-colored straw hat. Next to it are a pair of bright pink flip-flops with black straps. To the right of the flip-flops are a pair of bright yellow sunglasses with black lenses. Further right is a single orange starfish. In the bottom left corner, there are several white seashells of different shapes and sizes, including a large spiral shell and a smaller star-shaped shell. In the bottom right corner, there is a small cluster of white and pink coral or sea anemone.

WHAT ABOUT SUMMER PROGRAMS?

- There are no plans to cancel student camps.
- There are no plans to cancel family camp.
- There are no plans to cancel Vacation Bible School.
- There are no plans to cancel Women's Ministry Summer Gatherings.

HOW CAN WE CARE FOR THE CONGREGATION?

If you know members of the church community who do not receive email, please call and inform them about these changes.

We are increasing our phone calls to people in the congregation in order to learn how they are doing during the health crisis. If you would like to help make these phone calls, please contact Pastor Steve (614-286-5106).

If you have a need, please fill out this form. We will do our best to respond to our congregations needs during this time of social-distancing. We plan to communicate how you can help meet these needs through our email list. **Join our email list here.**

If you have prayer concerns during this time, **please request prayer though the online form.**

Please continue to support St. Luke's ministry and mission financially. You can mail in your offering to St. Luke Lutheran Church, 4456 Morse Road, Columbus, OH 43230. You can drop off your offering at the church office, M-F, 9 am – 12 pm. You can explore giving options, including giving online, by visiting **stlukecolumbus.com/give.**

If you are in a life group, find ways to remain in contact with members of your life group. Some are using technology such as Zoon, FaceTime, WhatsApp, and others to connect with their group members and meet virtually online.

If you are not connected to a life group at this time, we would like to provide you an online group. Please click the appropriate button below and fill out the form to receive information how to connect as found on page 3.



WHAT CAN WE DO FOR OUR KIDS?

Connect with Colleen and Greg through Facebook and Instagram. Colleen will post Kids Worship each Wednesday at 4 pm on the St Luke Kids Facebook page. Greg will connect with parents and students using Zoom online meetings.

Just for Kids: A Comic Exploring The New Coronavirus - NPR



Follow our St. Luke Kids Facebook page: **www.facebook.com/stlukekidsmin/**

Join our Facebook groups:

- St. Luke Parents: **www.facebook.com/groups/stlukeparentsgroup/**
- St. Luke Student Ministries: **www.facebook.com/groups/stlukestudents/**



Follow us on Instagram:

- St Luke Kids Ministry: **www.instagram.com/stlukekidsmin/**
- St Luke Students Ministries: **www.instagram.com/stlukestudentministries/**

HOW CAN WE CARE OUR COMMUNITY?

Our non-profit partners are still active doing their best to care for vulnerable members of our city.



GRIN is collecting breakfast items at Gahanna Lincoln High School on Tuesday, March 24 from 3-7 pm.



Faith Mission is reducing meal shift to 2 volunteers. Volunteers will assist with preparation and distribution of take-out meals at the Community Kitchen (245 N. Grant Ave, Columbus, 43215). Our next volunteer date is Sunday, April 19 from 4:15 – 6:15 pm.



The Champion Avenue Food Pantry will be reducing distribution shifts to 8 volunteers. Volunteers will pre-pack produce and food orders for clients. Our next volunteer dates are Wednesday, April 1 from 9 am – 12 pm and Thursday, April 2 from 2:30 – 5 pm. You can volunteer to help Lutheran Social Services through their [online volunteer hub here.](#)



Neighborhood Bridges continues to post needs. Visit their website and subscribe to their email list for up-to-date ways you can help community members. www.neighborhoodbridges.org

“

You are not alone. This pandemic is forcing us to find new ways to be the church. Stay connected with us in worship online, stay connected with your life group, and if you don't have a life group—consider joining one of our new online groups. We're better together!