

# Castle Trek

18" sq.  
finished  
block



Page 1 of 3

\*\*\*This Junior Trekkers pattern is designed to be completed with the help of an adult sewing coach. All rotary cutting should be done by an adult.

## Materials needed for the castle block

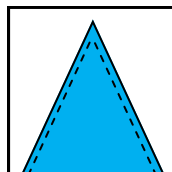
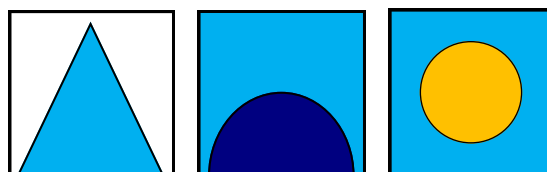
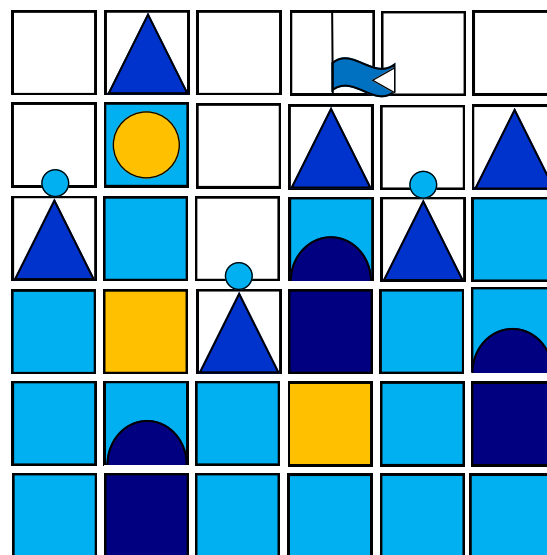
- 14 3-1/2" background squares (about one fat quarter)
- 2 2" x 3-1/2" background rectangles for flag square
- 16 3-1/2" assorted castle squares (5-8 different prints)
- 6 3-1/2" squares for steeples
- 6 3-1/2" dark squares for windows (3) and arches (3)
- 2 3-1/2" bright squares for accent windows
- 1 3-1/2" bright square for clock
- 1 3-1/2" length of ribbon for flag (about 7/8" wide)
- 3 buttons for steeple caps
- 1/4 yd paper backed fusible web plus matching thread



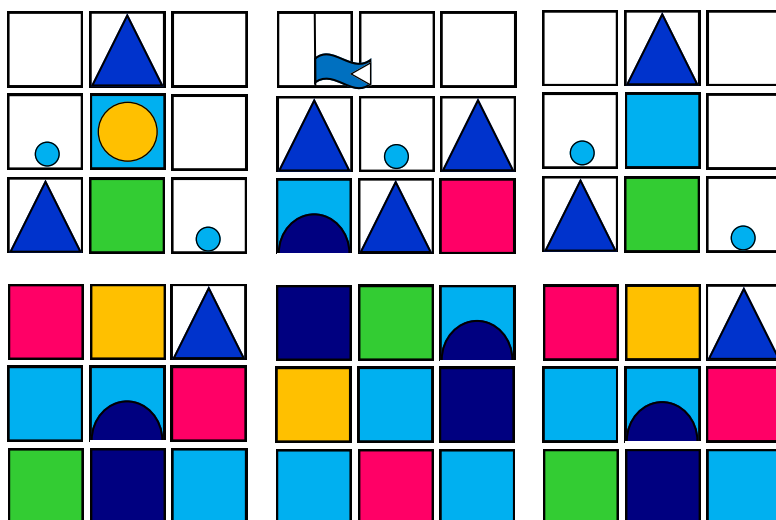
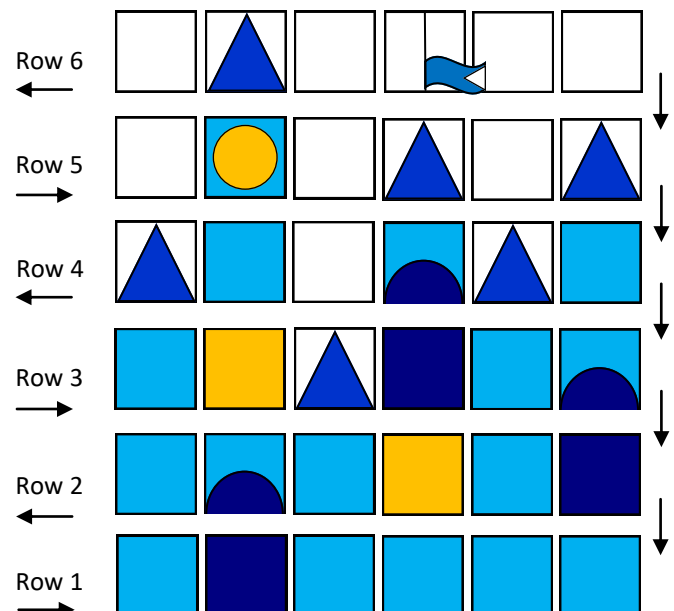
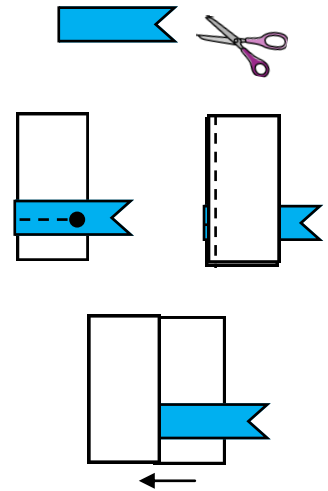
Shown finished as a 24" pillow sham with 3" borders, corner blocks, and a faux binding added to the 18" castle block.

## Assembly

1. Find the steeple, arch, and clock patterns on page 3. Trace six steeples, three arches, and one clock on the paper side of the fusible web.
2. Following the manufacturer's instructions, fuse the steeple shapes to the wrong side of the steeple squares, arches to the wrong side of dark arch squares, and the clock to the wrong side of the bright square. After fusing, cut out the shapes along the lines.
3. Layout your entire castle so you are pleased with the arrangement. Place the steeples atop the background squares. Align the arches on the castle squares above dark window squares. Add all the background squares.  
**TAKE A PHOTO OF YOUR CASTLE ARRANGEMENT.**
4. Fuse the cut steeples to the right side of the background squares centering the steeple base even with the cut edge of the background square as shown.
5. Fuse the arches to the right side of the castle squares centering the arch base even with the cut edge as shown.
6. Fuse the clock to the right side of the castle square.
7. Applique stitch the fused steeples, arches, and clock. Use matching thread and stitch about 1/8" from the edges.



1. Make the ribbon flag by "dovetailing" one end of the ribbon.
2. Lay the ribbon on the right side of a 2" x 3-1/2" background rectangle as shown with edges even on the left and about 3/8" up from bottom edge of the rectangle. Pin to hold ribbon in place.
3. Place the other 2" x 3-1/2" rectangle, right sides together, on top of the pinned ribbon rectangle. Stitch along the left edge with a quarter inch seam allowance. Using a quarter inch foot is highly recommended.
4. Flip back the top rectangle. Carefully press the block with the seam allowance in the direction of the arrow. When pressing, avoid touching the ribbon with the hot iron.
5. Using quarter inch seam allowances, sew the castle squares together in rows. Begin with Row 1. **Refer to your layout photo to be sure you are sewing the squares in the correct order.** A quarter inch foot is recommended.
6. Press all the seam allowances in each row in the direction of the arrow. Press carefully around the flag square.
7. Next, sew the rows together 'nesting' the seams. Be careful not to catch the ribbon flag in the seam when sewing Row 6. Press all the seams down.
8. Sew on the steeple point buttons.
9. **Congratulations!** Your Castle Trek is finished.



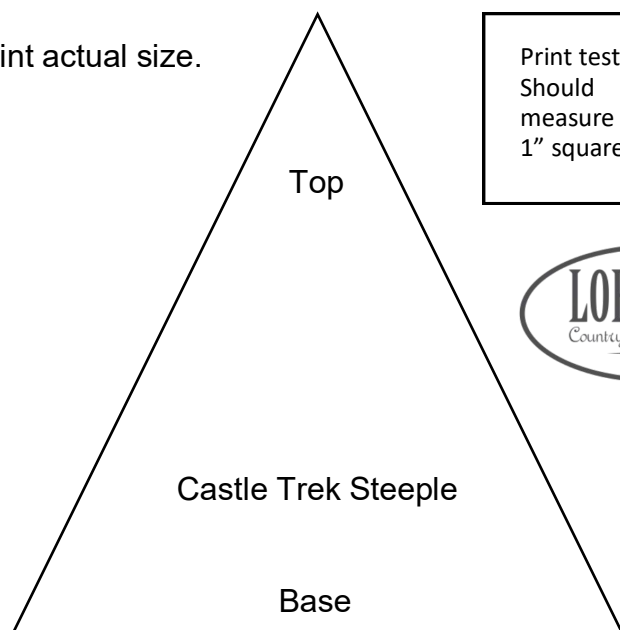
## Want to make a bigger castle?

Break your layout into four 3x3 castle square units (9" finished blocks). Make more of these units and arrange them any way you want.

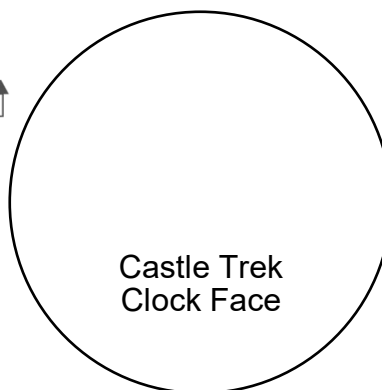
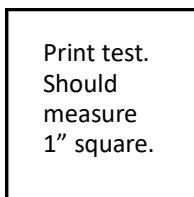
**Junior**  
TREKKERS



Print actual size.



Print test.  
Should  
measure  
1" square.



## 24" Castle Trek Pillow Sham Project

One Castle Trek Block and a 24" pillow form  
Four 3-1/2" x 18-1/2" side borders  
Four 3-1/2" squares for corner blocks  
Four 1-1/4" x WOF strips for faux binding  
Two 17-1/2 x 26" rectangles for sham back (3/4 yd)  
28" square of lightweight fusible batting

Use quarter inch seams. Add the side borders first. Join the corner blocks to the remaining border strip ends. Then sew them to the top and bottom of the castle. Add the faux binding strips to each side. Fuse the batting to the wrong side of the castle front. Trim away excess batting. Add lines of machine quilting, if desired, now.

'Clean finish' one long side of both back rectangles by pressing under 1/2" twice. Layer over the front, right sides together, overlapping to create the sham opening. Pin. Stitch together with **1/2" seam allowance** around all four outer edges. Turn and press. Stitch in the ditch through all layers to create the faux binding edge. Insert pillow form.



**Castle Trek** is inspired, with permission, by the Mary Blair style castle drawing lessons created by art teacher Stacey Peters for [ExpressiveMonkey.com](http://ExpressiveMonkey.com). Mary Blair is the Disney artist who designed the Small World ride for the 1964 World's Fair. School-aged kids will enjoy reading about Mary Blair "Disney artist extraordinaire" in the book *Pocket Full of Colors* (Guglielmo and Tourville, 2017).