

**Easier Power supply**

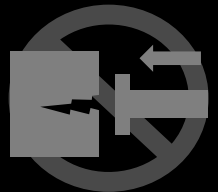


**WPT module**

## Wireless Power Transfer (WPT)

WPT is Wireless Power Transfer.  
Electricity can be transferred in Wireless.  
Compared to "Contact power supply",  
Maintenance costs can be reduced.

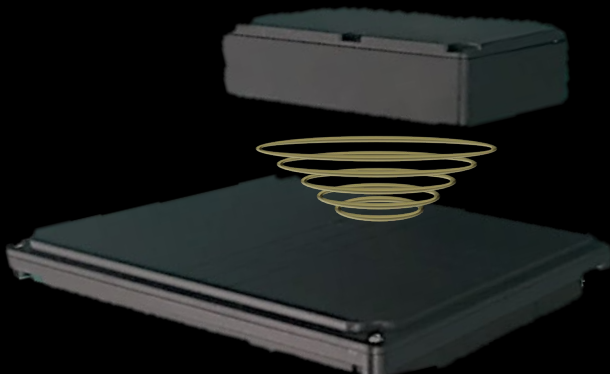
**High  
Mechanical  
Durability**



**Waterproof  
&  
Dustproof**



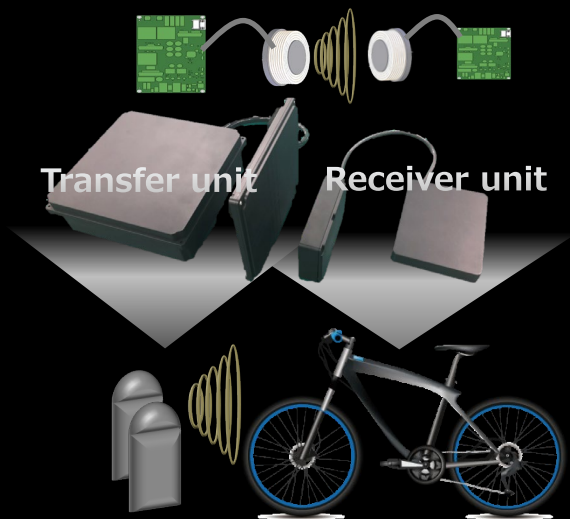
**Reduction  
of Electric  
shock risk**



**OMRON**

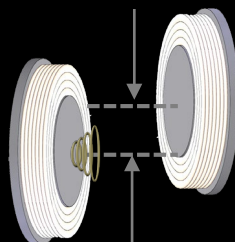
The waterproof, dustproof and electric shock prevention structure must be implemented by the customer's system.

# OMRON Wireless Power Transfer Feature

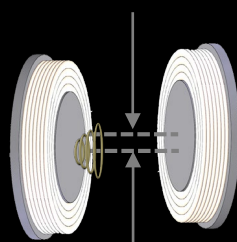


Even if shifting coil position, electricity can be transferred with high efficiency. OMRON 2nd-Resonance technology adjust to optimal frequency when the coil position shifts greatly.

**OMRON**  
: Large gap OK!

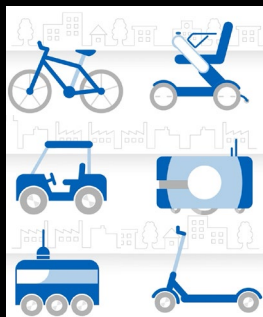


**General technology**  
: Small gap



According to OMRON's research in September 2021

## For Small mobility



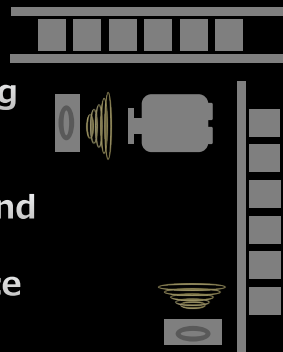
OMRON WPT (Wireless Power Transfer) module is 100W to 500W range. It is optimal for charging battery of small mobility (E-Bike, E-Scooter, AMR, AGV, Robotic Lawn Mower...)

## AMR / AGV



Omron WPT can supply power even if the coil position shifts, so battery can be easily charged.

Therefore, installing multiple stations on each line and charging each time AMR stops contributes to "no system down time" and "no extra labor cost". It is possible to reduce operating cost.

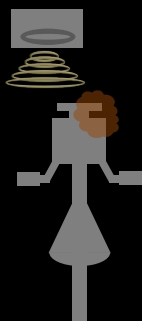


## Bike Share

Bike Share has been rapidly expanding in North America. In Bike share, E-Bike & E-Scooter is used.



## E-Bike / E-Scooter



There is the problem of high operation / maintenance cost in charging battery. OMRON WPT solution can contribute the reduction of it. OMRON WPT can charge even if position shifts and even if dirty.

## Service Robot



Robotic Lawn Mower is one of service robot. WPT can contribute easier to use it. No need cleaning, adjusting and replacing contacts.

Contact to  
kyle.alberti@omron.com

**OMRON**