

Osher Lifelong Learning Institute at the University of Southern Maine



OLLI's April 2023 Pop-Ups / Social Events

Consider joining us this month for one of these fun events.

The **Zoom Pop-ups and Social Activities** are **FREE** for **OLLI members** for the **month of April**. You must register online under the "Special Events/Pop-Ups" section in the online registration system.

NOTE: Please register no later than 2 days in advance of the event you plan to attend. This gives hosts time to get the e-mail addresses and send everyone a Zoom link.



April Social Events/Pop-Ups



Trivia Game Night (Online)

Monday, April 3 | 7:00 p.m.
Monday, April 24 | 7:00 p.m.

with Star Pelsue and Elizabeth Housewright

Use those fun facts you have stored in your gray matter. Join us for some laughs and interesting questions that will have your brain scanning your mental files for what some may call trivial information. You provide your own snacks and beverages. We provide the questions! You are one click away from an evening of good company and laughter. Make sure to mark your calendars and register for this fun time.

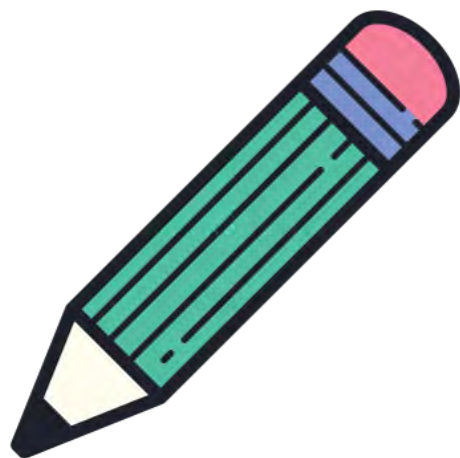
Location: Zoom

Pictionary Game "Night" (Online)

Thursday, April 6 | 3:30 p.m.
Thursday, April 27 | 3:30 p.m.

with Star Pelsue

Are you the Picasso of stick figures? Maybe your bear looks more like a mouse. You don't need to be an artist



to play this drawing game. Be prepared to laugh and enjoy yourself for the hour. This game not only entertains, but it also teaches you to use the Zoom Whiteboard feature.

Location: Zoom



Tales & Tunes of Summer Camp

Thursday, April 6 | 7:00 p.m.

with Laurie Mooney and Star Pelsue

They say the best memories are made at camp. Many of us have great stories from our camp days or songs that have stayed strong in our memories so let's gather around the "campfire" and sing a few songs and tell a few stories. The tans will fade but the memories will last forever.

Location: Zoom



Coffee Klatch

Saturday, April 8 | 9:00 a.m.
Saturday, April 22 | 9:00 a.m.

With Star Pelsue

Bring your favorite beverage and let's chat.

Location: Zoom



Tribond - The Game of 3s

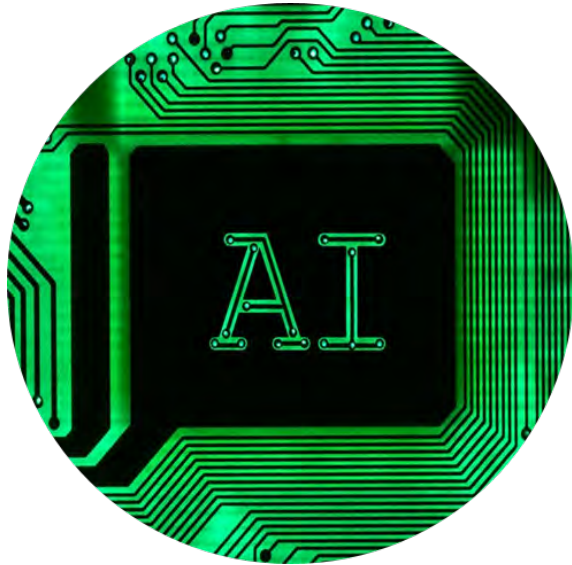
Monday, April 10 | 3:30 p.m.
Monday, April 17 | 3:30 p.m.

With Star Pelsue

Tribond plays on the similarities of three seemingly random items, people, objects, etc. If you can connect the dots between items that don't seem to be related in any way, then you're going to be a pro at the game of Tribond. What is the common bond between Instant, Hidden, and Candid? (camera)

We will be playing on teams in breakout rooms. Come join the fun.

Location: Zoom



Podcast chat: Can artificial intelligence help farmers adapt to the effects of climate change?

Tuesday, April 11 | 7:00 p.m.

With Star Pelsue

Technology experts are helping farmers, including in some of the world's poorest regions, adapt to the new food production landscape through the use of artificial intelligence, or AI, and machine learning.

Location: Zoom



Masterpiece Theater Favorites

Wednesday, April 12 | 3:30 p.m.

With Star Pelsue

Are you addicted to the Masterpiece Theater series? Do you wait all week for the latest episode of All Creatures Great and Small, Sherlock or Sanditon? Let's talk about our favorites. The characters we love as well as the ones we love to hate!

Location: Zoom



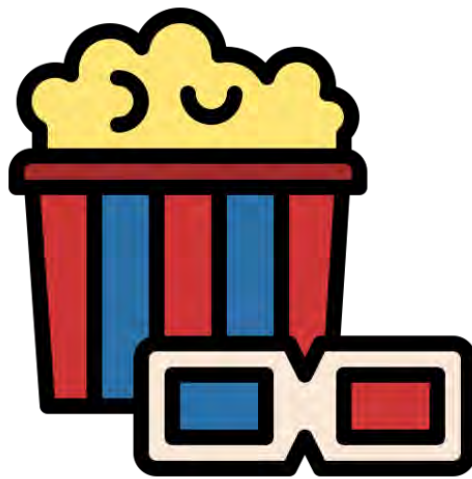
AGING: Memories

Thursday, April 13 | 7:00 p.m.

with Elizabeth Housewright

What are you doing anything to pass along your memories to family and friends? Genealogy, stories, or photos and memorabilia?

Location: Zoom



Lights, Camera, Action: Movies of 2022

Thursday, April 13 | 3:30 p.m.

with Star Pelsue

Did the Academy get it right? Which movies of last year did you enjoy? Which actors charmed you with their performance? Share your thoughts about last season's flicks

Location: Zoom

Podcast chat: Homeless in America how can we solve this issue?

Wednesday, April 19 | 7:00 p.m.

With Star Pelsue



The Biden Administration announced plans to reduce homelessness in the U.S. by 25 percent by 2025. What's the best way to address unhoused populations? And how exactly does the administration plan to reduce and prevent homelessness?

Location: Zoom

PUTTING EAT BACK IN MEAT

Thursday, April 20 | 4:30 p.m.

With Sandy Garson and Star Pelsue



Don't be turned off by horror stories of industrially farmed animals and environmental ravages. You can enjoy meat as a treat without bruising your conscience. For our food chat finale, we're joined by ethical butcher Patrick Tweedie of the popular Kennebec Meat Company in Bath which buys only Maine raised animals, sells all their parts, and advises how to cook unfamiliar ones. Learn what wagyu beef is, how Tasso is different from ordinary ham and what to do with lamb neck. Join us to learn all about great meat you can eat.

Location: Zoom



Monopoly and Beyond

Monday, April 24 | 3:30 p.m.

with Star Pelsue

Do you love board games? So many to choose from old and new. Which has stood the test of time? Let's talk about our favorites and hopefully come away with new games for us to try out.

Location: Zoom



Virtual Book Exchange (Online)

Wednesday, April 26 | 7:00 p.m.

with Anne Cass

Bibliophile? Looking for the next book to read? Join in and share a title or two. Leave with the title of the next book to add to the stack!

Location: Zoom

An Ornamental Journey



Wednesday, April 26 | 7:00 p.m.

with Donna Anderson

Spring is in the air. The snow is melting, the birds singing, and our green thumbs are itching. While we wait for the ground to thaw, we can start planning. So, let's talk ornamentals.

Location: Zoom

Free!

The Zoom Pop-ups and Social Activities are FREE for OLLI and MSCN members. You must register online under the "Special Events/Pop-Ups" section in the online registration system.

Registration

NOTE: Please register no later than 2 days in advance of the event you plan to attend. This gives hosts time to get the e-mail addresses and send everyone a Zoom link.

How to register for the free OLLI Popups:

Go to the OLLI at the University of Southern Maine registration page to register. (Select Returning Customer or New to OLLI.)

Please provide your contact details if you are new to OLLI.

Need help signing up?

Send OLLI an email olliatusm@maine.edu
Or call **207-780-4406**

OLLI at the University of Southern Maine