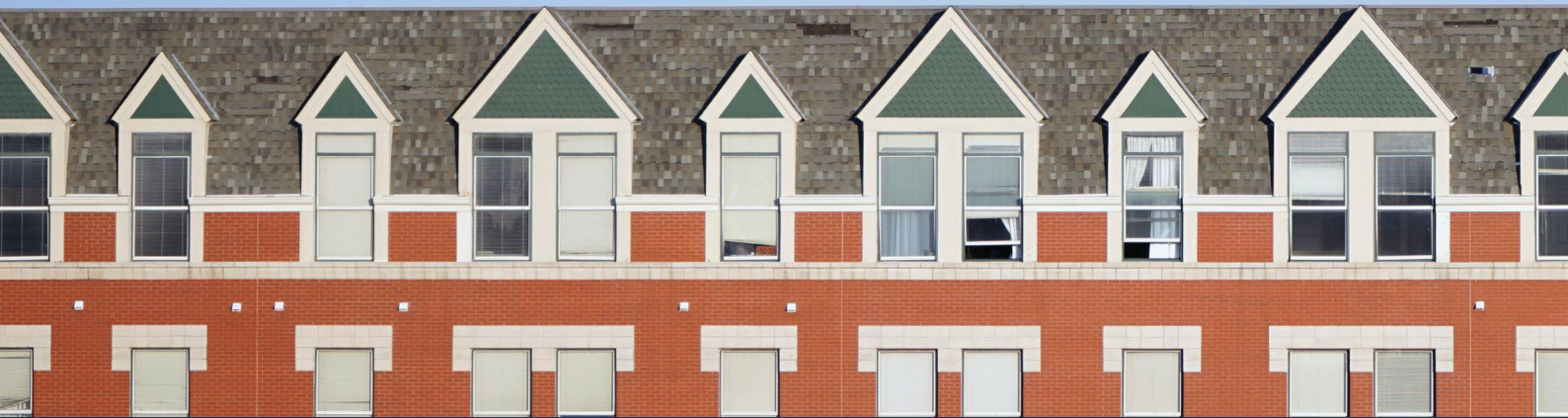


ELIGIBILITY DOCUMENTATION

- Verification that you are a resident of San Bernardino County not living in either Fontana or San Bernardino**
 - City of Fontana Residents: Please go to the State's Housing is Key website at www.housingiskey.com
 - City of San Bernardino Residents: Please go to the city of San Bernardino's website at www.sbcity.org

The documentation below will be required for ALL household members 18 years or older
- A form of identification:** Any valid government issued identification, including a driver's license, passport, permanent resident card, etc.
- A copy of the written lease or rental agreement:** A written and signed agreement between a landlord and tenant.
- Documentation of past due rent amount owed and late fees.**
- COVID-19 Financial Hardship Certification Form:** Completed form showing how you were financially impacted by COVID-19.
- A documented COVID-19 related financial impact:** If your household has experienced a loss or reduction in income, or an increase in household or other expenses as a result of the COVID-19 pandemic, you must demonstrate your impact by providing one or more of the following (this is not a complete list of acceptable documentation):
 1. A letter from an employer or other source of income citing COVID-19 as a reason for reduced work hours, termination, or other substantial reduction in pay.
 2. Employer payroll checks or payroll stubs showing a reduction in pay following the COVID-19 pandemic.
 3. Bank statements showing a reduction of income following the COVID-19 pandemic, must provide 2 consecutive months of statements.
 4. Documentation showing payment of substantial out-of-pocket medical or other increased expenses due to COVID-19.
 5. Documentation showing financial impact due to school closure or loss of childcare an explanation must be provided on the COVID-19 Financial Hardship Certification Form.
 6. Documentation of illness or death of a household member causing a decrease in income.
 7. Notice of qualification for unemployment or expired unemployment through CARES Act.
 8. Any other objectively verifiable documentation to demonstrate a substantial hardship or inability to make timely rent payments caused by COVID-19.
- Proof of 2020 household income:**
Any of the following may be used:
 - 1040 Tax Returns
 - 1099-NEC
 - 1099-MISC
 - W-2
 - 1040 Schedule C (self-employed)
 - 1099G
 - Form SSA-1099
 - 1042S Benefit Statement
- Verification that your household meets the 50% Area Median Income limits.** Use the table below to find the number of persons living in your household, if your total household income is LESS than the amount shown for your household size, you may be eligible for assistance.

NUMBER OF PERSONS IN HOUSEHOLD	1	2	3	4	5	6	7	8
50% OF AMI	\$26,400	\$30,150	\$33,900	\$37,650	\$40,700	\$43,700	\$46,700	\$49,700



San Bernardino County Rent Relief Partnership

- The San Bernardino County Rent Relief Partnership is open for San Bernardino County renters in eligible areas seeking rental assistance!
- Eligibility is limited to renters in San Bernardino County with a current written lease or rental agreement, a household income of less than 50% Area Median Income, and a documented loss of income or financial impact due to COVID-19.
- Assistance is available to qualified households without regard to immigration status.
- The Program can help pay up to 12 months of past due rent and late fees incurred from March 13, 2020 until the time of application.
- Depending on available funding, utilities and future rent assistance may be offered beginning June 15, 2021.
- Tenants and/or landlords may apply for assistance, participation from both parties will be required.
- To complete an application, go to www.sbcrentrelief.com or call 2-1-1, extension 5.

For more information, visit www.SBCRentRelief.com!

