



**Morehouse School of Medicine  
National COVID-19 Resiliency Network (NCRN)  
Regional Community Coalition (RCC) Micro Grants  
Funding Opportunity**

**National COVID-19 Resiliency Network (NCRN) Background**

The Morehouse School of Medicine (MSM) National COVID-19 Resiliency Network (NCRN) was designed to develop and coordinate a strategic and structured national network of national, state/territorial/tribal, and local public and community-based organizations that will mitigate the impact of COVID-19 on racial, ethnic minority, rural and socially vulnerable populations.

To mitigate the impact of COVID-19 on racial and ethnic minority, rural, and other disproportionately impacted populations, [MSM announced](#) the NCRN as part of the National Infrastructure for Mitigating the Impact of COVID-19 within Racial and Ethnic Minority Communities (NIMIC) Initiative, a three-year cooperative agreement between Health and Human Services Office of Minority Health and the Morehouse School of Medicine.

The NCRN partners includes local, state, and national partners representing the following priority groups: Black/African American, Hispanics/Latinos, American Indians/Alaska Natives, Asian Americans, Native Hawaiians and other Pacific Islanders, Individuals living in or representing Tribal Lands, Individuals with intellectual, developmental, sensory, or physical disabilities, Justice System Involved Adults, Migrant and Agricultural Farmworkers, Immigrant and Refugee Communities, Underserved Rural Populations.

**NCRN Objective**

To mitigate the impact of COVID-19 on racial and ethnic minority, rural, and socially vulnerable populations, MSM established the National COVID-19 Resiliency Network (NCRN), to focus on six foundational priority areas:

<p><b>Identify and Engage Vulnerable Communities</b> </p> <p>through local, state, territory, tribes and national partners.</p>	<p><b>Nurture Existing and Develop New Partnerships</b> </p> <p>to ensure an active information dissemination network.</p>	<p><b>Disseminate Culturally &amp; Linguistically Appropriate Information</b> </p> <p>In partnership with vulnerable communities and national, state, local, territory, tribe and government organizations</p>
<p><b>Link Vulnerable Communities to Resources with Technology</b> </p> <p>Connecting communities to community health workers, healthcare and social services.</p>	<p><b>Monitor and Evaluate</b> </p> <p>identifying successes and measuring outcomes to improve the program.</p>	<p><b>Comprehensive Dissemination</b> </p> <p>using mainstream media, white papers, and publications to educate and train the response workforce.</p>



**Grant Number:** 1 CPIMP201187-01-00

**Principal Investigator:** Dominic Mack, MD, MBA  
Morehouse School of Medicine

**Administrative Director:** Lora Wills, MPAff  
Morehouse School of Medicine

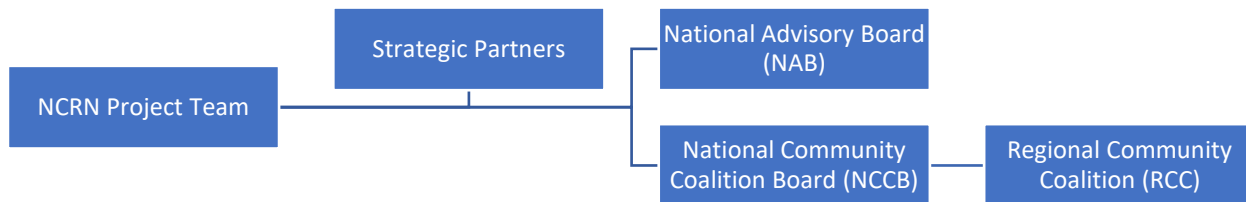
**Project Website:** [www.msm.edu/ncrn](http://www.msm.edu/ncrn)

**Regional Community Coalition (RCC)**

The Regional Community Coalition (RCC) is a sub-committee of the National Community Coalition Board (NCCB) of the National Covid-19 Resiliency Network (NCRN). The RCC is established in alignment with [U.S. Department of Health and Human Services regions](#) to allow for the expansion of the network at the grassroots level to ensure network member organizations have an opportunity to network and engage amongst NCRN strategic partners and each other. The RCC also includes representatives from the Territory and Regional Offices of Minority Health.

**RCC Roles and Responsibilities**

The RCC fosters collaboration and networking to create sustainability among Community Organization and Strategic Partners for future cross collaborative work and activities for the successful and immediate response, recovery, and residency reduction of COVID-19 among impacted populations.



### RCC Meeting Dates

The RCC meets on a quarterly basis. The meetings are hosted on the 3rd month of every Quarter on the third Tuesday from 3 PM – 4:30 PM Eastern Time.

#### 2021 Meeting Dates:

- March 16, 2021
- June 15, 2021
- September 21, 2021
- December 14, 2021 \*exception due to holidays

To join the RCC as a Community Organization Partner, visit the NCRN website ([www.msm.edu/ncrn](http://www.msm.edu/ncrn)) homepage and subscribe as a community organization.

The NCRN Community Engagement Core is responsible for the relationship management of the activities performed by the NCRN partners. **The NCRN Community Engagement Core invites non-profit community-based organizations (CBOs) to submit proposals to apply for funding designed to assist communities in gaining increased access to COVID-19 vaccines.**

### Eligibility Criteria

- The CBO's headquarters must be based in 1 of the 10 identified regions of United States (Appendix A).
- The CBO's COVID-19 vaccine efforts must be aligned with one or more of the listed NCRN population priority groups: Black/African Americans, Hispanic/Latinos, Asian Americans, Native Hawaiians/Pacific Islanders, American Indians/Alaska Natives, Individuals living in or representing Tribal Lands, Individuals with intellectual, developmental, sensory, or physical disabilities, Justice System Involved Adults, Migrant and Agricultural Farmworkers, Immigrant and Refugee Communities, Underserved Rural Populations.
- The RCC Micro Grant awards will be limited to non-profits engaged in grass roots community-based work with an organizational annual revenue of less than \$2 million dollars.
- Completion of the RCC Micro Grant Funding Opportunity Application.
- Awarded CBOs must be willing to participate in the Regional Community Coalition (RCC) by registering as a community organization through the NCRN platform ([www.msm.edu/ncrn](http://www.msm.edu/ncrn)).
- Awarded CBOs must be willing to complete a community engagement report at the end of the award period that includes reporting metrics of community engagement and information dissemination.

### Funding Limits, Budgeting, and Organization Requirements

- For profit organizations, Federal, State and Local Offices of Government, NCRN Strategic Partners, and MSM Staff/Faculty will not be eligible to receive an NCRN RCC Micro Grant.
- Budgets may include personnel (salaries and fringe), consultants, supplies, and other approved expenses.
- Budgets may not include capital expenditures, charges for patient care, medications, lobbying, any political activity, or rental costs of off-site facilities.
- The NCRN will fund up to twenty-five \$5000 grants among the 10 United State Regions (Appendix A).
- Awarded funds will be disbursed in two payments (½ up front and ½ at award period midpoint).
- Award period of performance starts on August 15, 2021 and ends on November 15, 2021.



### **Application Submission**

- Electronic submission must be received by **11:59 pm EST on Saturday, July 10, 2021** through the following link: <https://forms.gle/1qMFsZaeizGH2edJ7>
- See Appendix B for questions included in electronic application.

### **Selection Process**

- The NCRN Community Engagement Core will review all submissions and select award recipients.
- Decisions will be announced by the NCRN Community Engagement Director on or before **July 30, 2021**. All decisions by the Community Engagement Core are final.

### **Technical Assistance**

If you have any questions about the RCC Micro Grant Funding Opportunity Announcement or application process, please call 1-877-904-5097 or email [ncrn@msm.edu](mailto:ncrn@msm.edu).



## **(RCC) Micro Grant Funding Opportunity – Appendix A**

### **REGION 1**

Connecticut, Maine, Massachusetts, New Hampshire, Rhode Island, and Vermont

### **REGION 2**

New Jersey, New York, Puerto Rico, and the Virgin Islands

### **REGION 3**

Delaware, District of Columbia, Maryland, Pennsylvania, Virginia, and West Virginia

### **REGION 4**

Alabama, Florida, Georgia, Kentucky, Mississippi, North Carolina, South Carolina, and Tennessee

### **REGION 5**

Illinois, Indiana, Michigan, Minnesota, Ohio, and Wisconsin

### **REGION 6**

Arkansas, Louisiana, New Mexico, Oklahoma, and Texas

### **REGION 7**

Iowa, Kansas, Missouri, and Nebraska

### **REGION 8**

Colorado, Montana, North Dakota, South Dakota, Utah, and Wyoming

### **REGION 9**

Arizona, California, Hawaii, Nevada, American Samoa, Commonwealth of the Northern Mariana Islands, Federated States of Micronesia, Guam, Marshall Islands, and Republic of Palau

### **REGION 10**

Alaska, Idaho, Oregon, and Washington



**(RCC) Micro Grant Funding Opportunity – Appendix B**

1. Email of Individual Submitting Grant Application: (Text) \_\_\_\_\_
2. Name of Individual Submitting Grant Application: (Text) \_\_\_\_\_
3. Title of Individual Submitting Grant Application: (Text) \_\_\_\_\_
4. Organization Name: (Text) \_\_\_\_\_
5. Is Your Organization a Non-Profit? (Select Option)  
 Yes       No
6. Organization City and State: (Text) \_\_\_\_\_
7. Organization Zip Code: (Numerical) \_\_\_\_\_
8. Organization Region – See Appendix A for Guidance: (Select all the apply)  
 Region 1       Region 2       Region 3       Region 4       Region 5  
 Region 6       Region 7       Region 8       Region 9       Region 10
9. Organization Annual Revenue: (Numerical) \_\_\_\_\_
10. Organization Mission Statement and/or Purpose? (Text) \_\_\_\_\_
11. Organization Website URL: (Text) \_\_\_\_\_
12. What COVID-19 Related Activities Does Your Organization Currently Engage In? (Select all that apply)
 

<input type="checkbox"/> COVID-19 Vaccine Education	<input type="checkbox"/> Linkage to COVID-19 Vaccine
<input type="checkbox"/> COVID-19 Clinical Trials Education	<input type="checkbox"/> Linkage to COVID-19 Clinical Trials
<input type="checkbox"/> COVID-19 Prevention Education	<input type="checkbox"/> Linkage to COVID-19 Prevention Education
<input type="checkbox"/> COVID-19 Prevention Supplies (Masks, Gloves, etc.)	
<input type="checkbox"/> Linkage to COVID-19 Prevention Supplies (Masks, Gloves, etc.)	
<input type="checkbox"/> COVID-19 Symptom Checking	<input type="checkbox"/> Linkage to COVID-19 Symptom Checking
<input type="checkbox"/> COVID-19 Testing	<input type="checkbox"/> Linkage to COVID-19 Testing
<input type="checkbox"/> COVID1-19 Treatment/Care	<input type="checkbox"/> Linkage to COVID1-19 Treatment/Care
<input type="checkbox"/> Social Services	<input type="checkbox"/> Linkage to Social Services
<input type="checkbox"/> N/A	<input type="checkbox"/> Other: _____



13. What Target Demographic Does Your Organization Serve: (Select all that apply)

- Black/African American     Latino/Hispanic     American Indian     Alaska Native
- Native Hawaiian     Pacific Islander     Asian American     White/Caucasian
- Incarcerated     Justice-Involved     Migrant Worker     Disabled
- Meat Packing Worker     Torture Survivor     Rural Area Resident
- N/A     Other: \_\_\_\_\_

14. Does Your Organization Currently Have an Existing Contract/MOU with NCRN?

- Yes     No

15. How Did You Hear About the RCC Grant Funding Opportunity? (Text) \_\_\_\_\_

16. How Will a RCC Micro Grant Enable Your Organization to Increase Access to COVID-19 Vaccines in the Community? (Text – 500 Words or Less)

---



---

17. Attach a proposed budget and budget justification. (Upload)