

Location: \_\_\_\_\_



**MC-10**

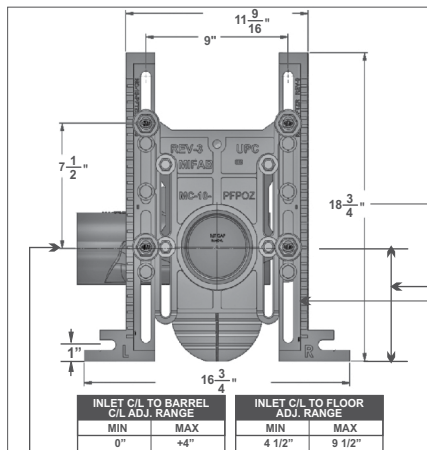
**HORIZONTAL ADJUSTABLE WATER CLOSET CARRIER  
(FOR SIPHON JET AND BLOWOUT TOILETS)**

**Specification:** MIFAB® Series MC-10 (Specify -L for left or -R for right design) single, horizontal, adjustable, water closet carrier with lacquered cast iron fitting, 4" (102) no hub waste, 2" (51) no hub vent connection, lacquered cast iron gasketed adjustable faceplate, universal floor mounted cast iron foot supports, adjustable 8" tapered thread ABS nipple with integral test cap, neoprene bowl gasket, hardware, threaded rod protectors, polished chrome plated finishing cap nuts and rear anchor tie down support.

**Function:** Used with off the floor plumbing fixtures that are wall mounted and have no contact with the finished floor. The closet carrier is completely concealed within the wall and supports the load of the fixture through a faceplate and foot support system that is anchored to the floor. Sanitation underneath the fixture is more efficiently and economically maintained when installed off of the floor compared to floor mounted.

**Note:** 10 1/2" (267) minimum space required between front of foot and rear of anchor support. 8" (203) minimum in wall space required between back of rear anchor support and back of in wall foot supports. Note: Foot supports and faceplate are assembled at the factory before shipment in the typical siphon jet water closet configuration and are reversible for the blowout water closet design.

**Note:** 8" tapered thread ABS nipple shipped standard with MC-10 Series carriers. The universal faceplate assembly accepts all nipple variations, rolling thread (-OR), cast iron (-CI) and tapered thread ABS with adjustable horn (-AH).



**MC-10-PFPOZ  
UNIVERSAL  
FACEPLATE ASSEMBLY**

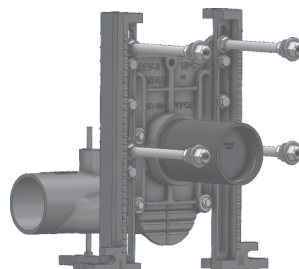
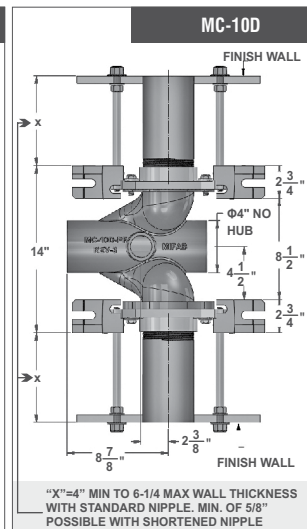
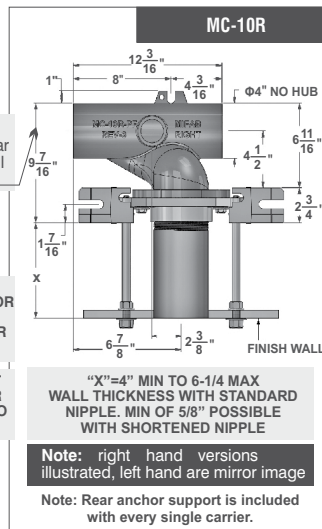
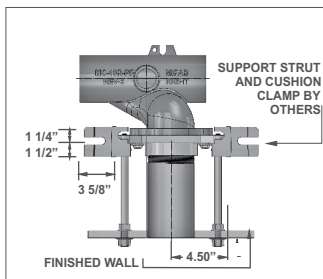
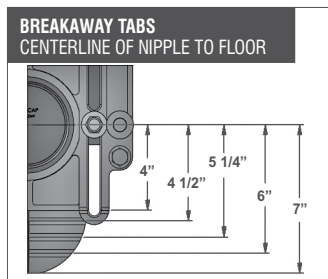
**Note:** Add 1" to dimension if option (-3) is specified, rear anchor support for drywall construction

For standard and ADA Toilets.

**FOOT SUPPORTS SHOULD BE SECURELY ANCHORED TO FLOOR WITH 1/2" BOLTS AND ANCHORS BY OTHERS (ONLY ONE ANCHOR NEEDED PER FOOT)**

**1/2" TAPPING FOR STRUT MOUNTED FLUSH VALVE WATER SUPPLY INCORPORATED INTO BACK OF CARRIER FACEPLATE**

\*MC-10 is tested to support a 500 lb. load with the rear anchor support.



**SUFFIX      OPTIONAL VARIATIONS**

<b>-01</b>	Neoprene bowl gasket (MC-10-PBG)
<b>-1</b>	Finishing / Tiling Frame (MC-10-1-PTFK)
<b>-3</b>	Rear anchor support (MC-10-3-PRSFK)
<b>-10</b>	Auxiliary support, recommended with nipple lengths over 12"(MC-10-AFS)
<b>-12</b>	12" tapered thread ABS nipple* (MC-10-PN12-31)
<b>-13</b>	All galvanized
<b>-14</b>	Vandal proof finish trim (MC-10-PFH-14)
<b>-17</b>	Test plug for custom cast iron nipples
<b>-19</b>	Nipple wrench (MC-10-PCW)
<b>-20</b>	Flush valve support (MC-10-FVS)
<b>-22</b>	Less fitting
<b>-AH8</b>	8" ABS nipple with adjustable horn (MC-10-PN8AH-31)

<b>-AH12</b>	12" ABS nipple with adjustable horn* (MC-10-PN12AH-31)
<b>-CI-4</b>	4" rolling thread cast iron nipple (MC-10-PN4R-50)
<b>-CI-6</b>	6" rolling thread cast iron nipple (MC-10-PN6R-50)
<b>-CI-8</b>	8" rolling thread cast iron nipple (MC-10-PN8R-50)
<b>-CI-12*</b>	12" rolling thread cast iron nipple* (MC-10-PN12R-50)
<b>-CI-24</b>	24" rolling thread cast iron nipple (MC-10-PN24R-50)
<b>-FM</b>	Floor mount back outlet fixture support
<b>-HD-750</b>	750 lb. rated heavy duty
<b>-HDX</b>	1,000 Lb. rated extra heavy duty
<b>-OR8</b>	8" rolling thread ABS nipple (MC-10-PN8R-31)
<b>-OR12*</b>	12" rolling thread ABS nipple (MC-10-PN12R-31)
<b>-PFAB</b>	Prefabricated carriers

\* H-1167-KA-14 ( Threaded rods for 12" nipples 5/8" x 14")

CALIFORNIA PROPOSITION 65 WARNING. This product contains chemicals known to the State of California to cause cancer and birth defects or other reproductive harm.

Job Name: \_\_\_\_\_

Page No: \_\_\_\_\_

Section No: \_\_\_\_\_

Contractor: \_\_\_\_\_

Schedule No: \_\_\_\_\_

Purchase Order No: \_\_\_\_\_