

Program Pillars

Utilizing a collaborative, lifecycle approach to workforce development

Explore

Youth are encouraged to explore a variety of skilled trades in the built environment.

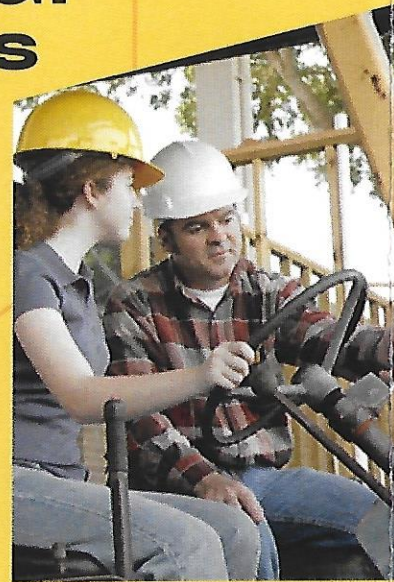
Train

CORE certified graduates are ready for employment and further specialization.

Go Mobile

An unfinished scale model home on wheels will enhance exploration, training and community outreach.

Addressing critical issues



The South Central Coast Region has an acute housing shortage and affordability crisis. Efforts are hampered by a critical shortage of skilled labor, delaying new development and increasing prices. Training programs to provide new skilled labor are severely limited in the Region. Over 90% of middle & high schools in the County do not offer any instruction or opportunities to explore the built environment.

Program administrator

Housing Opportunities Made Easier

501(c)3 nonprofit #20-4616988

www.vcHOME.org

Info@vcHOME.org

805-323-6534



A collaboration with education, industry and community stakeholders, led by:



Construction Exploration & Training Collaborative

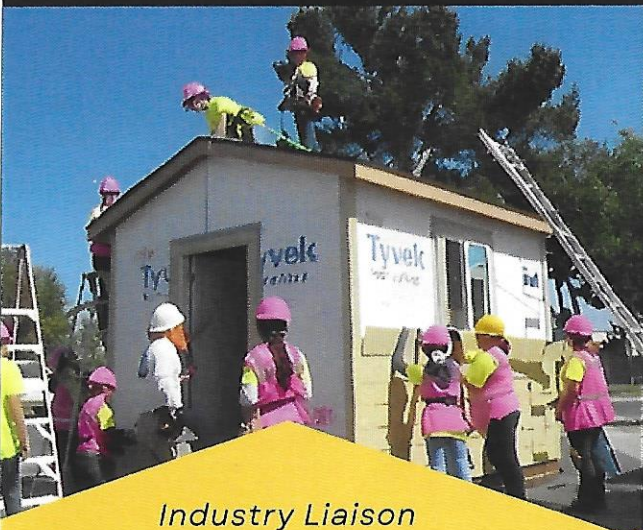
*Building Skills, Building Community:
Investing in the Future of
Construction.*



Explore

Providing opportunities for youth 12-17 to explore the built environment will:

- De-stigmatize trade jobs and expand career path options.
- Provide higher wage jobs with immediate income-earning, without the college cost burdens.
- Give options for students who learn better with hands-on instruction.
- Open non-traditional avenues for women.
- Integrate with new technology supporting environmental goals.



Industry Liaison

Lisa Eklund, EP Consulting
eklundpconsulting@gmail.com

Collaborative partners: schools, youth groups, nonprofits, and industry professionals, especially in lower income and rural areas.

Train

The 150 hr. CORE* credential program is the first step for entry-level jobs, apprenticeship programs or a gateway for further specialization. Instruction is provided in safety, hand and power tools, construction math, materials handling, construction drawings, and rigging. Upon completion graduates receive CORE certification.

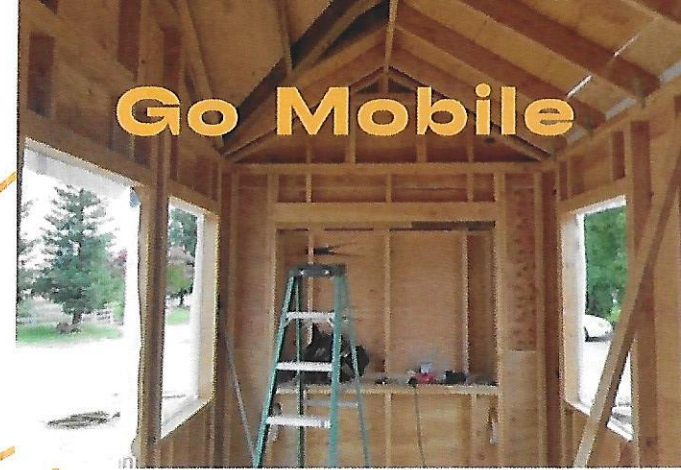
OSHA-10 certificate program is also available as well as assistance in job placement.

Construction camps, fast-track, weekend and evening schedules are offered.

**CORE is a program of the National Center for Construction Education and Research (NCCER)*



Go Mobile



A partially constructed home-on-wheels will show construction components, showcase new technology, be equipped with tools and hands-on activities for exploration and training, and promote community engagement.

Building and outfitting this trailer requires collaboration between local contractors, suppliers, student program, and generous donors.

Training & Job Placement



**Ventura County
Contractor's Association**

Cary Hansen, Board President
www.VCCAINC.com
president@vccainc.com
805-701-1858