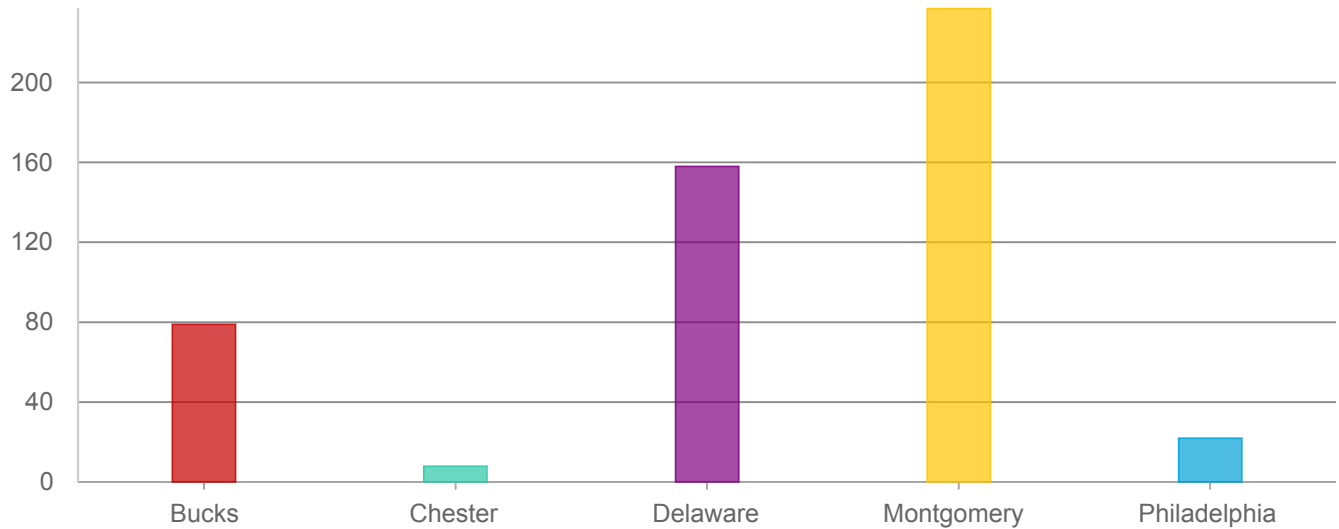


# Business Impacts of COVID-19 Survey

Which county is your business primarily located in? \*

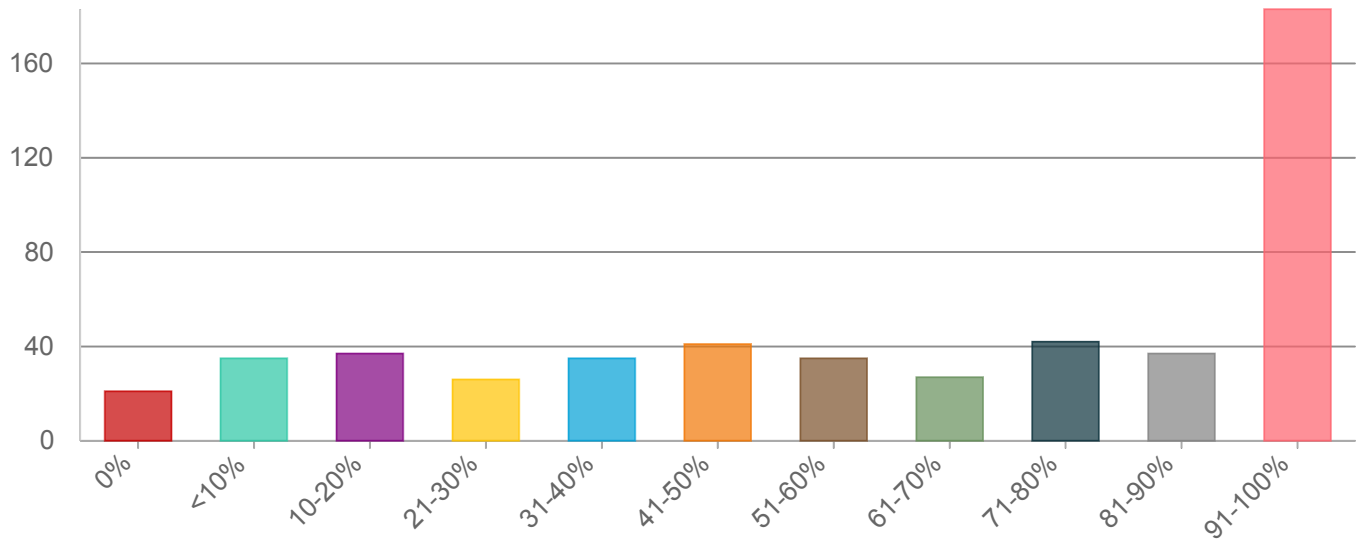


Answers	Count	Percentage
Bucks	79	16%
Chester	8	2%
Delaware	158	31%
Montgomery	237	47%
Philadelphia	22	4%

Answered: 504 Skipped: 0

# Business Impacts of COVID-19 Survey

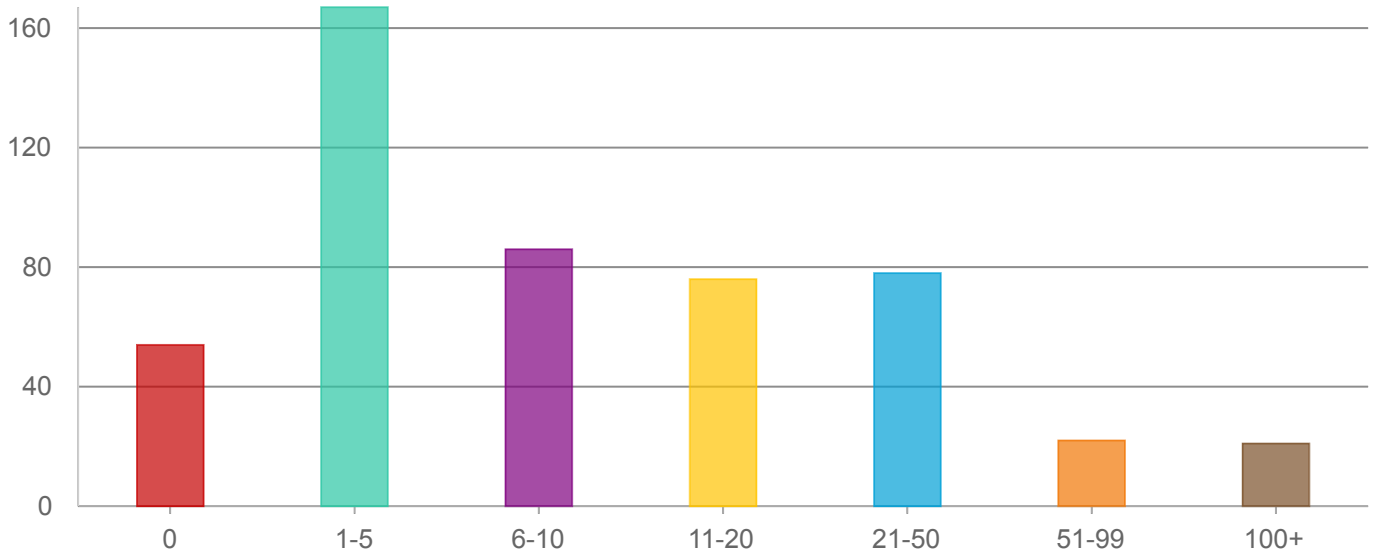
Please estimate any revenue decline you've experienced as a result of COVID-19, if applicable \*



Answers	Count	Percentage
0%	21	4%
<10%	35	7%
10-20%	37	7%
21-30%	26	5%
31-40%	35	7%
41-50%	41	8%
51-60%	35	7%
61-70%	27	5%
71-80%	42	8%
81-90%	37	7%
91-100%	183	36%

# Business Impacts of COVID-19 Survey

How many employees do you have? \*

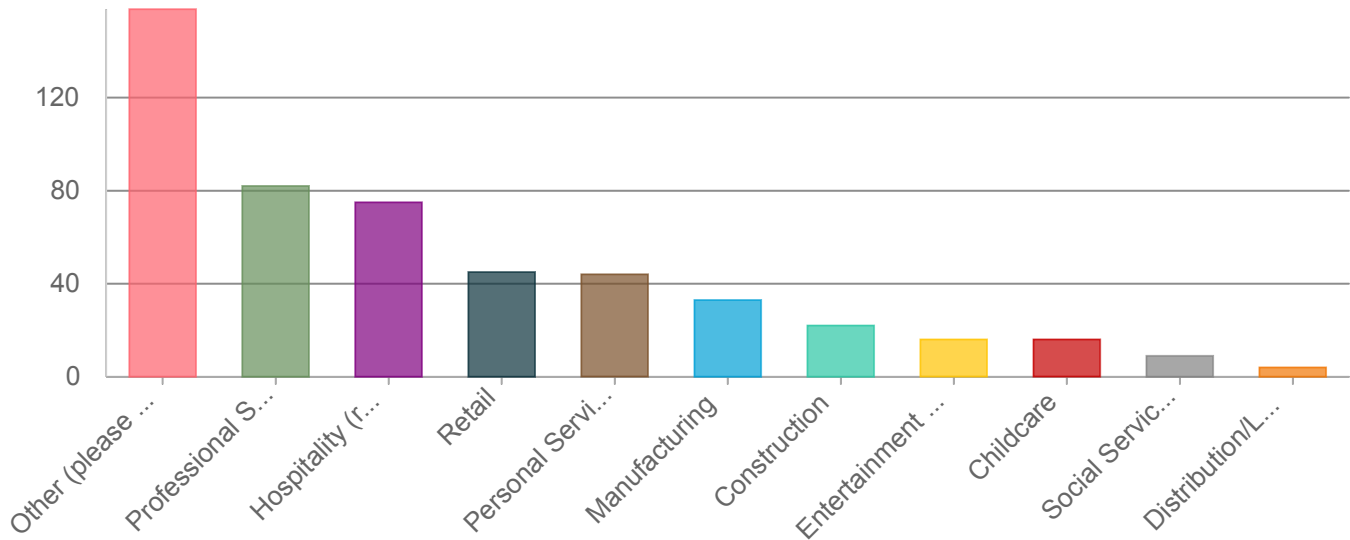


Answers	Count	Percentage
0	54	11%
1-5	167	33%
6-10	86	17%
11-20	76	15%
21-50	78	15%
51-99	22	4%
100+	21	4%

Answered: 504 Skipped: 0

# Business Impacts of COVID-19 Survey

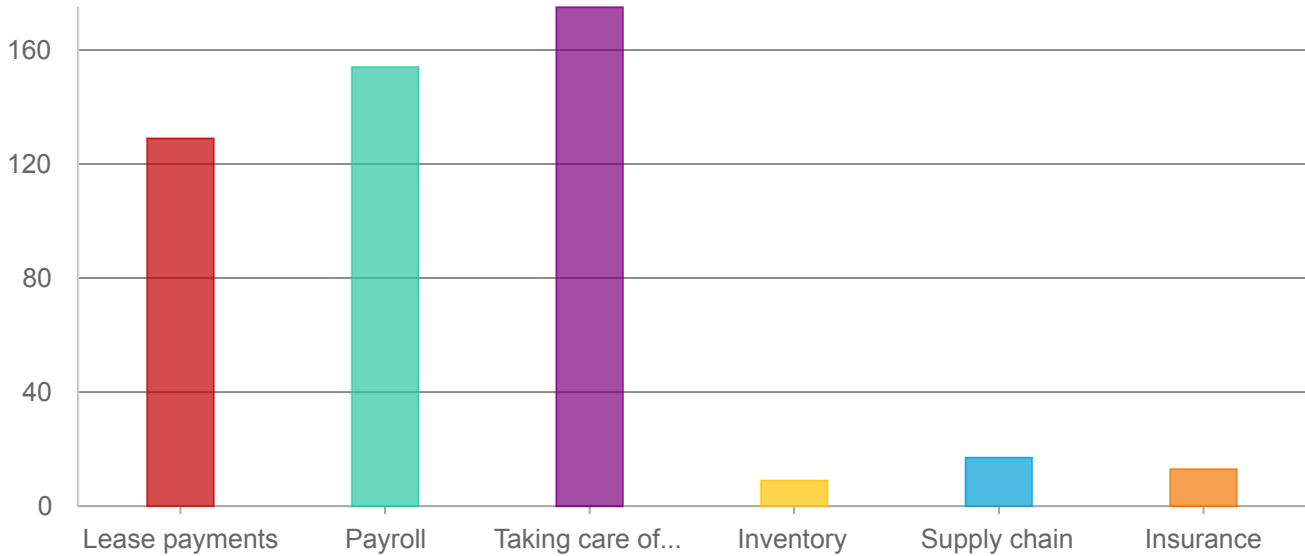
What is your industry? \*



Answers	Count	Percentage
Other (please specify)	158	31%
Professional Services	82	16%
Hospitality (restaurant, catering, hotels)	75	15%
Retail	45	9%
Personal Services (barber shop, nail salon, dry cleaner, etc.)	44	9%
Manufacturing	33	7%
Construction	22	4%
Entertainment (theaters, cultural institution, etc.)	16	3%
Childcare	16	3%
Social Services	9	2%
Distribution/Logistics/Warehousing	4	1%

# Business Impacts of COVID-19 Survey

What are you most concerned about? \*

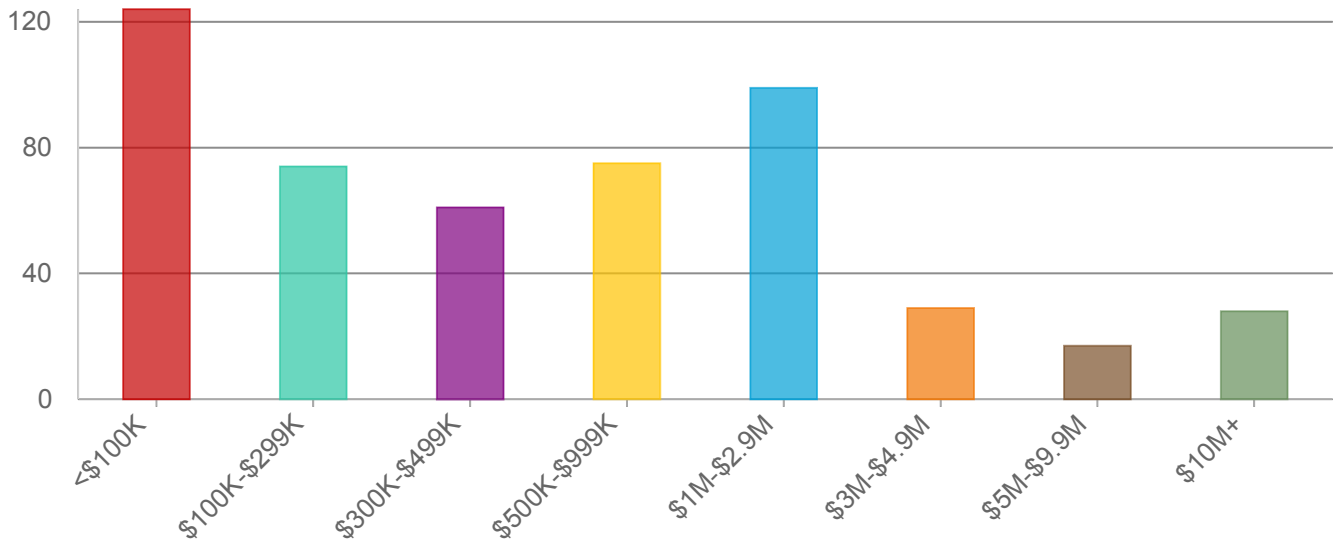


Answers	Count	Percentage
Lease payments	129	26%
Payroll	154	31%
Taking care of employees	175	35%
Inventory	9	2%
Supply chain	17	3%
Insurance	13	3%

Answered: 497 Skipped: 7

## Business Impacts of COVID-19 Survey

What was your annual business revenue last year? \*

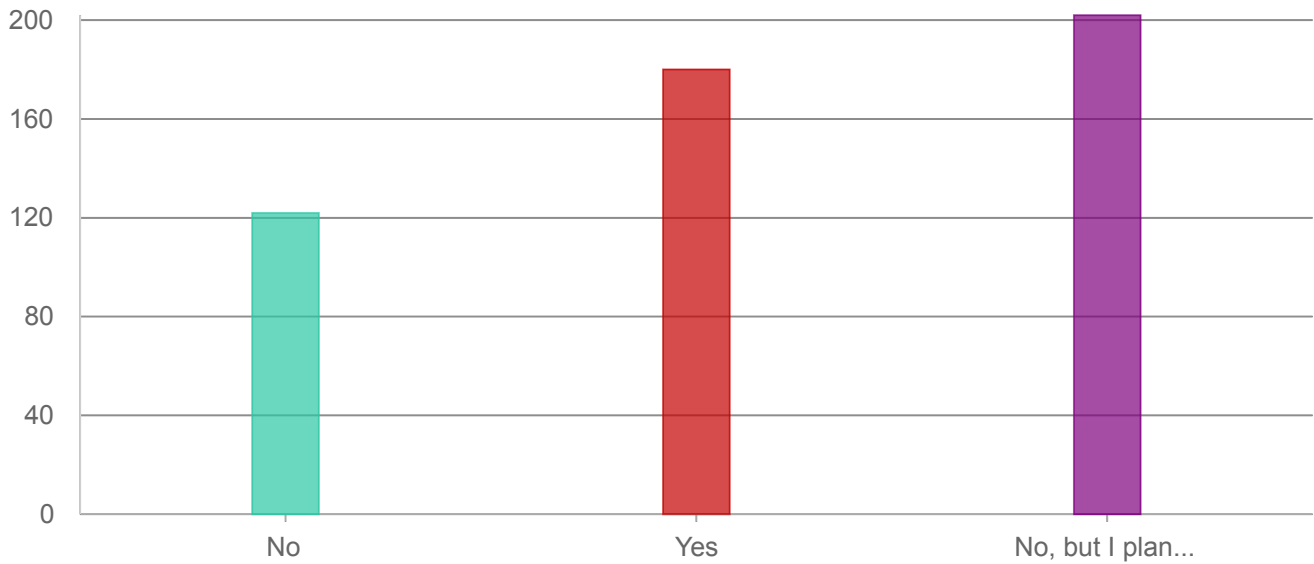


Answers	Count	Percentage
<\$100K	124	25%
\$100K-\$299K	74	15%
\$300K-\$499K	61	12%
\$500K-\$999K	75	15%
\$1M-\$2.9M	99	20%
\$3M-\$4.9M	29	6%
\$5M-\$9.9M	17	3%
\$10M+	28	6%

Answered: 504 Skipped: 0

# Business Impacts of COVID-19 Survey

Have you talked to your financial institutions and insurance provider(s) about what kind of relief they are ext...



Answers	Count	Percentage
No	122	24%
Yes	180	36%
No, but I plan to	202	40%

Answered: 504 Skipped: 0