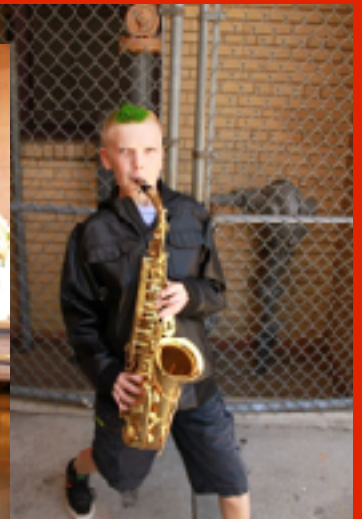


# UPark Band Night

Join the band on this very special night. What instrument will you play? The *flute, clarinet, saxophone, trumpet, trombone, or percussion*? Try them all at band night. You can't go wrong and will have lots of fun. See you soon!

**Who:** All 4th-5th grade students  
**Where:** UPark Auditorium  
**When:** August 29th at 6 p.m.  
**Why:** Because "You are the Music!"  
Let's get your voice heard!

Christmas Gainsbrugh @ #303-524-0176  
[christmas.BALM@gmail.com](mailto:christmas.BALM@gmail.com)

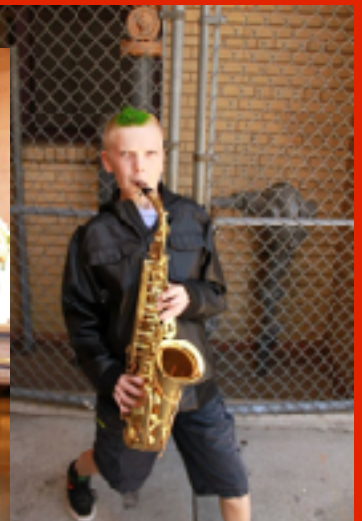


# UPark Band Night

Join the band on this very special night. What instrument will you play? The *flute, clarinet, saxophone, trumpet, trombone, or percussion*? Try them all at band night. You can't go wrong and will have lots of fun. See you soon!

**Who:** All 4th-5th grade students  
**Where:** UPark Cafeteria  
**When:** August 29th at 6 p.m.  
**Why:** Because "You are the Music!"  
Let's get your voice heard!

Christmas Gainsbrugh @ #303-524-0176  
[christmas.BALM@gmail.com](mailto:christmas.BALM@gmail.com)



### **Common Questions about Band:**

- **How much does band cost?**

Band Tuition is \$80/month (\$10/class)

- **What if my child loves music but we can't afford tuition?**

Scholarships are available, please ask!

- **What if we can't afford to buy an instrument?**

We have over 40 school instruments for you to use!

Instruments can be rented for \$20/month at the music store.

- **When are classes?**

Beginning Band meets Mon/Wed from 8:00-8:55 a.m. in the auditorium.

Intermediate Band meets Tue/Thur from 8:00-8:55 a.m. in the auditorium.

- **My child doesn't know how to play an instrument or read music!**

No experience required. We will teach them everything they need to know!

***"College admissions officers continue to cite participation in music as an important factor in making admissions decisions.***

***They claim that music participation demonstrates time management, creativity, expression, and open-mindedness."***

***The Associated Press***

### **Common Questions about Band:**

- **How much does band cost?**

Band Tuition is \$80/month (\$10/class)

- **What if my child loves music but we can't afford tuition?**

Scholarships are available, please ask!

- **What if we can't afford to buy an instrument?**

We have over 40 school instruments for you to use!

Instruments can be rented for \$20/month at the music store.

- **When are classes?**

Beginning Band meets Mon/Wed from 8:00-8:55 a.m. in the auditorium.

Intermediate Band meets Tue/Thur from 8:00-8:55 a.m. in the auditorium.

- **My child doesn't know how to play an instrument or read music!**

No experience required. We will teach them everything they need to know!

***"College admissions officers continue to cite participation in music as an important factor in making admissions decisions. They claim that music participation demonstrates time management, creativity, expression, and open-mindedness."***

***The Associated Press***