

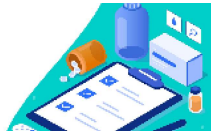
Covid-19 Relief Navigators

Do you need **HELP** *applying* for:

***rental and utility assistance** ***food assistance**
***child care assistance** ***healthcare**

Do you need **HELP** with:

***Anchorage School District** ***Covid-19 info**
or other **Resources** for Anchorage families?



Contact Us:

Online Form: muni.org/CPLN

Email: AnchoragePLNS@gmail.com

Call or Text: **(907) 290-3639**



Call and Press 0 - or enter language Extension

Ext. 0 - **English/Main Line** (interpreting services available)
Ext. 1 - **Amharic** Ext. 2 - **Arabic** Ext. 3 - **Dinka** Ext. 4 - **Korean**
Ext. 5 - **Samoan** Ext. 6 - **Spanish** Ext. 701 - **Somali / Swahili**
Ext. 704 - **Russian** Ext. 706 - **Tongan** Ext. 710 - **Nuer**

The CPLN project builds on ALP's existing **Peer Leader Navigator program**; a group of trusted, multilingual, and multicultural community residents who help underserved Limited English Proficient communities access health information and resources.

AnchoragePLNs.org

You can visit the **Alaska Literacy Program** at 1345 Rudakof Circle, Suite 104, Anchorage, AK 99508 to speak to a CPLN in person during:

CPLN office hours:

- ★ Tuesdays, 11:30 a.m. – 1:00 p.m.
- ★ Wednesdays, 4:30 p.m. – 6:00 p.m.
- ★ Thursdays, 11:30 a.m. – 1:00 p.m.
- ★ Fridays, 11:30 a.m. – 1:00 p.m.

The assistance to apply for the resources available in our community are **FREE**.

