



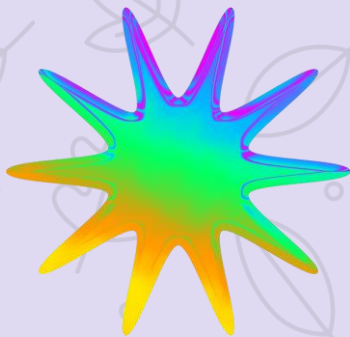
Summer 2022
Volume 4
Issue 3

SOSA TIDBITS

Synod of South Atlantic



**Plug In & Recharge at PWSOSA
Epworth Triennial Gathering
October 21-23, 2022**



**All Honorary Life Members -
Come to Strickland Auditorium @ 5 pm
on Saturday, October 22.
We will have a group picture taken!!!!**

TIME CHANGES!!!!!!

**Onsite registration starts Friday, October 21,
@ 10:30 am in Ellie Harvey House**

**Orientation for new attendees or anyone wanting
gathering information is @ 3:00 pm, Friday,
October 21 in Turner - Pioneer Room**

**PW Synod Business Meeting is 4:30 pm Friday,
October 21, in Turner Lodge, Pioneer Room.**

**Room check in starts @ 4 pm
Epworth Lobby**

**Silent Auction - Brown Center
Friday after plenary**

**TROLLEY RIDE STARTS AT 1:30 PM
FRIDAY, OCTOBER 21!!!**

PWPURPOSE

Forgiven and freed by God in
Jesus Christ, and empowered
by the Holy Spirit,
we commit ourselves

To nurture our faith through
prayer and Bible study

To support the mission of the
church worldwide

To work for justice and
peace, and To build an
inclusive, caring community
of women that strengthens
the Presbyterian Church
(USA) and witnesses to the
promise of God's kingdom

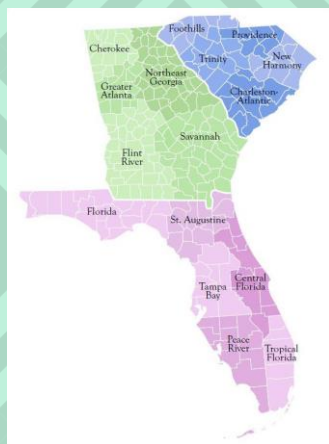


Ladies, we will not be supplying drinking water during the gathering this year. We apologize for any inconvenience. There are bottle water refilling stations throughout campus.

Ladies, please share this newsletter with your church ladies, they may be interested in taking a weekend for fellowship, worship & relaxation.



**Ladies, do you have your spending money for the gathering???
Lots of great buys in the Market Place in Brown Center.**



Look for the Synod map in Epworth lobby and mark your home church/presbytery with the pins supplied.

**Early registration ends 9/2, get your registration in now!!!!
You can download the form or apply online, go to the link
<https://pwsosa.com/save-the-date-october-21-23-2022-plug-in-recharge/>**



SPECIAL SATURDAY PRESENTATIONS:

Afternoon - Workshops 1:45 pm

Rev Diane Moffat - Matthew 25

Matthew 25:31-46 calls Presbyterians to actively engage in the world around us, so our faith comes alive and we wake up to new possibilities.

Rev Rashelle Hunter - Inclusive/Exclusive

Rashelle will talk about how to be better prepared to be inclusive.

Veda Gill - PEB

Presbyterian Education Board

The Presbyterian Education Board is an autonomous Board under the auspices of the Presbyterian Church of Pakistan and is supported by the Presbyterian Church (USA) and other churches and organizations worldwide.

After Evening Plenary

Hermina Glass-Hill – A native of Atlanta, Georgia, Hermina Glass-Hill is a Creation care steward, ocean conservationist, historian, scholar activist, artist, writer, public speaker, and grassroots environmental organizer in Coastal Georgia where five years ago she was called through a religious epiphany in which the Holy Spirit spoke to her on the banks of a river and welcomed her to her new home. She will present the book "*Reminiscences of My Life in Camp*," author Susie King Taylor

Ways to spend your time while at Epworth

**Dialogue with Partners in Ministry,
Thornwell, Villa International, Mission Haven,
Columbia Friendship Circle,
Presbyterian Homes of SC, PEB**

Shop in the Market Place

Presbyterian Women Inc

Creations of Hope

Rahab Rope

Cards for Cause

Just Coffee

Sunday Stitches

PW Cleveland GA

Visit the SoSA table

Trolley/Boat Rides - tickets prepurchased

Shopping in St. Simons

Meditation on the lovely grounds



Partners in Missions

Thornwell Home for Children provides hope for hurting children and families with safe and loving homes, academic programs, community-based programs, professional counseling, and therapy.

Villa International offers short-term residences to people from all parts of the world who come to Atlanta to study, work, and learn.

Mission Haven offers affordable short-term housing and friendly hospitality for mission co-workers of the Presbyterian Church (USA).

Columbia Friendship Circle Columbia Friendship Circle began when the spouses of two seminary professors encouraged other Atlanta wives to contribute one dollar each to help the seminary.

Presbyterian Communities of South Carolina - sets the standard to provide the highest quality and most compassionate care to those we serve.

Friends of PEB—The Presbyterian Education Board is an autonomous Board under the auspices of the Presbyterian Church of Pakistan and is supported by the Presbyterian Church (USA) and other churches and organizations worldwide.

MARKET PLACE - lots of items to browse

Creations of Hope – purchases unique crafts for resale in the United States and ensures that all profits are returned back to Haiti.

Presbyterian Women, Inc. – PW(PCUSA) provides countless resources to support the synods, presbyteries and congregations as women fulfill the PW Purpose.

Rahab's Rope – spreads awareness and helps eradicate sex trafficking.

Cards for Cause - Cards for a Cause has boxes of 30 individually-wrapped, beautifully embellished greeting cards in a super cute box. There are four different themes of card boxes.

PW Cleveland GA - Presbyterian Women from First Presbyterian Church in Cleveland, Georgia creates handmade items to raise money that is donated to various charities.

Just Coffee - Coffee with a Conscience, a grower owned coffee cooperative based in southern Chiapas Mexico.

Sunday Stitches LLC - is a small, woman-owned business that creates unique handmade clerical stoles for every church season and occasion.

SOSA Coordinating Team -- the communication link between PW Churchwide and PW in the presbyteries.