



## May - June 2026 Issue

Manella Calhoun - [mhc.clemson@gmail.com](mailto:mhc.clemson@gmail.com)

Stewardship of Creation Enabler - Foothills Presbytery

### Foothills Presbytery Area Highlights:

Shared from Fourth Presbyterian Church Website & Earth Care

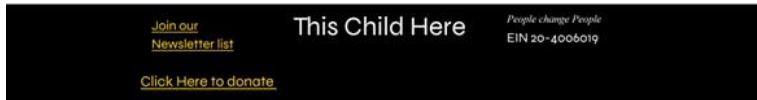
## Earth Care Pledge

Our **worship** and discipleship will celebrate God's grace and glory in creation.

Our **education** will encourage and support each other in keeping and healing the creation.

Our **facilities** will be managed, maintained, and upgraded to respect and cherish all creation.

Our **outreach** will encourage community involvement and public policy to protect and restore the earth.



Drone Attack



Artist in Residence Portraits



Childhood with a taste of war

<https://www.thischildhere.org/>

*We work with families displaced by the war. Thousands of people have fled cities in the east and arrived in Izmail, Ukraine in the west. As many fathers are in the military or still residing in places now dangerous, these families often consist of mothers and children. We provide products from grocery stores, and centres for youth and children's activities, including sports, music, art, and programs led by psychologists. Through these activities, summer camps, and the supportive community we have built, we offer therapy for the trauma and shock suffered by these families. This Child Here, Inc. is a Validated Ministry in the Presbyterian Church (USA).*

### *Vision, Mission and Values*

*Even in the midst of this current invasion of Russian forces into Ukraine, we feel that our vision, mission, and values continue to serve the dreams we have and the work we do.*

*Vision: Vulnerable youth and families in Ukraine living in peace and dignity.*

*Mission: To empower vulnerable youth and families of Ukraine to lead lives grounded in peace and dignity.*

*Values: In an environment marked by violence, conflict and distrust, we empower people, and are governed by the core values of :*

**Reformed & Always Being Reformed - Presbyterian Church  
(U.S.A.)** <https://pcusa.org/>



<https://pcusa.org/daily/devotion>

***What does the Lord require of you but to do justice and to love  
kindness and to walk humbly with your God?***

***Author Micah 6:8 (NRSV)***

<https://pcusa.org/worship-with-us/yearbook>

**“...God’s work in creation is too wonderful, too ancient, too beautiful, too good to be  
desecrated...Restoring creation is God’s own work in our time, in which God comes both to  
judge and to restore...”**

**—PC(USA) Environmental Policy**

<https://pcusa.org/about-pcusa/agencies-entities/interim-unified-agency/ministry-areas/hunger-program/sustainable-livingearth-care-concerns/earth-care-congregations>

---

**Presbyterians for Earth Care (PEC)**

<https://presbyearthcare.org/>



**227th GENERAL ASSEMBLY June 22 – July 2, 2026**

<https://presbyearthcare.org/general-assembly-2026/>

Is your congregation considering public policy advocacy on behalf of the earth? Jeff Cover’s book, Going Public: How Biblical People Help Us Find Our Voice for Public Life, will inspire you with stories of Bible characters who were called by God to stand up in public for their faith. Available from Amazon, Barnes & Noble or Outskirts Press. Contact the author for more info: [jeffcover17@gmail.com](mailto:jeffcover17@gmail.com)

H.R. 1897, sponsored by Rep. Bruce Westerman, contains numerous provisions that would drastically weaken the Endangered Species Act, our most effective law to protect

biodiversity and prevent the extinction of our most vulnerable animals, fish, and plants. Nearly all species listed under the ESA have been saved from extinction and hundreds are on the path to recovery today. As the climate crisis continues to threaten the biodiversity of Creation, we must do all we can to protect all creatures who are at risk. Contact your member of Congress: [https://secure.everyaction.com/RhdfR2\\_n4kGmzrThhn7zgA2](https://secure.everyaction.com/RhdfR2_n4kGmzrThhn7zgA2)

## **National Council of Churches of Christ - Eco-Justice Program Office**

<http://www.creationjustice.org/>



JUSTICE FOR GOD'S PLANET  
AND GOD'S PEOPLE

**Together, we're protecting, restoring, and rightly sharing God's creation.**

<https://www.creationjustice.org/action.html>

<https://www.creationjustice.org/52ways2026.html>

### **MAY**

#### **19. Where does your Drinking Water come From?**

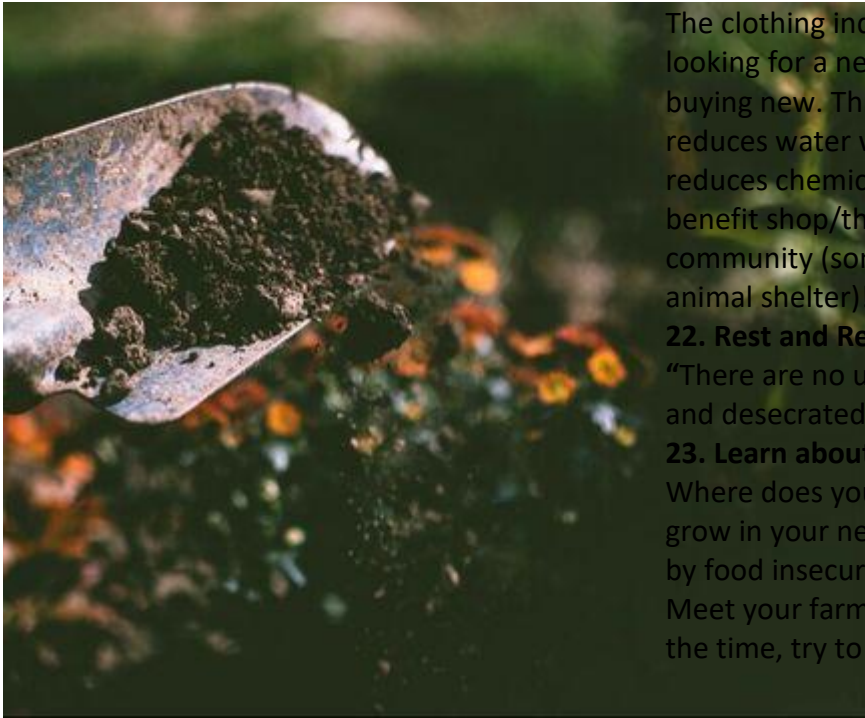
Are you able to drink your tap water? Where does it come from? How is it processed? Does it rain where you live? Are there often droughts? Does everyone in your community have access to clean drinking water? Consider where your water comes from and what is being done to protect your local water source.

#### **20. Endangered Species Day**

Happy endangered species day! Attacks on the Endangered Species Act have placed precious plants and animals more at risk than ever before. Check out CJM's resource to learn about and celebrate endangered plants and animals. Visit [creationjustice.org/resourcehub](http://creationjustice.org/resourcehub) to access the information.



**21. Thrift Shop**



The clothing industry has a large carbon footprint. When looking for a new outfit, head to the thrift store instead of buying new. Thrift shopping keeps clothes out of the landfill, reduces water waste (a byproduct of clothing production), and reduces chemical pollutants. Check if your town has a local benefit shop/thrift shop where the proceeds support the community (some donate proceeds to the local food pantry or animal shelter).

#### **22. Rest and Reflect**

“There are no unsacred places. There are only sacred places and desecrated places.” - Wendell Berry

#### **23. Learn about your Local Food Systems**

Where does your food come from? What native plants/crops grow in your neighborhood? How is your community affected by food insecurity? Does your town have a farmers market? Meet your farmers and support the local economy! If you have the time, try to plant and take care of one plant.

## **JUNE**

### **24. Take Action**

Many of God’s sacred marine areas are being put at-risk by pollution, overfishing, and coral bleaching. For example, the Blake Plateau off the coast of Georgia and South Carolina hosts the world's largest deep sea coral reef. Lack of protections and threats of deep sea mining places this biodiversity hotspot at risk. Learn more about the wonder of the Blake Plateau and why it needs to be protected at:

<https://www.creationjustice.org/blakeplateau.html>

### **25. It's Ocean Month!**

Consider how you are connected to the ocean. If you live close to the sea, plan a beach clean-up or hunt for nurdles (microplastics) in the sand. If you don’t live near the sea, clean up trash in your neighborhood, remembering that all watersheds are connected to the ocean. Learn about current ocean issues and ocean advocates working to heal

### **26. Use Gray Water**

Gray water is water that has been used but is not necessarily contaminated. You can use dish washing water, hand washing water, and cooking water to water plants.

### **27. Rest and Reflect**

Whether you live in a land-locked state or on the coast, everyone is connected to the ocean. Ecclesiastes 1:7 reminds us: "All streams run to the sea."

our seas. Below are some educational/inspiring ocean resources:

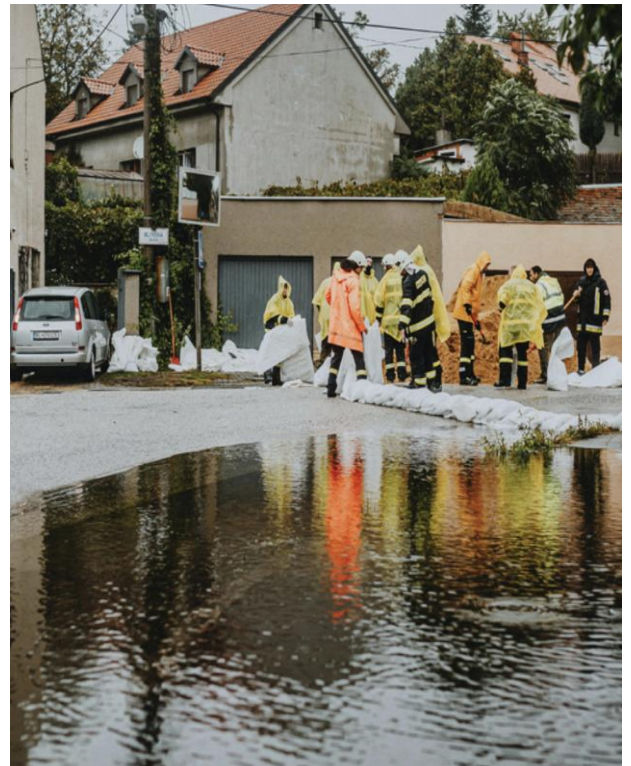
- Book: *Undrowned: Black Feminist Lessons from Marine Mammals* by Alexis Pauline Gumbs
- Podcast: “Marine Mammal Science”
- Documentaries: “Seaspiracy,” “Chasing Coral,” “The Blue Planet”
- Advocates: Ayana Elizabeth Johnson, Asha De Vos, Sylvia Earle



### [Featured Story: \*From Data to Dignity: St. Petersburg Thriving Earth Project Charts a Path Forward\*](#)

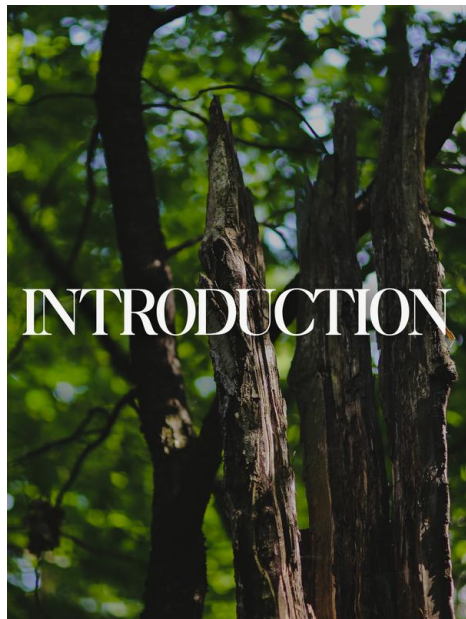
When Creation Justice Ministries first joined the Thriving Earth Exchange (TEX) initiative, we envisioned local church communities becoming catalysts for environmental resilience—places where data, faith, and justice would meet. That vision has taken a powerful step forward with the completion of our first project in St. Petersburg, Florida.

The Thriving Earth Exchange is a national program of the American Geophysical Union that connects communities with volunteer scientists to tackle local climate, pollution, and environmental justice challenges. In partnership with Creation Justice Ministries, the program helps congregations and faith-rooted organizations translate environmental concerns into actionable, community-driven science projects. Together, we identify priority issues—such as flooding, heat risk, air quality, or historical land injustices—and match congregations with technical experts who can provide mapping, data modeling, and scientific analysis at no cost to the community. Each project is shaped by local wisdom and guided by the values of justice, restoration, and love for neighbor.



[Read the full blog here](#)

## ["The Canopy of Creation](#)



### [Introduction & Overview](#)

"The Canopy of Creation is an invitation to look up. It's an invitation to notice the shade that meets us like mercy on a hot day; to remember the hush of a wooded trail, the steady presence of trunks and branches that outlast our moods and our news cycles. Many of us already love trees. We have felt their beauty in our bodies as cool air under leaves, birdsong held in a canopy, the quiet companionship of a living thing that asks nothing from us but attention."

[Download here to finish reading this section.](#)

### [Theological Framing](#)

"The only members of Creation that show up more often in the Bible than trees are humans. There are nearly 300 references to trees and that number balloons up to nearly 4000 when you consider parts of trees or times when trees are used as symbols. From the original trees of Creation to the Cedars of Lebanon, to the trees on the Mount of Olives, trees are everywhere in Scripture! Trees have long preceded us and have witnessed our part in Creation's story from our earliest days.

[Download here to finish reading this section.](#)





### Stories

Learn about local communities coming together to take action to address Tree Canopies. In this resource, you can find stories of Christians coming together to form projects and programs that benefit the community.

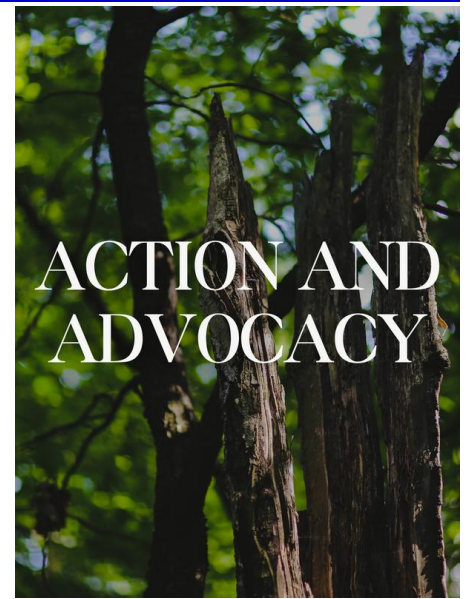
Congregations across the country are recognizing that the care of trees is a vital expression of faith and a tangible way to honor God. By reclaiming church grounds and community spaces for reforestation, these congregations do more than plant seeds; they embody a commitment to the healing and preservation of God's Creation for generations to come.

---

### Action & Advocacy

There are many actions that you and your community to take that are related to tree canopies. The Canopy of Creation Resource has actions you can take in your personal life and in your community at the local, national, and international level to protect God's Creation.

For example, you can advocate for more tree funding. Budgets are moral documents that dictate priorities across all levels of government. You can play a role in addressing tree apartheid by advocating for more community funding to plant trees. You can find the action in the resource.





### Resources

As we consider the role that trees play in our world, we'd like to also invite you to consider the roles that trees can play in worship. We encourage you to find ways to make trees central to your worship service, including worshipping alongside them. The resources in Canopy of Creation are offered as potential resources that can be used in your worship and prayer services.

In this section, access resources such as songs, children's guides, worship resources, and a discussion guide. To access these tree-canopy-related resources, [click here](#).

### Sermon Starters

These sermon starters are meant to be a resource to think about ways that the tree topic can begin to be addressed from the pulpit. They are intended to be prompts to guide preachers into greater reflection on the issue while drawing connections to themes woven throughout the biblical tradition.

Sermon Starter Excerpt on Ezekiel 47:1-12: "Many consider Ezekiel 47 to be utopian literature. It is a part of the "temple vision" in Ezekiel. Like the majority of this book, it is both political and personal. In this vision, we find critique and hope, revelation and possibility with a vision making God's tangible presence undeniable. This vision reveals what can be if those who are hearing (or reading) this story, those who wrestle and immerse themselves in it, dare to see."



[If you love trees, this resource is for you.](#) And if you're ready to let that love widen into justice — into shade shared, healing offered, and neighborhoods made more whole — come on in. Let's grow a canopy of creation together.

In cities across the United States, there is a striking correlation between historic redlining maps and modern day tree canopy maps: precisely those communities that were historically redlined are the same ones that lack tree canopy coverage. As you layer on other social and economic factors, like



Dear Friends,

When the PCUSA Interim Unified Agency decided it was ending World Mission and our service as Mission Co-workers, we felt deep sadness. In 2011, the national structure of the National Presbyterian Church of Mexico had chosen to end its partnership with all of border ministry without consultation, and now, fourteen years later, the national structure of the PCUSA was doing the same.

Amid the uncertainty cast by the national office's decision, Miriam said "Mark, this is an opportunity for faith to flourish." And while the past year has not always been easy, faith, and the incredible outpouring encouragement and support from many faith-filled churches and individuals from both sides of the border, has sustained us. On Saturday May 2, the Presbyteries of Grand Canyon and de Cristo commissioned us to continued service as Mission Co-workers with Frontera de Cristo.

The commissioning service brought us great hope and encouragement after an unfortunate and devastating loss. It fills us with joy to see the commitment of the two presbyteries of Arizona, as well as many churches and individuals and Frontera de Cristo, affirm our call to continue to walk together in search of a more just, peace-filled, and loving world.

We've always known in our heads that the Interim Unified Agency's decision to end World Mission and the ministry to which we sensed a deep call and commitment was not the church's—much less God's—rejection of the ministry we had dedicated our lives to. But during the commissioning service, hearing the sermon from Co-moderator Tony Larson, seeing our partners from Frontera de Cristo, commissioners from both presbyteries as well as representatives from churches from Alabama, Michigan, South Carolina, and Virginia, and feeling surrounded by the Spirit when they laid hands on us and prayed, we knew—not just in our heads, but in our whole beings—that although the Interim Unified Agency had moved on from this particular model of relational and incarnational ministry, the broader church has not.

Thank you for your continued prayers, encouragement, and support to us and to Frontera de Cristo throughout this past year and into the exciting future that God has for us.

Peace,  
Miriam & Mark

PS Read this letter and see more photos of the commissioning service on FDC's [Substack blog](#).



The new price through the coffee and compassion order page will be \$15 per pound, which includes shipping, with a two-pound minimum. The new price reflects the first increase in price in 4 years and only second in 14 years which, when combined with the falling value of the dollar, the 150% increase in the Mexican minimum wage over the last 6 years, and the pandemic-fueled inflation, led to severe cash flow issues for the coffee cooperative.

[Click here to order](#)

---

**A close look at our Earth!**

<https://earthobservatory.nasa.gov/>



### **Farming in Ancient Lake Agassiz**

The glacial lake left a layer of silt and clay in southeastern Manitoba, creating fertile farmland that was divided during 19th-century land surveys and is still farmed today.



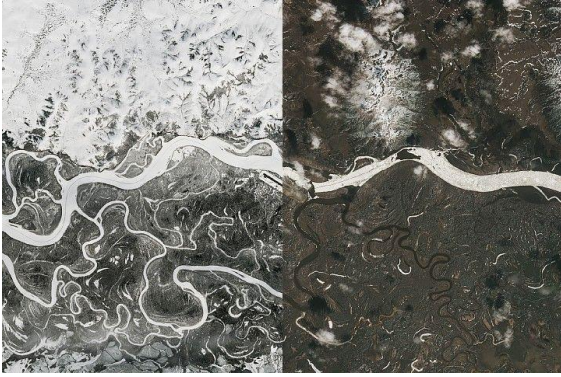
### **Great Balls of Fire**

An astronaut on the International Space Station was surprised to photograph a shower of light streaking through the darkness while looking out of the Cupola.



### **Picturing Earth in a New Light**

A recent analysis revealed where artificial light at night has intensified, as well as where it has diminished.



### [Ice Moves Out of Aniak](#)

Spring melt along Alaska's Kuskokwim River caused ice jams and flooding.



### [America's Emerald Isle](#)

Beaver Island is one in a string of verdant and scenic jewels in a northern Lake Michigan archipelago.

---

## More from NASA Earth Science

- [NASA Calibration Instrument Launches to International Space Station](#)

On Friday, May 15, NASA's Calibration Absolute Radiance and Refractivity Observatory Pathfinder (CLARREO Pathfinder) instrument launched aboard a SpaceX Dragon spacecraft to the International Space Station as part of SpaceX's 34th commercial resupply services mission for the agency.



<http://justiceunbound.org/>

[The Intersections of Faith and Justice](#)

Unbound: An Interactive Journal of Christian Social Justice is an online journal and community that examines, expresses, and encourages commitments to social justice as inspired by the prophetic gospel of Jesus Christ. As both a journal and a forum for conversation, action and community building. Unbound seeks to be an inclusive and welcoming platform, no matter one's

gender, sexuality, race, religion, age, ability or creed. We seek to experience and express different perspectives that further the Kin-dom of God and move us toward the arc of justice.



<https://www.amatteroffaithpodcast.com/>



**MORE LIGHT**  
PRESBYTERIANS

More Light Presbyterians' mission is to center and celebrate the lives, gifts, and leadership of LGBTQIA+ people in the Presbyterian Church (USA) and beyond. We accomplish this by igniting the prophetic witness of our ministry partners and by cultivating relationships rooted in mutual accountability and care. Together, we journey toward God's promised liberation and flourishing for all creation.



<https://sites.google.com/mlp.org/temp/site/home>

## [Welcome to More Light Presbyterians](#)

[More Light Presbyterians is a non-profit organization dedicated to allowing the full participation of LGBTQIA+ people in life, ministry, and witness of the Presbyterian Church \(USA\) and in society. You are welcome here, and you are loved.](#)

[We seek to serve Christian communities and center God's abundance in all we do and all we are.](#)

[We are currently in a stage of transition and will be working on a brand-new website. In the meantime, you may contact us for more information or locate a congregation / campus ministry near you.](#)

[MLP's Response to OVT-044](#)



COVENANT NETWORK  
OF PRESBYTERIANS

<https://covnetpres.org/> Office Address: [Kansas City, MO 64109](#) Contact: [816-605-1031](tel:816-605-1031)

<https://covnetpres.org/find-a-church/>

[info@covnetpres.org](mailto:info@covnetpres.org)

**Engaging. Educating. Equipping.**

Toward a church as generous, just, and truly inclusive as God's grace.

<https://www.covnetpres.org/mission>



[Applications Open for CNP's Second Covenant Fellows Cohort](#)

April 13, 2026

CNP is excited to launch a new **Covenant Fellows Program** designed to cultivate the next generation of church leaders committed to LGBTQIA+ inclusion and advocacy within the PC(USA).

[Read more →](#)



## Where Faith Meets Fellowship...

Explore - Connect – Grow

***Engaging our community in experiences for better living, stronger communities, and spiritual growth and development.***

Sign Up for Our E-newsletter

- [Programs & Events](#)
- [Summer Camp 2026](#)
- [Plan An Event/Retreat](#)
- [Register for Summer Camp](#)
- [ENTER FULL WEBSITE HOME PAGE](#)



**The Learning Current is a Lake Campus Program connecting adult learners of all ages with a variety of courses (lectures, conversations, hands-on workshops and field experiences) building on our mission to make connections for better living, stronger communities and personal and spiritual growth and development.**

Want more information about a program on the schedule?  
Have an idea for future programs? Want to partner with us?

<https://www.campfellowship.org/tlc>

Email: [LakeCampus@campfellowship.org](mailto:LakeCampus@campfellowship.org)

National Audubon Society (<http://www.audubon.org/>)



## [Help Birds With Native Plants](#)

[Bird-Friendly Communities](#)

[Get to Know Native Plants](#)

Whether you're looking to attract birds to your home or increase your awareness outdoors, let this primer be your guide.

[Search our database to find native plants for your ZIP code »](#)

Audubon Society of South Carolina (<http://sc.audubon.org/>)

If you are stuck indoors and need a birdy~distraction, [For the Love of Birds](#) is a beautiful page filled with Audubon South Carolina's favorite bird photos, videos, and stories!

---

The *National Wildlife Federation* - <https://www.nwf.org/>

<https://www.nwf.org/Magazines/National-Wildlife/2026/Winter/PhotoZone/2025-Photo-Contest>

<https://www.nwf.org/nativeplantfinder/>

<https://www.nwf.org/en/Kids-and-Family/Connecting-Kids-and-Nature>

<https://www.scwf.org/>

Keep South Carolina *Wild*



**“We will be known forever by the tracks we leave.”**

This Native American saying conveys the importance of making decisions now to have a long-lasting positive impact for wildlife.

Contact Angi Fuller Wildt at 803-256-0670 or [angi@scwf.org](mailto:angi@scwf.org) to learn more about smarter ways to give that benefit you now and build a legacy for the future!

*Thank you for ensuring that we can continue our work to restore key habitats and advocate on behalf of wildlife well into the future.*



National Environmental Education Foundation

<https://www.neefusa.org/>

<https://www.neefusa.org/nature/>

### ***Animal Migration Activity Guide***

Designed for elementary age kids, this activity guide can be used in a classroom or at home for fun and easy ways to learn about animal migration. [Read More](#)

---

### ***Resources and Opportunities***

Online accessibility to locate trails, parks, recreational facilities, etc:

See links: <https://upcountrysc.com/explore/>

[https://www.traillink.com/?gclid=CjwKCAiAqIKNBhAIEiwAu\\_ZLDkxoXaDsNKO0\\_zubejkEHPI\\_ZpfmizNyOZDehbEIC7AljQwyunrWOpxoCm-oQAvD\\_BwE](https://www.traillink.com/?gclid=CjwKCAiAqIKNBhAIEiwAu_ZLDkxoXaDsNKO0_zubejkEHPI_ZpfmizNyOZDehbEIC7AljQwyunrWOpxoCm-oQAvD_BwE)

SC Health and Planning Tool Kit

<https://www.dph.sc.gov/sites/scdph/files/Library/SCHealthPlanningToolkit.pdf>

Want to find local produce and free range beef and chicken products, check out the website:

<https://certifiedsc.com/>

This website allows a search by SC county and type of products, other options as well. The Certified South Carolina program is an exciting cooperative effort among producers, processors, wholesalers, retailers and the South Carolina Department of Agriculture (SCDA) to brand and promote South Carolina products. Our goal is for consumers to be able to easily identify, find and buy South Carolina products.

---

### ***SC PBS Learning Media for Teachers and Students***

<https://sctv.pbslearningmedia.org/>

Unlock the Power of PBS LearningMedia

Create a free account to gain full access to the website

Save & Organize Resources  
See State Standards  
Manage Classes & Assignments  
Sync with Google Classroom  
Create Lessons  
Customized Dashboard

---

Join in on our Facebook and other Website

God has provided us with a vibrant world in which to live. He wants us to appreciate and take care of His Creation, which includes each of us as well!

<https://www.facebook.com/Stewardship-of-Creation-Foothills-Presbytery-SC-138564229544090/>

---



Celebrating 9+ years!

*..... is environmental education experiences that will  
travel to your site.*

School programs, VBS, Festivals, Church suppers, specific designed Classes, and more!  
For more information, email Manella Calhoun and/or other Board of Directors at  
[crittersandmore8@gmail.com](mailto:crittersandmore8@gmail.com).

Facebook: <https://www.facebook.com/crittersandmoreonthego/>

Website: <https://crittersandmoreonthego.org/>

---