

Farmland Foods



For all of your grilling needs, we have been long time partners with Farmland Foods to supply you with quality, consistency and constant innovation. With 100% satisfaction guaranteed, we carry a wide variety of Black Angus USDA Burgers and Hotdogs, St. Louis Style and Loin Back Ribs, and both, boneless hams. Experience pork and beef cuts that are truly all natural, with no added hormones or steroids, no artificial ingredients and flavor to spare. Every cut is hand trimmed and born right here in the USA. For any and all grilling needs, call your local sales rep today!

BURGERS



Farmland Black Angus Beef products are just that; 100% Black Angus Beef trimmings that 75% lean and are always tender and always juicy. The patties are naturally formed for a home-style look and even cooking.

M80040 5.33 oz. Angus Burger 30 pc.
M80045 8 oz. Angus Burger 20 pc.

HOT DOGS



Farmland All Beef Hot Dogs are made with only tender, USDA inspected cuts of beef that are smoked with real hickory for a rich smokehouse flavor. The black angus franks are made with USDA Choice Black Angus Beef that is mild, meaty and slightly smoky.

PK2215 5-1 Black Angus, Gold Medal 10lb.

LOIN BACK RIBS



Our Farmland St. Louis Style Ribs are all cut from Midwestern butcher type hogs, expertly trimmed of excess fat and

packaged in precise, cost control portions.

PK2800 Pre-Cooked St. Louis 12/1.8 lb.
PK2900 2DN St. Louis Ribs 1/32 lb.
PK2950 Buffet Style, St. Louis 16/2.3 lb.(SO)

BABY BACK RIBS



Our baby back ribs are a great way to fill your plate. Hand trimmed for square ends, a consistent shape & minimal

fat, we can guarantee that each rib is tender & juicy. All ribs are portion controlled.

PK2823 2DN Baby Back Ribs 1/29 lb. cs
PK3051 Thick & Meaty Rib 11/ 3 lb.

CARVEMASTER HAM



This Carvemaster Ham is juicy, fully cooked and smoked over applewood for excellent flavor and texture. It's boneless for higher yields and USDA

approved lean. And its distinctive flat shape holds the ham in place on your cutting board for an easy-to-carve addition to your buffet line.

PK2010 Carvemaster Ham 2/10 lb.

PIT HAM

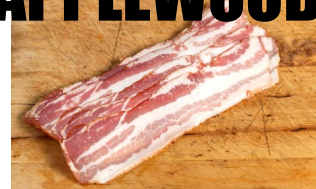


Natural Honey & Brown Sugar Pit Ham cure throughout for natural sweetness. Hardwood smoked for a rich, country

flavor, completely boneless, 100% yield. Whole muscle for consistent quality.

PK2000 14/16 HoneyBrown Pit 2/16.5 lb

APPLEWOOD SMOKED BACON



Farmland Bacon is made fresh from pork bellies that are cured and hardwood smoked for a true bacon flavor. All pork is trimmed and graded to high specifications for leanness, quality & consistency.

PK1610 Applewood Smoked Single Slice 1/15 lb.



Call us at:
Mentor 440-951-6448
Pittsburgh 412-434-6448

www.euclidfish.com
Stay Connected w/ Euclid Fish
@euclidfishco