



Just Sew Studio—Roseville

1789 Lexington Ave No,

Roseville, MN 55113

Phone: 651-644-0010

email:

justsewstudio.roseville@gmail.com



Store Hours
Monday–Friday—10-5 pm
Saturday—9-4 pm
Open Evenings by appointment

Know Your PFAFF—Show off your beautiful PFAFF machine's decorative stitches and couched embellishments when you head out with this handy purse. It's the perfect size to carry your phone and other essentials for a quick shopping trip or a walk with the dog. The purse construction is beginner friendly and don't be afraid of sewing in zippers, this project makes it easy. The class fee includes a kit with materials needed to construct the purse. Instructor will also have various yarns, ribbons, and cords available for couching embellishment.



Friday, May 6—10-2 pm

Kit Fee: \$25

Embroidery Software—Premier +2 Ultra/mySewnet Platinum—Transform an applique SuperDesign into a furry animal with chenille using the digitizing features in your software.

Saturday, May 7—9:30-12:30 pm

****Free/\$50**



Open Studio—Need help with a sewing project? Or, enjoy spending times with friends sewing? Join us in the Studio!

Monday, May 9 OR Monday, May 23—10-3 pm

Class Fee: \$20

Panda in Sweaters—What's cuter than a panda? A panda wearing a sweater! Make this adorable patchwork friend using conventional piecing techniques (not paper piecing)! The sample finishes 24" x 24" and uses a plaid fabric for the sweater but you can get creative with any fabric! Don't like the wall hanging? Maybe a pillow for a little one too.... We will be using the pattern Pandas in Sweaters (yes it is a quilt pattern...) by Elizabeth Hartman (purchase at JSS required).



Tuesday, May 10—10:30-3:30 pm

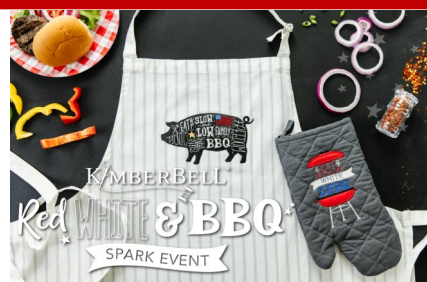
Class Fee: \$30 Pattern: \$12

Owl Security Blankie—Have you seen the book "Sew Penguins, Puppies, Porcupines...oh my!" yet? This book is a collection of 39 baby animal patterns for applique that are great on anything from bibbs to onesies, to quilts. It also includes instructions on creating different quilts, and other baby accessories like this cute security blankie. See how easy it is to create cute applique projects using your sewing machine. This is a great project if you are new to fusible applique. You can choose the owl or any other animal from the book for your blankie.



Friday, May 13—10:30-3:30 pm

Class Fee: \$30 Book: \$27.95



Fire Up the Grill.

It's Time for Some Red, White & BBQ!

Kimberbell Event

Friday, May 20 1:00-5:00 pm

Saturday, May 21—9:00-1:00 pm

Saturday, May 21 - 1:00-5:00 pm

Fee: \$59

Limited Space

Call Now: 651-644-0010

April Showers Table Top Display—April Showers make for sweet May flowers. Stitch a delightful "Made in the Hoop" ode to spring that features a sheltering umbrella, a 'not so menacing' cloud and cheery galoshes ready for any size puddle. We will be using the design called April Showers Table Top Display by Janine Babich (**Purchase required at JSS**). To display it you might also want to get the 3 piece wire stand (**also available at JSS**). Ask for available options when you sign up for class.



Saturday, May 14—9:30-3:30 pm

Class Fee: \$35 Pattern: \$16

Spring—Welcome to My/Our Home Wall

Hanging—This spring welcome friends and family into your home with this striking machine embroidered and appliqued wall hanging. Displayed on an entry door or in your entry way, this wall hanging will be a beautiful addition to your spring décor. We will use the pattern called Welcome to Our Home – Spring by Janine Babich. Finished size is 11" x 44" (**Purchase required at JSS**). First class will be embroidery only. Second class will be construction of the wall hanging.

Tuesday, May 17—11-3 pm & Saturday, May 28—9:30-2:00 pm

Class Fee: \$45 Pattern:\$20




There's more.....

****FREE=Classes are free to customers who purchased their machine or software from Just Sew Studio.**

We want to be prepared for you! Please call or email to register for your class.

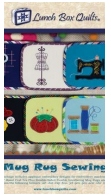
We reserve the right to cancel a class due to low enrollment.

Classes marked  are for Just Sew Studio PFAFF owners

Mug Rugs—Sewing Theme—Stitch up a sewing mug rug for yourself or a friend! Pick from six designs and do whichever one you want! Then add bias binding and you are all set! You might even have time to stitch up two so bring supplies for two! We will be using the design called Mug Rugs Sewing by Lunch Box Quilts (**Purchase required at JSS**). Pattern includes 4 Bosal two sided fusible forms too!

Tuesday, May 24—1-4 pm

Class Fee: \$20 Pattern: \$26



Finish Up Friday—Participants must have completed their list as of this date. Please bring for Show and Tell. Prizes will be awarded at this time.

Friday, May 27—10-3 pm

Class Fee: \$20

Chick's Nite Out—Enjoy an evening sewing with your friends or making new sewing friends. Bring a dish to share.

Friday, May 27—4-9 pm

Class Fee: \$10

All Aboard!!

Next Stop

St Cloud

Convention Center



Minnesota Quilt Show

Friday, June 17—Depart from Cub Parking Lot—8:30 am

Return—5:30 pm Cost: \$55

A Message From the Minnesota Quilters: *At this time (April 20, 2022), COVID community levels for all counties in the Minnesota area are designated as low, and therefore, we recommend our members and visitors stay up to date with COVID-19 vaccines and get tested if they have symptoms. At this risk level, masks are optional. People may choose to mask at any time. People with symptoms, a positive test, or exposure to someone with COVID-19 should wear a mask.*

Call to Register: 651-644-0010