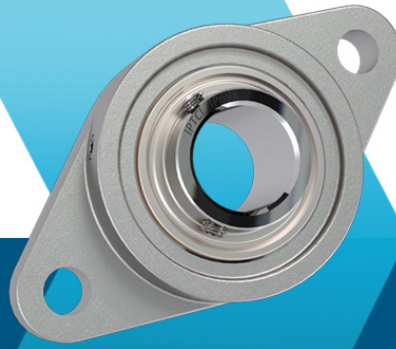


IPTCI[®]

B E A R I N G S



Stand Up to the Most Rigorous Operating Conditions

Our complete line of mounted bearings combines quality, innovation, and affordability. We offer standard bearings for light, standard or medium-duty applications, as well as a full line of corrosion-resistant bearings. IPTCI's innovative, reliable, and cost-effective solutions are supported with exceptional customer service to give you the performance advantage you need.

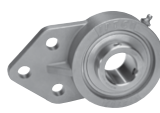
Stainless Steel Mounted Ball Bearing Units



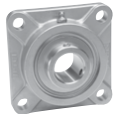
2-Bolt Flange



3-Bolt Flange



3-Bolt Bracketed Flange



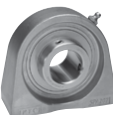
4-Bolt Flange



Piloted 4-Bolt Flange



Pillow Block



Tapped Base Pillow Block



Hanger Unit



Take-Up Unit

Nickel Plated Mounted Ball Bearing Units



2-Bolt Flange



3-Bolt Bracketed Flange



4-Bolt Flange



Piloted 4-Bolt Flange



Pillow Block



Tapped Base Pillow Block



Hanger Unit



Take-Up Unit

Stainless Steel Stand-Off Mounted Ball Bearing Units



2-Bolt Flange Stand-Off



3-Bolt Flange Bracket Stand-Off



4-Bolt Flange Stand-Off

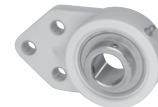


Tapped Base Pillow Block Stand-Off

Thermoplastic Mounted Ball Bearing Units



2-Bolt Flange



3-Bolt Bracketed Flange



4-Bolt Flange



Take-Up Unit



Pillow Block



Tapped Base Pillow Block

Increase Reliability. Decrease Costs.

Corrosion-Resistant Mounted Ball Bearing Inserts



Stainless Steel —
Setscrew (SUC, SSB)



Stainless Steel —
Cylindrical OD (SSER)



Stainless Steel —
Eccentric Collar
(SHC, SNA)



Hard Chrome Coated
(CUC)



Black Oxide
(BUC)

Insert Seal Options

IP69K SERIES SEALED BEARINGS

IP69K Series bearings are ideal for food manufacturers, poultry and meat processors, pharmaceutical manufacturers, bottling companies, canning operations, and car washes. They provide increased bearing life and reduced downtime in any environment where bearings are subject to close-range, high-temperature, high-pressure caustic washdowns and frequent temporary submersions.

A unique triple-lip molded rubber composition provides superior protection against dust and liquid intrusion without the need for external seals or covers.

IP69K series bearings are "lubed for life" with H1 Food Grade grease to eliminate lube holes, grease zerks, and other potential areas of intrusion.



TRIPLE LIP (L3) SEALS

Triple Lip (L3) sealed bearings provide more protection in harsh environments. They are often an ideal choice for dirty, high-moisture applications such as those found in agriculture, turf, and car washes. From 3/4" to 3" bore, and metric sizes 20mm to 60mm, Solve's L3 inserts are available in a wide range of styles and in setscrew locking or eccentric locking collar.



SINGLE LIP SEALS

Single Lip seals are an economical choice to provide basic protection for a bearing. A nitrile rubber seal and slinger help keep lubricant inside the bearing and contaminants out. Also available with a silicone seal and stainless steel slinger for improved protection.



Stainless Steel Shaft Collars & Couplings



Unsplit



Split

Stainless Steel Rod Ends



Female & Male Rod Ends

Stainless Steel Deep Groove Ball Bearings

Stainless steel deep groove ball bearings, made primarily of AISI 440C and AISI 301 stainless steel, offer high corrosion resistance, stability, and durability, especially in humid and caustic environments. They share standard dimensions with regular bearings but are specially suited for demanding, corrosive conditions. Pre-lubricated with FDA-approved grease, these bearings are ideal for the food and beverage industry, where hygiene and resistance to frequent wash-downs are critical.



Stainless Steel Single Row Radial
Deep Groove Ball Bearings



Miniature Single Row Deep
Groove Ball Bearings



Poly Lube Ball Bearings



Poly Lube Insert

Solid Lube Deep Groove Ball Bearings & Inserts

Solve SPL Series Poly Lube deep groove ball bearing use a solid lubricant rather than traditional liquid or grease lubricants. This allows for maintenance-free operation, reduced wear, and longer life as well as making them ideal for the food and pharmaceutical industries where avoiding liquid lubricant contamination is critical.



Scan me to
learn more.

608.328.5600

504 11th Street Monroe, WI 53566

www.precisiondrive.com



24 HOUR EMERGENCY SERVICE

PDC

100% EMPLOYEE OWNED

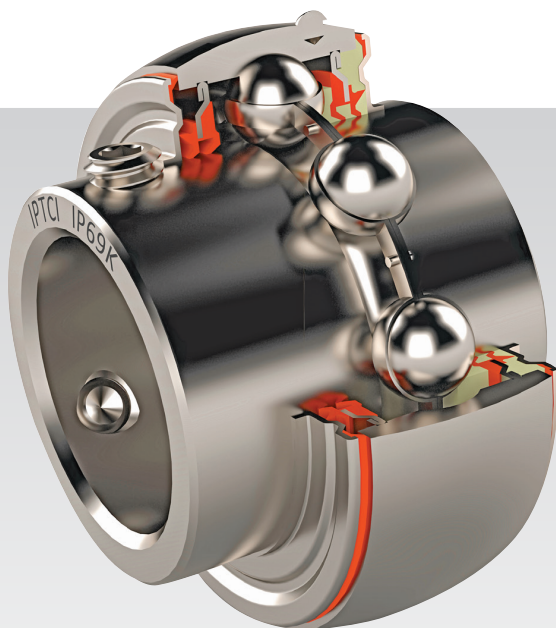
IP69K SERIES

New IP69K Series bearings stand up to dust, liquids and harsh cleaning chemicals.

IPTCI
BEARINGS®

Engineered to stand up to the most rigorous operating conditions — including high-pressure caustic washdowns and other cleaning and sanitizing procedures — the new IPTCI® IP69K Series is a massive leap forward in safety, reliability and sealing effectiveness.

The IP69K Series is ideal for food manufacturers, poultry and meat processors, pharmaceutical manufacturers, bottling companies, canning operations, car washes — any environment where bearings are subject to close-range, high-temperature, high-pressure caustic washdowns and frequent temporary submersions.



IP69K SERIES

- Unique triple-lip molded rubber composition provides superior protection against dust and liquid intrusion.
- “Lubed for life” with H-1 food-grade grease to eliminate lube holes, grease zerks, and other potential areas of intrusion.
- High-quality, corrosion-resistant stainless steel construction extends the life of the bearing.
- No external seals or covers required.
- From an industry leader in mounted bearings and mechanical power-transmission components.
- Specify IPTCI’s IP69K Series for your most challenging applications. Dustproof. Waterproof. Hassleproof.

PRODUCT RANGE

SIZES: 201 – 208 (1/2" to 1-1/2"; 20mm to 40mm). Larger sizes available upon request.

CONFIGURATIONS: Available in all major housing configurations (including Stand-Off Series).

NOMENCLATURE: SUC 205 16 IP69K

IP69K
CERTIFIED



The IP69K Standard

IP: Ingress Protection rating.

FIRST DIGIT: Protection against solids. “6” means dust tight; no ingress of dust.

SECOND DIGIT: Protection against liquids. “9K” means protection against close-range, high-pressure, high-temperature washdowns and steam cleaning.



Scan me to learn more.

608.328.5600

504 11th Street Monroe, WI 53566

www.precisiondrive.com



24 HOUR EMERGENCY SERVICE

PDC

100% EMPLOYEE OWNED