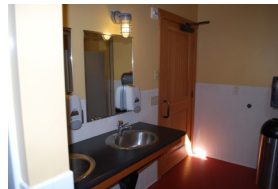


River Ranch-Troop House 5A

Troop House 5A: Capacity of 15 and is an indoor/winterized unit, heat and electric lights. Dining and meeting area with propane fireplace. Kitchen with propane range and refrigerator. Unit cooking equipment. Total building capacity is 30; however either side may be rented individually or together. Each side has its own cooking and complete bathroom facilities. Coffee makers are provided. Two fire rings are available for evening campfires.



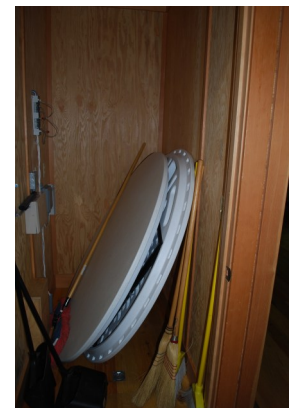
Side A bedrooms, bunks with mattresses. Restrooms are flush toilets and showers and the unit is handicap accessible. Hot and cold running water.



The kitchen area has a refrigerator, propane range, microwave, coffee pot, hot and cold running water, unit equipment. The meeting area has chairs, end tables and a couch that can be moved out of the way to put up tables for eating or program use.

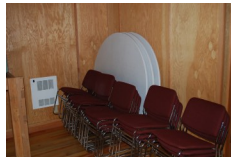


Propane fireplace with thermostat is located in the main living area.

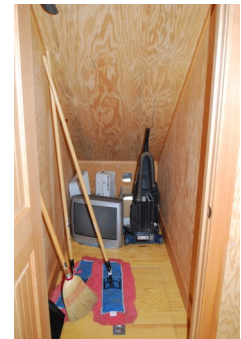


River Ranch-Troop House 5B

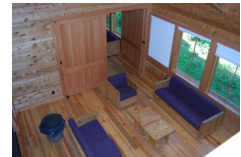
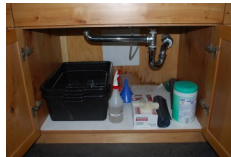
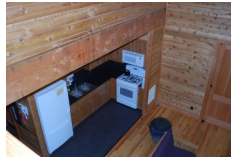
Troop House 5B: Capacity of 15 heat and electric lights, indoor/Winterized unit. Kitchen with propane range and refrigerator. Unit cooking equipment. Dining and meeting area with propane fireplaces. Total building capacity is 30; however either side may be rented individually or together. Each side has its own cooking and complete bathroom facilities. Coffee makers are provided. Two fire rings are available for evening campfires.



Two sleeping areas on the first floor with a third in the loft area. Bunks with mattresses. The storage closet in located in the lower sleeping area closest to the kitchen.



Has a handicap accessible restroom with flush toilets.



The kitchen has a refrigerator, propane range, hot and cold running water, unit equipment and coffee maker. The meeting area has two couches and a chair and tables. These may be moved to bring in the tables and chairs for eating or crafts. There is a propane fireplace.

River Ranch-Troop Houses 1, 2, 3

Troop Houses 1, 2, 3: Capacity of 26 each, indoor/winterized units. Dining and meeting areas with wood stoves, electric heat and electric lights. Kitchen with range and refrigerator. Unit cooking equipment provided. Three sleeping areas. Two that sleep 11 and one that sleeps 4. Bunks with mattresses. Two complete bathrooms. Fire circle. Troop House 1 & 3 are wheelchair accessible. Coffee makers are provided.



Exterior photo of Troop House 1 shows the wheelchair ramp. The meeting area has sofas and chair with 2 end tables. These may be moved to set up tables with folding chairs for eating or doing crafts or program. There is a wood stove and there are stairs on the outside that lead to one of the upstairs sleeping areas.



The kitchen is also on the first floor and has a range, microwave, refrigerator and coffee maker. Unit equipment and tableware.



The sleeping area that sleeps 4 is on the first floor right off of the kitchen meeting room. The two larger sleeping areas are one upstairs and one down. All are bunks with mattresses. Nice large rooms.



There are 2 complete bathrooms in each of Troop Houses 1, 2, 3. Troop House 1 & 3 have wheelchair accessible restrooms. Both restrooms have showers.

Each Troop House has their own fire circle. Troop Houses 1, 2, 3 are located on the Ceilo area hill.

