



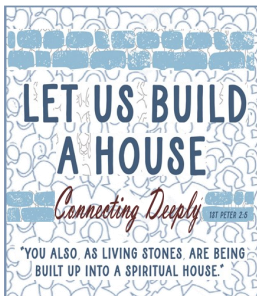
## Worship

- In-person worship—**9:30 AM Sundays**
- Online worship is live-streamed to our [YouTube](#) and [Facebook](#) pages



## Church Council 2025

Laurie Brown (sec'y.)  
Billie Chock (pres.)  
Tim Current (treas.)  
Pat Czock  
Brandt Dinger  
Heidi Goldbeck  
Luke Jeseritz  
Lisa Krause (v. pres.)  
Ryan Tool  
Pastor Tim Wheatley



## Contact us!

Light of Christ Lutheran  
3976 County Line Road SE  
Delano, MN 55328  
(763) 972-2400



[LightOfChristLutheran.com](https://www.LightOfChristLutheran.com)  
[Terri.Reuter@locdelano.com](mailto:Terri.Reuter@locdelano.com)

## YOU ARE INVITED!!!

Experience Light of the World with us at church! Join us for a powerful one-night screening of **LIGHT OF THE WORLD** presented exclusively through Faith Content Network—a trusted organization bringing faith-based films to churches across the nation.

This special movie event is hosted by your church in partnership with Faith Content Network and powered by Brushfire, our official ticketing provider.

### Tickets

All ticket proceeds go directly to supporting the team bringing this film to churches like yours—as well as the filmmakers who created it—helping make events like this possible across the country.

### Get your tickets here:

[Light of the World - Light Of Christ Lutheran Church - Delano, MN - Faith Content Network | Brushfire](#)

**Please note:** Charges will appear on your credit card statement as *Faith Content Network*.

### Refund, Exchange, and Cancellation Policy

Tickets are nonrefundable except for illness, or similar emergencies. No exchanges or refunds after the event date. In case of cancellation, a full refund, including service charges, will be issued.

[Click here to view the movie trailer.](#)

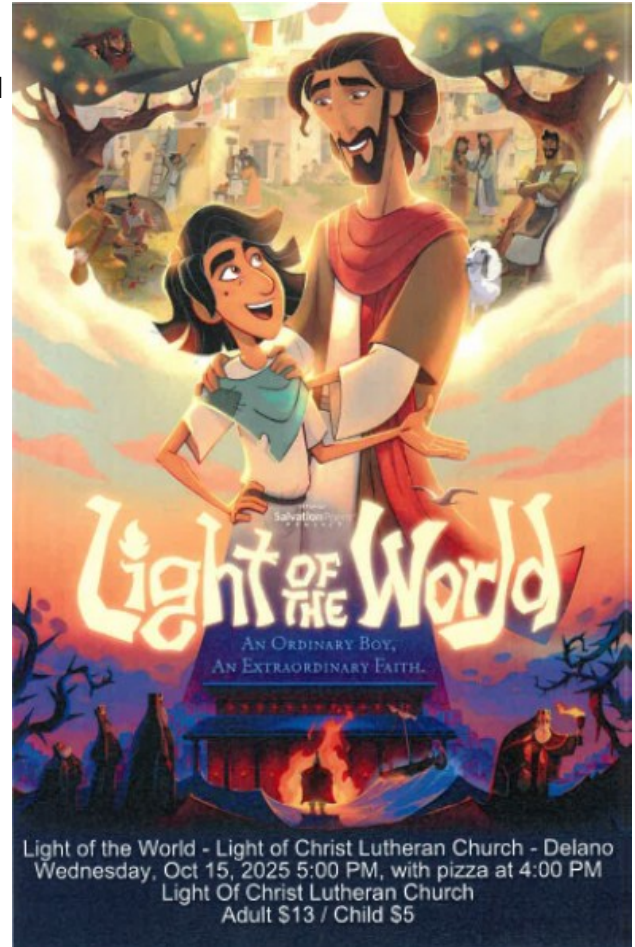
### Reserve pizza and/or popcorn here:

<https://lightofchristdelano.breezechms.com/form/a90f08>

Bring the whole family, pillows & blankets, and a water bottle - no open cans please. We try to have the event as mess free as possible. The movie will start in the sanctuary at 5PM. Join us for pizza dinner and fellowship beforehand starting at 4PM.

We are looking forward to seeing you.

Sabrina Kollect—Director of Children & Family Ministry



## Serving Our Neighbors in Need — Together



Thank you for supporting our **Food Distribution Ministry!** Every month, about **90 neighbors** receive fresh produce, dairy, and other essentials through this vital outreach. Light of Christ is proud to partner with **five other churches** in our region to care for those in need. The next distribution is **Monday, October 13<sup>th</sup>**.

*"Truly I tell you, whatever you did for one of the least of these brothers and sisters of mine, you did for me."* — Matthew 25:40

This ministry is a beautiful expression of **Together We Thrive**—offering our **time, talents, and treasures** to bless others:

- **9:45 AM at Our Father's Lutheran in Rockford** – pack boxes of food. Sign up here: <https://www.signupgenius.com/go/30E0848A9A72AAAF85-food>
- **3:30 PM at Light of Christ** – unload the trailer and prepare for distribution. Sign up here: <https://www.signupgenius.com/go/30E0848A9A72AAAF85-food1>
- **After clean-up** – help **pray over the requests** shared by our neighbors.

Your generous giving and hands-on help make this ministry possible. **Thank you for thriving together in faith and service!**

## Have extra produce from your garden?

The Food Shelf is open to drop off donations from 5:00-6:00 every Tuesday evening and 9:00-11:00 every Thursday morning. If you want to arrange a drop-off at another time, please call the Food Shelf @ 763-972-4455 and leave a message. We will get back to you to arrange a drop-off time.



## Come Join LOC Kids Hope!

LOC has been partnering with an exciting fun program called KIDS HOPE USA and Delano Elementary for the last three school years, and it has been VERY successful. We are excited to have most of last year's volunteer mentors return and are also hoping to add a few more mentors. Volunteer LOC mentors spend **one hour mentoring the same child, one day a week at the elementary school during the school year, and we do our best to work with your schedule.** Delano Elementary staff selects the students. The primary goal of this one hour is **building a friendship relationship with the student, having fun, and to help the child feel more comfortable in their school setting.** We are happy to tell you more about the program if you are interested in joining us. This very successful program has been helping kids for over 25 years and is located in more than 40 states including MN. We look forward to talking with you about Kids Hope. If you are interested, please contact Lona Jose or talk to Terri at the LOC office and she will connect you with us. Thank you!



## Walk-A-Mile for Mental Health Awareness

We had an awesome night of fellowship as we walked a mile together in recognition of the mental health. We had about 150 people participate.

Thank you to the Healing and Wholeness Team for planning this event and providing pizza supper for our group!



## Caring Corner

(from Sue Fink of the Healing & Wholeness Committee)



### 988 vs 911- Which do I call for help?

While most of us are aware of the 988 Suicide and Crisis Lifeline number, many people are still confused about the difference between 988 and 911. So, here is some clarification from various mental health resources.

It has been three years since the 988 Suicide & Crisis Lifeline became available, helping around 16.5 million people nationwide get connected to lifesaving support during a crisis, and since early 2025, monthly contact volume has reached 600,000, twice the monthly use of the previous number assigned!

You can contact 988 via phone call, text or chat, or online at [988lifeline.org](https://988lifeline.org). Calls are answered 24 hours a day, 7 days a week and are completely free and confidential. They offer English or Spanish or can arrange an interpreter.

The trained counselors can de-escalate a crisis, help create safety plans and connect people needing local treatment and other resources. 94% of 988 calls are resolved on the phone without any further intervention. About 4% are referred to local mobile crisis teams for more intensive in-person help or local EMS or law enforcement with the consent of the person involved.

Whether you're facing mental health struggles, emotional distress, alcohol or drug use concerns, or just need someone to talk to, caring counselors are ready to help. You can contact them for yourself or for someone you care about. Caring, trained counselors are ready to listen and help you. Examples:

- Stressed, Feeling overwhelmed
- Problems with your job or business
- Concerns about money
- Relationship concerns
- Losing a loved one
- Figuring out your identity
- Anxiety
- Anger
- Thoughts of suicide
- Concerns about drug or alcohol use
- Emotional impact of physical illness

Call 911 if you need EMS, fire and/or police dispatched to your location. 911 is designed to give immediate, life-saving help for medical emergencies, fire, crimes in progress and other life-threatening emergencies. Examples include:

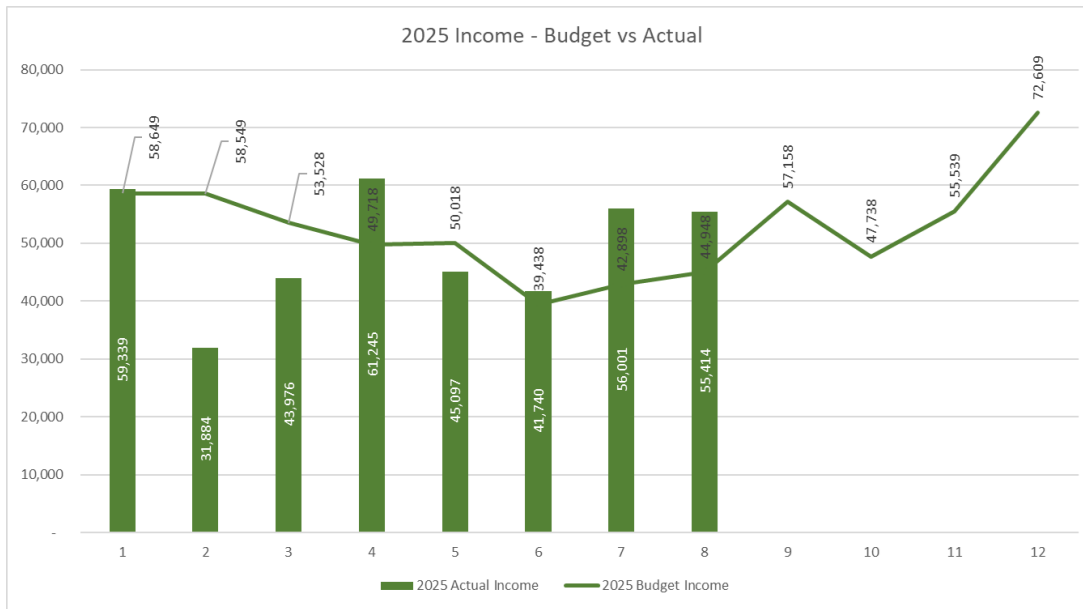
- The person has attempted suicide, is seriously injured or unconscious, and needs medical attention right away.
- The person is experiencing "command hallucinations," telling them to end their life. These hallucinations can be caused by a mental illness, alcohol or drug intoxication, traumatic flashbacks, or other problems like extreme sleep deprivation.
- The person is physically out of control, not responding to words, and endangering their life or others.
- The person is in so much immediate danger that you can't take them somewhere for help.
- They are holding a weapon and threatening to use it against themselves or others.

988 is the appropriate first call for help in all mental and emotional circumstances that don't involve this type of extreme danger.

Also remember that Light of Christ partners with Mental Health Connect, and you can access their Navigator services through our [church website](#) under "Support," call or text 612-642-1220, or Google [navigator@mhconnect.org](mailto:navigator@mhconnect.org). The trained counselors can provide direction on the next step of your journey to mental health and help access treatment, resources, support, and education. This service is less immediate, with a callback within 24 hrs.

You are not alone. Don't hesitate to get help for yourself or someone you care about!

## LOC Monthly Income - Actual versus Budget



## Year To Date Summary – August 2025

- YTD Budget \$397,756  
YTD Actual \$394,696
- Year to Date Actual is **\$3,060** below budget
- August giving above budget – YTD within 1%



### Your Legacy:

#### Take a one-question poll

Question: ***Do you know that Light of Christ has an Endowment Fund?***

And if you're aware of it, ***Do you know it's a tool you can use to create your legacy?*** (Okay, two questions!)

We all wonder how we'll be remembered, and if there's something we can do 'now' to ensure we make a positive impact. That's the purpose of the Endowment Fund. *It grows funding for Light of Christ's future.*

Join us after the **November 2** worship service for a presentation by ELCA Foundation Planned Giving rep Joe Sullivan. Learn how gifts to the church can happen now or later, be cash or stocks, be property or homes, can even be crops not yet grown! Joe will have materials you can take home and discuss with your family as you do estate planning.

Treats provided by the Endowment Fund Committee and Columbarium Board.

### TOGETHER WE THRIVE



Rooted in Faith. Growing in Generosity. Thank you to all who have given so faithfully—your gifts have brought us close to our ministry budget goal. Together we're nurturing vibrant ministry and meeting our missional commitments at LOC. Let's keep growing strong!

## What Is a Memorial Garden?

A memorial garden is a space designed to honor and remember the life of a loved one. A private place for reflection, remembrance and meditation. A beautiful spot creating a serene and reflective environment. Light of Christ is blessed to have our own beautiful setting right outside our entrance. We invite you to take a moment to visit our **Columbarium and Memorial Garden** to share in the tranquility and beauty it has to offer!



## Bible Study/Discussion Group for Moms of Pre-Teens/Teens



As we work to be a community where all feel connected and cared for, we are trying a new time/group for moms of pre-teens and teens. Join us on **Thursdays, October 9<sup>th</sup> and 23<sup>rd</sup> from 8:15-9:45 AM** (right after school drop-off) to meet with some other moms and talk about life, faith and parenting. This will be very laid back with zero prep or expectation. Coffee, creamer and treats provided. We'll discuss future meetings & times with those who attend or express interest...so email Kirsten if you're interested but cannot attend. Please also contact Kirsten about any specific food needs/requests. Hope to see you there!



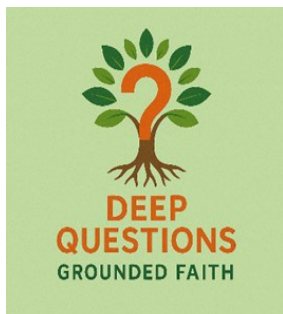
## Become Part of Our Church Family

**New Members Being Received on Sunday, November 16<sup>th</sup>**

If you're interested in joining our church family, we invite you to attend a New Member Information Class on **November 2<sup>nd</sup> at 5:30 PM**. To help us prepare, please let the church office know by October 29<sup>th</sup> if you plan to attend. We're also here to answer any questions you may have.

## Got questions? We all do!

Join with others this Thursday at 9:15 AM or 7:00 PM as we explore Deep Questions. No Bible study experience necessary. And each can participate as you feel comfortable.



Upcoming study topics include:

- **Oct. 9:** "What does it mean to be 'saved'?"
- **Oct. 16:** "What does it mean to live a good life?"

Materials are also available from the Oct. 2 study on "Can I really change—and how?"

Sign-ups on the Welcome Center. Or reach out to Tim Johnson, [tim.johnson@locdelano.com](mailto:tim.johnson@locdelano.com) for more information. All are welcome!



## Attention, Women!

As life and schedules get busy for the fall, please consider taking time out for yourself and joining us for the women's Bible study. Participating in a Bible study is a great way to dive deeper into the word and gain new insights that strengthen our faith.

The women's Bible study will meet **the first and third Mondays of the month, 6:30 – 8:00 PM at LOC**. If you need to leave early at any point that is okay. **We will meet through June. We will not meet in December.** If you can't make it every time that is okay! We want you to come when you can.

We will be doing **two Bible studies by Nancy Guthrie**. The first half of our time together we will study her book *God Does His Best Work with Empty*. The second half we will study her book *Even Better than Eden*.

### *God Does His Best Work with Empty*

Join Nancy Guthrie in discovering why emptiness has never been, and never will be, a problem to God. As Nancy pulls back the curtain on God's work to fill up emptiness as revealed throughout the Bible, you'll experience page after page of grace and hope that your emptiness can and will be filled. You'll begin to see that God really does do His best work with empty—as he fills it with Himself.

Source: [God Does His Best Work with Empty: Guthrie, Nancy: 9781496439697: Amazon.com: Books](#)

### *Even Better Than Eden*

Experienced Bible teacher Nancy Guthrie traces 9 themes throughout the Bible, revealing how God's plan for the new creation will be far more glorious than the original. But this new creation glory isn't just reserved for the future. The hope of God's plan for his people transforms everything about our lives today.

Source: [Even Better than Eden: Nine Ways the Bible's Story Changes Everything about Your Story: Guthrie, Nancy: 9781433561252: Amazon.com: Books](#)

We hope to see you in September! If you are interested in participating, please contact Lindsay Lindall at [lindsay.lindall@gmail.com](mailto:lindsay.lindall@gmail.com)



Grace and Peace to you from God our Father and the Lord Jesus Christ,



When you walk down the hall to the offices you may not notice it, but there on the wall is our Living Charter of Light of Christ. It is signed by our first charter members, it is also dated January 27, 1985. Which means this year is our 40<sup>th</sup> anniversary! Now we decided not to have a great big celebration, you know the one I am talking about: cookbooks, parades, sermon series, and maybe a song written for the occasion. I don't disagree, sometimes churches can get so stuck in the past and what has been done they don't look forward enough! And here at Light of Christ we are very focused on what we are doing for God's kingdom right now. Yet I would like us to have a little celebration, so we are celebrating **November 16<sup>th</sup> at the 9:30 service**. We are trying to invite former employees and all charter members to join us for that day. If you know any, please pass this invitation on. Mostly we want to invite you to come that day and celebrate what God has done here in this place. Where 41 years ago there used to be a field producing grain, today we are a congregation producing many fruits of the Spirit!

The service will include—a special litany, choir, and Praise Team, some special prayers, and of course cake afterwards. And of course, we will also be inviting new members to join us that day because nothing tells about who we are more than reaching out in the gospel and welcoming others to share their gifts. So please make plans to join us the 16<sup>th</sup> for a celebration of God's goodness (and cake).

Pastor Tim Wheatley

## Centralized Sign Up



All of our volunteer sign-ups are in one spot! Scan this QR code or go to this link ([www.linktr.ee/lightofchristvolunteers](http://www.linktr.ee/lightofchristvolunteers)) to view the *LOC Volunteer Sign Up Page*. We hope this will make it easier to find the sign-ups and to volunteer!



## Adult Choir Has Begun!

Weekly rehearsals are Tuesdays 6:30-7:30 PM. All skill levels are welcome! If you are interested or have any questions, talk to LOC's Worship and Music Director, Katie!

## The HOOT Newsletter for September 2025



Come join the Older Wiser Lutherans (OWLS) for fun, fellowship, and faith!!

Happy autumn! We have started a 9-week Bible study series using the book, "Faith - Depending on God" by Dale and Sandy Larsen. All are welcome! Please join us after worship each Sunday in room 101 of the Education wing. You may purchase a book for \$10 through Amazon or Sue Fink can order one for you. Your faith and friendships are sure to grow!

### Calendar of events

**October 30<sup>th</sup>:** LaDonna is planning an unforgettable Halloween party. *See page 6 for more info!*

**November 20<sup>th</sup>:** 5:00 PM supper at the Ox Yoke Inn followed by holiday lights at Sovereign Estate Winery in Waconia.

**December 18<sup>th</sup>:** Christmas potluck and white elephant gift exchange. Start searching your closets for a unique gift, nothing to purchase. This was a "**HOOT**" last year!!

All events are subject to change so let Sue Fink know your email address and phone number in case we need to get news out to everyone. Also, watch the bulletin and Beacon newsletter for updates. Get ready to make lasting friends who share the love and light of Christ.

TOGETHER WE THRIVE



**PLANT** is what we're asking everyone to do. Yes, we're inviting everyone to find a unique or specific way to plant yourself in our LOC ministry. But we're also inviting each and every LOC family to take home one of our special seed packets with a small pot and plant the seeds when you get home. Plant. Water. Sunlight. Grow. Take the opportunity to talk and share about what it takes to grow something like these simple seeds, and how there's some similarities in growing in faith, too. Each packet has a Bible verse with it.

As weeks pass, [email Katie](#) a snapshot of your flower beginning to sprout and grow. But not just any 'ol picture -- one that has the faces of your household in the photo. And a comment about your experience. We'll begin posting these in the Sunday slides.

And watch for more info as the fall unfolds. Plant. Prepare/ Cultivate. Pledge (your first fruits).



### Calling All OWLS (Older Wiser Lutherans) Get Ready for the Owl-O-Ween Spooktacular!

Mark your calendars and dust off your costumes—the Owl-O-Ween Party is swooping in on **October 30 at 12:00 PM** in the LOC Living Room! This event promises a hauntingly good time filled with delicious food, laughter, and festive fun for everyone. Whether you're a fan of tricks or treats, you'll find something to enjoy at this lively celebration.

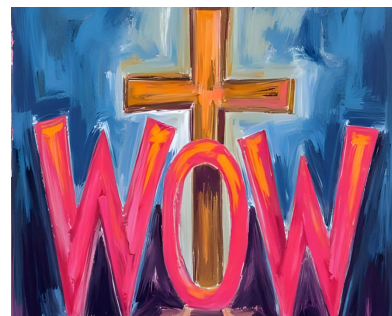
Come hungry and bring your favorite Halloween dish to share (not only will you get to sample a variety of spooktacular food, but you'll also have the chance to win prizes for the most creative costume and the most impressive dish.) And don't forget—there are a few surprise prizes in store, so bring your best game!

This is a perfect opportunity to connect with friends, meet new faces, and enjoy the spirit of Halloween in a welcoming community atmosphere. Please RSVP to LaDonna at [ekernjl@gmail.com](mailto:ekernjl@gmail.com) or by texting 320-212-2583. We look forward to seeing you there in your most boo-hoot-iful attire!



### WOW (Worship on Wednesday)

We had our first WOW (Worship on Wednesday) last week and we're excited to do these Confirmation worship services on the first Wednesday of each month. Thank you to the 9<sup>th</sup> graders for leading our first WOW worship! Thank you also to Annalise Wheatley and Justin Lindall for leading music while Katie was out of town.



All are welcome at these youth-led services that go from 6:15-7:00 pm on the following Wednesdays:

- ◇ **November 5**
- ◇ **December 3**
- ◇ **January 7**
- ◇ **February 4**
- ◇ **April 8 (2<sup>nd</sup> Wed. due to Holy Week)**

We hope you'll join us at WOW!



## Youth Choir Begins in November!

We will once again have youth choir this year for ages 3<sup>rd</sup>-6<sup>th</sup> grade! The first rehearsal will be for Lessons and Carols (December 7<sup>th</sup>) and will take place after worship on **November 9<sup>th</sup>**. Rehearsals are 30 minutes long. Sign up using the QR code or contact Katie with any questions ([katie.kohler@locdelano.com](mailto:katie.kohler@locdelano.com)). The full schedule is on the sign-up form. All levels welcome! You do not need to make every rehearsal to be a part of the choir.



## Confirmation Calendar

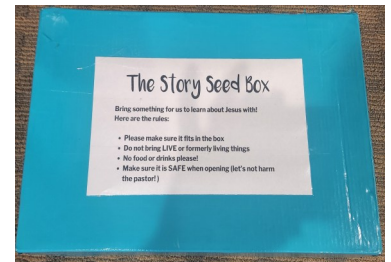
- **10/8/25, 5:45-6:15 PM** = SLICE available ([Sign up here by 2 pm](#) if you plan to attend!)
- **10/8/25, 6:15-8:00 PM** = Confirmation "Teaching Night"
- **10/15/25** = No Confirmation (MEA)



## What's in the Box?

This is a question that Pastor Tim will not be able to answer until he opens the box in worship. During the children's message, Pastor Tim receives the box, opens it and then will connect what is in the box to the children's message. Does your child think they can stump Pastor Tim? Here's the chance to find out! Sign up your child (1 year old-2<sup>nd</sup> grade) for a Sunday when you will be in worship. You can pick up the box the Sunday prior or during the week (the box will be on a shelf in the church library). If you want, your child can bring the item on Sunday and sneak it into the box without Pastor Tim seeing it before worship. Sign up at the link below:

<https://www.signupgenius.com/go/10C0F48A4AB22A4FCCF8-56773893-thebox>



Our Voyagers (1<sup>st</sup>-3<sup>rd</sup> grades) talked about mental health awareness and walked to the Stahlke Bus Company to say thank you for providing bussing to our group.

