



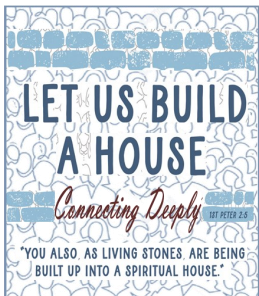
Worship

- In-person worship—
9:30 AM Sundays
- Online worship is
live-streamed to our
[YouTube](#) and
[Facebook](#) pages



Church Council 2025

Laurie Brown (sec'y.)
Billie Chock (pres.)
Tim Current (treas.)
Pat Czock
Brandt Dinger
Heidi Goldbeck
Luke Jeseritz
Lisa Krause (v. pres.)
Ryan Tool
Pastor Tim Wheatley



Contact us!

Light of Christ Lutheran
3976 County Line Road SE
Delano, MN 55328
(763) 972-2400



[LightOfChristLutheran.com](https://www.LightOfChristLutheran.com)
Terri.Reuter@locdelano.com



Free Fresh Produce and Dairy

Monday, October 13th
4:00-5:00 pm

Boxes of fresh produce and dairy products will be available for drive through pickup on a first come, first serve basis at the following locations:

Corcoran

St. Thomas Catholic Church
20000 County Road 10
Corcoran, MN 55340

Rockford

Our Father's Lutheran
3903 Gilbert Ave SE
Rockford, MN 55373

Hanover

Influence Church @ City Hall
11250 5th Street NE
Hanover, MN 55341

Delano

Light of Christ Lutheran Church
3976 County Line Road SE
Delano, MN 55328

Buffalo

Buffalo Covenant Church
1601 Highway 25 North
Buffalo, MN 55313

Maple Grove

Rice Lake Bible Chapel
8801 Rice Lake Road
Maple Grove, MN 55369

For assistance locating a specific site or for questions, please contact us at

NourishingHOPE is a ministry of Our Father's Lutheran Church, in cooperation with area churches. Our vision is to relieve area food insecurity and promote wellness in mind, body, and spirit for people East-Central Wright County. For information on you or your organization partnering with NourishingHOPE, please visit our website at www.ourfatherschurch.org/nourishing-hope.html

You Make This Ministry Possible

Thanks to your ongoing support, our **monthly Food Distribution Ministry** reaches about **90 individuals and families**—providing produce, dairy, and essentials, all wrapped in care and prayer.

"Each of you should use whatever gift you have received to serve others..." — 1 Peter 4:10

It's one more way that **Together We Thrive**—serving others with our **time, talents, and treasures**:

- **9:45 AM at Our Father's Lutheran** – Pack hundreds of boxes. Sign up here: <https://www.signupgenius.com/go/30E0848A9A72AAAF85-food>
- **3:30 PM at Light of Christ** – Unload and distribute food right here. Sign up here: <https://www.signupgenius.com/go/30E0848A9A72AAAF85-food1>
- Stick around to **pray over our neighbors' requests**, offered with faith and hope.

This ministry—and many others—are sustained by your **generosity and engagement**.

Thank you for helping our community thrive in Christ!



OUTREACH

Caring Corner

(from Sue Fink of the Healing & Wholeness Committee)



WOW!!! Our Walk-a-Mile for Mental Health Awareness on October 1st was amazing! Last year we surpassed 100 participants, but this year, close to 150!!!! Thanks to all youth and adults who joined us for our program, walk and free pizza provided by the Healing and Wholeness Committee. You gave \$100.00 in donations which will help cover our annual membership fee for Mental Health Connect.

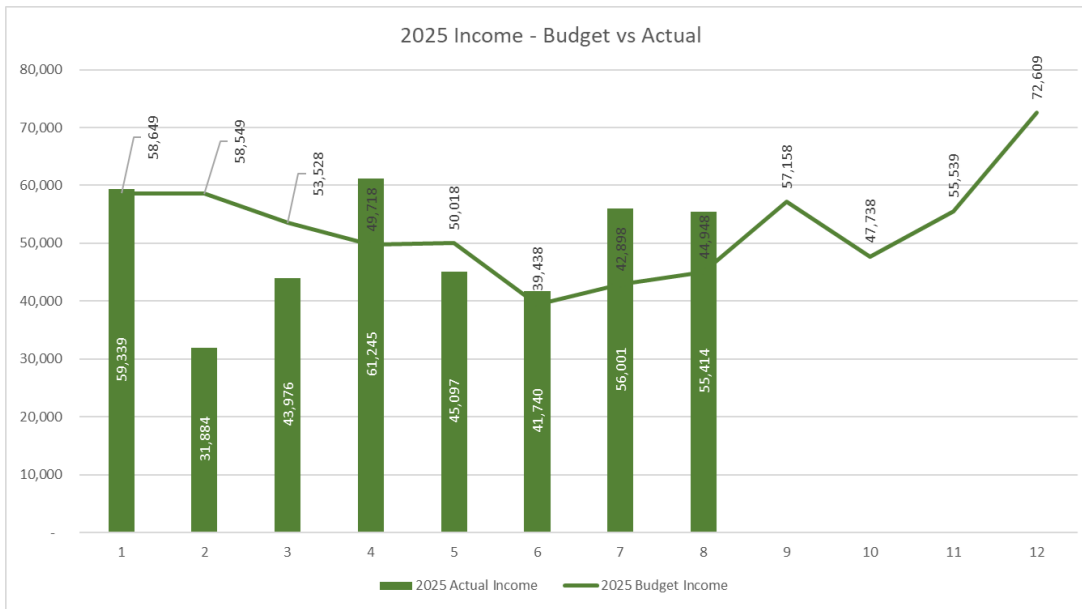
A huge *thank you* to all who helped organize this important event, our Youth ministers: Kirsten and Sabrina; your Healing and Wholeness Ministry team: Rachel Boyack, Lona Jose, Lisa Spencer, Stacy VanCura, Ryan Tool, and Sue Fink; Terri Reuter and Katie Kohler who helped with media and advertising; and other volunteers.

It's hard to believe that we can squeeze a presentation, a mile walk, and feed 150 people in an hour and 15 minutes! But what an important message for our kids, that we stand together for mental health, talk about our faith and our struggles, and treat one another with kindness as we walk-a-mile in their shoes. Strong emotions and mental illness are most often invisible, so we can't know the depth of a person's struggles and how we might affect them by how we treat them. Be kind! Be a friend! Pray for them. Offer to support or help them. If you're the one having anxiety, depression, grief, or other bad feelings, you are not alone, tell someone when you're not OK.

God is Good, ALL THE TIME! All the time, GOD IS GOOD!



LOC Monthly Income - Actual versus Budget



Year To Date Summary – August 2025

- YTD Budget \$397,756
YTD Actual \$394,696
- Year to Date Actual is **\$3,060** below budget
- August giving above budget – YTD within 1%



Your Legacy: The future right now

Gifts to the Endowment Fund grow in perpetuity -- a foundation for Light of Christ's future. Fortunately, annual grant awards fund "the future right now." Endowment Fund grants funded a portion of the Belize adult mission

trip, youth mission projects, the prayer rug in the sanctuary, sound board equipment, after-school programming and parking lot financing.

Join us after the **November 2nd** worship service to discuss building this Fund. Bring your estate planning and tax-related questions for ELCA Foundation Planned Giving rep Joe Sullivan. Treats provided by the Endowment Fund Committee and Columbarium Board.

New Members Being Received on Sunday, November 16th

If you're interested in joining our church family, we invite you to attend a New Member Information Class on **November 2nd at 5:30 PM**. To help us prepare, please let the church office know by October 29th if you plan to attend. We're also here to answer any questions you may have.



TOGETHER WE THRIVE



Rooted in Faith. Growing in Generosity. Thank you to all who have given so faithfully—your gifts have brought us close to our ministry budget goal. Together we're nurturing vibrant ministry and meeting our missional commitments at LOC. Let's keep growing strong!

What Is a Memorial Garden?

A memorial garden is a space designed to honor and remember the life of a loved one. A private place for reflection, remembrance and meditation. A beautiful spot creating a serene and reflective environment. Light of Christ is blessed to have our own beautiful setting right outside our entrance. We invite you to take a moment to visit our **Columbarium and Memorial Garden** to share in the tranquility and beauty it has to offer!



Got questions? We all do!

Join with others this Thursday at 9:15 AM or 7:00 PM as we explore Deep Questions. No Bible study experience necessary. And each can participate as you feel comfortable.



Upcoming study topics include:

- **October 16:** "What does it mean to live a good life?"

Materials are also available from past studies.

Sign-ups on the Welcome Center. Or reach out to Tim Johnson, tim.johnson@locdelano.com for more information. All are welcome!



Bible Study/ Discussion Group for Moms of Pre-Teens/Teens

As we work to be a community where all feel connected and cared for, we are trying a new time/group for moms of pre-teens and teens. Join us on **Thursday, October 23rd from 8:15-9:45 AM** (right after school drop-off) to meet with some other moms and talk about life, faith and parenting. This will be very laid back with zero prep or expectation. Coffee, creamer and treats provided. We'll discuss future meetings & times with those who attend or express interest...so email Kirsten if you're interested but cannot attend. Please also contact Kirsten about any specific food needs/requests. Hope to see you there!

Have extra produce from your garden?

The Food Shelf is open to drop off donations from 5:00-6:00 every Tuesday evening and 9:00-11:00 every Thursday morning. If you want to arrange a drop-off at another time, please call the Food Shelf @ 763-972-4455 and leave a message. We will get back to you to arrange a drop-off time.



Attention, Women!

As life and schedules get busy for the fall, please consider taking time out for yourself and joining us for the women's Bible study. Participating in a Bible study is a great way to dive deeper into the word and gain new insights that strengthen our faith.

The women's Bible study will meet **the first and third Mondays of the month, 6:30 – 8:00 PM at LOC**. If you need to leave early at any point that is okay. **We will meet through June. We will not meet in December.** If you can't make it every time that is okay! We want you to come when you can.

We will be doing **two Bible studies by Nancy Guthrie**. The first half of our time together we will study her book *God Does His Best Work with Empty*. The second half we will study her book *Even Better than Eden*.

God Does His Best Work with Empty

Join Nancy Guthrie in discovering why emptiness has never been, and never will be, a problem to God. As Nancy pulls back the curtain on God's work to fill up emptiness as revealed throughout the Bible, you'll experience page after page of grace and hope that your emptiness can and will be filled. You'll begin to see that God really does do His best work with empty—as he fills it with Himself.

Source: [God Does His Best Work with Empty: Guthrie, Nancy: 9781496439697: Amazon.com: Books](#)

Even Better Than Eden

Experienced Bible teacher Nancy Guthrie traces 9 themes throughout the Bible, revealing how God's plan for the new creation will be far more glorious than the original. But this new creation glory isn't just reserved for the future. The hope of God's plan for his people transforms everything about our lives today.

Source: [Even Better than Eden: Nine Ways the Bible's Story Changes Everything about Your Story: Guthrie, Nancy: 9781433561252: Amazon.com: Books](#)

We hope to see you there! If you are interested in participating, please contact Lindsay Lindall at lindsay.lindall@gmail.com

Grace and Peace to you from God our Father and the Lord Jesus Christ,

When you walk down the hall to the offices you may not notice it, but there on the wall is our Living Charter of Light of Christ. It is signed by our first charter members, it is also dated January 27, 1985. Which means this year is our 40th anniversary! Now we decided not to have a great big celebration, you know the one I am talking about: cookbooks, parades, sermon series, and maybe a song written for the occasion. I don't disagree, sometimes churches can get so stuck in the past and what has been done they don't look forward enough! And here at Light of Christ we are very focused on what we are doing for God's kingdom right now. Yet I would like us to have a little celebration, so we are celebrating **November 16th at the 9:30 service**. We are trying to invite former employees and all charter members to join us for that day. If you know any, please pass this invitation on. Mostly we want to invite you to come that day and celebrate what God has done here in this place. Where 41 years ago there used to be a field producing grain, today we are a congregation producing many fruits of the Spirit!

The service will include—a special litany, choir, and Praise Team, some special prayers, and of course cake afterwards. And of course, we will also be inviting new members to join us that day because nothing tells about who we are more than reaching out in the gospel and welcoming others to share their gifts. So please make plans to join us the 16th for a celebration of God's goodness (and cake).

Pastor Tim Wheatley



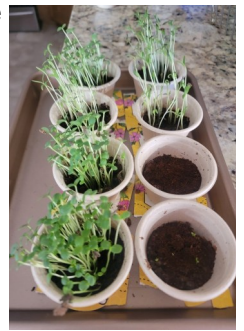
TOGETHER WE THRIVE



Prepare — Cultivate Your Faith

As our *Rooted in Faith. Growing in Generosity.* journey continues, we move from **Planting** to **Preparing** — a time to *cultivate* what God has already begun to grow in us. Just as healthy soil helps roots take hold, our hearts and lives are strengthened through prayer, worship, Scripture, and acts of kindness. This month, we're invited to tend to our faith, nurture compassion, and grow generosity — both in spirit and in action. As we *prepare the soil* of our lives, may we become even more deeply rooted in Christ's love and ready for the growth God is bringing through us and through our church.

Also, as you tend to the small flower/plant you received at church, take a quick update/photo of you with your plant's growth and send that on into Katie at katie.kohler@locdelano.com. We'll begin showing some pics of all of us as a symbol of our growth as a community and homes.



The HOOT Newsletter

Come join the Older Wiser Lutherans (OWLS) for fun, fellowship, and faith!!

Happy autumn! We have started a 9-week Bible study series using the book, "Faith - Depending on God" by Dale and Sandy Larsen. All are welcome! Please join us after worship each Sunday in room 101 of the Education wing. You may purchase a book for \$10 through Amazon or Sue Fink can order one for you. Your faith and friendships are sure to grow!



Calendar of events

October 30th: LaDonna is planning an unforgettable Halloween party. *See page 6 for more info!*

November 20th: 5:00 PM supper at the Ox Yoke Inn followed by holiday lights at Sovereign Estate Winery in Waconia.

December 18th: Christmas potluck and white elephant gift exchange. Start searching your closets for a unique gift, nothing to purchase. This was a "**HOOT**" last year!!

All events are subject to change so let Sue Fink know your email address and phone number in case we need to get news out to everyone. Also, watch the bulletin and Beacon newsletter for updates. Get ready to make lasting friends who share the love and light of Christ.



Centralized Sign Up

All of our volunteer sign-ups are in one spot! Scan this QR code or go to this link (www.linktr.ee/lightofchristvolunteers) to view the *LOC Volunteer Sign Up Page*. We hope this will make it easier to find the sign-ups and to volunteer!



Adult Choir Has Begun!

Weekly rehearsals are Tuesdays 6:30-7:30 PM. All skill levels are welcome! If you are interested or have any questions, talk to LOC's Worship and Music Director, Katie!

Calling All OWLS (Older Wiser Lutherans) Get Ready for the Owl-O-Ween Spooktacular!

DATE: October 30th

TIME: 12:00 (Noon)

WHERE: Light of Christ Living Room

ATTIRE: Halloween costume (or be at the mercy of LaDonna who will provide something to wear)

BRING: Your favorite Halloween dish to share (potluck event)

**Or a favorite dish with a Halloween name/description) i.e. brownies become "graveyard dirt," hotdogs are "yummy mummies," or add an adjective like *spooky*, *creepy*, *eerie* or a Halloween character to the title like "spooky monster meatloaf")

WHY: To enjoy an Owl-O-ing good time

RSVP: ekernjl@gmail.com; 320-212-2583



WOW (Worship on Wednesday)

We're excited to have our WOW (Worship on Wednesdays) Confirmation worship services on the first Wednesday of each month. All are welcome at these youth-led services that go from 6:15-7:00 pm on the following Wednesdays:

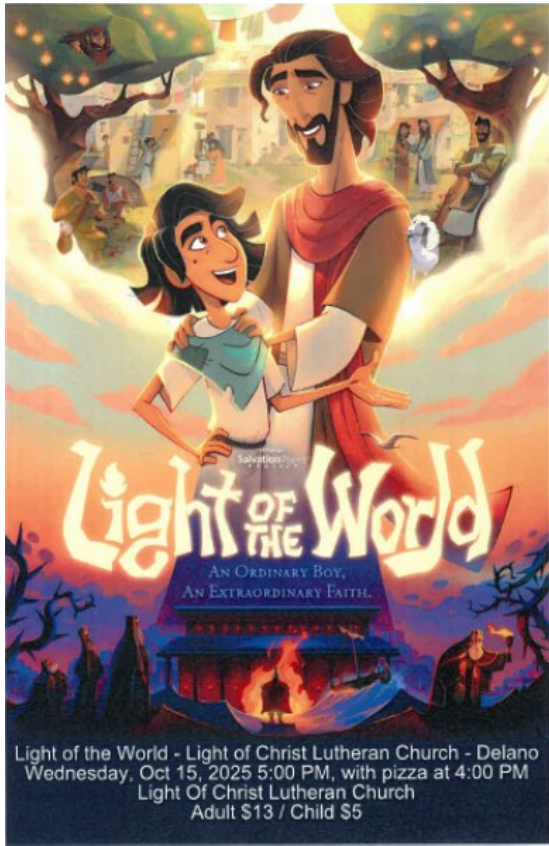
- ◇ **November 5**
- ◇ **December 3**
- ◇ **January 7**
- ◇ **February 4**
- ◇ **April 8** (2nd Wed. due to Holy Week)

We hope you'll join us at WOW!



Candles

Throughout the year, we use candles for various events such as retreats, prayer stations, teaching nights, etc. If you have any tea light candles or pillar candles (any size but nothing in glass jars, please) that you would like to donate to church, please talk to Kirsten. Thank you!



YOU ARE INVITED!!!

Experience Light of the World with us at church! Join us for a powerful one-night screening of *LIGHT OF THE WORLD* presented exclusively through Faith Content Network—a trusted organization bringing faith-based films to churches across the nation.

This special movie event is hosted by your church in partnership with Faith Content Network and powered by Brushfire, our official ticketing provider.

Tickets

All ticket proceeds go directly to supporting the team bringing this film to churches like yours—as well as the filmmakers who created it—helping make events like this possible across the country.

Get your tickets here:

[Light of the World - Light Of Christ Lutheran Church - Delano, MN - Faith Content Network | Brushfire](#)

Please note: Charges will appear on your credit card statement as *Faith Content Network*.

Refund, Exchange, and Cancellation Policy

Tickets are nonrefundable except for illness, or similar emergencies. No exchanges or refunds after the event date. In case of cancellation, a full refund, including service charges, will be issued.

[Click here to view the movie trailer.](#)

Reserve pizza and/or popcorn here:

<https://lightofchristdelano.breezechms.com/form/a90f08>

Bring the whole family, pillows & blankets, and a water bottle - no open cans please. We try to have the event as mess free as possible. The movie will start in the sanctuary at 5PM. Join us for pizza dinner and fellowship beforehand starting at 4PM. We are looking forward to seeing you.

Sabrina Kolleck—Director of Children & Family Ministry

Confirmation Calendar

- 10/15/25 = No Confirmation (MEA)
- 10/22/25 = Teaching night
- 10/24-10/26/25 = Confirmation retreat at Camp Wapo
- 10/29/25 = Teaching night



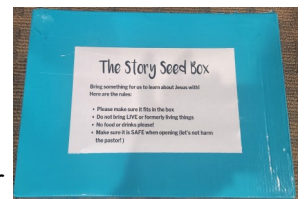
Youth Choir Begins in November!

We will once again have youth choir this year for ages 3rd-6th grade! The first rehearsal will be for Lessons and Carols (December 7th) and will take place after worship on **November 9th**. Rehearsals are 30 minutes long. Sign up using the QR code or contact Katie with any questions (katie.kohler@locdelano.com). The full schedule is on the sign-up form. All levels welcome! You do not need to make every rehearsal to be a part of the choir.



What's in the Box?

This is a question that Pastor Tim will not be able to answer until he opens the box in worship. During the children's message, Pastor Tim receives the box, opens it and then will connect what is in the box to the children's message. Does your child think they can stump Pastor Tim? Here's the chance to find out! Sign up your child (1 year old-2nd grade) for a Sunday when you will be in worship. You can pick up the box the Sunday prior or during the week (the box will be on a shelf in the church library). If you want, your child can bring the item on Sunday and sneak it into the box without Pastor Tim seeing it before worship. Sign up at the link below: <https://www.signupgenius.com/go/10C0F48A4AB22A4FCCF8-56773893-thebox>



Confirmation Annual Game of Bonkers



**October 8th,
2025**



**9th Grade
Confirmation
Prayer Stations
10/8/25**

