



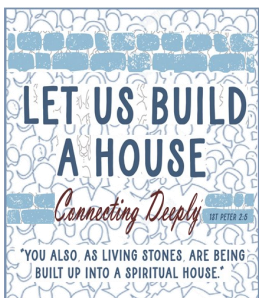
## Worship

- In-person worship—  
9:30 AM Sundays
- Online worship is  
live-streamed to our  
[YouTube](#) and  
[Facebook](#) pages



## Church Council 2026

Fred Caslavka  
Pat Czock (sec'y.)  
Brandt Dinger  
Heidi Goldbeck  
Luke Jeseritz (treas.)  
Lisa Krause (pres.)  
Justin Lindall  
Erin Olson  
Ryan Tool (v. pres.)  
Pastor Tim Wheatley



## Contact us!

Light of Christ Lutheran  
3976 County Line Road SE  
Delano, MN 55328  
(763) 972-2400



[LightOfChristLutheran.com](http://LightOfChristLutheran.com)  
[Terri.Reuter@locdelano.com](mailto:Terri.Reuter@locdelano.com)

There's still time to register for VBS!

## An adventure you'll fall for!



New friends 🌱 Amazing experiments 🌱 Creative games  
Super-fun snacks 🌱 Surprising adventures 🌱 Incredible music

## Light of Christ Lutheran Church

### Sunday, July 12<sup>th</sup> – Wednesday, July 15<sup>th</sup>

**Sunday: 4:30PM – 7:15PM**

**Monday–Wednesday: 5:00PM – 7:15PM**

**Register online**

<https://lightofchristdelano.breezechms.com/form/RainforestFalls>



## We'd love your help with VBS!

Use these links below to get involved:

Volunteer sign-up at this link: <https://www.signupgenius.com/go/10C0A44A5AD2FA4F4C34-62220163-vbs2026>

VBS Supply list sign-up at this link: <https://www.signupgenius.com/go/10C0A44A5AD2FA4F4C34-64213482-vbs2026>





## Thank You to All Our June LOC Food Shelf Volunteers

**Thank you** to our 24 LOC June food shelf volunteers. Your help provides so much to those who need our help. Thank you also to those who manage

the food shelf including our LOC member JoMarie Williamson. It is so well-managed. Thanks also to those who contribute food and money to keep our Delano food shelf running well. Our next LOC volunteer month will be December. We look forward to working with you!

**THANKYOU!**

## Nourishing Hope – Monday, July 13

Our next **Nourishing Hope Food Distribution** is **Monday, July 13**, and this month **Light of Christ** is responsible for helping set up before the food arrives from Second Harvest. We'd love to have plenty of helping hands!

There are **four ways to serve**:

- 1. Early Morning Setup (7:30–8:00 AM)** – Join us at **Our Father's Lutheran Church in Rockford** to help unload and organize the food pallets, set up the roller system, and prepare everything before the semi-truck from Second Harvest arrives.
- 2. Food Boxing (9:45 AM)** – Help volunteers from our partner churches sort and pack hundreds of boxes of fresh food for area families. <https://www.signupgenius.com/go/30E0848A9A72AAAF85-food>
- 3. Milk Transport (3:30 PM)** – We need **one volunteer** to pick up Light of Christ's milk from the refrigerated trailer at Our Father's Lutheran and transport it to the Light of Christ parking lot for distribution. Kurt, who normally handles this, will be out of town this month. <https://www.signupgenius.com/go/30E0848A9A72AAAF85-63814208-food>
- 4. Food Distribution (3:30 PM)** – Help welcome neighbors and distribute food in the Light of Christ parking lot. <https://www.signupgenius.com/go/30E0848A9A72AAAF85-food1>



If you can help with any of these opportunities, please contact **Tim Johnson** or sign up using the volunteer links above. Thank you for helping Nourishing Hope provide fresh food and hope to our neighbors each month!

## Volunteer Opportunity



The Mission and Evangelism Committee is seeking volunteers who would like to go to the Estates at Delano and spend time with the residents. Volunteers would be able to choose from a variety of activities such as playing Bingo, doing female residents' nails, playing cards or other games, hosting a movie afternoon or night, doing projects, gardening, or other activities of their choice, as new ideas arise. Participants would need to have a background check done prior to volunteering. The activities director will be out on maternity leave soon so this would be a great time to have people able and willing to provide activities while she is out. Time commitment would vary according to your availability. Contact Lisa Spencer for more information: 612-741-7504 or [lisaspencer864@gmail.com](mailto:lisaspencer864@gmail.com).

## Neighbors in Need: Help Us Meet a Growing Need



Each month, Light of Christ partners with local immigrant aid ministries to provide simple but life-giving bags of rice and beans for families experiencing food insecurity. Last month, every package we prepared was gratefully distributed—but the need was even greater. More than **40 additional households** were still waiting for assistance after our supply was exhausted.

Together, we can help change that.

We invite you to bring **bags of rice, dried beans, and bottles of vegetable or cooking oil**, one of the items our ministry partners say is most urgently needed. With your generosity, we hope to significantly increase the number of families we can serve.

Then join us on **Sunday, July 12, at 10:30 AM**, following worship, in the Living Room, as we package the food together for distribution.

As Scripture reminds us:

**"Share with the Lord's people who are in need. Practice hospitality." Romans 12:13**

Thank you for helping our neighbors experience Christ's love in practical, compassionate ways.

## **IN CASE YOU MISSED SEEING YOUR LETTER...**

Dear Members and Friends of Light of Christ,

As your Church Council, we want to share an important update regarding the parking lot project and invite your partnership in bringing this work to completion.

For many years, our congregation has known that the parking lot needed significant repair. After careful study, consultation, and congregational approval, construction began this year with the goal of providing a safe, durable parking lot that will serve our church well for many years to come.

As excavation progressed, members of the Executive Council met on-site with the contractor to review the conditions firsthand. In several areas, large construction vehicles were sinking well beyond the anticipated excavation depth\*, providing visible evidence that the existing soils would not provide a stable foundation for a long-lasting parking lot.

We also sought guidance from Council member Brandt Dinger, whose professional work includes managing major construction projects such as schools, churches, and site improvements. Based on the conditions observed and his expertise, it became clear that additional excavation was necessary to reach a solid, stable clay base.

This was not a decision the Council made lightly. We spent time in prayer, careful discussion, and discernment, including consultation with Pastor Tim. No one was pleased to learn that additional work was necessary, but after reviewing the conditions on-site and receiving trusted professional guidance, we concluded that investing in a proper foundation was the most responsible long-term decision. In Minnesota, freeze-thaw cycles place significant stress on parking lots. A weak base can lead to settling, cracking, and costly repairs far sooner than expected. By addressing the issue now, we are investing in a parking lot that should serve our ministry well for decades and help avoid far greater repair and replacement costs in the future.

As work has continued, this necessary additional excavation and base preparation have resulted in approximately \$60,000–\$70,000 in additional project costs.

The good news is that this need is within reach.

We are deeply grateful for the generosity this congregation has shown throughout the parking lot project and in supporting the ministry of Light of Christ. This project is about more than pavement. It is about creating a safe and welcoming space for worship, funerals, weddings, education, fellowship, and community life for years to come.

Light of Christ is blessed to have approximately 222 households who support the ministry of our congregation. If every household were able to contribute an additional gift of \$300, together we would generate more than \$66,000—enough to fund the additional project costs and avoid taking on additional debt.

We also recognize that a gift of \$300 is not possible for everyone. Every household's financial circumstances are different, and we understand that some may not be able to make an additional contribution at this time. Please know that any gift—large or small—will help move us closer to our goal. Some households may be able to contribute \$50, \$100, or another amount that fits their circumstances, while others may be able to give more than \$300. What matters most is that we come together as a congregation, each participating as we are able.

We are grateful for the faithful generosity that sustains the ongoing ministry of Light of Christ throughout the year. As you prayerfully consider a gift toward the parking lot project, we encourage you, if possible, to make this special additional contribution while continuing your regular support of the congregation's mission and ministry through your ongoing offerings.

If you choose to make a gift toward this effort, please note "**Parking Lot**" on your check, offering envelope, or electronic contribution so that your gift may be designated appropriately.

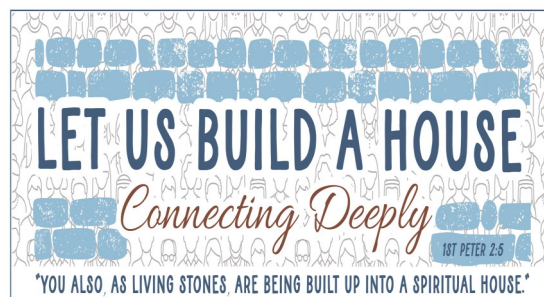
We simply ask that you prayerfully consider what additional gift you might make toward this effort.

Thank you for your continued generosity, faithfulness, and commitment to the mission of Light of Christ. We are grateful for all that God has accomplished through this congregation and confident that, together, we can complete this project and continue building a strong foundation for ministry for years to come.

With appreciation for our ministry together,

Your 2026 Church Council,

*Lisa Krause  
Luke Jeseritz  
Heidi Goldbeck  
Pat Czock  
Ryan Tool  
Brandt Dinger  
Erin Olson  
Fred Caslavka  
Justin Lindall*



\* A compaction roll test was done, and the base was sinking well below industry standards.



## San Diego High School Mission Trip Prayer Partners

Each summer we ask our congregation family to pray for our mission trip participants as we prepare and then also while we are on our trip. We give each prayer partner an itinerary so that they know what we're up to each day and then encourage them to attend our return worship service after the trip (which is on **July 26<sup>th</sup>** this year). This summer we are looking for 43 people who will commit to praying for our HS youth and adults as we head to San Diego to serve, grow and learn from **July 19<sup>th</sup>-24<sup>th</sup>**. [Click here to complete the short form](#) to indicate your interest. Thanks for your partnership in ministry!

## Worship with Confirmation Faith Statements

Over the summer, the upcoming 10<sup>th</sup> grade confirmands will be giving their faith statements. Those worship services are:

- Sunday, July 12 at 9:30 AM
- Wednesday, August 12 at 6:30 PM
- Sunday, August 16 at 9:30 AM
- Sunday, September 20 at 9:30 AM



Please attend or watch online to support these youth sharing their faith!



## Do You Like to Play Board Games?

Join Pastor Tim again this summer for game nights on **Wednesdays, July 29 and August 19 from 6:00-8:00 PM** in the fellowship hall! He will bring a selection of his games, or you are welcome to bring your own. All ages are welcome!

## 2027 Offering Envelopes

A growing number of members contribute weekly or monthly using electronic giving methods. However, we understand that many prefer placing an offering envelope in the plate. To eliminate the ***purchased-but-unclaimed*** envelopes that are wasted, we're asking each family that ***wants*** pre-printed envelopes to request them from the church office by **AUGUST 14<sup>th</sup>**. Either email [Terri in the church office](#) or call 763-972-2400. This "OPT IN" method will greatly benefit the office supplies budget. Thank you!



*If you've already been receiving pre-printed envelopes each year, you will remain on the list until you request otherwise.*

## Free Outdoor Concert

Roe Family Singers

August 13<sup>th</sup> 6-7:30PM

Bring Your Family & A Chair  
Snacks and Drinks for Purchase

---

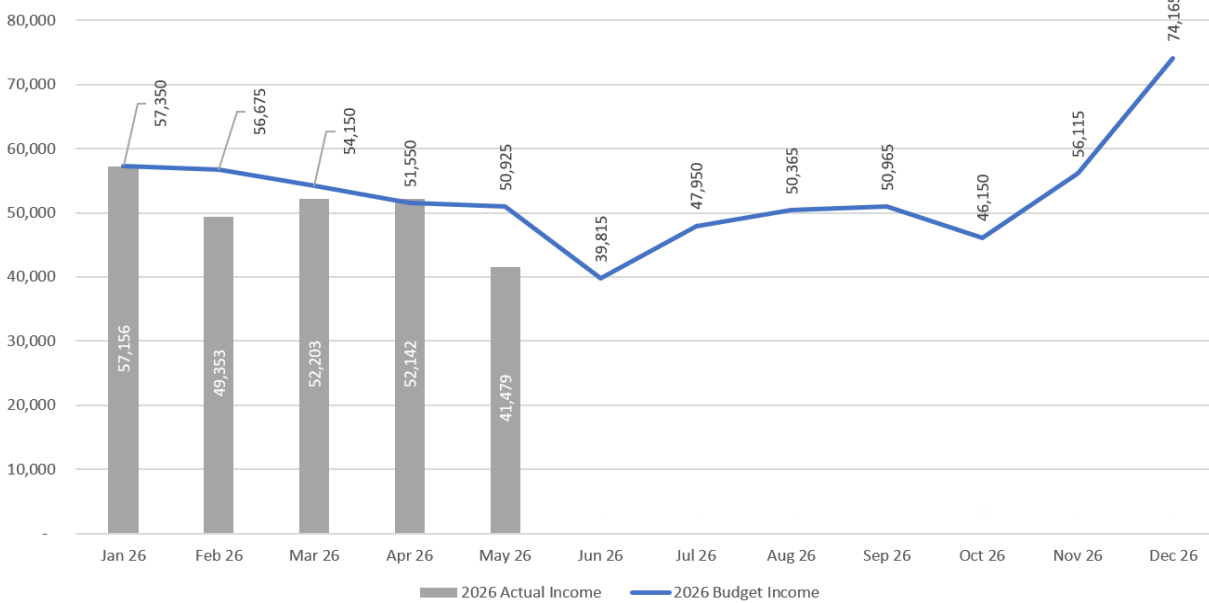
2019 Entertainers of the Year, Best Band, and Best Band Overall, BMAI  
2018 Entertainers of the Year AND Album of the Year, BMAI  
2017 Jig-dance Competition Winner Old-Time Music & Ozark Heritage Festival, Kim Roe  
2016 Entertainers of the Year, BMAI  
2012 MBOTMA Duet Competition Winners




Delano United Methodist Church  
3310 County Line Road

## LOC Monthly Income - Actual versus Budget

2026 Income - Budget vs Actual



### YTD Summary May 2026

- YTD Budget \$270,650
- YTD Actual \$252,334
- Year to Date Actual is **\$18,316** below budget

## Mission in Motion

Every gift helps advance worship, care, outreach, and connection in our church and community. Together, we are sharing the Light of Christ in meaningful and tangible ways.



## The Generous Life: Six Practices that Shape Our Faith



### The Generous Life: *Be Intentional*

At Light of Christ, we believe generosity is not just something we do—it's part of who we are becoming in Christ. Throughout this series, we're exploring **six practices that shape a life of generosity**.

We begin with this: **Be Intentional**.

Generosity rarely happens by accident. It grows when we pause, reflect, and choose it.

In Scripture, generosity is always connected to the heart—our priorities, our trust, and our awareness of God's work. Being intentional means we don't leave giving to chance or convenience. Instead, we take time to prayerfully consider: *How is God inviting me to live generously?*

#### What this looks like in everyday life:

Someone sets aside time—perhaps at the start of a new year or a new chapter in life—to think about their giving. They reflect on God's blessings, the church's mission, and their own role in it. No longer giving through "happenstance." They make a plan, not out of pressure, but out of purpose. Intentional generosity is the first step toward a deeper, more meaningful life of faith.

**"Where your treasure is, there your heart will be also." – Matthew 6:21**

*(We will feature a new practice every couple of weeks)*

## The GIVING CORNER



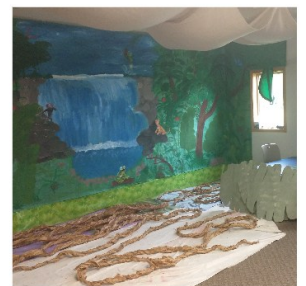
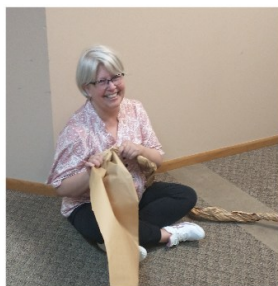
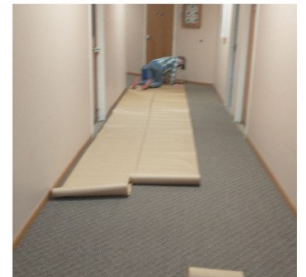
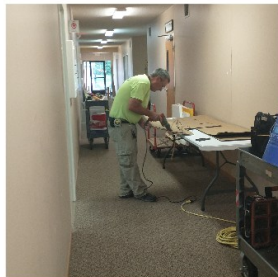
### Qualified Charitable Distributions (QCDs) from an IRA

If you are age 70½ or older and you give to charity each year, a Qualified Charitable Distribution, or QCD, can be a really clean way to do it. A QCD is a direct gift from your IRA to an eligible public charity. Because the money goes straight from the IRA to the charity, it can be excluded from your taxable income, which is often more valuable than taking a deduction, especially if you use the standard deduction. QCDs can also count toward required minimum distributions for those who have them, which helps some families give without increasing their reported income. The key is that it must be done as a direct transfer and it must go to a qualifying public charity, not a donor advised fund or private foundation. A quick check with a tax professional can confirm whether this fits your situation.

*Article Submitted by Brad L. Spencer, CPWA®*

# CHILDREN, YOUTH & FAMILY NEWS

VBS volunteers are already hard at work to make it a magical place to learn about God.



**Wapo Seeds  
Weekend  
6/19-21/2026**



**Wapo Seeds  
June 19-21, 2026**



**Wapo Seeds  
10 girls,  
3 boys**



**Wapo  
Week  
Long  
(June  
21-26)**



**And Wapo  
One Day  
6/24/26**

