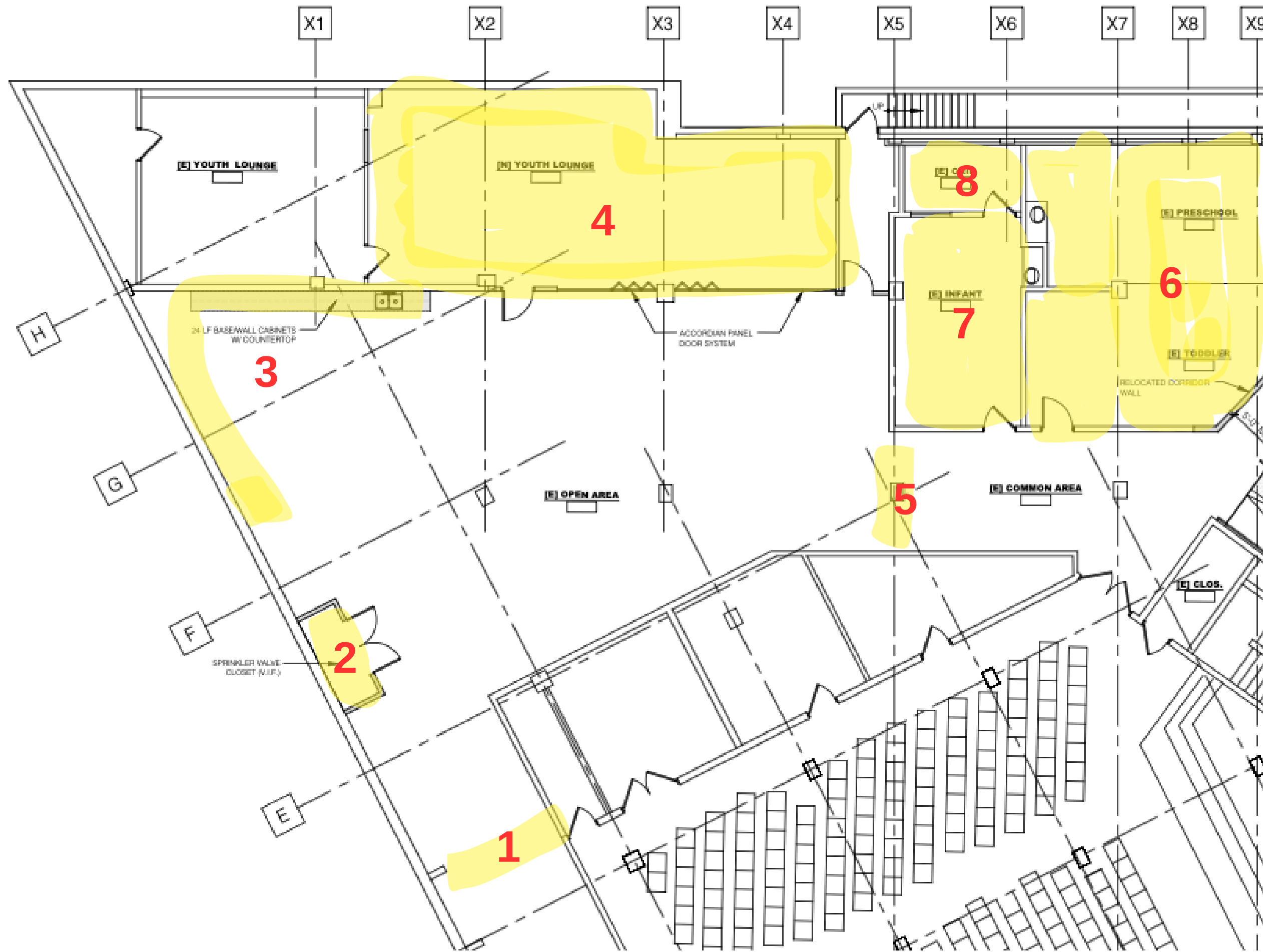


# Overall Floorplan

# Children's Wing

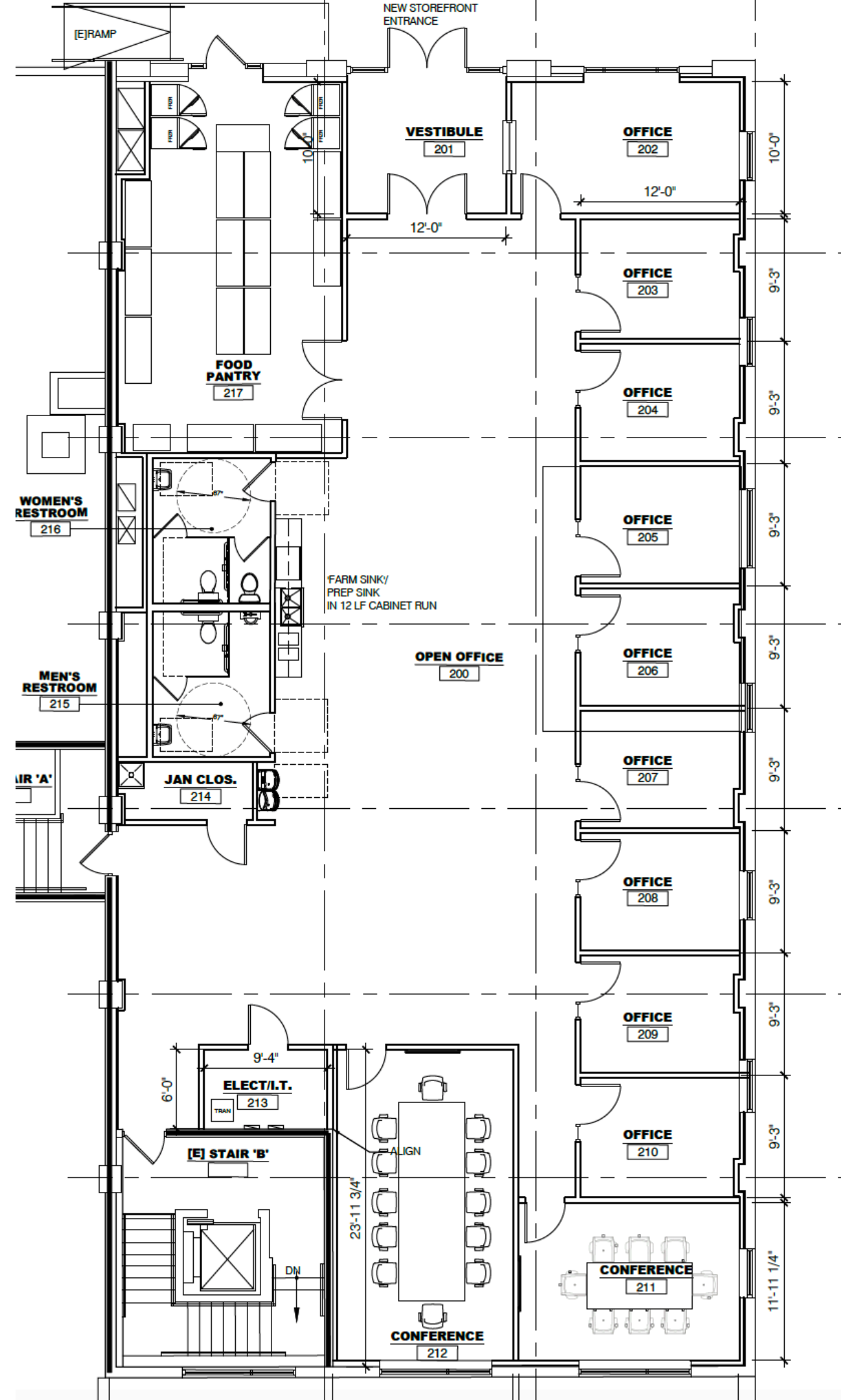
- 1: Wider ramp
- 2: Smaller elevator closet
- 3: Wider doorway
- 4: Separate hallway for upstairs access
- 5: Eliminate outside access
- 6: New classroom
- 7: New storage room
- 8, 9: New classrooms
- 10: Larger classroom
- 11: New ADA restroom





# Coffee/Youth Area

- 1: Remove doors
- 2: Closet for sprinkler system
- 3: Coffee bar (location TBD)
- 4: New Large Youth Rm
- 5: Remove door & wall
- 6: Storage/finance
- 7: Library
- 8: Nursing room



# Upstairs Office Area