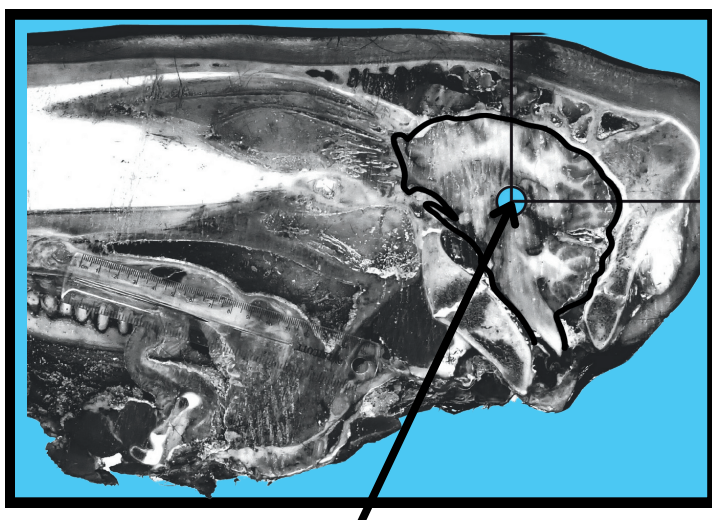
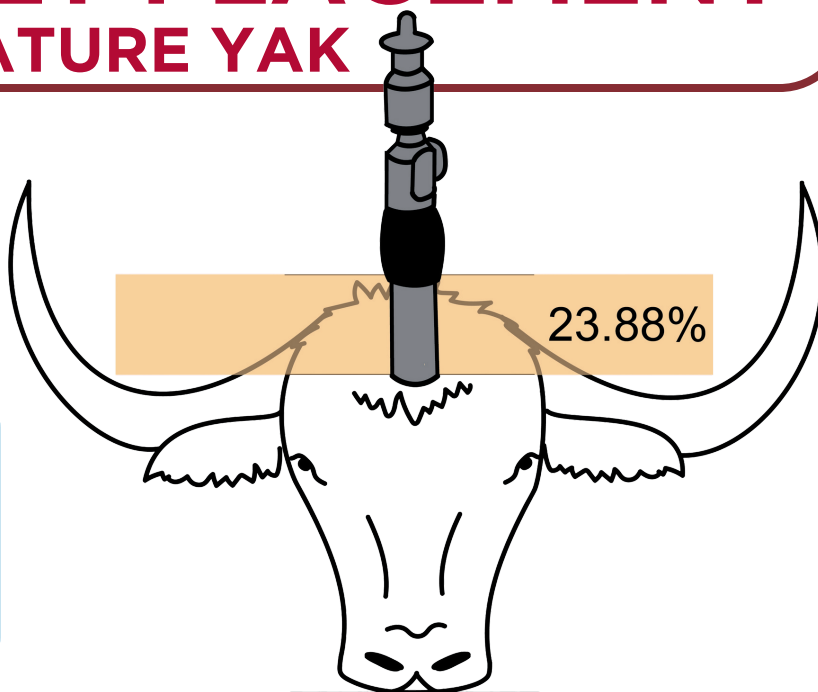


CAPTIVE BOLT PLACEMENT FOR MATURE YAK

- Yak are not included in any stunning or euthanasia guidelines
- No published peer-reviewed literature at the time of this study

Recommended Placement:

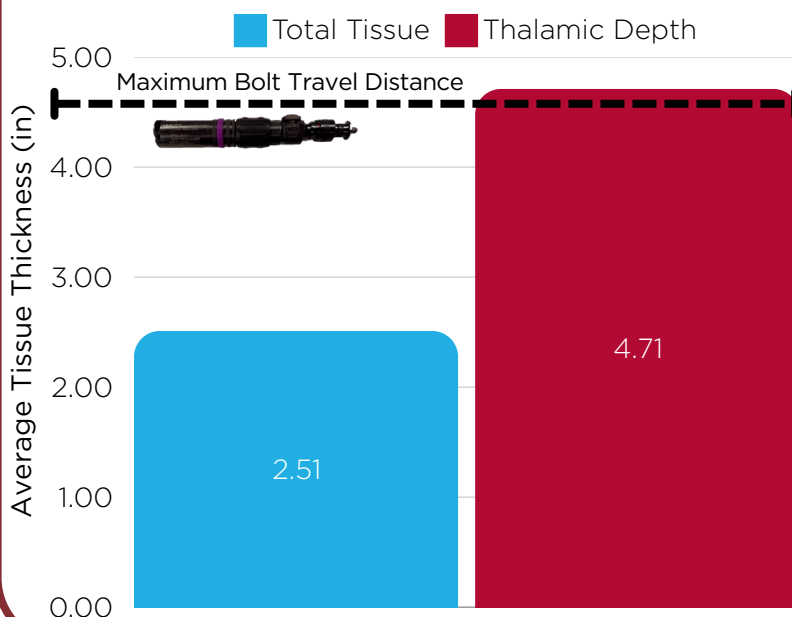
**Approx. 25% of the
proportion of the total head
length (poll to nose distance)**



The thalamus is essential for consciousness, making it an important target for stunning.

Expected Thickness for Majority of Yaks

*These values were calculated to estimate tissue thickness for 97.5% of yaks



Important Findings:

- 1** The ideal placement is approximately 25% down the total head length from the poll and located directly above the center of the thalamus.
- 2** A bolt travel distance of 4.75in is required to reach the thalamus of the majority of yaks, greater than any commercial PCB device.
- 3** The recommended placement for yaks differs from the placements in cattle, water buffalo, bison, and other ruminants.