



CREDIT FOR PRIOR LEARNING

Credit for Prior Learning (CPL) is academic credit that is awarded to students who can successfully demonstrate college or university-level learning achieved through informal or experiential learning outside of the classroom. You could have your learning evaluated for academic credit, saving you time and money towards earning your degree.



INVER HILLS
RANKED #15
NATIONALLY
FOR ADULT
LEARNERS BY
WASHINGTON
MONTHLY IN
2019.

INVER HILLS COMMUNITY COLLEGE

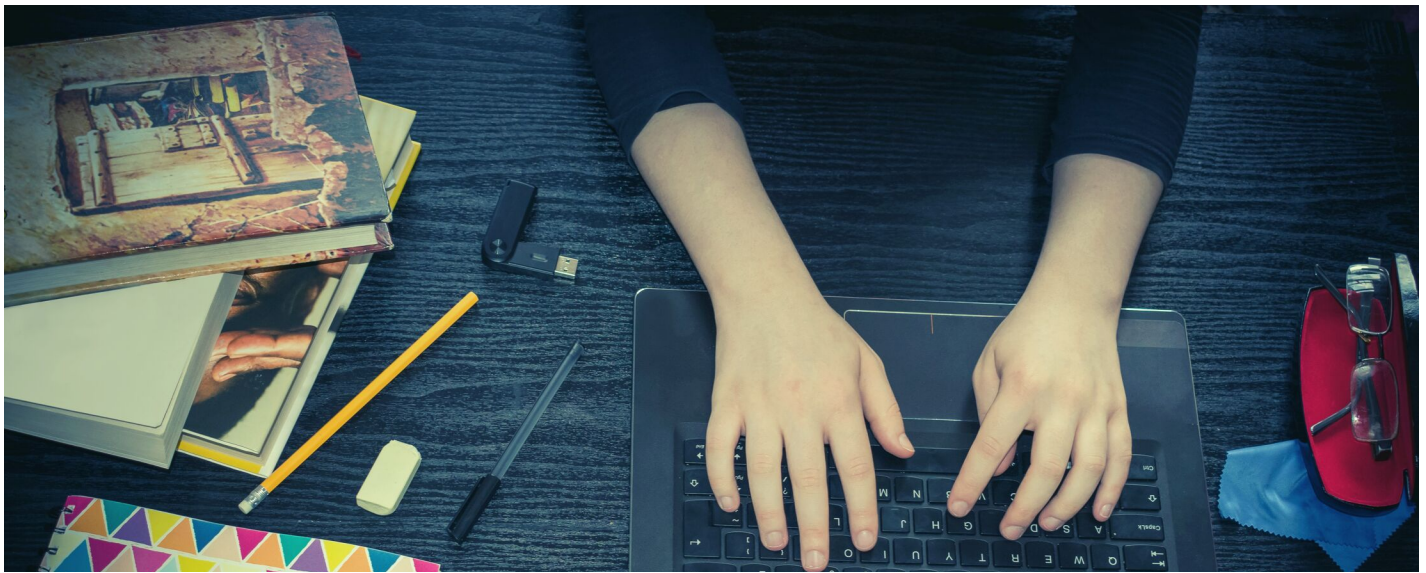
What are the options for credit for prior learning (CPL)?

- Workplace training
- Military training and service
- Professional certifications crosswalks
- Examinations (national exams such as AP, IB, CLEP, DSST, NOCTI)
- Portfolio of learning

ASAP: Adult Success through Accelerated Pathways

ASAP is a program to assist non-traditional learners with degree completion. Students take a planning class to help create an academic plan based around their transfer credits, military credits, and other prior learning opportunities. Our assessments are formally created by faculty or the department and are available in our online learning platform, D2L Brightspace. The cost of assessment is \$100 per credit. IHCC has been offering PLA opportunities for over 20 years.

Find out more contact:
Kendrah Pearson
Director of Prior Learning Assessment
kpearson@inverhills.edu
651-450-3719



WE ARE YOUR EDUCATION PARTNER

RANKED #6 IN
THE NATION
ON THE
MILITARY
TIMES BEST:
CAREER &
TECHNICAL
COLLEGES
LIST FOR
2018-2019.

DAKOTA COUNTY TECHNICAL COLLEGE

What are the options for credit for prior learning (CPL)?

- Workplace training
- Military training and service
- Professional certifications crosswalks
- Examinations (national exams such as AP, IB, CLEP, DSST, NOCTI)
- Portfolio of learning

FASTTRACK: Completion College Degrees

FASTTRACK options provide flexibility for an adult learner's various needs. Programs include Individualized Studies, Technical Management, Business Management, and Business Administration. FASTTRACK programs use an accelerated schedule, credit for prior learning and a personalized academic plan to decrease time to graduation. Students take a planning course to explore what options are the best fit for them. Assessment is \$50 per lecture credit and \$100 per laboratory credit.

For more information:
Kendrah Pearson
Director of Prior Learning Assessment
kendrah.pearson@dctc.edu
651-423-8602