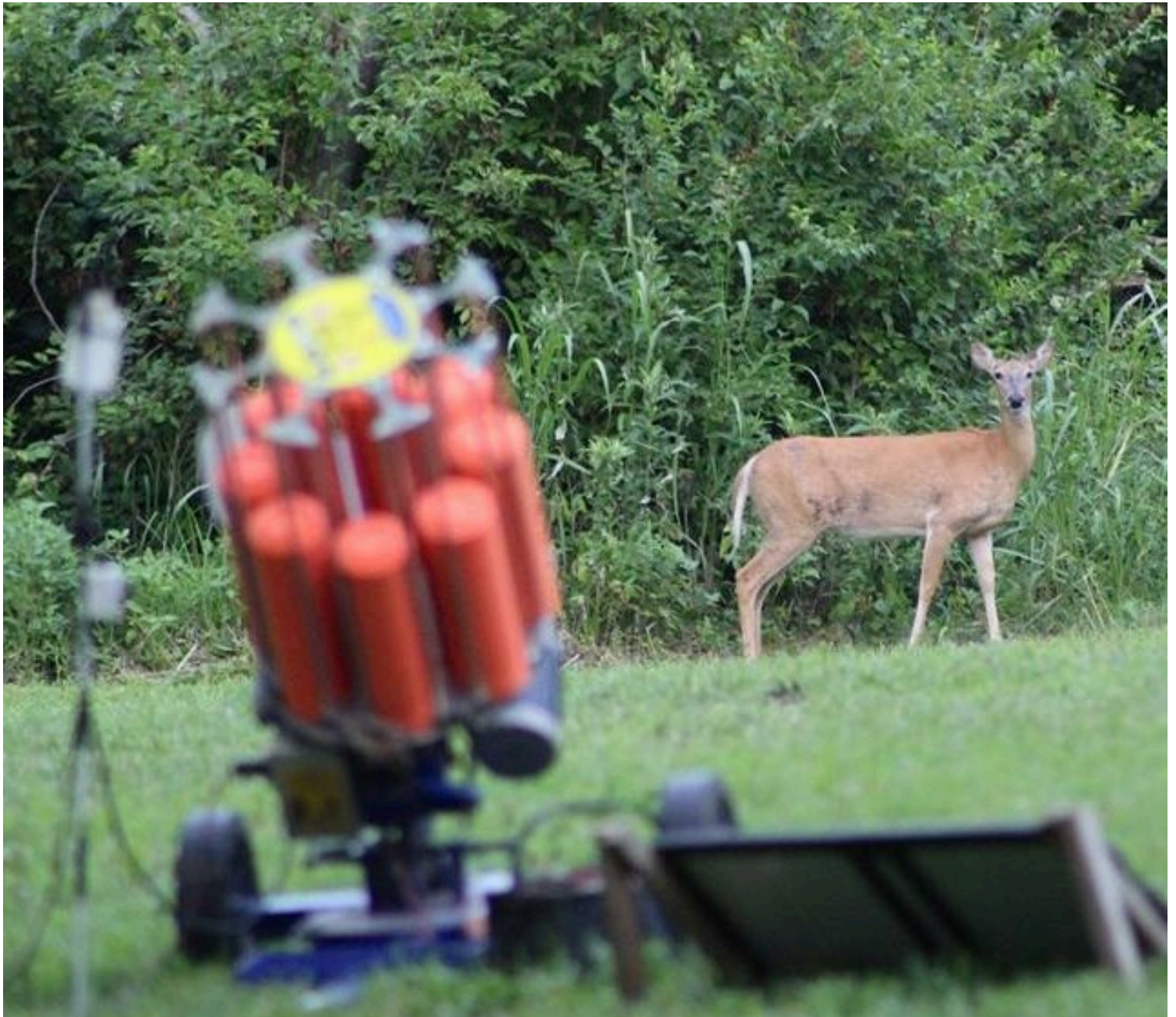


PowderCreek
shooting park

2026 EVENT PACKET



8601 Monticello Rd, Lenexa, KS 66227
powdercreek.com
(913) 422-5063



TABLE OF CONTENTS

- Powder Creek Welcome and Contacts -----pg. 3
- Hours of Operation ----- pg. 4
- Games and Fees --- -----pg. 5
- Headcount / Course Closure Policy-----pg. 6
- Change in Scheduling Policy----- pg. 7
- Pre-Arrival Checklist -----pg. 8
- What PC Provides for Events -----pg. 9
- What PC Does NOT Provide for Events-----pg. 10
- Inclement Weather Policy-----pg. 11
- Course Map-----pg. 12
- Rules, Regulations, and Waiver-----pg.13-14
- Outro Page (ft. Office Dog Jet)-----pg.15





The Powder Creek Team and Board of Directors thank you for choosing our facility for your 2026 event!

This packet is your guide for your event here at Powder Creek Shooting Park. There are suggestions for items you may want to bring for your shooters, our rules and regulations, and a copy of our safety waiver form. **The Powder Creek safety waiver is required for every individual who will be on property.**

If you have questions, don't hesitate to contact us anytime via phone or email. We are excited to have your group join us for a one-of-a-kind experience.

Thank you, and see you soon!

Jason Spengel

General Manger

✉ Jason@powdercreek.com

☎ (913) 609-7843

Austin (Billy) Williams

Assistant Manger

✉ AustinW@powdercreek.com

☎ (913) 207-9799

Jessie Steffee

Lady of the Leagues

✉ Jessie@powdercreek.com

Kat Wilson-Hamilton

Event Coordinator

✉ kat@powdercreek.com

WELCOME





HOURS OF OPERATION

SUMMER HOURS:

Begin March 11th, 2026

- Monday: Closed
- Tuesday: Closed
- Wednesday: 9 am- 9 pm
- Thursday: 9 am- 9 pm
- Friday: 9 am- 5 pm
- Saturday: 9 am- 5 pm
- Sunday: 10 am- 5 pm

WINTER HOURS:

Begin November 4th, 2026

- Monday: Closed
- Tuesday: Closed
- Wednesday: 10 am-5 pm
- Thursday: 10 am- 5 pm
- Friday: 10 am- 5 pm
- Saturday: 10 am- 5 pm
- Sunday: 10 am- 5 pm

Off Hours Access is Available for Set-Up & Tear-Down if Necessary. Please Let Our Team Know ASAP if You Plan to be Here Outside Regular Hours.

Fees Will Accrue if Running Early / Late and in Clubhouse.

Before and After Hours Fees are not prorated.

Powder Creek will NOT open on a Monday or Tuesday.

No Shooting May Occur outside of Business Hours

BEFORE HOURS FEES = \$150 PER HOUR

AFTER HOURS FEES = \$300 PER HOUR

Hours Change With Daylight Savings Time

Registers Close 30 Minutes Before Clubhouse



GAMES & FEES

FACILITY FEE

\$5 per Attendee

SPORTING CLAYS

72 Clays = \$42 per Shooter
100 Clays = \$48 per Shooter

Trap & Skeet

1 Round (25 Targets) = \$10

5-STAND

1 Round (25 Targets) =
\$11.50

GOLF CARTS

Powder Creek

4/Passenger = \$85.00

6/Passenger = \$110.00

3rd Party **

4/Passenger = \$100

6/Passenger = \$200

** Please Notify Powder Creek Staff IMMEDIATELY if you need more than 20 carts for your event.

We will secure any additional golf carts through a 3rd party vendor, and apply a 10% fee to the pricing listed above. 3rd Party Pricing is Subject to Change.

3rd Party Carts will have a delivery fee of \$150 for reservations of fewer than 8 carts.



*POWDER CREEK'S BOARD OF DIRECTORS RESERVES THE RIGHT TO CHANGE PRICING (UP OR DOWN) AT ANY TIME. ALL PRICE CHANGES THAT OCCUR WILL BE LIVE, AND HONORED IMMEDIATELY. POWDER CREEK WILL NOT LOCK IN RATES.



TARGETS & HEADCOUNT

72 CLAYS PER SHOOTER

- 12 Station Blue Course ONLY.
- At least 30 shooters are required to shut down the course.
- Up to 24 Teams Allowed (1-12A & 1-12B)
- **Recommended 5-Person Teams.**

COURSE CLOSURE POLICY

- **Minimum of 30 Shooters Required to Reserve a Course / Calendar Date.**
- If 30 Shooters are not present, the course will not be shut down. We will set you up as a standard walk-in group.
- Powder Creek Needs a Finalized Headcount ONE WEEK before event. If accepting walk-ins / open registration, you need a HEADCOUNT CAP so we can properly plan and advertise.
- **Powder Creek will not make day-of adjustments to course,**

100 CLAYS PER SHOOTER

Number of stations will be assigned based on the headcounts below:

- **30-60 People:** Limited to the 12 Station Blue Course. **5 Person Teams = Max of 12 Teams.**
4 Person Teams = Max of 15 Teams.
Approximately 0-3 "B Squads" on Stations 4, 8, and 12.
- **61-85 People:** Limited to a 15 Station Course. **5 Person Teams = Max of 17 Teams.** **4 Person Teams = Max of 22 Teams.** Approximately 2-7 "B Squads" on Odd Numbered Stations.
- **86-120 People:** Limited to a 20 Station Course. **5 Person Teams = Max of 24 Teams.**
4 Person Teams = Max of 30 Teams.
Approximately 4-10 B Squads.
- **121-200 People:** Limited to a 25 Station Course. **5 Person Teams = Max of 40 Teams.**
4 Person Teams = Max of 50 Teams.
Approximately 15-25 B Squads.
- **Recommended 5-Person Teams**



2026 CHANGE IN SCHEDULING POLICIES

To accommodate as many groups as possible, our events calendar opens for booking in phases based on your headcount from the previous year. As larger gatherings require more logistical planning, their booking windows open earlier.

- To help secure a date for every group in our community, booking priority is based on the previous year's attendance.

- **100+ Guests:** Schedule up to 2 years in advance
- **61-99 Guests:** Up to 1 year in advance (rolling 12-month calendar)
- **30-60 People:** Can schedule next year's event starting January 1st of that year.
- **<29 People:** Recommend reaching out and we'll decide on a date that works best for all parties.





PRE-ARRIVAL CHECKLIST



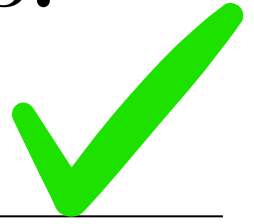
- **BRING YOUR OWN SHOTGUN- We do NOT Rent or Sell Shotguns**
 - *** “Sporting” or “Hunting” Style Shotguns ONLY
 - *** **NO Home Defense, AR Platforms, Pistol Grips without a stock, or Magazines**
 - *** Must Have a 24 Inch Barrel or Longer
- **ARRIVE WITH AN UNLOADED SHOTGUN- Please Unload All Shotguns Before Traveling**
 - *** Action MUST STAY OPEN When Not Actively Shooting
 - *** Shotgun MUST BE UNLOADED When Not Actively Shooting
 - *** These Regulations Will Be Enforced Anywhere on the Property
- **TARGET LEAD LOAD AMMO ONLY- Target / Lead Loads ONLY**
 - *** **Size 7.5, 8, or 9 Shot Only**
 - *** 2 3/4 Inch Long Shells Only
 - *** 1 1/8 oz is the MAX shot weight
 - *** **Powder Creek has 12 & 20, Gauge Shells Available for Purchase**



- **EYE AND EAR PROTECTION- Eye and Ear Protection MUST BE WORN AT ALL TIMES While on the Property**
 - *** Sunglasses / Prescription Glasses are ACCEPTABLE
 - *** Foamy Earplugs are ACCEPTABLE
 - *** **Powder Creek has Eye and Ear Protection available for purchase**
- **SIGNED SAFETY WAIVER IS REQUIRED WHILE ON PROPERTY-**
 - *** Powder Creek Requires Safety Waiver on File **For All Attendees**
 - *** All Must Attend the Safety Speech to Participate in Event

POWDER CREEK PROVIDES:

Here is what your facility fee covers, and the services Powder Creek will provide for you!



01 Clubhouse

- Full Use of Clubhouse and Patio
- Tables and Chairs (Seating for 72 Inside, 32 on Pavilion, Plus a Gazebo)
- Use of Entire Kitchenette - incl. Fridge, warmer, counters, sink.
- Full-Service Restrooms

02

Resources

• AMMO AVAILABLE FOR PURCHASE IN THE CLUBHOUSE

- View Pairs included in target count
- Ice Machine and 10 Standard Sized Coolers (4 Large, 6 Small)
- Personalized Scorecards with your Logo
- Clipboards and Pencils

Services

03

- Safety Briefing by Powder Creek Staff
- Sponsor Signs Set up at Stations by PC Staff (by request only).
- Coolers Set up at Stations by PC Staff (by request only).
- Trash Collection

04

Misc.

- Microphone and PA System for Announcements
- Pattering Board
- Archery Range, BB Gun Range, Catch and Release Fishing Pond
- Certified Shooting Instructor available for events (by request only)



POWDER CREEK DOES NOT PROVIDE:

Here is what our facility does not cover. These items will be your responsibility to secure, or to notify us that you need help securing.



POWDER CREEK DOES NOT RENT OR SELL SHOTGUNS

- 01 Clubhouse**
- Powder Creek Staff Does Not Arrange Tables, Chairs, or Set Up the Clubhouse for your Event / Registration
 - Limited Access to Refrigerator
 - PUBLIC WIFI ONLY- Please review requirements for your company card readers if bringing your own (Square, Shopify, SumUp, etc...)

- 02 Resources**
- Water, Soda, or Any Other Beverages are Not Provided
 - Food, Snacks, or Catered Meals are Not Provided
 - **Eye or Ear Protection is AVAILABLE FOR PURCHASE AT CLUBHOUSE**
 - **Ammo is AVAILABLE FOR PURCHASE AT CLUBHOUSE**

- 03 Services**
- Powder Creek Does Not Load or Unload your Vehicles
 - Powder Creek Does Not Set Out Supplies or Hang Gate / Wall Banners
 - Powder Creek Does Not Provide Sporting Clay Course Shuttles / Rides
 - Powder Creek Does Not Pre-Set Ammo on Course
 - Powder Creek Does Not Keep Score / Pull for Your Event(s)

- 04 Misc.**
- PC Does Not Have Archery Equipment for Rent or Sell
 - PC Does Not Have BB Guns or BB Equipment / Ammo for Rent or Sale
 - PC Does Not Have Fishing Equipment for Rent or Sale





INCLEMENT WEATHER POLICY

LIGHTNING POLICY

Powder Creek allows shooting in the rain. However, if lightening is present within a TEN MILE RADIUS, then all individuals will be asked to vacate the shooting grounds and take shelter indoors.

TORNADO POLICY

If a tornado warning occurs, we suggest that all individuals vacate the property and seek shelter elsewhere due to the fact that **Powder Creek does not have any form of subterranean shelter or basement.** If dire circumstances arise and individuals are still on property, Powder Creek does have an emergency action plan in place.

WINTER WEATHER POLICY

If any of the following conditions arise, Powder Creek Shooting Park may not be open for daily business:

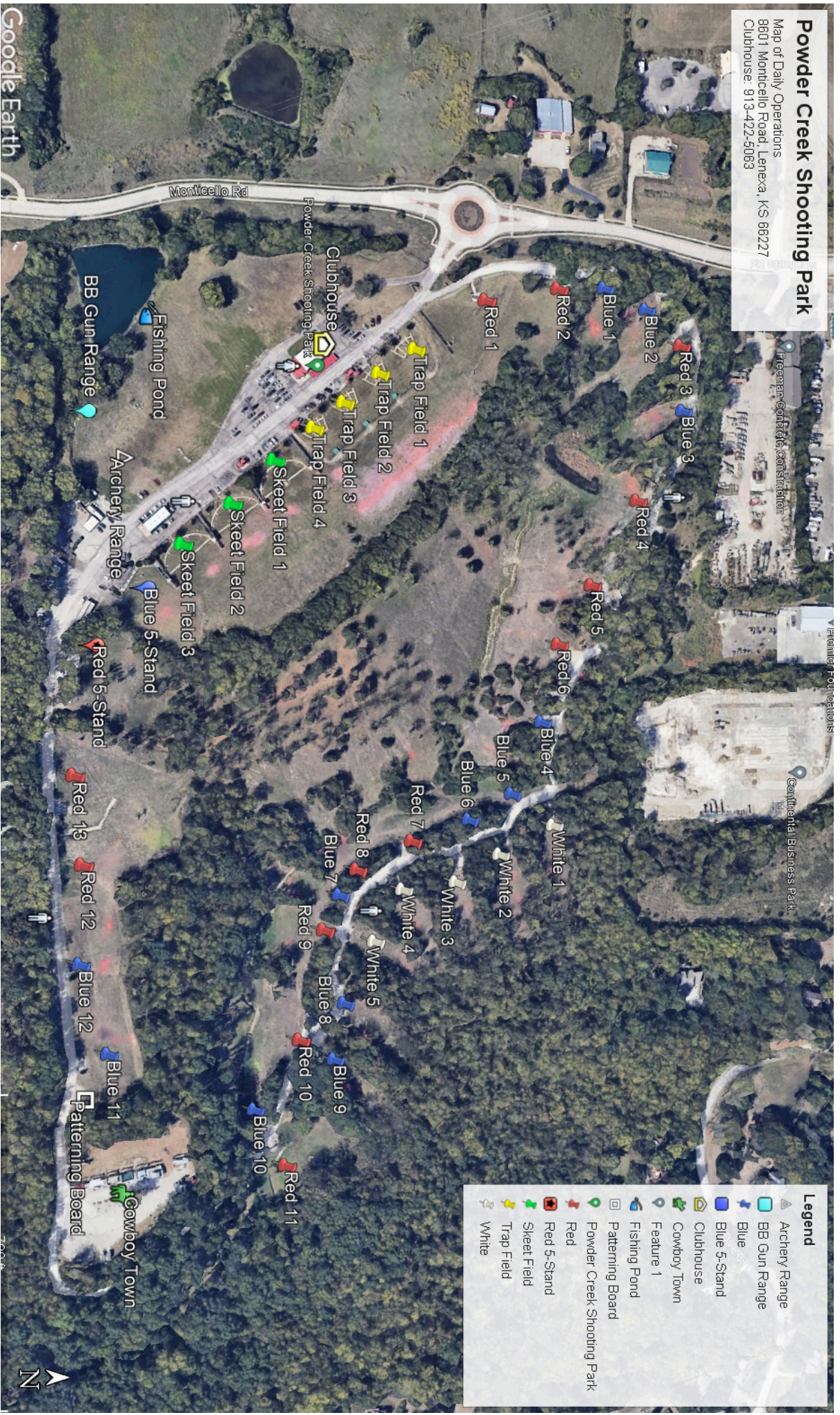
1. If area schools or events have been cancelled
2. If local roads are closed
3. If there is a weather forecast including any of the following:
 - o Winter Weather Advisory / Warning / Alert in Affect
 - o 100% Chance of Winter Precipitation to Occur Overnight or into the Next Day
 - o Extreme Frigid Temperatures / Wind-Chills (Manager's Discretion)

ANNOUNCEMENTS

Winter Weather Closures will be announced on the homepage of www.powdercreek.com, PC's Facebook Page, via Newsletter, and on the main office telephone answering machine when you call **(913) 422-5063.**

Powder Creek Shooting Park

Map of Daily Operations
 8601 Monticello Road, Lenexa, KS 66227
 Clubhouse: 913-422-5063



Legend	
	Archeury Range
	BB Gun Range
	Blue
	Blue 5-Stand
	Clubhouse
	Cowboy Town
	Feature 1
	Fishing Pond
	Patterning Board
	Powder Creek Shooting Park
	Red
	Red 5-Stand
	Skeet Field
	Trap Field
	White

Google Earth



RULES & REGULATIONS

The club is a safe, friendly and respectful place for our members and visitors to gather in the spirit of fellowship, relaxation, and the recreational enjoyment of Shotgun Sports. All members, staff, guests, and visitors are expected to conduct themselves in a manner that treats other people and our property in a respectful and friendly way at all times.

Any violation of the rules will be grounds for removal from the property. We reserve the right to restrict access to the property for any persons not adhering to these rules:

1. ALWAYS treat all guns as if they are loaded
2. ALWAYS keep firearms pointed in a safe direction
3. NEVER point a firearm at any person or animal
4. ALWAYS keep the gun unloaded until ready to use
5. ALWAYS keep your finger off the trigger until ready to shoot
6. ALWAYS know your target and what lies beyond it

Specific Shotguns Not Allowed: AR platform shotguns (shotguns with a detachable magazine), shotguns with a pistol grip and no stock, or shotguns with a barrel length of less than 24 inches ARE NOT allowed.

Loading the Shotgun: Do not load the firearm until it is your turn to shoot. You must be on a designated shooting station for trap and skeet or in the designated stands for 5-stand and sporting clays.

Action open: Always carry your shotgun with the action open until you are in a designated shooting position or stand and ready to shoot.

Eye and ear Protection: All persons, including observers, will wear eye and ear protection when on the course or any field. Individuals assume all responsibility for any injury that occurs by not wearing eye and ear protections and agree to hold Powder Creek harmless.

Number of shells in the Gun: Never load more shells than allowed as listed below. Loading more than allowed ammunition is grounds for removal from premises.

- **Trap:** 1 shell at a time
- **Skeet, 5-Stand, and Sporting Clays:** Never more than 2 shells

Target Loads Only: Only LEAD shot is approved. Ammunition must be 2 3/4in, and 1-1/8 ounces, only 7 1/2, 8, or 9 Shot are allowed. Shooting ammunition outside of these regulations is grounds for removal from premises. If you are unsure about your ammunition meeting these requirements, please ask staff to confirm.

All firearms will be discharged from the shoulder.

RULES & REGULATIONS CONT.

- **Consumption of drugs/alcoholic beverages is NOT allowed before or during shooting. Alcoholic beverages are not allowed on any of the courses or fields. Alcoholic Beverages are restricted to the Clubhouse Only.**
- While waiting for your turn to shoot, be sure you are safely behind the shooter and clear of their field of vision.
- Practice swings from behind a designated shooting position are NOT ALLOWED.
- When exiting a designated shooting station, ensure that the shotgun is unloaded and the action is open.
- Never handle another shooters gun without permission.
- It is forbidden to shoot any animal or wildlife while on Powder Creek property.
- If you are using an ATV, 4-wheeler, side-by-side or golf cart on property, use extreme caution and respect fellow shooters who are walking. Keep to designated areas, & maintain a speed of 10mph or less.
- Dispose of all empty shell cases in the trash containers at each station.
- Individuals are required to report: safety violations, acts of vandalism, injury, or violation of any rules while on the property.
 - If you see someone acting in an unsafe manner; politely mention it to them, referring to the appropriate club rules. If the situation continues or is ignored, report this to club management immediately.
- All pets are to be leashed (except Jethro) and under owner control; except in the off-leash area. (Grassy area near pond)
- Anyone under the age of 18 must be accompanied and under supervision of an adult (18 Y.O. or older).
- Members shall be considerate of others, and will refrain from the use of obnoxious, offensive or abusive language towards others.
- While on Sporting Clays Course or any field, do not point your gun downrange while staff are filling machines or performing maintenance.
 - Only authorized persons are allowed in the trap and skeet houses or near sporting clays machines or mechanical lifts.



YOU'RE ALL SET!



Follow This QR Code to
sign the safety waiver
for 2026!



There is a lot of
information in this
packet, so please reach
out with any questions.
We are always happy to
help!



(913) 422-5063

powdercreek.com

Thank you!