

ARE YOU READY TO LEAVE YOUR MARK ON THE DIGITAL LANDSCAPE?

Hiring top talent is critical in the overall performance of your organization.

ICTC's WIL Digital is an innovative Work Integrated Learning (WIL) program that helps employers grow their businesses by providing financial assistance for hiring post-secondary students.



INTELLIGENT RETAIL



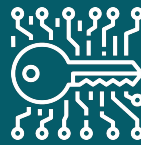
FINANCIAL TECHNOLOGY



ADVANCED MANUFACTURING



ARTIFICIAL INTELLIGENCE



CYBERSECURITY



ENTERTAINMENT & GAMING



WHAT IS THE WIL DIGITAL SUBSIDY?



WIL Digital supports Canadian businesses that offer student work placements in IT and tech sectors, including but not limited to: Cybersecurity, Artificial intelligence, Fintech, Intelligent retail, Advanced manufacturing, Entertainment and gaming, E-health, Connected transportation and Green technology

HOW DO I APPLY FOR THE SUBSIDY?

Do you already have a student in mind? Are you thinking of hiring? Here's what to do...



ELIGIBILITY

Check the eligibility of your company and the position. Our Eligibility Checklist is a tool to do this quickly.

START THE APPLICATION

Create a company profile once you identify a student you would like to hire. Be sure to check the student's eligibility through the eligibility checklist.

STUDENT APPLICATION FORM

Complete the placement information and student contact form. Students will automatically be invited to fill out and submit the Student Information Form and submit supporting documents.

APPLICATION SUBMISSION

Coordinate with the student to ensure the application is complete and click submit. Add additional placements for each eligible student you are hiring.

START YOUR APPLICATION



WHO QUALIFIES FOR A WAGE SUBSIDY?

Your company's eligibility for a wage subsidy is based on five required criteria.

1

REGISTERED BUSINESS IN CANADA

Business Registration Number and company information will be required in the application.

2

QUALITY POSITION

The position should advance the skills of students and prepare them for employment in an ICT/Digital role.

MUST HAVE INSURANCE

General liability insurance will be necessary to cover claims for bodily injury or property damage that could occur during the placement period.

3

MUST COMPLY WITH LEGISLATION

All applicable federal and provincial human rights and labour legislation, regulations, and any other relevant standards including the Occupational Health and Safety Act and the Employment Standards Act.

4

MUST CREATE A NET NEW POSITION

Net New is determined by subtracting the number of students hired in a fiscal year prior to first participating in the WIL Digital Program and the number of students the company is intending to hire in the current fiscal year, including those already hired.

5

HOW DO I BECOME A WIL DIGITAL PROGRAM EMPLOYER?

1

SUBMIT YOUR APPLICATION

Whether you are planning to hire one or more students, you will need to apply for a subsidy.

2

RESULTS NOTIFICATION

Results are sent to applicants within two weeks after submitting complete applications including all supporting documents.

3

SIGN CONTRACT WITH ICTC

Successful companies will be invited to sign a contract with ICTC. Contract will include details of subsidy payment and learning plan.

LEARNING PLAN

Within the first two weeks of the placement, the supervisor and student will be asked to develop and submit a learning plan to ICTC.

4

MID-TERM CHECK-IN

About two months into the placement, students and employers will be asked to complete a short form to give feedback about the placement up to that point.

5

FINAL EVALUATION & PAYROLL INFORMATION

Within the last two weeks of the placement, the supervisor will be asked to complete and submit a final evaluation and students will be asked to complete a post-placement survey. You will also be asked to provide proof of payroll.

6

COMPANIES RECEIVE SUBSIDY

Companies who meet all contractual obligations will receive a one time payment at the end of each approved placement. Companies will receive this subsidy within 4 weeks after submitting proof of payroll along with other supporting documents.

7

Visit [E-talent Canada](https://www.e-talent.ca) and apply online.

Visit www.ictc-ctic.ca to learn more about us



Canada
Funded by the Government of Canada Student
Work Placement Program