

# Wayfinding Instructions

TREASURE ISLAND CENTER / TRIA SKATE RINK - 400 WABASHA STREET N - ST. PAUL, MN

This guide was developed based on the teaching and consultation of Nicole Smith and Barak adé Soleil

## Arrival & Accessible Entry

### From the Street

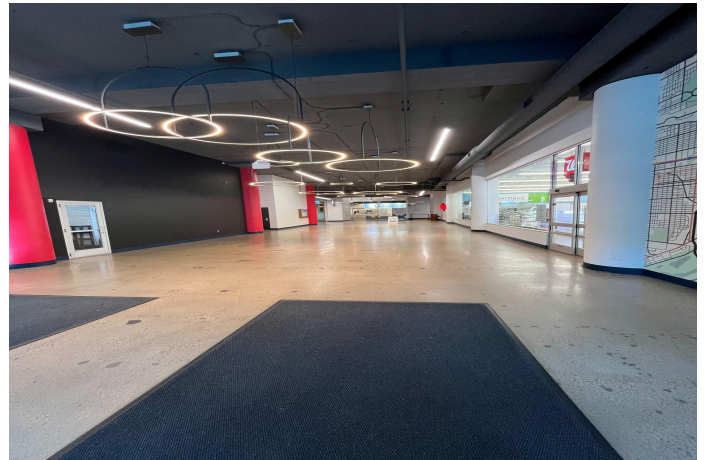
The main street-level entrance to the building is on Wabasha Street North (one-way westbound). There's a curb drop-off zone here — convenient for people using mobility devices or arriving by vehicle.

- Look for automatic doors (Treasure Island Center entrance), which provide level access inside the building
- This takes you into Level 2 of the building



# Wayfinding Instructions

TREASURE ISLAND CENTER / TRIA SKATE RINK - 400 WABASHA STREET N - ST. PAUL, MN



## If Driving & Parking in the Treasure Island Center Ramp

A parking ramp is integrated into Treasure Island Center:

- Ramp entrances:
  - Wabasha Street side (Entrance C) and
  - 6th Street side (Entrance B)
- Top level (Level 7) provides direct access doors near the rink entry and drop-off area.
- Parking meters accept credit cards; ramp operates without attendants.

✓ Tip: For accessible parking or the most direct route to interior accessible entrances, use the Wabasha Street entrance and curb drop-off area.

## Entering the Building (Accessible Path)

1. Enter through the Wabasha Street doors into the main lobby of Treasure Island Center. Automatic door openers with push-button activation are available at this entrance.
  2. Inside, you'll find directories and wayfinding signs indicating building levels and public elevator locations.
- If you arrived via skyway (connected to downtown St. Paul's skyway system):
- Enter Treasure Island Center at the skyway entrance on Level 3
  - Take the public elevators to Level 5 (rink location)
-

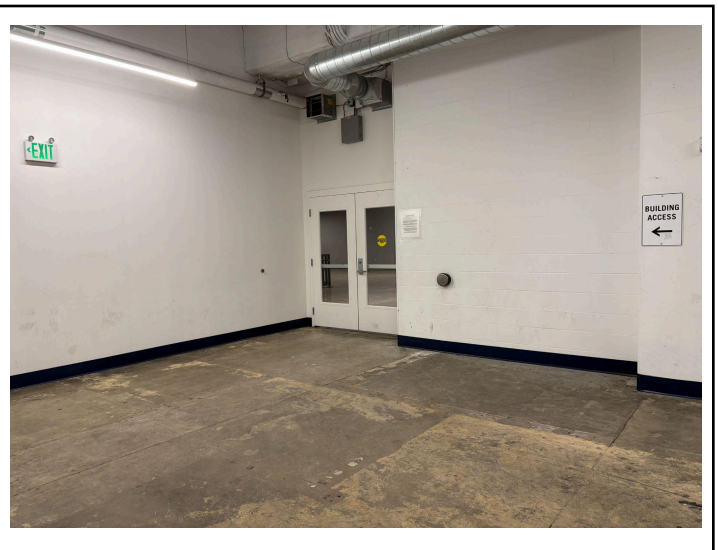
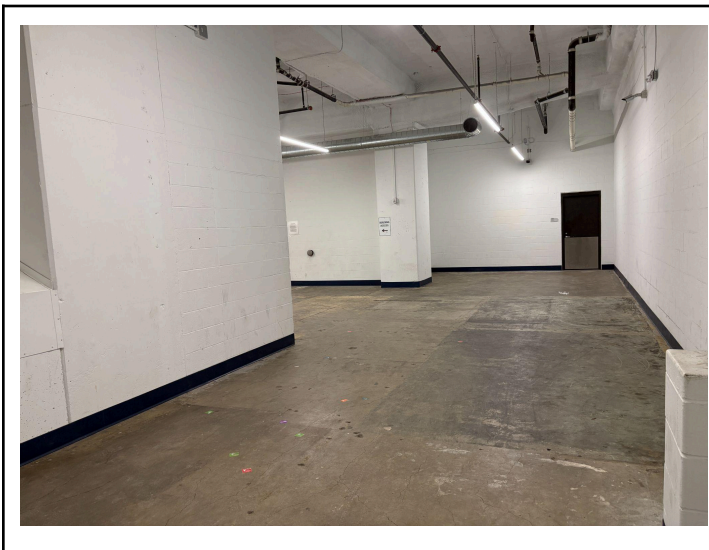
# Wayfinding Instructions

TREASURE ISLAND CENTER / TRIA SKATE RINK - 400 WABASHA STREET N - ST. PAUL, MN

## Elevator & Getting to the Rink

### From Lobby

- Head toward the public elevators — these serve all main floors, including the rink level.
  - Elevator access is marked with signage for Levels 4–7.
  - Inside the elevator, press the button for Level 5 (Tria Rink level).



## From Parking Ramp

If you parked on Level 7:

1. Use the interior building entrance on Level 7.
2. From the entrance, there are stairs (a few steps down) or a platform lift.
3. You will now be at (rink level).

# Wayfinding Instructions

TREASURE ISLAND CENTER / TRIA SKATE RINK - 400 WABASHA STREET N - ST. PAUL, MN



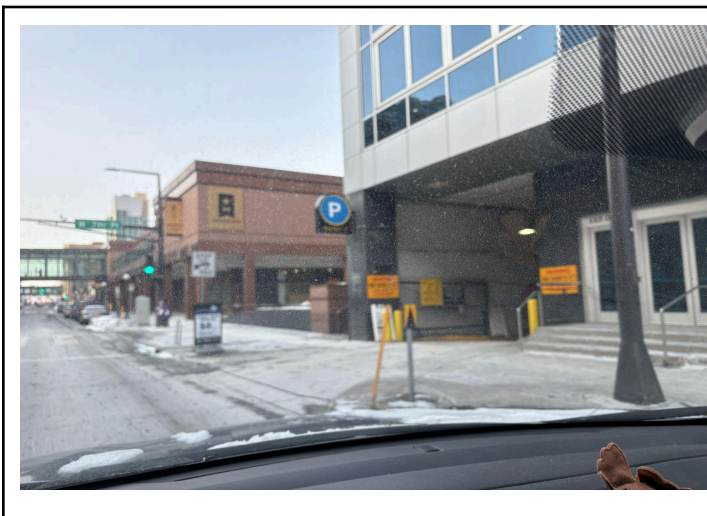
## Accessibility Features & Notes

- Elevators provide access to the rink from street level and skyway entrances.
- Doorways and lobby spaces meet accessible design standards. Curb cuts are located near the street-level drop-off area. Note: During winter months, snow coverage may temporarily obstruct curb cuts.
- Skyway connections provide an indoor route from nearby downtown St. Paul buildings. Skyway hours may be limited; some sections may be closed on Sundays.



## Quick Step-by-Step

1. Arrive at 400 Wabasha St North (westbound street).
2. Use the curb drop-off area or park in the parking ramp (top level provides direct building access).
3. Enter Treasure Island Center through the automatic doors.
4. Locate the platform lift.
5. Take the lift down to the rink level.



# TRIA Rink — Sensory-Friendly Know Before You Go

## What the Event Environment Is Like

*Main building outside, curbs cuts, sidewalk may be covered in snow.* In the rink, you will be **sitting on the ice on top of a carpeted surface** to watch the performance.

The flooring is smooth. Between the elevators / ice arena entrance and the ice rink you will experience smooth rubber flooring. To step onto the ice, there is a small textured non-slip ramp. Once you get onto the ice, you will walk on a foam carpet covering the ice. You will be seated in plastic chairs

---

## SIGHT — What You May See

- Bright overhead arena lights
- White ice that reflects light
- Fast-moving skating artists on the ice
- Event staff, ushers, or security

**If bright or busy visuals feel overwhelming, you can:**

- Wear sunglasses or a hat
  - Sit towards the back of the audience seating area
  - Look down at a phone, book, or comfort item
  - Take a visual break in the lobby
- 

## SOUND — What You May Hear

- Loud clapping
- Music or sound effects
- Announcer voices
- Echoing from large open space

# TRIA Rink — Sensory-Friendly Know Before You Go

## If noise feels overwhelming, you can:

- Wear noise-canceling headphones or ear defenders
  - Cover ears
  - Take elevator to level 3 or 2, if feeling overwhelmed
- 

## SMELL — What You May Notice

- The smell of sweet snacks, coffee, or hot chocolate
- Cold ice or rink-cleaning scent
- Equipment or locker room smells

## If smells feel strong, you can:

- Wear a mask
  - Bring gum, mints, or a comforting scent
  - Sit farther from the snack table
- 

## TEMPERATURE — How Cold It Feels

- The rink area is **cold; the ice is cold**
- Seating on the ice feels colder than the lobby
- Air may feel cool and dry

## Helpful clothing:

- Jacket or coat
- Gloves
- Hat or hoodie
- Wear boots, sneakers, or something with a cushioned rubber sole, socks