

INTRODUCING...



+



Champions for School Health

4H



KAISER PERMANENTE®

TECHNICAL TIPS

1. To view the **chat box**, press the “Chat” icon that looks like a word bubble at the bottom of your screen on the black bar.
2. To **listen to the audio**, make sure your computer or headphone speakers are turned ON and the volume is adjusted to your preference.
3. To participate in the conversation, feel free to type your questions or comments in the **chat** portal.
4. To **exit or change to full screen, speaker, or gallery view**, click the top right button or “View Options” drop down menu.

About IEL

Since 1964, IEL has equipped leaders to work together across boundaries to build effective systems that create better opportunities for children, youth, and families across education and employment.

IEL's Role in Challenge

- Catalyze greater partnerships across communities
- Energize a learning community to share best practices, resources and challenges
- Build systems to support healthy communities beyond COVID
- Inform policies, practices and provisions based on what we learn from each other

About NASN

NASN supports 21st Century school nurses, actively pursuing health, education and social equity through shared leadership so that all students are safe, healthy and ready to learn.

NASN's Role in Challenge

- Help build connections to school nurses
- Provide technical assistance to school nurses who are active on the challenge
- Share lessons learned from implementation grantees
- Developing a toolkit focused on building vaccine confidence using a trusted advisor strategy to be used as a resource.



NASN IMPLEMENTATION GRANTS

- **Phase 1** = \$500,000 across school communities conducted between now and August focused on vaccine access, confidence and uptake
- **Phase 2** = \$500,000 for projects from August – December.



Champions for School Health



KAISER PERMANENTE®

Vaccination Challenge

Kick Off Launch

CHALLENGE EFFORTS



EXCITED TO ANNOUNCE...

Enter to win part of a **\$25K** weekly award!



FIRST 100 to complete registration form
and join the Learning Community receive
\$2k Prize Money



Join a Learning Community to
START, SHARE, SCALE
COVID-19 vaccination efforts for
school-aged children

Increase

COVID-19 vaccine confidence

Increase

vaccine uptake

Increase

vaccine equity

WHO CAN APPLY

Community Schools and/or community partners connected to at least one public school

Within the footprint of Kaiser Permanente regional offices in California, Colorado, Georgia, Hawaii, Maryland, Oregon, Northern Virginia, Washington, and the District of Columbia.

Who are considered public, private, and/or non-profit organizations and;

Are affiliated with a 501(c)(3) status, Government organizations, and/or faith-based organizations

IMPORTANT DATES

Registration:

Begins March 8th and continue open enrollment through May 28th

Challenge Time Period:

12-weeks (March 13 – June 4)

Weekly Challenge Entry Submission:

Report data between Sunday to Saturday; Submit EOD Mondays

Challenge Report Reviews:

Every Tuesday for 12-weeks

Weekly Awardees Announcement:

Every Wednesday for 12-weeks

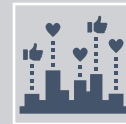
Challenge Award Distributions:

Bi-weekly payment process

WHAT IS ASKED OF PARTNERS?



Participate on bi-weekly virtual calls and ad hoc planning meetings to inform the project



Engage regularly on the learning community platform



Share your efforts, challenges, resources, and results including non-individual identifying data



Share your most compelling stories and partnerships



Use and complete surveys, forms, and communication resources as necessary to inform the challenge weekly winners

THE CHALLENGE IMPACT & OUTCOMES

% of students received at least one dose of COVID-19 vaccine in the past week

of parents/caregivers received at least one dose of COVID-19 vaccine in the past week

% of increase in vaccination rate for the most vulnerable population in the past week

of parents/caregivers engaged in the past week regarding vaccination confidence

Among those parents/caregivers engaged with in the past week, % of them increased their vaccination confidence

WHAT WE NEED FROM YOU: DATA COLLECTION



Challenge Registration
Form



Weekly Data Report
Form

WINNING RULES

Complete the Challenge Registration Form to enter the Challenge

IEL will collect data regarding the five measures weekly

Based on the total scores of the five measures each week, at least 5 winners each week

If you report data weekly, you have chance to win the award every week. The reported information regarding the 5 measures will be assessed weekly

If you do not report data weekly, you only have a chance to win the weekly award during the week when you reported your data.

JOIN THE LEARNING COMMUNITY ON PARTICIPATE PLATFORM

What is Participate?

Participate is our Learning Community platform.

How will we use Participate?

Participants in the vaccination challenge will use the platform to share efforts, challenges, resources, and results including non-individual identifying data.

How do I engage on the platform?

You can reply to discussions, create your own discussions, and like posts & comments by other members.

How do I join?

After you register for the challenge, you will be emailed a link to join the group on Participate.



IEL Institute for
Educational
Leadership
Innovation. Equity. Leadership.

The Institute for Educational Leadership

ONLINE LEARNING COMMUNITY



You're a Member ▾

Institute for Educational Leadership

 Feed

 Courses

 Discussions

 Resources

 Members

 Groups

 About

 Manage Community

 Announcement



Jordan Bynoe
Community Admin

seconds ago

Welcome!

Welcome to Our Learning Community!

Our goal is to have fun while creating a learning community to increase COVID vaccination confidence and uptake.

We're going to use this platform to share efforts, challenges, resources, and results including non-individual identifying data.

This is an opportunity to share your most compelling stories and partnerships!

We look forward to connecting with you!

[See Less](#)



GROUPS

Champions for School Health: Vaccination Challenge

MFPL JB PE

[Dashboard](#)[Feed](#)[Discussions](#)[Resources](#)[Members](#)[Manage](#)

Announcements

**Jordan Bynoe**
Community Admin

26 minutes ago

Welcome!**Welcome to Our
Learning Community!**

Our goal is to have fun while creating a learning community to increase COVID vaccination confidence and uptake.

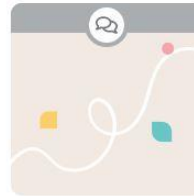
We're going to use this platform to share efforts, challenges, resources, and results including non-individual identifying data.

This is an opportunity to share your most compelling stories and partnerships!

We look forward to connecting with you!

[See Less](#)[View All Announcements](#)

Discussions



DISCUSSION

...

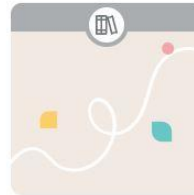
Introductions

Take a minute to introduce yourselves!

0 comments
0 participants
0 resources

[View All Discussions](#)

Resources



WEBPAGE

Vaccine Challenge: Frequently...

COLLECTION

...

Vaccination Challenge Resour...[View All Resources](#)

The Purpose of Participate is to give you C.A.P.E.S.



Connect & collaborate with leaders
vaccinating their communities



Access to exclusive resources,
information, and tools



Participate in protected discussion
posts



Elevate your work across the nation



Save you time



Q&A



**Let's Promote
Healthy Schools
and Healthy
Communities!**