



SPECIFICATIONS

Housing

Extruded aluminum 6063-T5, .093" Thick, seamless design. Contains lens assembly, Led modules and LED drivers. See finish note.

EZ5® Mounting System

One-piece cast aluminum bracket/arm assembly with access plate for wire inspection. Cast aluminum, wall mounting plate with 1/4" thick neoprene gasket. Quick disconnect wiring harness. Escal's EZ5® mounting system allows the contractor to install the fixture in 5 minutes or less. Finished same as housing. See Finish note.

Trunnion Mount

0.125" thick aluminum trunnion with 180° pivot, steel acorn nuts lock fixture in position. Designed for direct mounting to wall or ceiling for surface mount power supply connection to cast aluminum junction box. See Finish note.

Lens

Tempered prismatic or clear glass mounted in aluminum frame. Frame mounted to housing light shield with 6 fasteners. Gasketed between door frame and light shield to prevent light leak and contamination.

LED

(1) Rectangular LED Module. 4225 initial lumens, 32.9 WATT, 4000k and 5000k. RoHS Compliant, UL Recognized.

LED Driver*

(1) 1050mA 58W LED Driver, Class 2, Input voltage 120V-277V 50-60Hz, dimming control 0-10V, over voltage, overload and short circuit, over temp protection, EMI: FCC part 15 CLASS A, protection rated: UL Dry & Damp locations, RoHS Compliant, UL Recognized. Total Watts 38.5. See table.

* **Not all dimming systems are compatible with drivers. Please contact factory prior to placing an order to confirm compatibility.**

Finish

Detergent cleaned with iron phosphate and chromic acid rust inhibitor. Chip resistant powder urethane polyester coating, electrostatic applied and baked. Standard color is sky white, textured bronze or textured black. Custom colors are available. Consult factory or sales representative.

Fixture Warranty

The fixture mechanics are guaranteed to be free from defective material and workmanship, under normal installation and operating conditions, for ten years from date of shipment from the factory.** The LED module is warranted for five years. See General Terms and Conditions.

**Does not cover lens.

Maximum Application Temperature 45° C, 113°F.

Certifications and Labels

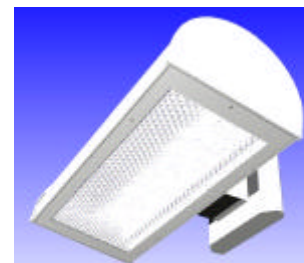
ETL, CETL listed. I.B.E.W. assembled and labeled. ARRA Compliant.

Photometric Information

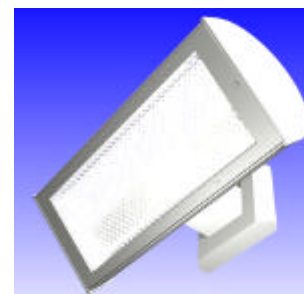
Contact factory.



SPECIFICATIONS SUBJECT TO CHANGE WITHOUT NOTICE.



Wall Mount 10°



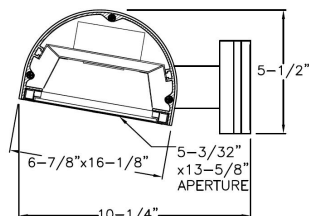
Wall Mount 45°



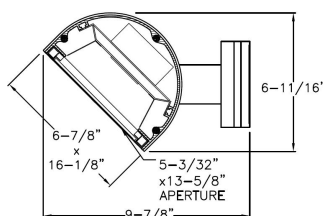
Trunnion Mount
0-180°

DIMENSIONS

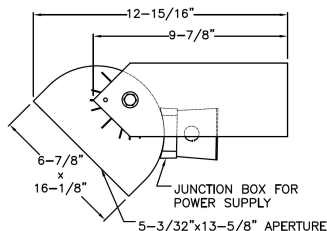
Wall Mount



10°



45°



Trunnion Mount
UP Or Down



WBE City of Chicago Certified

3254 North Kilbourn Avenue Chicago, Illinois 60641-4505
Phone: 773-427-7000 Fax: 773-427-7007 www.escolighting.com
Established 1975





HOW TO ORDER

| Catalog Number | Lens | Total System Watts | Color Temp | Mounting Angle | Lumens |
|----------------|--------------------|--------------------|------------|----------------|--------|
| WPX1410 | PRISMATIC TEMPERED | 36 | 4000K | 10° | 3137 |
| WPX1510 | PRISMATIC TEMPERED | 36 | 5000K | 10° | 3267 |
| WPX1445 | PRISMATIC TEMPERED | 36 | 4000K | 45° | 3137 |
| WPX1545 | PRISMATIC TEMPERED | 36 | 5000K | 45° | 3267 |

| Catalog Number | Lens | Total System Watts | Color Temp | Mounting Angle | Lumens |
|----------------|-------------|--------------------|------------|----------------|--------|
| WPX2410 | CLEAR GLASS | 36 | 4000K | 10° | 3137 |
| WPX2510 | CLEAR GLASS | 36 | 5000K | 10° | 3267 |
| WPX2445 | CLEAR GLASS | 36 | 4000K | 45° | 3137 |
| WPX2545 | CLEAR GLASS | 36 | 5000K | 45° | 3267 |

ACCESSORIES AND OPTIONS



Photo Control* Suffix Catalog number with
120 Volt = **PC4**
208-277 Volt = **PC5**
Example: WPX1410 becomes WPX1410PC4



Fuse and Fuse Holder* Suffix Catalog Number With **F**
Example: WPX1410 becomes WPX1410F

Trunnion Mount Change **W** in Catalog Number to **T**
Example: WPX14 TO TPX14

Trunnion can be adjusted from 0-180°



Occupancy Sensor* Suffix Catalog Number With **OS6**
Example: WPX1410 becomes WPX1410OS6

Finish Color Suffix Catalog Number with"
Textured Black: BL
Textured Bronze: BZ
Sky White: W
Example: WPX1410BZ

*120 or 277 volt must be specified when ordering a Photo Control or Fuse and Fuse Holder.

Voltage Suffix 120v = -1, 277v = -4

EXAMPLE ORDER: WPX1410BZ= Prismatic Tempered, 36W, 3000K, 10° Angle, textured Bronze



WBE City of Chicago Certified

3254 North Kilbourn Avenue Chicago, Illinois 60641-4505
Phone: 773-427-7000 Fax: 773-427-7007 www.escolighting.com
Established 1975

