

**HO
SCALE**

AUTOFLOOD III RAPID DISCHARGE HOPPER



Matt Gentry Photo
Alliance, NE
July 4, 2017

**Order Deadline
TBD
MSRP**

6-Pack **\$359.70/\$449.70** US / CAD

Single Car **\$59.95/\$74.95** US / CAD

Coal. Black Diamonds.

Whatever your name for it, this commodity is best transported across the country by rail. Enter the AutoFlood III rapid discharge hopper car!

Beginning production in 2004, the all aluminum body prototype has been produced in the thousands and has traversed all over North America. With millions of tons of coal per year being mined and hauled out of various locations across the country, you would be hard pressed to not have seen one of these prototype cars in a modern day coal train.

This 4200 cubic foot, exterior post prototype (not to be confused with other prototype exterior post or interior post models) is primarily used as a rapid discharge car which can unload the payload in a matter of seconds via the bottom bay doors. However, the car can also be equipped with a rotary coupler at the end(s) of the car, indicated by the color blocks on the end of the car, for either bottom discharge or rotary unloading based on the infrastructure at the final destination.

The AutoFlood III Coal Hopper features:

- Die-cast frame and floor for optimum car weight
- Full interior rivet and K-member details
- Super-detailed end cages including separate air and brake piping
- Barber S-2 100-ton Trucks with metal wheels
- Hopper bays feature highly-detailed outlet gates
- Etched, see-through end cross-over platforms
- Full end detail, including uncoupling levers
- Separate grab irons installed at the factory
- Accurate paint and lettering
- Removable coal load included
- Multiple road numbers available for each scheme
- Available in singles or multi-packs*
- Multi-packs boxed for individual sale

*Dealers must order multi-packs.



CANADA: 500 ALDEN ROAD • UNIT 21 • MARKHAM • ONTARIO • L3R 5H5
USA: PO BOX 796 • HIGGANUM • CONNECTICUT • 06441
Tel. 905.474.3314. Fax. 905.474.3325. Visit. www.rapidotrains.com

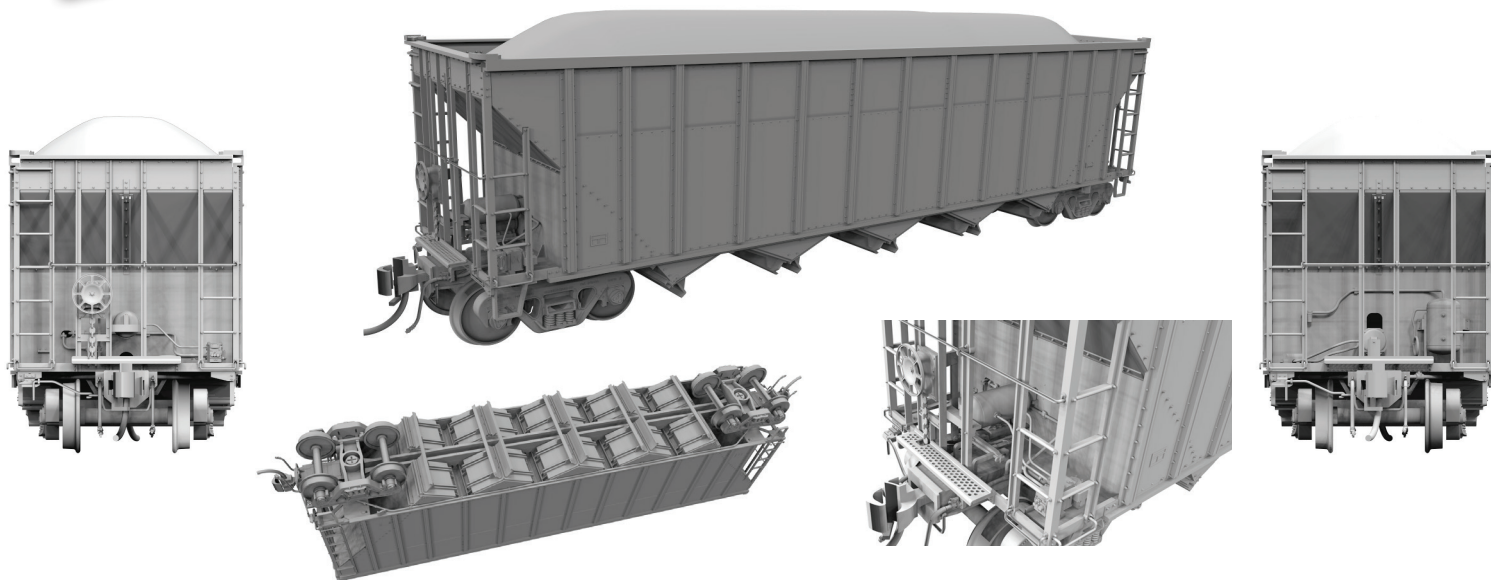
RAPIDO

**HO
SCALE**

AUTOFLOOD III RAPID DISCHARGE HOPPER

By Rapido

DEALER
NAME



BNSF Railway - BNSF



Item #
6-Pack #1 Single Car
169001 169001A

Item #
6-Pack #2 Single Car
169002 169002A

Road #
652830, 652855, 652884, 652900, 652921, 652954
(Single car randomly selected from these numbers)

Road #
652973, 653245, 653287, 653000, 653023, 653036
(Single car randomly selected from these numbers)

Item #
6-Pack #3 Single Car
169003 169003A

Road #
653077, 653109, 653135, 653166, 653212, 653247
(Single car randomly selected from these numbers)

Double Rotary car



Single Car Road #
169004 699623

CIT Group - CEFX



Item #
6-Pack #1 Single Car
169005 169005A

Item #
6-Pack #2 Single Car
169006 169006A

Road #
600428, 600441, 600482, 600498, 600516, 600527
(Single car randomly selected from these numbers)

Road #
600530, 600547, 600555, 600568, 600580, 600593
(Single car randomly selected from these numbers)

Item #
6-Pack #3 Single Car
169007 169007A

Road #
600600, 600612, 600626, 600644, 600568, 600673
(Single car randomly selected from these numbers)

Indiana Railroad 2,000,000th Carload special



Single Car Road #
169008 600480

6-Pack **\$359.70/\$449.70** MSRP
Single Car **\$59.95/\$74.95** US / CAD

Order Deadline
Expected Delivery **TBD**



CANADA: 500 ALDEN ROAD • UNIT 21 • MARKHAM • ONTARIO • L3R 5H5
USA: PO BOX 796 • HIGGANUM • CONNECTICUT • 06441
Tel. 905.474.3314. Fax. 905.474.3325. Visit. www.rapidotrains.com

RAPIDO

**HO
SCALE**

AUTOFLOOD III RAPID DISCHARGE HOPPER

By Rapido

DEALER
NAME

Gulf Power Company - GLFX



Item #
6-Pack #1 Single Car
169009 169009A 169010 169010A

Road #
8001, 8017, 8022, 8035, 8047, 8053
(Single car randomly selected from these numbers)

Road #
8058, 8062, 8070, 8076, 8085, 8092
(Single car randomly selected from these numbers)

Item #
6-Pack #3 Single Car
169011 169011A

Road #
8099, 8103, 8109, 8116, 8121, 8125
(Single car randomly selected from these numbers)

GATX Corporation - GGPX



Item #
6-Pack #1 Single Car
169012 169012A 169013 169013A

Road #
1752, 1734, 1746, 1767, 1779, 1783
(Single car randomly selected from these numbers)

Road #
1795, 1801, 1814, 1820, 1808, 1776
(Single car randomly selected from these numbers)

Item #
6-Pack #3 Single Car
169014 169014A

Road #
1739, 1757, 1788, 1817, 1802, 1811
(Single car randomly selected from these numbers)

Western Resources, Inc. - KPLX



Item #
6-Pack #1 Single Car
169015 169015A 169016 169016A

Road #
6115, 6101, 6123, 6134, 6148, 6152
(Single car randomly selected from these numbers)

Road #
6163, 6177, 6184, 6193, 6202, 6219
(Single car randomly selected from these numbers)

Item #
6-Pack #3 Single Car
169017 169017A

Road #
6222, 6109, 6113, 6128, 6137, 6142
(Single car randomly selected from these numbers)



Carolina Power & Light - PGNX



Item #
6-Pack #1 Single Car
169018 169018A 169019 169019A

Road #
1100, 1111, 1119, 1125, 1132, 1144
(Single car randomly selected from these numbers)

Road #
1153, 1162, 1169, 1174, 1185, 1191
(Single car randomly selected from these numbers)

Item #
6-Pack #3 Single Car
169020 169020A

Road #
1202, 1207, 1211, 1214, 1180, 1196
(Single car randomly selected from these numbers)

Union Pacific - CMO



Item #
6-Pack #1 Single Car
169021 169021A 169022 169022A

Road #
504395, 504250, 504273, 504288, 504294, 504302
(Single car randomly selected from these numbers)

Road #
504318, 504323, 504337, 504341, 504354, 504360
(Single car randomly selected from these numbers)

Item #
6-Pack #3 Single Car
169023 169023A

Road #
504366, 504374, 504386, 504402, 504409, 504259
(Single car randomly selected from these numbers)

6-Pack **\$359.70/\$449.70** MSRP
Single Car **\$59.95/\$74.95** US / CAD

Order Deadline
Expected Delivery **TBD**



CANADA: 500 ALDEN ROAD • UNIT 21 • MARKHAM • ONTARIO • L3R 5H5
USA: PO BOX 796 • HIGGANUM • CONNECTICUT • 06441
Tel. 905.474.3314. Fax. 905.474.3325. Visit. www.rapidotrains.com

RAPIDO