



**HO  
SCALE**

# CTA 2600 Budd Series 'L' Cars

Officially Licensed By



\*NOTE: 3D CAD render is subject to revisions before final production.



**Mo+Power**  
UNINTERRUPTED LOCOMOTIVE POWER

**ESU** LOKSOUND  
EST. 1999

MSRP

No Sound	\$389.95 USD	No Sound	\$489.95 CAD	Display	\$99.95 USD	Straight	\$29.95 USD	Curve Track	\$49.95 USD
w/Sound	\$499.95 USD	w/Sound	\$629.95 CAD		\$124.95 CAD	Track Kit	\$37.95 CAD	Kit (45°)	\$62.95 CAD

- **FIRST TIME AS A READY-TO-RUN PLASTIC MODEL**
- **FULL LIGHTING FEATURES (HEADLIGHTS, MARKERS, DESTINATION LIGHTS)**
- **LONG LASTING SUBWAY CARS – MANY STILL IN SERVICE TODAY**

Introducing the Chicago Transit Authority Budd 2600-series railcars in HO scale! These cars have been in service for over 40 years, and we will feature both "delivery" and post-rehab "present day." The "Spirit of Chicago" delivery scheme cars include era appropriate details like two-crew (operator and conductor) operation. Present day rehabbed cars are configured for operator-only operation, with reconfigured seating and windows.

Each offering comes as a married pair like the prototype. Both cars will have wand controlled lighting for headlights, marker lights, interior lights, and marker/destination lights. That's right! Tell the tower operator which way your model is going by cycling through to the correct light combination for each route. Route decals will be provided for user installation.

## THE CHICAGO 'L' 2600 SERIES CAR FEATURES:

- Designed from original factory drawings and field measurements
- Two-car sets feature one powered and one unpowered 2600-series car
- Power car uses coreless truck motors
- Fully detailed interior includes amazing seat and decoration details
- Operating headlights, marker lights and interior lighting on both ends
- Working "destination" marker lights on both ends
- Lighted front and rear signboards
- Fully detailed underbodies
- Wire grab irons
- DC/DCC ready or Dual-Mode DCC/Sound
- Suggested minimum radius: 15"

## THE CHICAGO 'L' BRIDGE FEATURES:

- The first HO scale transit track!
- Each kit contains: track sections with nickel-silver rail and bridge pieces
- Track and bridge components have keyed sections to join together
- Curve sections feature CTA's unique heavy guardrail on inside curves with bolt detail
- Includes third rail and guardrail as well as center walkways
- Bridge girders feature amazing rivet details
- Inside curve radius: 15"

**CONTACT YOUR RETAILER OR ORDER DIRECT AT [RAPIDOTRAINS.COM](http://RAPIDOTRAINS.COM) / [RAPIDOTRAINS.CA](http://RAPIDOTRAINS.CA)**



CANADA: 500 ALDEN ROAD • UNIT 21 • MARKHAM • ONTARIO • L3R 5H5  
USA: 382 HIGH STREET • BUFFALO • NEW YORK • 14204  
Tel. 905.474.3314. Toll Free 1-855-LRC-6917. Fax. 905.474.3325.

**RAPIDO**



**HO  
SCALE**

# CTA 2600 Budd Series 'L' Cars

Officially Licensed By



MSRP

No Sound <b>\$389.95 USD</b>	No Sound <b>\$489.95 CAD</b>	Display <b>\$99.95 USD</b>	Straight <b>\$29.95 USD</b>	Curve Track <b>\$49.95 USD</b>
w/Sound <b>\$499.95 USD</b>	w/Sound <b>\$629.95 CAD</b>	<b>\$124.95 CAD</b>	Track Kit <b>\$37.95 CAD</b>	Kit (45°) <b>\$62.95 CAD</b>



\*NOTE: 3D CAD render is subject to revisions before final production.

**CONTACT YOUR RETAILER OR ORDER DIRECT AT [RAPIDOTRAINS.COM](http://RAPIDOTRAINS.COM) / [RAPIDOTRAINS.CA](http://RAPIDOTRAINS.CA)**



CANADA: 500 ALDEN ROAD • UNIT 21 • MARKHAM • ONTARIO • L3R 5H5  
USA: 382 HIGH STREET • BUFFALO • NEW YORK • 14204  
Tel. 905.474.3314. Toll Free 1-855-LRC-6917. Fax. 905.474.3325.

**RAPIDO**





**HO  
SCALE**

# CTA 2600 Budd Series 'L' Cars

Officially Licensed By



## CTA - As Delivered Scheme

Road #	Item # (DC/Silent)	Item # (DC/DCC/Sound)
2601+2602	208001 <input type="text"/>	208501 <input type="text"/>
2789+2790	208002 <input type="text"/>	208502 <input type="text"/>
2929+2930	208003 <input type="text"/>	208503 <input type="text"/>
3089+3090	208004 <input type="text"/>	208504 <input type="text"/>



## CTA - Speedlines Logo Scheme

Road #	Item # (DC/Silent)	Item # (DC/DCC/Sound)
2781+2782	208005 <input type="text"/>	208505 <input type="text"/>
2897+2898	208006 <input type="text"/>	208506 <input type="text"/>
2955+2956	208007 <input type="text"/>	208507 <input type="text"/>
3045+3046	208008 <input type="text"/>	208508 <input type="text"/>



## CTA - Circle Logo Scheme

Road #	Item # (DC/Silent)	Item # (DC/DCC/Sound)
2671+2672	208009 <input type="text"/>	208509 <input type="text"/>
2745+2746	208010 <input type="text"/>	208510 <input type="text"/>
2999+3000	208011 <input type="text"/>	208511 <input type="text"/>
3133+3134	208012 <input type="text"/>	208512 <input type="text"/>



## CTA - Work Motor Scheme

Road #	Item # (DC/Silent)	Item # (DC/DCC/Sound)
3139+3140	208013 <input type="text"/>	208513 <input type="text"/>
3179+3180	208014 <input type="text"/>	208514 <input type="text"/>



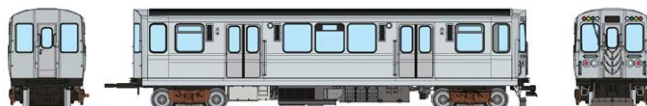
## CTA - Pink Line Promotional Scheme

Road #	Item # (DC/Silent)	Item # (DC/DCC/Sound)
3005+3006	208015 <input type="text"/>	208515 <input type="text"/>
3007+3008	208016 <input type="text"/>	208516 <input type="text"/>



## CTA - 75th Anniversary White/Green Scheme

Road #	Item # (DC/Silent)	Item # (DC/DCC/Sound)
2849+2850	208017 <input type="text"/>	208517 <input type="text"/>
2867+2868	208018 <input type="text"/>	208519 <input type="text"/>



## Painted/Unlettered

Item # (DC/Silent)	Item # (DC/DCC/Sound)
208019 <input type="text"/>	208519 <input type="text"/>

**MSRP**

No Sound <b>\$389.95 USD</b>	No Sound <b>\$489.95 CAD</b>
w/Sound <b>\$499.95 USD</b>	w/Sound <b>\$629.95 CAD</b>
Straight Track <b>\$29.95 USD</b>	Curve Track <b>\$49.95 USD</b>
Kit <b>\$124.95 CAD</b>	Kit (45°) <b>\$62.95 CAD</b>
Display <b>\$99.95 USD / \$124.95 CAD</b>	

**CONTACT YOUR RETAILER OR ORDER DIRECT AT [RAPIDOTRAINS.COM](http://RAPIDOTRAINS.COM) / [RAPIDOTRAINS.CA](http://RAPIDOTRAINS.CA)**



**CANADA: 500 ALDEN ROAD • UNIT 21 • MARKHAM • ONTARIO • L3R 5H5**  
**USA: 382 HIGH STREET • BUFFALO • NEW YORK • 14204**  
**Tel. 905.474.3314. Toll Free 1-855-LRC-6917. Fax. 905.474.3325.**

**RAPIDO**



**HO  
SCALE**

# CTA 2600 Budd Series 'L' Cars

Officially Licensed By



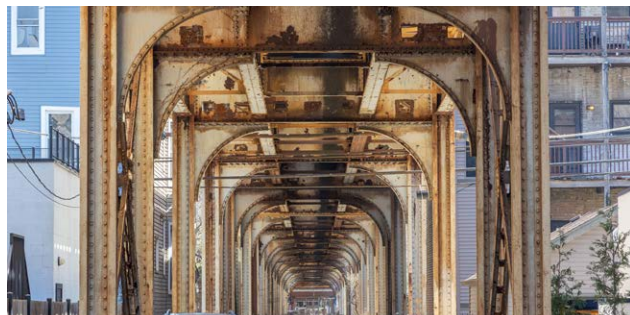
## Display (3 Straights Assembled w/Box)

Item # 301001  Comes With Track Joiners  
**\$99.95 USD**  
**\$124.95 CAD**



## Straight Track Kit (One Bridge Section)

Item # 301002  Comes With Track Joiners  
**\$29.95 USD**  
**\$37.95 CAD**



## Curve Track Kit (One Bridge Section)

Item # 301003  Comes With Track Joiners  
**\$49.95 USD**  
**\$62.95 CAD**

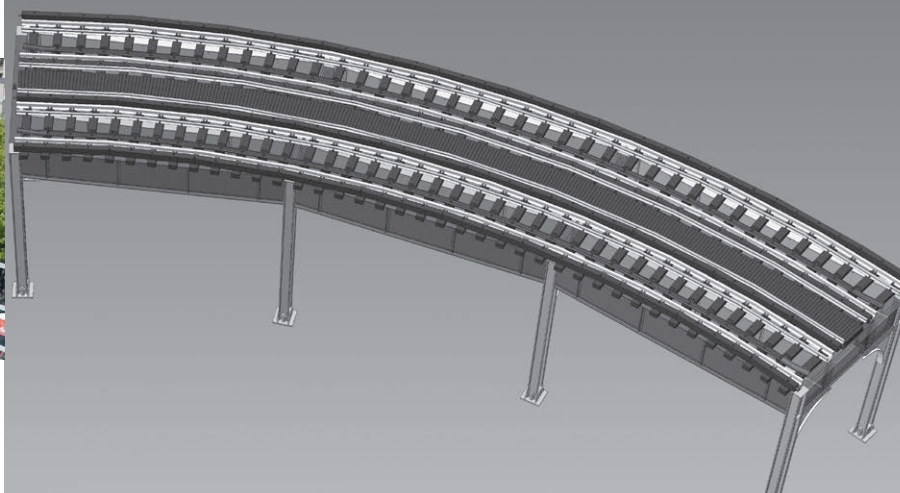
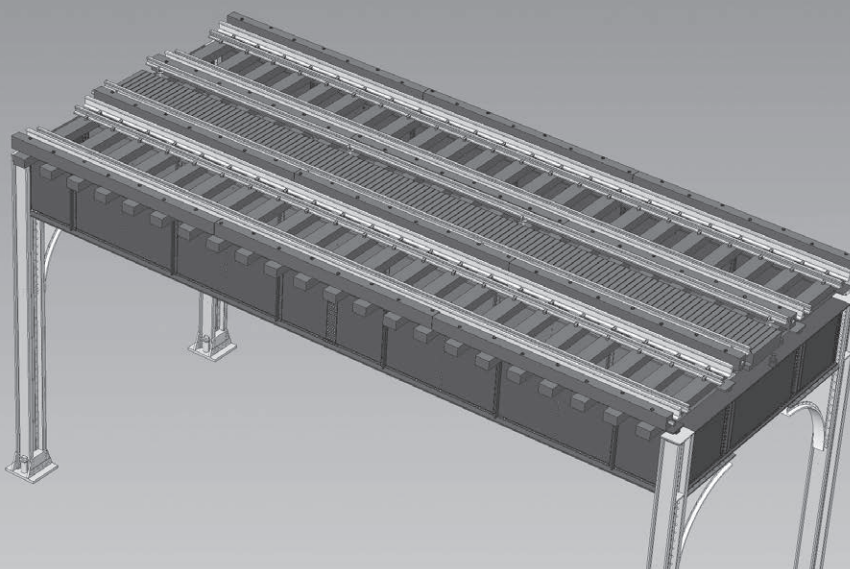
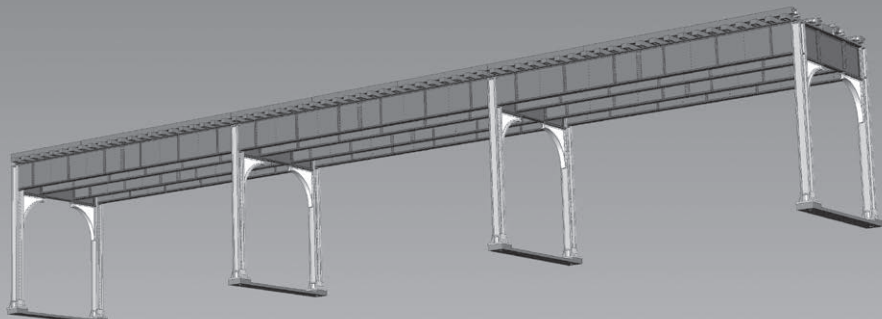


All prototype photos courtesy of Jeff Lassahn.

## Elevated Track Joiners (48 Per Pack)

Item # 301004   
**\$6.95 USD**  
**\$8.95 CAD**

\*NOTE: 3D CAD render is subject to revisions before final production.



**CONTACT YOUR RETAILER OR ORDER DIRECT AT [RAPIDOTRAINS.COM](http://RAPIDOTRAINS.COM) / [RAPIDOTRAINS.CA](http://RAPIDOTRAINS.CA)**



**CANADA: 500 ALDEN ROAD • UNIT 21 • MARKHAM • ONTARIO • L3R 5H5**  
**USA: 382 HIGH STREET • BUFFALO • NEW YORK • 14204**  
**Tel. 905.474.3314. Toll Free 1-855-LRC-6917. Fax. 905.474.3325.**

**RAPIDO**