

**HO  
SCALE**

# CANADIAN PIGGYBACK FLAT CARS



Photo courtesy of Keith Hansen



**Order Deadline**  
**January 16<sup>th</sup>, 2023**

**MSRP**

Single Car **\$54.95** US  
6-Pack **\$329.70** US

Single Car **\$64.95** CAD  
6-Pack **\$389.70** CAD

Both of Canada's two major railways started piggyback (TOFC) services in the 1950's. By the late 60's and early 70's, this traffic had grown substantially and both railroads saw a need to purchase purpose-built flatcars that could handle both 26-foot and longer trailers, up to the then-new standard of 45-foot.

Canadian National placed an order for 283 cars with Vancouver Iron and Engineering Works (V.I.E.W.). Delivery on these cars started in 1966. They would continue in service well into the late 1980's, after a major rebuild in 1976 to a single hitch configuration which resulted in the cars being renumbered into the 688000-688184 series.

Canadian Pacific ordered a large batch of 305 cars from Marine Industries Limited (MIL) in 1972, which were delivered as road numbers 505625-505930. These cars would soldier on in service after several rebuilding programs. As well as the removal of the second hitch, container pedestals were later added to many of the cars. A final group of cars were reconfigured for the Southern Ontario XpressWay service with rub-rails for the circus-style loading and unloading at terminals.

## The Canadian Piggyback Flatcar features:

- Drawn from original blueprints
- Artworks sourced from original lettering diagrams
- Heavy die-cast center sill
- Photo-etched deck surface
- Two styles of hitches; upright and collapsed
- Wire grab irons
- Barber S-2 trucks with metal wheels
- Rapido semi-scale metal knuckle couplers



CANADA: 500 ALDEN ROAD • UNIT 21 • MARKHAM • ONTARIO • L3R 5H5  
USA: PO BOX 796 • HIGGANUM • CONNECTICUT • 06441  
Tel. 905.474.3314. Fax. 905.474.3325. Visit. [www.rapidotrains.com](http://www.rapidotrains.com)

**RAPIDO**

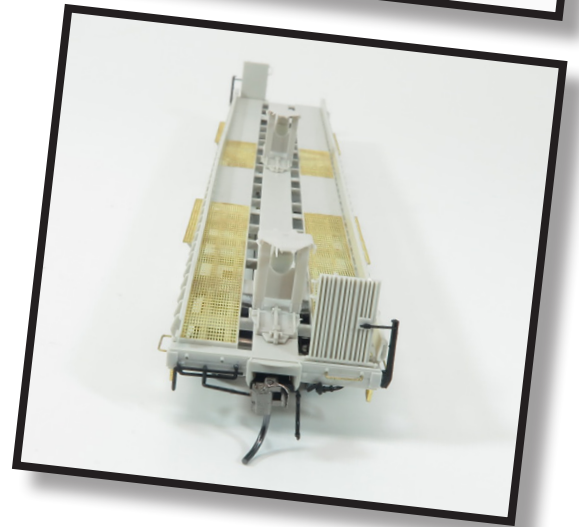
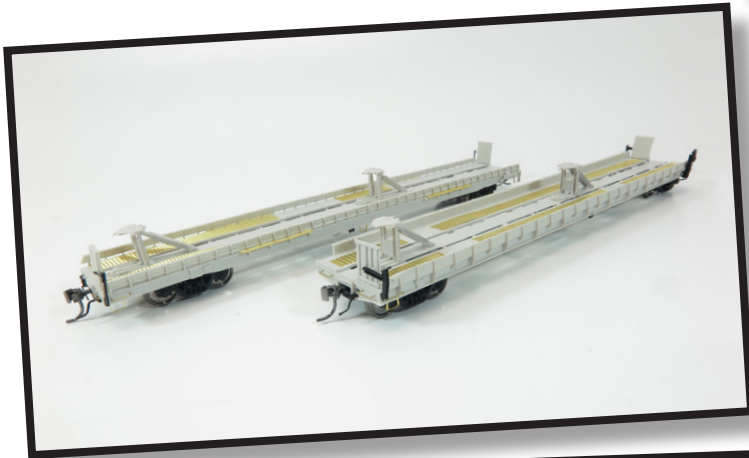
DEALER NAME:

**HO  
SCALE**

# CANADIAN PIGGYBACK FLAT CARS



Early samples shown, all models subject to revision.



Order Deadline  
**January 16<sup>th</sup>, 2023**

**MSRP**  
Single \$54.95 US  
6-Pack \$329.70 US  
Single \$64.95 CAD  
6-Pack \$389.70 CAD



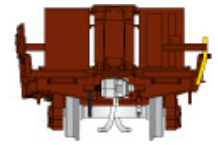
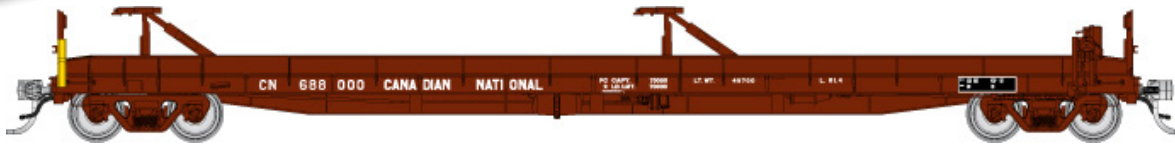
CANADA: 500 ALDEN ROAD • UNIT 21 • MARKHAM • ONTARIO • L3R 5H5  
USA: PO BOX 796 • HIGGANUM • CONNECTICUT • 06441  
Tel. 905.474.3314. Fax. 905.474.3325. Visit. [www.rapidotrains.com](http://www.rapidotrains.com)

**RAPIDO**

DEALER NAME:

**HO  
SCALE**

# CANADIAN PIGGYBACK FLAT CARS



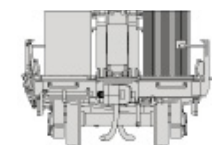
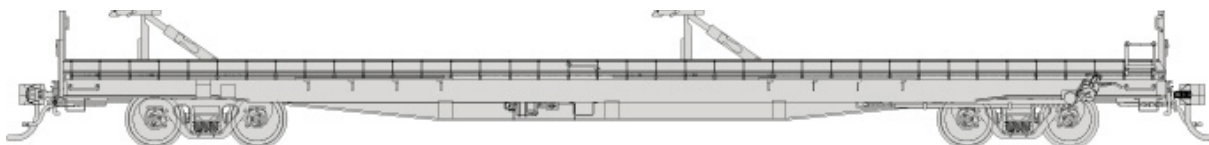
## Canadian National (Vancouver Iron and Engineering / 1966 - 1976 era)

Item # 6-Pack #1 151001	Road # 688000, 688025, 688029, 688031, 688034, 688067	Item # Single Car 151001A	Road # Road Number Randomly Selected	Item # 6-Pack #2 151002	Road # 688102, 688105, 688109, 688123, 688127, 688163	Item # Single Car 151002A	Road # Road Number Randomly Selected
-------------------------------	--	---------------------------------	--	-------------------------------	--	---------------------------------	--



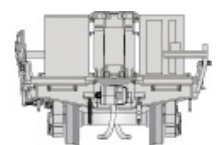
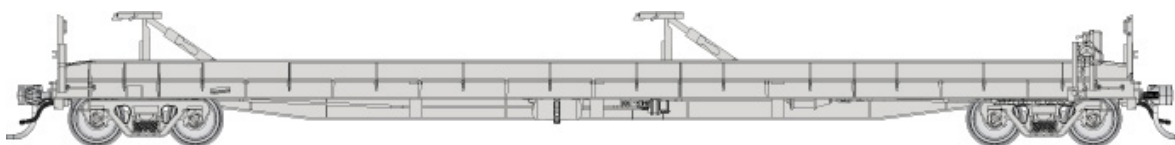
## Canadian Pacific (Marine Industries / 1973 - Late 1980s era)

Item # 6-Pack #1 151003	Road # 505625, 50629, 505631, 505643, 505649, 505652	Item # Single Car 151003A	Road # Road Number Randomly Selected	Item # 6-Pack #2 151004	Road # 505659, 505663, 505668, 505704, 505732, 505785	Item # Single Car 151004A	Road # Road Number Randomly Selected
-------------------------------	---	---------------------------------	--	-------------------------------	--	---------------------------------	--



## Undecorated-Assembled (CP Version / As-built)

Item #  
Single Car  
151098



## Undecorated-Assembled (CN Version / As-built)

Item #  
Single Car  
151099

<b>MSRP</b>	Single	\$54.95	US
	6-Pack	\$329.70	US
	Single	\$64.95	CAD
	6-Pack	\$389.70	CAD



CANADA: 500 ALDEN ROAD • UNIT 21 • MARKHAM • ONTARIO • L3R 5H5  
 USA: PO BOX 796 • HIGGANUM • CONNECTICUT • 06441  
 Tel. 905.474.3314. Fax. 905.474.3325. Visit. [www.rapidotrains.com](http://www.rapidotrains.com)

**RAPIDO**

DEALER NAME: